

# Converting Colors

Hex(D0A595)

Have a look what the booklet for  
Hex(D0A595) contains.

<b>Hex(D0A595)</b> .....	3
<i><b>Conversions</b></i> .....	4
<i><b>Details</b></i> .....	6
<i><b>Harmonies</b></i> .....	11
<i><b>Previews</b></i> .....	23
<i><b>Color Blindness Simulation</b></i> .....	26
<i><b>CSS Examples</b></i> .....	29

**Color**

**Hex(D0A595)**

# Conversions

## Conversions Part 1

Format	Color
Hex	D0A595
RGB	208, 165, 149
RGB Percent	82%, 65%, 58%
CMY	0.1843, 0.3529, 0.4157
CMYK	0.00, 0.21, 0.28, 0.18
HSL	16°, 39%, 70%
HSV	16°, 28%, 82%
XYZ	44.8924, 42.4901, 34.2691
YIQ	176.0330, 30.7640, 4.1400

# Conversions

## Conversions Part 2

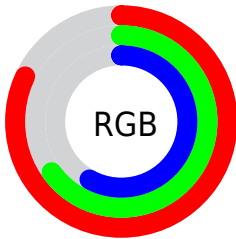
Format	Color
R <sub>Y</sub> B	208, 171, 149
Decimal	13673877
CIE Lab	71.21, 13.49, 14.31
CIE LCh	71, 19.671, 46.693
Yxy	42.4901, 0.3690, 0.3493
Android (android.graphics.Color)	4291863957 (0xFFD0A595)
YUV	176.0330, -13.3273, 28.0351
Hunter-Lab	65.1844, 8.8598, 14.4588

# Details

The Hex color **D0A595** is a light color, and the websafe version is hex **CC9999**. A complement of this color would be **95C0D0**, and the grayscale version is **B0B0B0**.

A 20% lighter version of the original color is **FFDCCB**, and **997162** is the 20% darker color. If you saturate the color by 10%, you get **D09680**, and if you desaturate by 10%, it is **D0B4AA**.

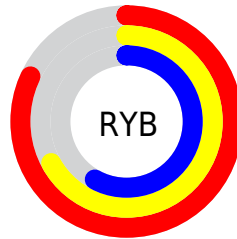
# Distribution



Red (82%)

Green (65%)

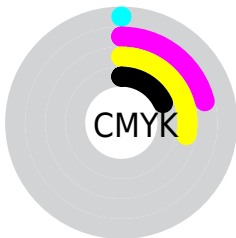
Blue (58%)



Red (82%)

Yellow (67%)

Blue (58%)

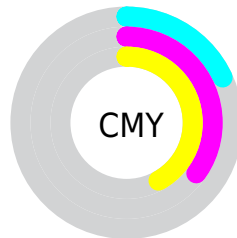


Cyan (0%)

Magenta (21%)

Yellow (28%)

Black (18%)



Cyan (18%)

Magenta (35%)

Yellow (42%)

# Brightness & Saturation Gradients

These gradients show how the Hex color D0A595 changes by changing the brightness by 10 percent. The first figure shows a shift by +10% for each color and the second figure -10%.

Similar to the brightness gradients but the following saturation gradients show a change of the Hex color D0A595 by changing the saturation by 10% instead.



 D0A595

 D0A595

FFFFFF

 B48B7B

 FFDCCB

 997162

 FFF9E7

 7E594A

 644134

 4B2B1E

 331607

 1E0000

 000000

 D0A595

 D0A595

 D09680

 D0B4AA

 D0876B

 D0C3BF

 D07857

 D0D2D3

 D06842

 D0E2E8

 D0592D

 D0F1FD

 D04A18

 D0FFFF

 D03B03

 D03800

# Harmonies

## Analogous

The Analogous color harmony consists of three colors that are next to each other on the color wheel.



D4A2A5



D0A595



C4AA8C

# Triad

The Triadic color harmony groups three colors that are evenly spaced from another and form a triangle on the color wheel.



D0A595



8AB8A5



A7ACD0

# Complementary

The Complementary color scheme is a pair of colors which are on the opposite of each other on the color wheel.



D0A595



95C0D0

# Split Complementary

Split-complementary colors differ from the complementary color scheme. The scheme consists of three colors, the original color and two neighbors of the complement color.



90B2D1



D0A595



7FB9B8

# Square

The Square scheme is like the rectangle color scheme, but the four colors are evenly spaced on the color wheel.



D0A595



9DB595



80B7C8



BEA7C7

# Rectangle

The Rectangle color scheme consists of four colors that form a rectangle on the color wheel.



D0A595



B8AE8B



80B7C8



9FAFD2



# Sweetspot

The Sweet Spot groups the original color and five complimentary colors.



D0A595



FFEEE8



D095C0



807571



000000



808080



# Same Dimension

The Same Dimension uses a secret algorithm to generate beautiful new colors.



D0A595



FFC0A8



D0C295



69615E



A82E00



290B00

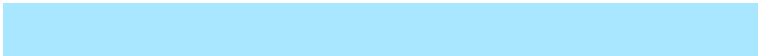


# Inverse Universe

The Inverse Universe completely reimagines the original color for something new.



95C0D0



A8E7FF



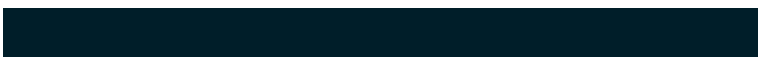
95A3D0



5E6669



007BA8

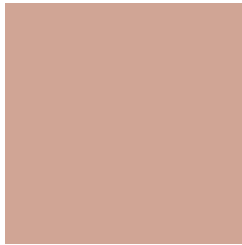


001E29



# Previews

## White Background



This preview shows how the Hex color D0A595 looks on a white background.

## Color Contrast Check

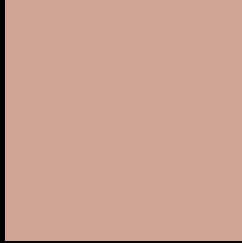
Large Text (above 18pt) WCAG AA × Fail

Any Text WCAG AA × Fail

Large Text (above 18pt) WCAG AAA × Fail

Any Text WCAG AAA × Fail

# Black Background



This preview shows how the Hex color D0A595 looks on a black background.

## Color Contrast Check

Large Text (above 18pt) WCAG AA ✓ Pass

Any Text WCAG AA ✓ Pass

Large Text (above 18pt) WCAG AAA ✓ Pass

Any Text WCAG AAA ✓ Pass

If you want to check with other color combinations, try the [Color Contrast Checker](#).



## Hex D0A595 Background



This preview shows how black text looks on a background with the Hex color D0A595.

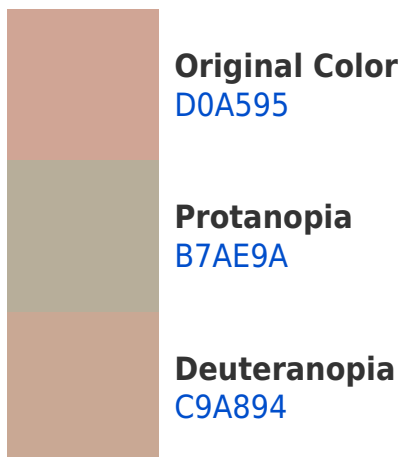


This preview shows how white text looks on a background with the Hex color D0A595.

# Color Blindness Simulation

Color vision deficiency is a very complex topic, and I could not describe the different causes any better than Wikipedia does, so if you want to learn more, you should check out their [article about color blindness](#).

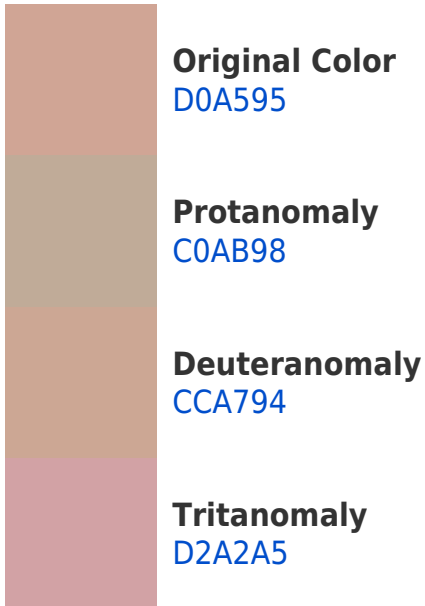
## Dichromacy



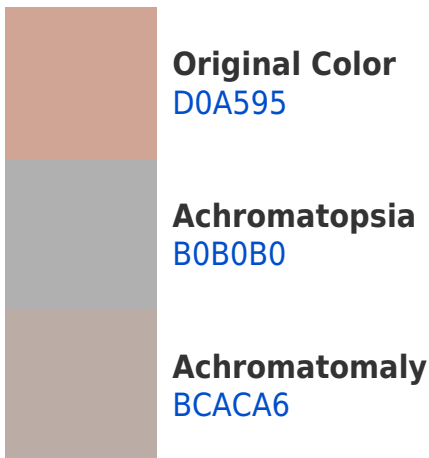


**Tritanopia**  
D3A1AE

# Trichromacy



# Monochromacy



# CSS Examples

## Text

The CSS property to change the color of the text to Hex D0A595 is called "color". The color property can be set on classes, ids or directly on the HTML element.

This example shows how text in the color #D0A595 looks like.

```
.text, #text, p{  
    color:#D0A595  
}
```

If you want to add a text shadow in that color use the text-shadow property, you can generate a text shadow directly with our [CSS Text Shadow Generator](#).

Here you see how black text with a 4 pixel #D0A595 colored shadow looks like.

```
.shadow{ text-shadow: 4px 4px 2px #D0A595  
}
```

## Border

The CSS property to change the border of an element to Hex D0A595 is called "border". The border property can be set on classes, ids or directly on the HTML element.

This example shows the color as border, it can be applied via the CSS property "border" or "border-color".

```
.border, #border, table{ border:4px solid  
#D0A595 }
```

If only the border color should be changed use the property `border-color`.

```
.border{ border-color:#D0A595 }
```

If you want to add a box shadow in that color use:

Here you see how a box with a 4 pixel #D0A595 colored shadow looks like.

```
.boxshadow{ -moz-box-shadow:4px 4px 4px  
4px #D0A595; -webkit-box-shadow:4px 4px  
4px 4px #D0A595; box-shadow:4px 4px 4px  
4px #D0A595 }
```

# Background

The CSS property to change the background color of an element to Hex D0A595 is called "background". The background property can be set on classes, ids or directly on the HTML element.

```
.background, #background, body{  
background:#D0A595 }
```

If only the background color should be changed can be used:

```
.background{ background-color:#D0A595 }
```

This example shows the color as background, it is applied via the CSS property "background".

To optimize and compress your CSS code, you can use our [online CSS compressor and optimizer](#) based on csstidy. If you want to create a linear or radial gradient as background or border, check our [CSS Gradient Generator](#).



Hey! You found this booklet interesting? Support Converting Colors with the new Membership Option!

The pro membership hides all ads, plus gives you double the colors in the color bucket, and more awesome pro features!

**[Learn more, Memberships starting at \\$2.50/m!](#)**

**Follow me  
on Twitter!**

@ConvertingColor