

# Converting Colors

Hex(D0A8A8)

Have a look what the booklet for  
Hex(D0A8A8) contains.

<b>Hex(D0A8A8)</b> .....	3
<i><b>Conversions</b></i> .....	4
<i><b>Details</b></i> .....	6
<i><b>Harmonies</b></i> .....	11
<i><b>Previews</b></i> .....	23
<i><b>Color Blindness Simulation</b></i> .....	26
<i><b>CSS Examples</b></i> .....	29

# **Color**

**Hex(D0A8A8)**

# Conversions

## Conversions Part 1

Format	Color
Hex	D0A8A8
RGB	208, 168, 168
RGB Percent	82%, 66%, 66%
CMY	0.1843, 0.3412, 0.3412
CMYK	0.00, 0.19, 0.19, 0.18
HSL	0°, 30%, 74%
HSV	0°, 19%, 82%
XYZ	47.0829, 44.2423, 43.1039
YIQ	179.9600, 23.8400, 8.4800

# Conversions

## Conversions Part 2

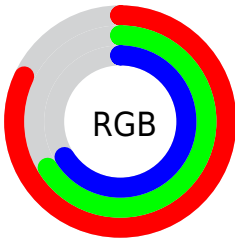
Format	Color
R <sub>Y</sub> B	208, 168, 168
Decimal	13674664
CIE Lab	72.39, 14.63, 5.54
CIE LCh	72, 15.643, 20.757
Yxy	44.2423, 0.3502, 0.3291
Android (android.graphics.Color)	4291864744 (0xFFD0A8A8)
YUV	179.9600, -5.8963, 24.5911
Hunter-Lab	66.5149, 9.9512, 8.1385

# Details

The Hex color **D0A8A8** is a light color, and the websafe version is hex **CC9999**. A complement of this color would be **A8D0D0**, and the grayscale version is **B4B4B4**.

A 20% lighter version of the original color is **FFDFDF**, and **997474** is the 20% darker color. If you saturate the color by 10%, you get **D09393**, and if you desaturate by 10%, it is **D0BDBD**.

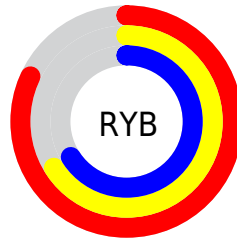
# Distribution



Red (82%)

Green (66%)

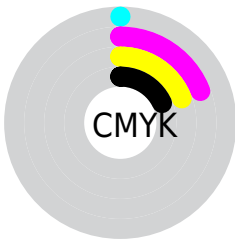
Blue (66%)



Red (82%)

Yellow (66%)

Blue (66%)

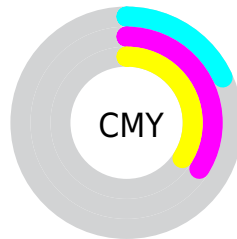


Cyan (0%)

Magenta (19%)

Yellow (19%)

Black (18%)



Cyan (18%)

Magenta (34%)

Yellow (34%)

# Brightness & Saturation Gradients

These gradients show how the Hex color D0A8A8 changes by changing the brightness by 10 percent. The first figure shows a shift by +10% for each color and the second figure -10%.

Similar to the brightness gradients but the following saturation gradients show a change of the Hex color D0A8A8 by changing the saturation by 10% instead.



 D0A8A8

 D0A8A8

FFFFFF

 B48E8E

 FFDFDF

 997474

 FFFCFC

 7F5B5C

 654344

 4C2D2E

 351819

 220000

 000000

 D0A8A8

 D0A8A8

 D09393

 D0BDBD

 D07E7E

 D0D2D2

 D06A6A

 D0E6E6

 D05555

 D0FBFB

 D04040

 D0FFFF

 D02B2B

 D01616

 D00202

 D00000

# Harmonies

## Analogous

The Analogous color harmony consists of three colors that are next to each other on the color wheel.



CCA8B7



D0A8A8



CCAB9C

# Triad

The Triadic color harmony groups three colors that are evenly spaced from another and form a triangle on the color wheel.



D0A8A8



A2B89F



9DB4CD

# Complementary

The Complementary color scheme is a pair of colors which are on the opposite of each other on the color wheel.



D0A8A8



A8D0D0

# Split Complementary

Split-complementary colors differ from the complementary color scheme. The scheme consists of three colors, the original color and two neighbors of the complement color.



90B8C7



D0A8A8



94BAAC

# Square

The Square scheme is like the rectangle color scheme, but the four colors are evenly spaced on the color wheel.



D0A8A8



B2B497



8CBABB



AFAFCC

# Rectangle

The Rectangle color scheme consists of four colors that form a rectangle on the color wheel.



D0A8A8



C6AD97



8CBABB



97B6CC



# Sweetspot

The Sweet Spot groups the original color and five complimentary colors.



D0A8A8



FFF0F0



D0A8D0



807777



000000



808080



# Same Dimension

The Same Dimension uses a secret algorithm to generate beautiful new colors.



D0A8A8



FFC4C4



D0BCA8



695E5E



A80000



290000

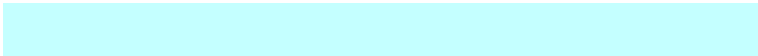


# Inverse Universe

The Inverse Universe completely reimagines the original color for something new.



A8D0D0



C4FFFF



A8BCD0



5E6969



00A8A8

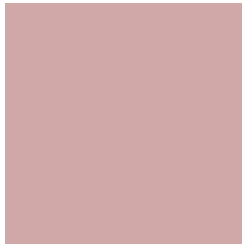


002929



# Previews

## White Background



This preview shows how the Hex color D0A8A8 looks on a white background.

## Color Contrast Check

Large Text (above 18pt) WCAG AA × Fail

Any Text WCAG AA × Fail

Large Text (above 18pt) WCAG AAA × Fail

Any Text WCAG AAA × Fail

# Black Background



This preview shows how the Hex color D0A8A8 looks on a black background.

## Color Contrast Check

Large Text (above 18pt) WCAG AA ✓ Pass

Any Text WCAG AA ✓ Pass

Large Text (above 18pt) WCAG AAA ✓ Pass

Any Text WCAG AAA ✓ Pass

If you want to check with other color combinations, try the [Color Contrast Checker](#).



## Hex D0A8A8 Background



This preview shows how black text looks on a background with the Hex color D0A8A8.

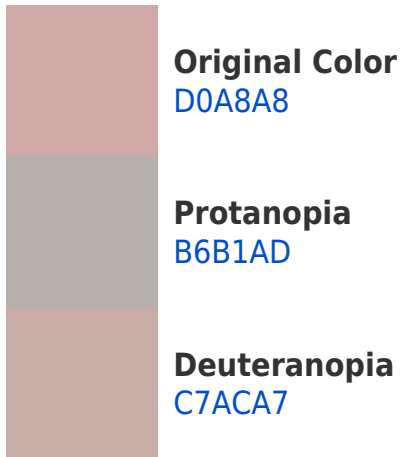


This preview shows how white text looks on a background with the Hex color D0A8A8.

# Color Blindness Simulation

Color vision deficiency is a very complex topic, and I could not describe the different causes any better than Wikipedia does, so if you want to learn more, you should check out their [article about color blindness](#).

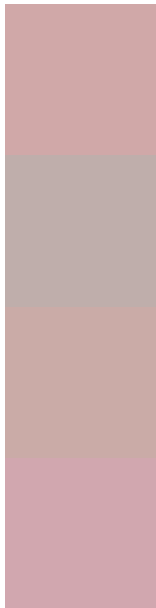
## Dichromacy





**Tritanopia**  
D1A6B3

# Trichromacy



**Original Color**  
D0A8A8

**Protanomaly**  
BFAEAB

**Deuteranomaly**  
CAABA7

**Tritanomaly**  
D1A7AF

# Monochromacy



**Original Color**  
D0A8A8

**Achromatopsia**  
B4B4B4

**Achromatomaly**  
BEB0B0

# CSS Examples

## Text

The CSS property to change the color of the text to Hex D0A8A8 is called "color". The color property can be set on classes, ids or directly on the HTML element.

This example shows how text in the color #D0A8A8 looks like.

```
.text, #text, p{  
    color:#D0A8A8  
}
```

If you want to add a text shadow in that color use the text-shadow property, you can generate a text shadow directly with our [CSS Text Shadow Generator](#).

Here you see how black text with a 4 pixel #D0A8A8 colored shadow looks like.

```
.shadow{ text-shadow: 4px 4px 2px #D0A8A8  
}
```

## Border

The CSS property to change the border of an element to Hex D0A8A8 is called "border". The border property can be set on classes, ids or directly on the HTML element.

This example shows the color as border, it can be applied via the CSS property "border" or "border-color".

```
.border, #border, table{ border:4px solid  
#D0A8A8 }
```

If only the border color should be changed use the property `border-color`.

```
.border{ border-color:#D0A8A8 }
```

If you want to add a box shadow in that color use:

Here you see how a box with a 4 pixel #D0A8A8 colored shadow looks like.

```
.boxshadow{ -moz-box-shadow:4px 4px 4px  
4px #D0A8A8; -webkit-box-shadow:4px 4px  
4px 4px #D0A8A8; box-shadow:4px 4px 4px  
4px #D0A8A8 }
```

# Background

The CSS property to change the background color of an element to Hex D0A8A8 is called "background". The background property can be set on classes, ids or directly on the HTML element.

```
.background, #background, body{  
background:#D0A8A8 }
```

If only the background color should be changed can be used:

```
.background{ background-color:#D0A8A8 }
```

This example shows the color as background, it is applied via the CSS property "background".

To optimize and compress your CSS code, you can use our [online CSS compressor and optimizer](#) based on csstidy. If you want to create a linear or radial gradient as background or border, check our [CSS Gradient Generator](#).



Hey! You found this booklet interesting? Support Converting Colors with the new Membership Option!

The pro membership hides all ads, plus gives you double the colors in the color bucket, and more awesome pro features!

**[Learn more, Memberships starting at \\$2.50/m!](#)**

**Follow me  
on Twitter!**

@ConvertingColor