

# Converting Colors

Hex(D0AAA9)

Have a look what the booklet for  
Hex(D0AAA9) contains.

<b>Hex(D0AAA9)</b> .....	3
<b><i>Conversions</i></b> .....	4
<b><i>Details</i></b> .....	6
<b><i>Harmonies</i></b> .....	11
<b><i>Previews</i></b> .....	23
<b><i>Color Blindness Simulation</i></b> .....	26
<b><i>CSS Examples</i></b> .....	29

# **Color**

**Hex(D0AAA9)**

# Conversions

## Conversions Part 1

Format	Color
Hex	D0AAA9
RGB	208, 170, 169
RGB Percent	82%, 67%, 66%
CMY	0.1843, 0.3333, 0.3373
CMYK	0.00, 0.18, 0.19, 0.18
HSL	2°, 29%, 74%
HSV	2°, 19%, 82%
XYZ	47.5486, 45.0239, 43.7205
YIQ	181.2480, 22.9690, 7.7450

# Conversions

## Conversions Part 2

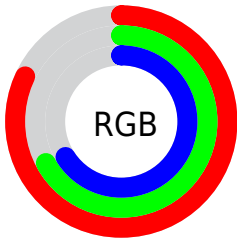
<b>Format</b>	<b>Color</b>
<b>R<sub>YB</sub></b>	208, 170, 169
Decimal	13675177
CIE <sub>Lab</sub>	72.91, 13.70, 5.74
CIE <sub>LCh</sub>	73, 14.851, 22.734
Yxy	45.0239, 0.3489, 0.3303
Android (android.graphics.Color)	4291865257 (0xFFD0AAA9)
YUV	181.2480, -6.0383, 23.4615
Hunter-Lab	67.0999, 9.0646, 8.3381

# Details

The Hex color **D0AAA9** is a light color, and the websafe version is hex **CC9999**. A complement of this color would be **A9CFD0**, and the grayscale version is **B5B5B5**.

A 20% lighter version of the original color is **FFE1E0**, and **997675** is the 20% darker color. If you saturate the color by 10%, you get **D09694**, and if you desaturate by 10%, it is **D0BEBE**.

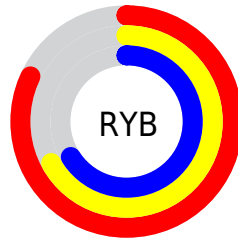
# Distribution



Red (82%)

Green (67%)

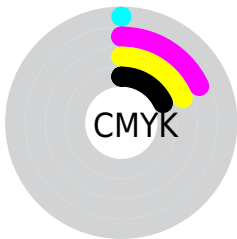
Blue (66%)



Red (82%)

Yellow (67%)

Blue (66%)

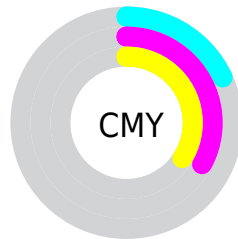


Cyan (0%)

Magenta (18%)

Yellow (19%)

Black (18%)



Cyan (18%)

Magenta (33%)

Yellow (34%)

# Brightness & Saturation Gradients

These gradients show how the Hex color D0AAA9 changes by changing the brightness by 10 percent. The first figure shows a shift by +10% for each color and the second figure -10%.

Similar to the brightness gradients but the following saturation gradients show a change of the Hex color D0AAA9 by changing the saturation by 10% instead.



 D0AAA9

 D0AAA9

FFFFFF

 B48F8F

 FFE1E0

 997675

 FFFEFD

 7F5D5C

 654545

 4D2F2F

 351A1A

 220000

 000000

 D0AAA9

 D0AAA9

 D09694

 D0BEBE

 D0817F

 D0D3D3

 D06D6B

 D0E7E7

 D05956

 D0FBFC

 D04541

 D0FFFF

 D0302C

 D01C17

 D00803

 D00500

# Harmonies

## Analogous

The Analogous color harmony consists of three colors that are next to each other on the color wheel.



CDAAB7



D0AAA9



CCAD9E

# Triad

The Triadic color harmony groups three colors that are evenly spaced from another and form a triangle on the color wheel.



D0AAA9



A3B9A2



A0B5CE

# Complementary

The Complementary color scheme is a pair of colors which are on the opposite of each other on the color wheel.



D0AAA9



A9CFD0

# Split Complementary

Split-complementary colors differ from the complementary color scheme. The scheme consists of three colors, the original color and two neighbors of the complement color.



93B9C8



D0AAA9



96BBAF

# Square

The Square scheme is like the rectangle color scheme, but the four colors are evenly spaced on the color wheel.



D0AAA9



B3B59A



90BBBD



B1B1CC

# Rectangle

The Rectangle color scheme consists of four colors that form a rectangle on the color wheel.



D0AAA9



C5AF99



90BBBD



9BB6CC



# Sweetspot

The Sweet Spot groups the original color and five complimentary colors.



D0AAA9



FFF0F0



D0A9CF



807777



000000



808080



# Same Dimension

The Same Dimension uses a secret algorithm to generate beautiful new colors.



D0AAA9



FFC6C4



D0BDA9



695E5E



A80400



290100



# Inverse Universe

The Inverse Universe completely reimagines the original color for something new.



A9CFD0



C4FDFE



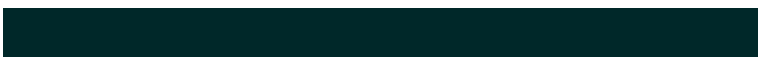
A9BCD0



5E6869



00A4A8

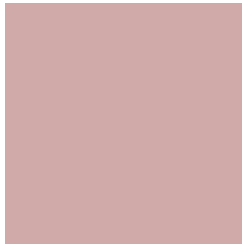


002829



# Previews

## White Background



This preview shows how the Hex color D0AAA9 looks on a white background.

## Color Contrast Check

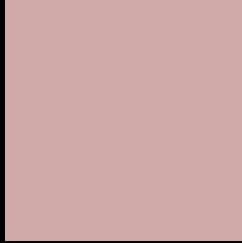
Large Text (above 18pt) WCAG AA × Fail

Any Text WCAG AA × Fail

Large Text (above 18pt) WCAG AAA × Fail

Any Text WCAG AAA × Fail

# Black Background



This preview shows how the Hex color D0AAA9 looks on a black background.

## Color Contrast Check

Large Text (above 18pt) WCAG AA ✓ Pass

Any Text WCAG AA ✓ Pass

Large Text (above 18pt) WCAG AAA ✓ Pass

Any Text WCAG AAA ✓ Pass

If you want to check with other color combinations, try the [Color Contrast Checker](#).



## Hex D0AAA9 Background



This preview shows how black text looks on a background with the Hex color D0AAA9.

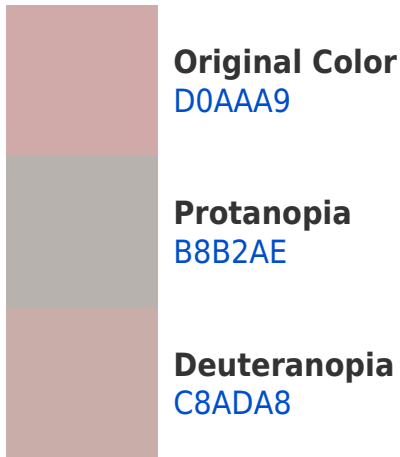


This preview shows how white text looks on a background with the Hex color D0AAA9.

# Color Blindness Simulation

Color vision deficiency is a very complex topic, and I could not describe the different causes any better than Wikipedia does, so if you want to learn more, you should check out their [article about color blindness](#).

## Dichromacy





**Tritanopia**  
D1A8B5

# Trichromacy



**Original Color**

D0AAA9

**Protanomaly**

C1AFAC

**Deuteranomaly**

CBACA8

**Tritanomaly**

D1A9B1

# Monochromacy



**Original Color**

D0AAA9

**Achromatopsia**

B5B5B5

**Achromatomaly**

BFB1B1

# CSS Examples

## Text

The CSS property to change the color of the text to Hex D0AAA9 is called "color". The color property can be set on classes, ids or directly on the HTML element.

This example shows how text in the color #D0AAA9 looks like.

```
.text, #text, p{  
    color:#D0AAA9  
}
```

If you want to add a text shadow in that color use the text-shadow property, you can generate a text shadow directly with our [CSS Text Shadow Generator](#).

Here you see how black text with a 4 pixel #D0AAA9 colored shadow looks like.

```
.shadow{ text-shadow: 4px 4px 2px #D0AAA9
}
```

## Border

The CSS property to change the border of an element to Hex D0AAA9 is called "border". The border property can be set on classes, ids or directly on the HTML element.

This example shows the color as border, it can be applied via the CSS property "border" or "border-color".

```
.border, #border, table{ border:4px solid
#D0AAA9 }
```

If only the border color should be changed use the property `border-color`.

```
.border{ border-color:#D0AAA9 }
```

If you want to add a box shadow in that color use:

Here you see how a box with a 4 pixel #D0AAA9 colored shadow looks like.

```
.boxshadow{ -moz-box-shadow:4px 4px 4px  
4px #D0AAA9; -webkit-box-shadow:4px 4px  
4px 4px #D0AAA9; box-shadow:4px 4px 4px  
4px #D0AAA9 }
```

# Background

The CSS property to change the background color of an element to Hex D0AAA9 is called "background". The background property can be set on classes, ids or directly on the HTML element.

```
.background, #background, body{  
background:#D0AAA9 }
```

If only the background color should be changed can be used:

```
.background{ background-color:#D0AAA9 }
```

This example shows the color as background, it is applied via the CSS property "background".

To optimize and compress your CSS code, you can use our [online CSS compressor and optimizer](#) based on csstidy. If you want to create a linear or radial gradient as background or border, check our [CSS Gradient Generator](#).



Hey! You found this booklet interesting? Support Converting Colors with the new Membership Option!

The pro membership hides all ads, plus gives you double the colors in the color bucket, and more awesome pro features!

**[Learn more, Memberships starting at \\$2.50/m!](#)**

**Follow me  
on Twitter!**

@ConvertingColor