

# Converting Colors

Hex(D0ADB6)

Have a look what the booklet for  
Hex(D0ADB6) contains.

<b>Hex(D0ADB6)</b> .....	3
<i><b>Conversions</b></i> .....	4
<i><b>Details</b></i> .....	6
<i><b>Harmonies</b></i> .....	11
<i><b>Previews</b></i> .....	23
<i><b>Color Blindness Simulation</b></i> .....	26
<i><b>CSS Examples</b></i> .....	29

# **Color**

**Hex(D0ADB6)**

# Conversions

## Conversions Part 1

Format	Color
Hex	D0ADB6
RGB	208, 173, 182
RGB Percent	82%, 68%, 71%
CMY	0.1843, 0.3216, 0.2863
CMYK	0.00, 0.17, 0.12, 0.18
HSL	345°, 27%, 75%
HSV	345°, 17%, 82%
XYZ	49.3995, 46.6744, 50.6614
YIQ	184.4910, 17.9710, 10.2190

# Conversions

## Conversions Part 2

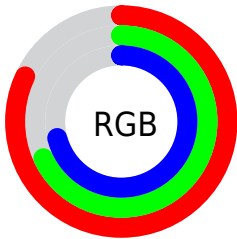
Format	Color
R <sub>Y</sub> B	208, 173, 182
Decimal	13675958
CIE Lab	73.98, 14.16, 0.16
CIE LCh	74, 14.157, 0.656
Yxy	46.6744, 0.3367, 0.3181
Android (android.graphics.Color)	4291866038 (0xFFD0ADB6)
YUV	184.4910, -1.2281, 20.6174
Hunter-Lab	68.3187, 9.5111, 3.8569

# Details

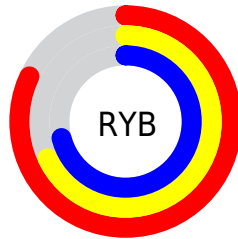
The Hex color **D0ADB6** is a light color, and the websafe version is hex **CC9999**. A complement of this color would be **ADD0C7**, and the grayscale version is **B8B8B8**.

A 20% lighter version of the original color is **FFE5EE**, and **997981** is the 20% darker color. If you saturate the color by 10%, you get **D098A7**, and if you desaturate by 10%, it is **D0C2C5**.

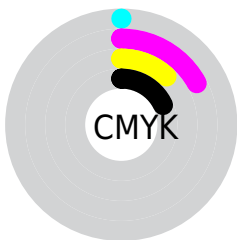
# Distribution



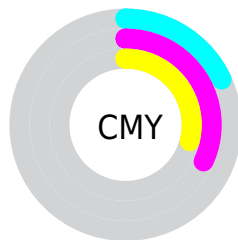
- Red (82%)
- Green (68%)
- Blue (71%)



- Red (82%)
- Yellow (68%)
- Blue (71%)



- Cyan (0%)
- Magenta (17%)
- Yellow (12%)
- Black (18%)



- Cyan (18%)
- Magenta (32%)
- Yellow (29%)

# Brightness & Saturation Gradients

These gradients show how the Hex color D0ADB6 changes by changing the brightness by 10 percent. The first figure shows a shift by +10% for each color and the second figure -10%.

Similar to the brightness gradients but the following saturation gradients show a change of the Hex color D0ADB6 by changing the saturation by 10% instead.



 D0ADB6

FFFFFF

 FFE5EE

 D0ADB6

 B4929B

 997981

 7F6068

 664850

 4D3139

 361C24

 22030E

 000000

 D0ADB6

 D0ADB6

 D098A7

 D0C2C5

 D08397

 D0D7D5

 D06F88

 D0EBE4

 D05A78

 D0FFF4

 D04569

 D0FFFF

 D03059

 D01B4A

 D0073A

 D00035

# Harmonies

## Analogous

The Analogous color harmony consists of three colors that are next to each other on the color wheel.



C7AFC3



D0ADB6



D1AEA9

# Triad

The Triadic color harmony groups three colors that are evenly spaced from another and form a triangle on the color wheel.



D0ADB6



B2B99F



9BBBCC

# Complementary

The Complementary color scheme is a pair of colors which are on the opposite of each other on the color wheel.



D0ADB6



ADD0C7

# Split Complementary

Split-complementary colors differ from the complementary color scheme. The scheme consists of three colors, the original color and two neighbors of the complement color.



95BDC3



D0ADB6



A3BCA9

# Square

The Square scheme is like the rectangle color scheme, but the four colors are evenly spaced on the color wheel.



D0ADB6



C0B59C



98BEB6



A8B7D0

# Rectangle

The Rectangle color scheme consists of four colors that form a rectangle on the color wheel.



D0ADB6



CEB0A2



98BEB6



97BCC9

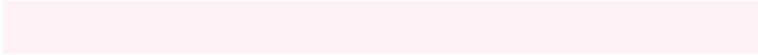


# Sweetspot

The Sweet Spot groups the original color and five complimentary colors.



D0ADB6



FFF2F6



C7ADD0



80787A



000000



808080



# Same Dimension

The Same Dimension uses a secret algorithm to generate beautiful new colors.



D0ADB6



FFCCD9



D0B5AD



695E61



A8002B



29000A



# Inverse Universe

The Inverse Universe completely reimagines the original color for something new.



D0ADB6



FFCCD9



ADC8D0



695E61



A8002B

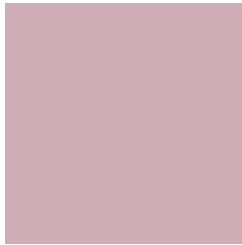


29000A



# Previews

## White Background



This preview shows how the Hex color D0ADB6 looks on a white background.

## Color Contrast Check

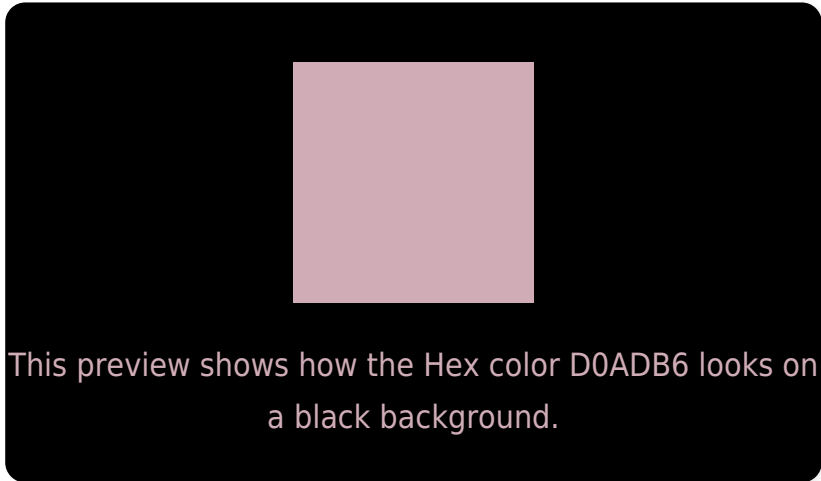
Large Text (above 18pt) WCAG AA × Fail

Any Text WCAG AA × Fail

Large Text (above 18pt) WCAG AAA × Fail

Any Text WCAG AAA × Fail

# Black Background



## Color Contrast Check

Large Text (above 18pt) WCAG AA ✓ Pass

Any Text WCAG AA ✓ Pass

Large Text (above 18pt) WCAG AAA ✓ Pass

Any Text WCAG AAA ✓ Pass

If you want to check with other color combinations, try the [Color Contrast Checker](#).



## Hex D0ADB6 Background



This preview shows how black text looks on a background with the Hex color D0ADB6.



This preview shows how white text looks on a background with the Hex color D0ADB6.

# Color Blindness Simulation

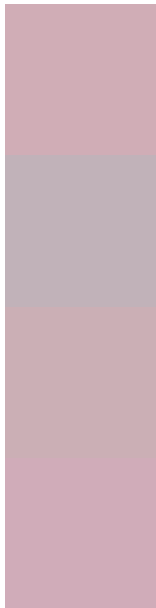
Color vision deficiency is a very complex topic, and I could not describe the different causes any better than Wikipedia does, so if you want to learn more, you should check out their [article about color blindness](#).

## Dichromacy





# Trichromacy



**Original Color**

D0ADB6

**Protanomaly**

C1B2B9

**Deuteranomaly**

CBAFB5

**Tritanomaly**

D0ACB9

# Monochromacy



**Original Color**

D0ADB6

**Achromatopsia**

B8B8B8

**Achromatomaly**

C1B4B7

# CSS Examples

## Text

The CSS property to change the color of the text to Hex D0ADB6 is called "color". The color property can be set on classes, ids or directly on the HTML element.

This example shows how text in the color #D0ADB6 looks like.

```
.text, #text, p{  
    color:#D0ADB6  
}
```

If you want to add a text shadow in that color use the text-shadow property, you can generate a text shadow directly with our [CSS Text Shadow Generator](#).

Here you see how black text with a 4 pixel #D0ADB6 colored shadow looks like.

```
.shadow{ text-shadow: 4px 4px 2px #D0ADB6  
}
```

## Border

The CSS property to change the border of an element to Hex D0ADB6 is called "border". The border property can be set on classes, ids or directly on the HTML element.

This example shows the color as border, it can be applied via the CSS property "border" or "border-color".

```
.border, #border, table{ border:4px solid  
#D0ADB6 }
```

If only the border color should be changed use the property `border-color`.

```
.border{ border-color:#D0ADB6 }
```

If you want to add a box shadow in that color use:

Here you see how a box with a 4 pixel #D0ADB6 colored shadow looks like.

```
.boxshadow{ -moz-box-shadow:4px 4px 4px  
4px #D0ADB6; -webkit-box-shadow:4px 4px  
4px 4px #D0ADB6; box-shadow:4px 4px 4px  
4px #D0ADB6 }
```

# Background

The CSS property to change the background color of an element to Hex D0ADB6 is called "background". The background property can be set on classes, ids or directly on the HTML element.

```
.background, #background, body{  
background:#D0ADB6 }
```

If only the background color should be changed can be used:

```
.background{ background-color:#D0ADB6 }
```

This example shows the color as background, it is applied via the CSS property "background".

To optimize and compress your CSS code, you can use our [online CSS compressor and optimizer](#) based on csstidy. If you want to create a linear or radial gradient as background or border, check our [CSS Gradient Generator](#).



Hey! You found this booklet interesting? Support Converting Colors with the new Membership Option!

The pro membership hides all ads, plus gives you double the colors in the color bucket, and more awesome pro features!

**[Learn more, Memberships starting at \\$2.50/m!](#)**

**Follow me  
on Twitter!**

@ConvertingColor