

# Converting Colors

Hex(D0B291)

Have a look what the booklet for  
Hex(D0B291) contains.

<b>Hex(D0B291)</b> .....	3
<i><b>Conversions</b></i> .....	4
<i><b>Details</b></i> .....	6
<i><b>Harmonies</b></i> .....	11
<i><b>Previews</b></i> .....	23
<i><b>Color Blindness Simulation</b></i> .....	26
<i><b>CSS Examples</b></i> .....	29

# **Color**

**Hex(D0B291)**

# Conversions

## Conversions Part 1

Format	Color
Hex	D0B291
RGB	208, 178, 145
RGB Percent	82%, 70%, 57%
CMY	0.1843, 0.3020, 0.4314
CMYK	0.00, 0.14, 0.30, 0.18
HSL	31°, 40%, 69%
HSV	31°, 30%, 82%
XYZ	47.0437, 47.2950, 33.4374
YIQ	183.2080, 28.4730, -3.9030

# Conversions

## Conversions Part 2

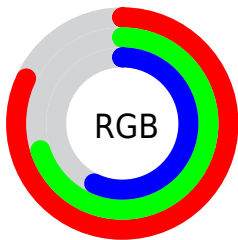
<b>Format</b>	<b>Color</b>
<a href="#">RYB</a>	<a href="#">202, 208, 145</a>
Decimal	<a href="#">13677201</a>
CIELab	<a href="#">74.38, 5.95, 20.89</a>
CIELCh	<a href="#">74, 21.721, 74.104</a>
Yxy	<a href="#">47.2950, 0.3682, 0.3701</a>
Android (android.graphics.Color)	<a href="#">4291867281 (0xFFD0B291)</a>
YUV	<a href="#">183.2080, -18.8365, 21.7426</a>
Hunter-Lab	<a href="#">68.7714, 1.7546, 19.3125</a>

# Details

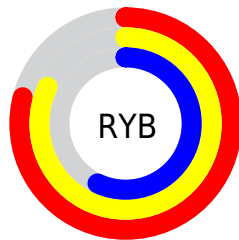
The Hex color **D0B291** is a light color, and the websafe version is hex **CCCC99**. A complement of this color would be **91AFD0**, and the grayscale version is **B7B7B7**.

A 20% lighter version of the original color is **FFEAC7**, and **997D5E** is the 20% darker color. If you saturate the color by 10%, you get **D0A87C**, and if you desaturate by 10%, it is **D0BCA6**.

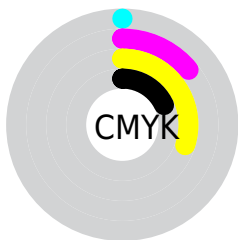
# Distribution



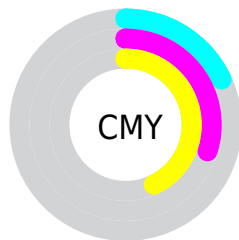
- Red (82%)
- Green (70%)
- Blue (57%)



- Red (79%)
- Yellow (82%)
- Blue (57%)



- Cyan (0%)
- Magenta (14%)
- Yellow (30%)
- Black (18%)



- Cyan (18%)
- Magenta (30%)
- Yellow (43%)

# Brightness & Saturation Gradients

These gradients show how the Hex color D0B291 changes by changing the brightness by 10 percent. The first figure shows a shift by +10% for each color and the second figure -10%.

Similar to the brightness gradients but the following saturation gradients show a change of the Hex color D0B291 by changing the saturation by 10% instead.



 D0B291

 D0B291

FFFFFF

 B49777

 FFEAC7

 997D5E

 FFFFE3

 7E6546

 644D30

 4B361A

 342101

 1D0B00

 000000

 D0B291

 D0B291

 D0A87C

 D0BCA6

 D09E67

 D0C6BB

 D09453

 D0D0CF

 D08A3E

 D0DAE4

 D08029

 D0E4F9

 D07714

 D0EDFF

 D06D00

 D0F7FF

 D0FFFF

# Harmonies

## Analogous

The Analogous color harmony consists of three colors that are next to each other on the color wheel.



DDAC9C



D0B291



BCB990

# Triad

The Triadic color harmony groups three colors that are evenly spaced from another and form a triangle on the color wheel.



D0B291



82C2C0



C6AFD4

# Complementary

The Complementary color scheme is a pair of colors which are on the opposite of each other on the color wheel.



D0B291



91AFD0

# Split Complementary

Split-complementary colors differ from the complementary color scheme. The scheme consists of three colors, the original color and two neighbors of the complement color.



ACB5DD



D0B291



82C0D2

# Square

The Square scheme is like the rectangle color scheme, but the four colors are evenly spaced on the color wheel.



D0B291



90C2AB



92BCDD



D8AAC2

# Rectangle

The Rectangle color scheme consists of four colors that form a rectangle on the color wheel.



D0B291



ADBD96



92BCDD



BEB1D8

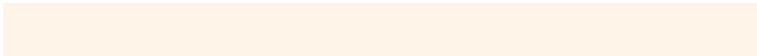


# Sweetspot

The Sweet Spot groups the original color and five complimentary colors.



D0B291



FFF4E8



D091AF



807971



000000



808080



# Same Dimension

The Same Dimension uses a secret algorithm to generate beautiful new colors.



D0B291



FFD3A3



CFD091



69645E



A85800



291500



# Inverse Universe

The Inverse Universe completely reimagines the original color for something new.



91AFD0



A3CFFF



9291D0



5E6369



0050A8

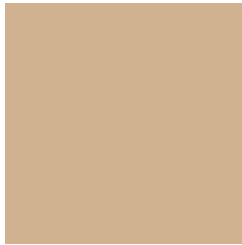


001329



# Previews

## White Background



This preview shows how the Hex color D0B291 looks on a white background.

## Color Contrast Check

Large Text (above 18pt) WCAG AA × Fail

Any Text WCAG AA × Fail

Large Text (above 18pt) WCAG AAA × Fail

Any Text WCAG AAA × Fail

# Black Background



This preview shows how the Hex color D0B291 looks on a black background.

## Color Contrast Check

Large Text (above 18pt) WCAG AA ✓ Pass

Any Text WCAG AA ✓ Pass

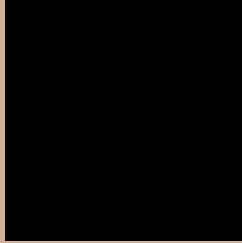
Large Text (above 18pt) WCAG AAA ✓ Pass

Any Text WCAG AAA ✓ Pass

If you want to check with other color combinations, try the [Color Contrast Checker](#).



## Hex D0B291 Background



This preview shows how black text looks on a background with the Hex color D0B291.



This preview shows how white text looks on a background with the Hex color D0B291.

# Color Blindness Simulation

Color vision deficiency is a very complex topic, and I could not describe the different causes any better than Wikipedia does, so if you want to learn more, you should check out their [article about color blindness](#).

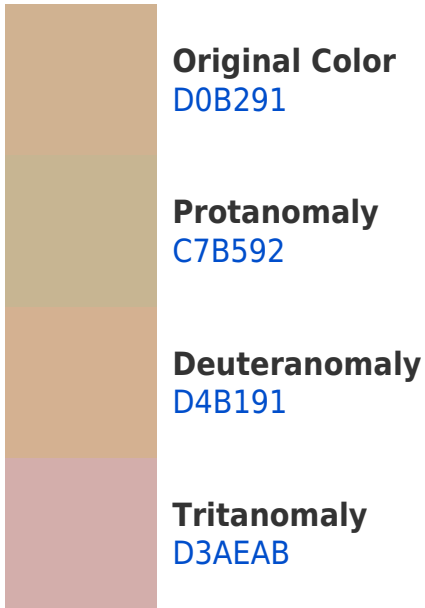
## Dichromacy



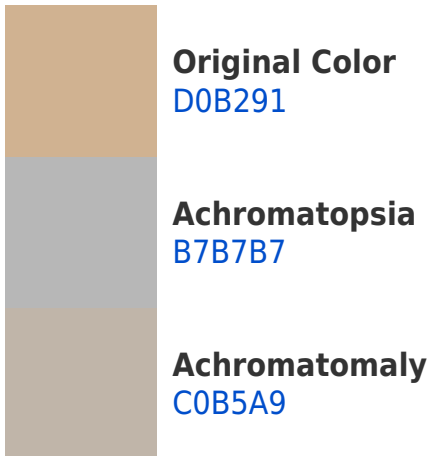


**Tritanopia**  
D5ACBA

# Trichromacy



# Monochromacy



# CSS Examples

## Text

The CSS property to change the color of the text to Hex D0B291 is called "color". The color property can be set on classes, ids or directly on the HTML element.

This example shows how text in the color #D0B291 looks like.

```
.text, #text, p{  
    color:#D0B291  
}
```

If you want to add a text shadow in that color use the text-shadow property, you can generate a text shadow directly with our [CSS Text Shadow Generator](#).

Here you see how black text with a 4 pixel #D0B291 colored shadow looks like.

```
.shadow{ text-shadow: 4px 4px 2px #D0B291
}
```

## Border

The CSS property to change the border of an element to Hex D0B291 is called "border". The border property can be set on classes, ids or directly on the HTML element.

This example shows the color as border, it can be applied via the CSS property "border" or "border-color".

```
.border, #border, table{ border:4px solid
#D0B291 }
```

If only the border color should be changed use the property `border-color`.

```
.border{ border-color:#D0B291 }
```

If you want to add a box shadow in that color use:

Here you see how a box with a 4 pixel #D0B291 colored shadow looks like.

```
.boxshadow{ -moz-box-shadow:4px 4px 4px  
4px #D0B291; -webkit-box-shadow:4px 4px  
4px 4px #D0B291; box-shadow:4px 4px 4px  
4px #D0B291 }
```

# Background

The CSS property to change the background color of an element to Hex D0B291 is called "background". The background property can be set on classes, ids or directly on the HTML element.

```
.background, #background, body{  
background:#D0B291 }
```

If only the background color should be changed can be used:

```
.background{ background-color:#D0B291 }
```

This example shows the color as background, it is applied via the CSS property "background".

To optimize and compress your CSS code, you can use our [online CSS compressor and optimizer](#) based on csstidy. If you want to create a linear or radial gradient as background or border, check our [CSS Gradient Generator](#).



Hey! You found this booklet interesting? Support Converting Colors with the new Membership Option!

The pro membership hides all ads, plus gives you double the colors in the color bucket, and more awesome pro features!

**[Learn more, Memberships starting at \\$2.50/m!](#)**

**Follow me  
on Twitter!**

@ConvertingColor