

# Converting Colors

Hex(D0B2AA)

Have a look what the booklet for  
Hex(D0B2AA) contains.

<b>Hex(D0B2AA)</b> .....	3
<b><i>Conversions</i></b> .....	4
<b><i>Details</i></b> .....	6
<b><i>Harmonies</i></b> .....	11
<b><i>Previews</i></b> .....	23
<b><i>Color Blindness Simulation</i></b> .....	26
<b><i>CSS Examples</i></b> .....	29

# **Color**

**Hex(D0B2AA)**

# Conversions

## Conversions Part 1

<b>Format</b>	<b>Color</b>
Hex	D0B2AA
RGB	208, 178, 170
RGB Percent	82%, 70%, 67%
CMY	0.1843, 0.3020, 0.3333
CMYK	0.00, 0.14, 0.18, 0.18
HSL	13°, 29%, 74%
HSV	13°, 18%, 82%
XYZ	49.1885, 48.1530, 44.7321
YIQ	186.0580, 20.4480, 3.8720

# Conversions

## Conversions Part 2

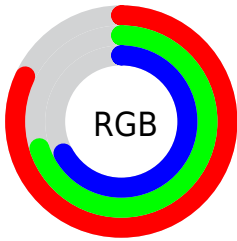
<b>Format</b>	<b>Color</b>
R <sub>Y</sub> B	208, 180, 170
Decimal	13677226
CIE Lab	74.92, 9.53, 8.08
CIE LCh	75, 12.495, 40.300
Yxy	48.1530, 0.3462, 0.3389
Android (android.graphics.Color)	4291867306 (0xFFD0B2AA)
YUV	186.0580, -7.9166, 19.2431
Hunter-Lab	69.3923, 5.0925, 10.3547

# Details

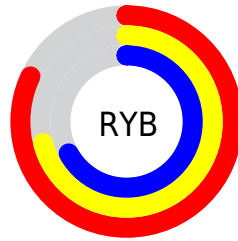
The Hex color **D0B2AA** is a light color, and the websafe version is hex **CC9999**. A complement of this color would be **AAC8D0**, and the grayscale version is **BABABA**.

A 20% lighter version of the original color is **FFEAE1**, and **997D76** is the 20% darker color. If you saturate the color by 10%, you get **D0A295**, and if you desaturate by 10%, it is **D0C2BF**.

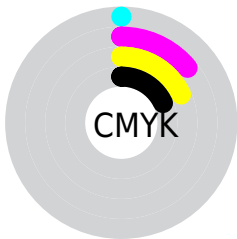
# Distribution



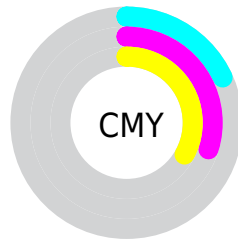
- Red (82%)
- Green (70%)
- Blue (67%)



- Red (82%)
- Yellow (71%)
- Blue (67%)



- Cyan (0%)
- Magenta (14%)
- Yellow (18%)
- Black (18%)



- Cyan (18%)
- Magenta (30%)
- Yellow (33%)

# Brightness & Saturation Gradients

These gradients show how the Hex color D0B2AA changes by changing the brightness by 10 percent. The first figure shows a shift by +10% for each color and the second figure -10%.

Similar to the brightness gradients but the following saturation gradients show a change of the Hex color D0B2AA by changing the saturation by 10% instead.



 D0B2AA

 D0B2AA

FFFFFF

 B49790

 FFEAE1

 997D76

FFFFFFE

 7F645D

 664C46

 4D362F

 36201B

 220A00

 000000

 D0B2AA

 D0B2AA

 D0A295

 D0C2BF

 D09180

 D0D3D4

 D0816C

 D0E3E8

 D07057

 D0F4FD

 D06042

 D0FFFF

 D04F2D

 D03F18

 D02F04

 D02C00

# Harmonies

## Analogous

The Analogous color harmony consists of three colors that are next to each other on the color wheel.



D1B1B5



D0B2AA



C9B5A3

# Triad

The Triadic color harmony groups three colors that are evenly spaced from another and form a triangle on the color wheel.



D0B2AA



A4BFB0



B1B8CF

# Complementary

The Complementary color scheme is a pair of colors which are on the opposite of each other on the color wheel.



D0B2AA



AAC8D0

# Split Complementary

Split-complementary colors differ from the complementary color scheme. The scheme consists of three colors, the original color and two neighbors of the complement color.



A4BCCE



D0B2AA



9DBFBC

# Square

The Square scheme is like the rectangle color scheme, but the four colors are evenly spaced on the color wheel.



D0B2AA



B0BCA7



9CBEC7



C0B4CA

# Rectangle

The Rectangle color scheme consists of four colors that form a rectangle on the color wheel.



D0B2AA



C2B8A2



9CBEC7



ACB9CF

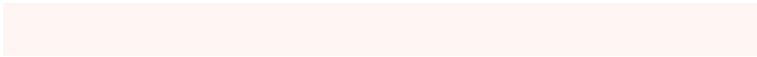


# Sweetspot

The Sweet Spot groups the original color and five complimentary colors.



D0B2AA



FFF5F2



D0AAC8



807978



000000



808080



# Same Dimension

The Same Dimension uses a secret algorithm to generate beautiful new colors.



D0B2AA



FFD3C7



D0C5AA



69605E



A82300



290900

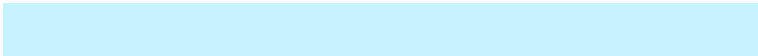


# Inverse Universe

The Inverse Universe completely reimagines the original color for something new.



AAC8D0



C7F3FF



AAB5D0



5E6669



0085A8

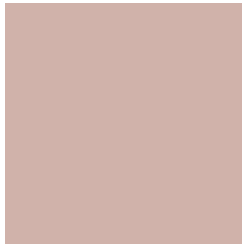


002029



# Previews

## White Background



This preview shows how the Hex color D0B2AA looks on a white background.

## Color Contrast Check

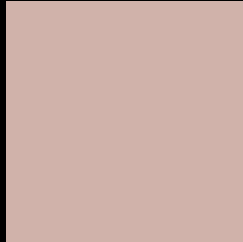
Large Text (above 18pt) WCAG AA × Fail

Any Text WCAG AA × Fail

Large Text (above 18pt) WCAG AAA × Fail

Any Text WCAG AAA × Fail

# Black Background



This preview shows how the Hex color D0B2AA looks on a black background.

## Color Contrast Check

Large Text (above 18pt) WCAG AA ✓ Pass

Any Text WCAG AA ✓ Pass

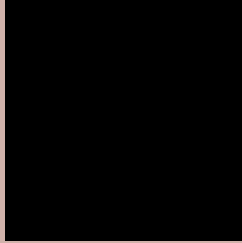
Large Text (above 18pt) WCAG AAA ✓ Pass

Any Text WCAG AAA ✓ Pass

If you want to check with other color combinations, try the [Color Contrast Checker](#).



## Hex D0B2AA Background



This preview shows how black text looks on a background with the Hex color D0B2AA.

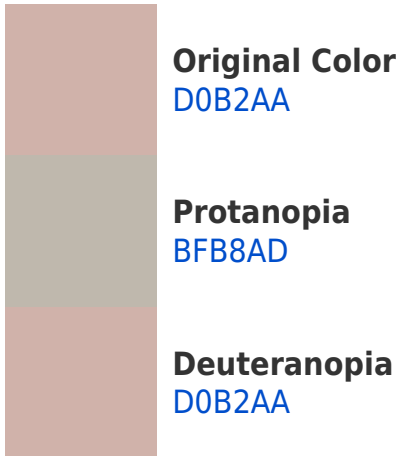


This preview shows how white text looks on a background with the Hex color D0B2AA.

# Color Blindness Simulation

Color vision deficiency is a very complex topic, and I could not describe the different causes any better than Wikipedia does, so if you want to learn more, you should check out their [article about color blindness](#).

## Dichromacy





**Tritanopia**  
D2AFBD

# Trichromacy



**Original Color**  
D0B2AA

**Protanomaly**  
C5B6AC

**Deuteranomaly**  
D0B2AA

**Tritanomaly**  
D1B0B6

# Monochromacy



**Original Color**  
D0B2AA

**Achromatopsia**  
BABABA

**Achromatomaly**  
C2B7B4

# CSS Examples

## Text

The CSS property to change the color of the text to Hex D0B2AA is called "color". The color property can be set on classes, ids or directly on the HTML element.

This example shows how text in the color #D0B2AA looks like.

```
.text, #text, p{  
    color:#D0B2AA  
}
```

If you want to add a text shadow in that color use the text-shadow property, you can generate a text shadow directly with our [CSS Text Shadow Generator](#).

Here you see how black text with a 4 pixel #D0B2AA colored shadow looks like.

```
.shadow{ text-shadow: 4px 4px 2px #D0B2AA
}
```

## Border

The CSS property to change the border of an element to Hex D0B2AA is called "border". The border property can be set on classes, ids or directly on the HTML element.

This example shows the color as border, it can be applied via the CSS property "border" or "border-color".

```
.border, #border, table{ border:4px solid
#D0B2AA }
```

If only the border color should be changed use the property `border-color`.

```
.border{ border-color:#D0B2AA }
```

If you want to add a box shadow in that color use:

Here you see how a box with a 4 pixel #D0B2AA colored shadow looks like.

```
.boxshadow{ -moz-box-shadow:4px 4px 4px  
4px #D0B2AA; -webkit-box-shadow:4px 4px  
4px 4px #D0B2AA; box-shadow:4px 4px 4px  
4px #D0B2AA }
```

# Background

The CSS property to change the background color of an element to Hex D0B2AA is called "background". The background property can be set on classes, ids or directly on the HTML element.

```
.background, #background, body{  
background:#D0B2AA }
```

If only the background color should be changed can be used:

```
.background{ background-color:#D0B2AA }
```

This example shows the color as background, it is applied via the CSS property "background".

To optimize and compress your CSS code, you can use our [online CSS compressor and optimizer](#) based on csstidy. If you want to create a linear or radial gradient as background or border, check our [CSS Gradient Generator](#).



Hey! You found this booklet interesting? Support Converting Colors with the new Membership Option!

The pro membership hides all ads, plus gives you double the colors in the color bucket, and more awesome pro features!

**[Learn more, Memberships starting at \\$2.50/m!](#)**

**Follow me  
on Twitter!**

@ConvertingColor