

Converting Colors

Hex(D0B3B5)

Have a look what the booklet for
Hex(D0B3B5) contains.

Hex(D0B3B5)	3
<i>Conversions</i>	4
<i>Details</i>	6
<i>Harmonies</i>	11
<i>Previews</i>	23
<i>Color Blindness Simulation</i>	26
<i>CSS Examples</i>	29

Color

Hex(D0B3B5)

Conversions

Conversions Part 1

Format	Color
Hex	D0B3B5
RGB	208, 179, 181
RGB Percent	82%, 70%, 71%
CMY	0.1843, 0.2980, 0.2902
CMYK	0.00, 0.14, 0.13, 0.18
HSL	356°, 24%, 76%
HSV	356°, 14%, 82%
XYZ	50.4730, 48.9863, 50.5111
YIQ	187.8990, 16.6420, 6.7700

Conversions

Conversions Part 2

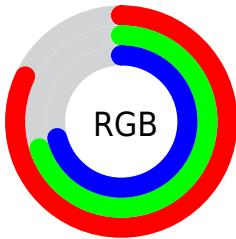
Format	Color
RYB	208, 179, 181
Decimal	13677493
CIELab	75.44, 10.75, 2.84
CIELCh	75, 11.114, 14.782
Yxy	48.9863, 0.3366, 0.3266
Android (android.graphics.Color)	4291867573 (0xFFD0B3B5)
YUV	187.8990, -3.4012, 17.6286
Hunter-Lab	69.9902, 6.2413, 6.2042

Details

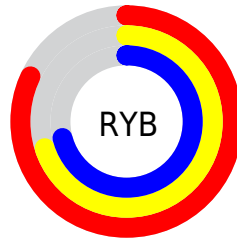
The Hex color **D0B3B5** is a light color, and the websafe version is hex **CC9999**. A complement of this color would be **B3D0CE**, and the grayscale version is **BCBCBC**.

A 20% lighter version of the original color is **FFEDED**, and **997E80** is the 20% darker color. If you saturate the color by 10%, you get **D09EA2**, and if you desaturate by 10%, it is **D0C8C8**.

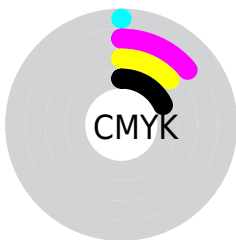
Distribution



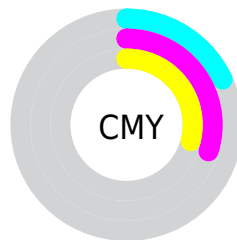
- Red (82%)
- Green (70%)
- Blue (71%)



- Red (82%)
- Yellow (70%)
- Blue (71%)



- Cyan (0%)
- Magenta (14%)
- Yellow (13%)
- Black (18%)



- Cyan (18%)
- Magenta (30%)
- Yellow (29%)

Brightness & Saturation Gradients

These gradients show how the Hex color D0B3B5 changes by changing the brightness by 10 percent. The first figure shows a shift by +10% for each color and the second figure -10%.

Similar to the brightness gradients but the following saturation gradients show a change of the Hex color D0B3B5 by changing the saturation by 10% instead.

 D0B3B5

 D0B3B5

FFFFFF

 B4989A

 FFEDED

 997E80

 7F6567

 664D4F

 4E3638

 362123

 210B0D

 000000

 D0B3B5

 D0B3B5

 D09EA2

 D0C8C8

 D0898E

 D0DDDC

 D0757B

 D0F1EF

 D06068

 D0FFFF

 D04B54

 D03641

 D0212D

 D00D1A

 D0000E

Harmonies

Analogous

The Analogous color harmony consists of three colors that are next to each other on the color wheel.



CCB3BF



D0B3B5



CEB4AC

Triad

The Triadic color harmony groups three colors that are evenly spaced from another and form a triangle on the color wheel.



D0B3B5



B1BEAB



A9BCCD

Complementary

The Complementary color scheme is a pair of colors which are on the opposite of each other on the color wheel.



D0B3B5



B3D0CE

Split Complementary

Split-complementary colors differ from the complementary color scheme. The scheme consists of three colors, the original color and two neighbors of the complement color.



A2BFC8



D0B3B5



A7C0B4

Square

The Square scheme is like the rectangle color scheme, but the four colors are evenly spaced on the color wheel.



D0B3B5



BDBBA6



A1C0BF



B5B9CD

Rectangle

The Rectangle color scheme consists of four colors that form a rectangle on the color wheel.



D0B3B5



CAB6A8



A1C0BF



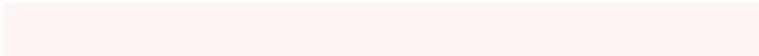
A6BDCC

Sweetspot

The Sweet Spot groups the original color and five complimentary colors.



D0B3B5



FFF5F6



CEB3D0



80797A



000000



808080

Same Dimension

The Same Dimension uses a secret algorithm to generate beautiful new colors.



D0B3B5



FFD4D7



D0BFB3



695E5F



A8000C



290003

Inverse Universe

The Inverse Universe completely reimagines the original color for something new.



D0B3B5



FFD4D7



B3C4D0



695E5F



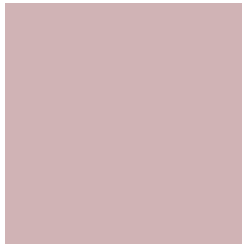
A8000C



290003

Previews

White Background



This preview shows how the Hex color D0B3B5 looks on a white background.

Color Contrast Check

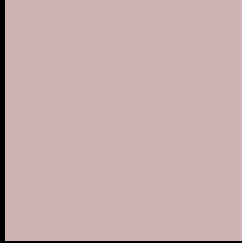
Large Text (above 18pt) WCAG AA × Fail

Any Text WCAG AA × Fail

Large Text (above 18pt) WCAG AAA × Fail

Any Text WCAG AAA × Fail

Black Background



This preview shows how the Hex color D0B3B5 looks on a black background.

Color Contrast Check

Large Text (above 18pt) WCAG AA ✓ Pass

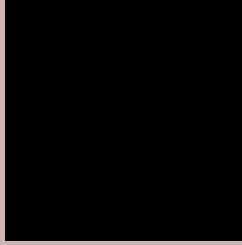
Any Text WCAG AA ✓ Pass

Large Text (above 18pt) WCAG AAA ✓ Pass

Any Text WCAG AAA ✓ Pass

If you want to check with other color combinations, try the [Color Contrast Checker](#).

Hex D0B3B5 Background



This preview shows how black text looks on a background with the Hex color D0B3B5.

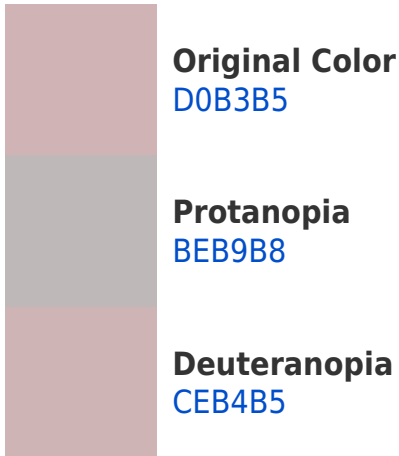


This preview shows how white text looks on a background with the Hex color D0B3B5.

Color Blindness Simulation

Color vision deficiency is a very complex topic, and I could not describe the different causes any better than Wikipedia does, so if you want to learn more, you should check out their [article about color blindness](#).

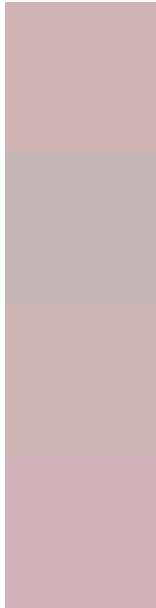
Dichromacy





Tritanopia
D1B1BF

Trichromacy



Original Color
D0B3B5

Protanomaly
C5B7B7

Deuteranomaly
CFB4B5

Tritanomaly
D1B2BB

Monochromacy



Original Color
D0B3B5

Achromatopsia
BCBCBC

Achromatomaly
C3B9B9

CSS Examples

Text

The CSS property to change the color of the text to Hex D0B3B5 is called "color". The color property can be set on classes, ids or directly on the HTML element.

This example shows how text in the color #D0B3B5 looks like.

```
.text, #text, p{  
    color:#D0B3B5  
}
```

If you want to add a text shadow in that color use the text-shadow property, you can generate a text shadow directly with our [CSS Text Shadow Generator](#).

Here you see how black text with a 4 pixel #D0B3B5 colored shadow looks like.

```
.shadow{ text-shadow: 4px 4px 2px #D0B3B5
}
```

Border

The CSS property to change the border of an element to Hex D0B3B5 is called "border". The border property can be set on classes, ids or directly on the HTML element.

This example shows the color as border, it can be applied via the CSS property "border" or "border-color".

```
.border, #border, table{ border:4px solid
#D0B3B5 }
```

If only the border color should be changed use the property `border-color`.

```
.border{ border-color:#D0B3B5 }
```

If you want to add a box shadow in that color use:

Here you see how a box with a 4 pixel #D0B3B5 colored shadow looks like.

```
.boxshadow{ -moz-box-shadow:4px 4px 4px  
4px #D0B3B5; -webkit-box-shadow:4px 4px  
4px 4px #D0B3B5; box-shadow:4px 4px 4px  
4px #D0B3B5 }
```

Background

The CSS property to change the background color of an element to Hex D0B3B5 is called "background". The background property can be set on classes, ids or directly on the HTML element.

```
.background, #background, body{  
background:#D0B3B5 }
```

If only the background color should be changed can be used:

```
.background{ background-color:#D0B3B5 }
```

This example shows the color as background, it is applied via the CSS property "background".

To optimize and compress your CSS code, you can use our [online CSS compressor and optimizer](#) based on csstidy. If you want to create a linear or radial gradient as background or border, check our [CSS Gradient Generator](#).

Hey! You found this booklet interesting? Support Converting Colors with the new Membership Option!

The pro membership hides all ads, plus gives you double the colors in the color bucket, and more awesome pro features!

[Learn more, Memberships starting at \\$2.50/m!](#)

**Follow me
on Twitter!**

@ConvertingColor