

Converting Colors

Hex(D0B4A5)

Have a look what the booklet for
Hex(D0B4A5) contains.

Hex(D0B4A5)	3
<i>Conversions</i>	4
<i>Details</i>	6
<i>Harmonies</i>	11
<i>Previews</i>	23
<i>Color Blindness Simulation</i>	26
<i>CSS Examples</i>	29

Color

Hex(D0B4A5)

Conversions

Conversions Part 1

Format	Color
Hex	D0B4A5
RGB	208, 180, 165
RGB Percent	82%, 71%, 65%
CMY	0.1843, 0.2941, 0.3529
CMYK	0.00, 0.13, 0.21, 0.18
HSL	21°, 31%, 73%
HSV	21°, 21%, 82%
XYZ	49.1252, 48.7690, 42.4215
YIQ	186.6620, 21.5030, 1.2710

Conversions

Conversions Part 2

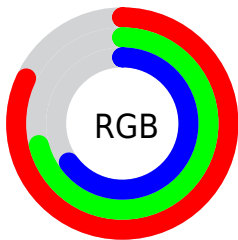
Format	Color
RYB	208, 188, 165
Decimal	13677733
CIELab	75.31, 7.69, 11.35
CIELCh	75, 13.714, 55.877
Yxy	48.7690, 0.3501, 0.3476
Android (android.graphics.Color)	4291867813 (0xFFD0B4A5)
YUV	186.6620, -10.6794, 18.7134
Hunter-Lab	69.8348, 3.3546, 12.8684

Details

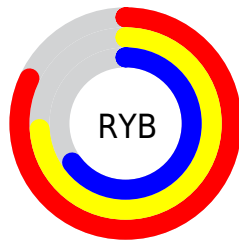
The Hex color **D0B4A5** is a light color, and the websafe version is hex **CC9999**. A complement of this color would be **A5C1D0**, and the grayscale version is **BBBBBB**.

A 20% lighter version of the original color is **FFECDC**, and **997F71** is the 20% darker color. If you saturate the color by 10%, you get **D0A690**, and if you desaturate by 10%, it is **D0C2BA**.

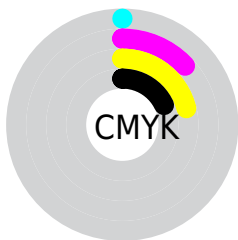
Distribution



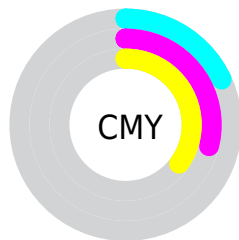
- Red (82%)
- Green (71%)
- Blue (65%)



- Red (82%)
- Yellow (74%)
- Blue (65%)



- Cyan (0%)
- Magenta (13%)
- Yellow (21%)
- Black (18%)



- Cyan (18%)
- Magenta (29%)
- Yellow (35%)

Brightness & Saturation Gradients

These gradients show how the Hex color D0B4A5 changes by changing the brightness by 10 percent. The first figure shows a shift by +10% for each color and the second figure -10%.

Similar to the brightness gradients but the following saturation gradients show a change of the Hex color D0B4A5 by changing the saturation by 10% instead.

 D0B4A5

 D0B4A5

FFFFFF

 B4998B

 FFECDC

 997F71

 FFFFFFF9

 7F6659

 654E41

 4D372B

 352217

 210C00

 000000

 D0B4A5

 D0B4A5

 D0A690

 D0C2BA

 D0997B

 D0CFCF

 D08B67

 D0DDE3

 D07E52

 D0EAF8

 D0703D

 D0F8FF

 D06328

 D0FFFF

 D05513

 D04900

Harmonies

Analogous

The Analogous color harmony consists of three colors that are next to each other on the color wheel.



D5B1AF



D0B4A5



C6B8A0

Triad

The Triadic color harmony groups three colors that are evenly spaced from another and form a triangle on the color wheel.



D0B4A5



9EC1B7



BAB7D0

Complementary

The Complementary color scheme is a pair of colors which are on the opposite of each other on the color wheel.



D0B4A5



A5C1D0

Split Complementary

Split-complementary colors differ from the complementary color scheme. The scheme consists of three colors, the original color and two neighbors of the complement color.



AABBD2



D0B4A5



99C1C4

Square

The Square scheme is like the rectangle color scheme, but the four colors are evenly spaced on the color wheel.



D0B4A5



A9BFAB



9EBFCE



C8B3C8

Rectangle

The Rectangle color scheme consists of four colors that form a rectangle on the color wheel.



D0B4A5



BDBBA1



9EBFCE



B4B8D2

Sweetspot

The Sweet Spot groups the original color and five complimentary colors.



D0B4A5



FFF5F0



D0A5C2



807A77



000000



808080

Same Dimension

The Same Dimension uses a secret algorithm to generate beautiful new colors.



D0B4A5



FFD5BF



D0C9A5



69625E



A83B00



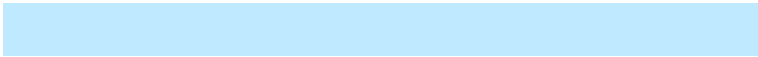
290E00

Inverse Universe

The Inverse Universe completely reimagines the original color for something new.



A5C1D0



BFE9FF



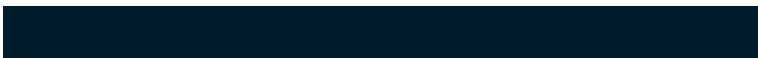
A5ACD0



5E6569



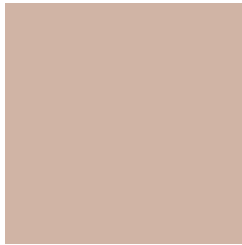
006EA8



001B29

Previews

White Background



This preview shows how the Hex color D0B4A5 looks on a white background.

Color Contrast Check

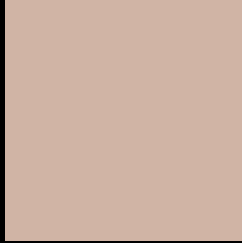
Large Text (above 18pt) WCAG AA × Fail

Any Text WCAG AA × Fail

Large Text (above 18pt) WCAG AAA × Fail

Any Text WCAG AAA × Fail

Black Background



This preview shows how the Hex color D0B4A5 looks on a black background.

Color Contrast Check

Large Text (above 18pt) WCAG AA ✓ Pass

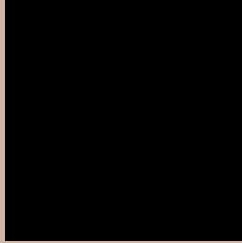
Any Text WCAG AA ✓ Pass

Large Text (above 18pt) WCAG AAA ✓ Pass

Any Text WCAG AAA ✓ Pass

If you want to check with other color combinations, try the [Color Contrast Checker](#).

Hex D0B4A5 Background



This preview shows how black text looks on a background with the Hex color D0B4A5.

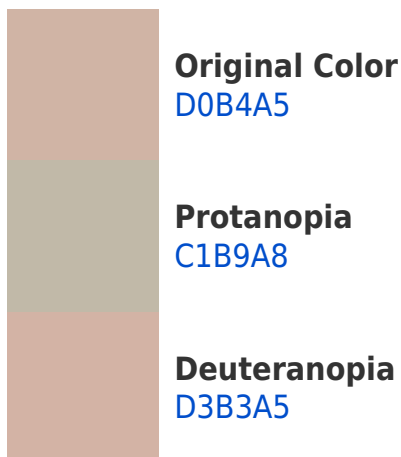



This preview shows how white text looks on a background with the Hex color D0B4A5.

Color Blindness Simulation

Color vision deficiency is a very complex topic, and I could not describe the different causes any better than Wikipedia does, so if you want to learn more, you should check out their [article about color blindness](#).

Dichromacy





Tritanopia
D3B0BE

Trichromacy



Original Color
D0B4A5

Protanomaly
C6B7A7

Deuteranomaly
D2B3A5

Tritanomaly
D2B1B5

Monochromacy



Original Color
D0B4A5

Achromatopsia
BBBBBB

Achromatomaly
C3B8B3

CSS Examples

Text

The CSS property to change the color of the text to Hex D0B4A5 is called "color". The color property can be set on classes, ids or directly on the HTML element.

This example shows how text in the color #D0B4A5 looks like.

```
.text, #text, p{  
    color:#D0B4A5  
}
```

If you want to add a text shadow in that color use the text-shadow property, you can generate a text shadow directly with our [CSS Text Shadow Generator](#).

Here you see how black text with a 4 pixel #D0B4A5 colored shadow looks like.

```
.shadow{ text-shadow: 4px 4px 2px #D0B4A5
}
```

Border

The CSS property to change the border of an element to Hex D0B4A5 is called "border". The border property can be set on classes, ids or directly on the HTML element.

This example shows the color as border, it can be applied via the CSS property "border" or "border-color".

```
.border, #border, table{ border:4px solid
#D0B4A5 }
```

If only the border color should be changed use the property `border-color`.

```
.border{ border-color:#D0B4A5 }
```

If you want to add a box shadow in that color use:

Here you see how a box with a 4 pixel #D0B4A5 colored shadow looks like.

```
.boxshadow{ -moz-box-shadow:4px 4px 4px  
4px #D0B4A5; -webkit-box-shadow:4px 4px  
4px 4px #D0B4A5; box-shadow:4px 4px 4px  
4px #D0B4A5 }
```

Background

The CSS property to change the background color of an element to Hex D0B4A5 is called "background". The background property can be set on classes, ids or directly on the HTML element.

```
.background, #background, body{  
background:#D0B4A5 }
```

If only the background color should be changed can be used:

```
.background{ background-color:#D0B4A5 }
```

This example shows the color as background, it is applied via the CSS property "background".

To optimize and compress your CSS code, you can use our [online CSS compressor and optimizer](#) based on csstidy. If you want to create a linear or radial gradient as background or border, check our [CSS Gradient Generator](#).

Hey! You found this booklet interesting? Support Converting Colors with the new Membership Option!

The pro membership hides all ads, plus gives you double the colors in the color bucket, and more awesome pro features!

[Learn more, Memberships starting at \\$2.50/m!](#)

**Follow me
on Twitter!**

@ConvertingColor