

# Converting Colors

Hex(D0B4A8)

Have a look what the booklet for  
Hex(D0B4A8) contains.

<b>Hex(D0B4A8)</b> .....	3
<b><i>Conversions</i></b> .....	4
<b><i>Details</i></b> .....	6
<b><i>Harmonies</i></b> .....	11
<b><i>Previews</i></b> .....	23
<b><i>Color Blindness Simulation</i></b> .....	26
<b><i>CSS Examples</i></b> .....	29

# **Color**

**Hex(D0B4A8)**

# Conversions

## Conversions Part 1

Format	Color
Hex	D0B4A8
RGB	208, 180, 168
RGB Percent	82%, 71%, 66%
CMY	0.1843, 0.2941, 0.3412
CMYK	0.00, 0.13, 0.19, 0.18
HSL	18°, 30%, 74%
HSV	18°, 19%, 82%
XYZ	49.4016, 48.8796, 43.8767
YIQ	187.0040, 20.5400, 2.2040

# Conversions

## Conversions Part 2

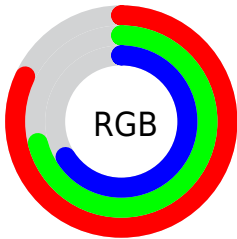
Format	Color
R <sub>Y</sub> B	208, 185, 168
Decimal	13677736
CIE Lab	75.38, 8.15, 9.82
CIE LCh	75, 12.760, 50.320
Yxy	48.8796, 0.3475, 0.3438
Android (android.graphics.Color)	4291867816 (0xFFD0B4A8)
YUV	187.0040, -9.3690, 18.4135
Hunter-Lab	69.9139, 3.7797, 11.7304

# Details

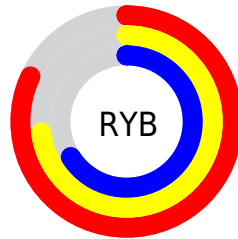
The Hex color **D0B4A8** is a light color, and the websafe version is hex **CC9999**. A complement of this color would be **A8C4D0**, and the grayscale version is **BBBBBB**.

A 20% lighter version of the original color is **FFECDF**, and **997F74** is the 20% darker color. If you saturate the color by 10%, you get **D0A593**, and if you desaturate by 10%, it is **D0C3BD**.

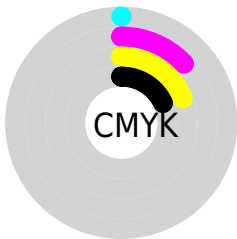
# Distribution



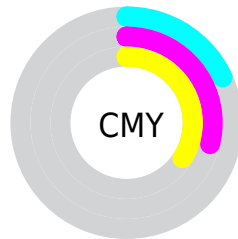
- Red (82%)
- Green (71%)
- Blue (66%)



- Red (82%)
- Yellow (73%)
- Blue (66%)



- Cyan (0%)
- Magenta (13%)
- Yellow (19%)
- Black (18%)



- Cyan (18%)
- Magenta (29%)
- Yellow (34%)

# Brightness & Saturation Gradients

These gradients show how the Hex color D0B4A8 changes by changing the brightness by 10 percent. The first figure shows a shift by +10% for each color and the second figure -10%.

Similar to the brightness gradients but the following saturation gradients show a change of the Hex color D0B4A8 by changing the saturation by 10% instead.



 D0B4A8

 D0B4A8

FFFFFF

 B4998E

 FFECDF

 997F74

FFFFFFC

 7F665B

 664E44

 4D372E

 362219

 220C00

 000000

 D0B4A8

 D0B4A8

 D0A593

 D0C3BD

 D0977E

 D0D1D2

 D0886A

 D0E0E6

 D07A55

 D0EEFB

 D06B40

 D0FDFF

 D05D2B

 D0FFFF

 D04E16

 D04002

 D03E00

# Harmonies

## Analogous

The Analogous color harmony consists of three colors that are next to each other on the color wheel.



D3B2B2



D0B4A8



C7B8A3

# Triad

The Triadic color harmony groups three colors that are evenly spaced from another and form a triangle on the color wheel.



D0B4A8



A2C0B5



B7B8D0

# Complementary

The Complementary color scheme is a pair of colors which are on the opposite of each other on the color wheel.



D0B4A8



A8C4D0

# Split Complementary

Split-complementary colors differ from the complementary color scheme. The scheme consists of three colors, the original color and two neighbors of the complement color.



A9BCD0



D0B4A8



9CC1C1

# Square

The Square scheme is like the rectangle color scheme, but the four colors are evenly spaced on the color wheel.



D0B4A8



ADBFAA



9FBFCB



C5B4C9

# Rectangle

The Rectangle color scheme consists of four colors that form a rectangle on the color wheel.



D0B4A8



BFBAA3



9FBFCB



B2B9D1



# Sweetspot

The Sweet Spot groups the original color and five complimentary colors.



D0B4A8



FFF4F0



D0A8C4



807977



000000



808080

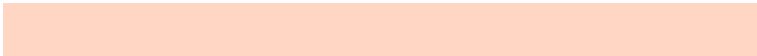


# Same Dimension

The Same Dimension uses a secret algorithm to generate beautiful new colors.



D0B4A8



FFD6C4



D0C8A8



69615E



A83200



290C00

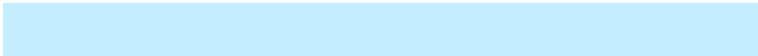


# Inverse Universe

The Inverse Universe completely reimagines the original color for something new.



A8C4D0



C4EDFF



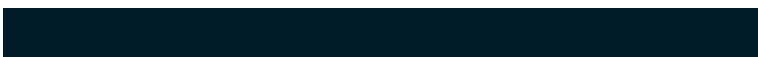
A8B0D0



5E6569



0076A8



001D29



# Previews

## White Background



This preview shows how the Hex color D0B4A8 looks on a white background.

## Color Contrast Check

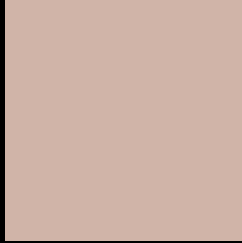
Large Text (above 18pt) WCAG AA × Fail

Any Text WCAG AA × Fail

Large Text (above 18pt) WCAG AAA × Fail

Any Text WCAG AAA × Fail

# Black Background



This preview shows how the Hex color D0B4A8 looks on a black background.

## Color Contrast Check

Large Text (above 18pt) WCAG AA ✓ Pass

Any Text WCAG AA ✓ Pass

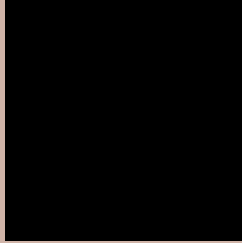
Large Text (above 18pt) WCAG AAA ✓ Pass

Any Text WCAG AAA ✓ Pass

If you want to check with other color combinations, try the [Color Contrast Checker](#).



## Hex D0B4A8 Background



This preview shows how black text looks on a background with the Hex color D0B4A8.



This preview shows how white text looks on a background with the Hex color D0B4A8.

# Color Blindness Simulation

Color vision deficiency is a very complex topic, and I could not describe the different causes any better than Wikipedia does, so if you want to learn more, you should check out their [article about color blindness](#).

## Dichromacy



**Original Color**  
D0B4A8

**Protanopia**  
C1B9AB

**Deuteranopia**  
D2B3A8



**Tritanopia**  
D3B1BE

# Trichromacy



**Original Color**  
D0B4A8

**Protanomaly**  
C6B7AA

**Deuteranomaly**  
D1B3A8

**Tritanomaly**  
D2B2B6

# Monochromacy



**Original Color**  
D0B4A8

**Achromatopsia**  
BBBBBB

**Achromatomaly**  
C3B8B4

# CSS Examples

## Text

The CSS property to change the color of the text to Hex D0B4A8 is called "color". The color property can be set on classes, ids or directly on the HTML element.

This example shows how text in the color #D0B4A8 looks like.

```
.text, #text, p{  
    color:#D0B4A8  
}
```

If you want to add a text shadow in that color use the text-shadow property, you can generate a text shadow directly with our [CSS Text Shadow Generator](#).

Here you see how black text with a 4 pixel #D0B4A8 colored shadow looks like.

```
.shadow{ text-shadow: 4px 4px 2px #D0B4A8
}
```

## Border

The CSS property to change the border of an element to Hex D0B4A8 is called "border". The border property can be set on classes, ids or directly on the HTML element.

This example shows the color as border, it can be applied via the CSS property "border" or "border-color".

```
.border, #border, table{ border:4px solid
#D0B4A8 }
```

If only the border color should be changed use the property `border-color`.

```
.border{ border-color:#D0B4A8 }
```

If you want to add a box shadow in that color use:

Here you see how a box with a 4 pixel #D0B4A8 colored shadow looks like.

```
.boxshadow{ -moz-box-shadow:4px 4px 4px  
4px #D0B4A8; -webkit-box-shadow:4px 4px  
4px 4px #D0B4A8; box-shadow:4px 4px 4px  
4px #D0B4A8 }
```

# Background

The CSS property to change the background color of an element to Hex D0B4A8 is called "background". The background property can be set on classes, ids or directly on the HTML element.

```
.background, #background, body{  
background:#D0B4A8 }
```

If only the background color should be changed can be used:

```
.background{ background-color:#D0B4A8 }
```

This example shows the color as background, it is applied via the CSS property "background".

To optimize and compress your CSS code, you can use our [online CSS compressor and optimizer](#) based on csstidy. If you want to create a linear or radial gradient as background or border, check our [CSS Gradient Generator](#).



Hey! You found this booklet interesting? Support Converting Colors with the new Membership Option!

The pro membership hides all ads, plus gives you double the colors in the color bucket, and more awesome pro features!

**[Learn more, Memberships starting at \\$2.50/m!](#)**

**Follow me  
on Twitter!**

@ConvertingColor