

Converting Colors

Hex(D0B4B4)

Have a look what the booklet for
Hex(D0B4B4) contains.

Hex(D0B4B4)	3
<i>Conversions</i>	4
<i>Details</i>	6
<i>Harmonies</i>	11
<i>Previews</i>	23
<i>Color Blindness Simulation</i>	26
<i>CSS Examples</i>	29

Color

Hex(D0B4B4)

Conversions

Conversions Part 1

Format	Color
Hex	D0B4B4
RGB	208, 180, 180
RGB Percent	82%, 71%, 71%
CMY	0.1843, 0.2941, 0.2941
CMYK	0.00, 0.13, 0.13, 0.18
HSL	0°, 23%, 76%
HSV	0°, 13%, 82%
XYZ	50.5719, 49.3477, 50.0396
YIQ	188.3720, 16.6880, 5.9360

Conversions

Conversions Part 2

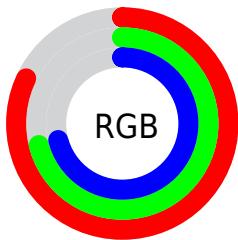
Format	Color
R _Y B	208, 180, 180
Decimal	13677748
CIE Lab	75.67, 10.04, 3.71
CIE LCh	76, 10.705, 20.253
Yxy	49.3477, 0.3372, 0.3291
Android (android.graphics.Color)	4291867828 (0xFFD0B4B4)
YUV	188.3720, -4.1274, 17.2138
Hunter-Lab	70.2479, 5.5694, 6.9395

Details

The Hex color **D0B4B4** is a light color, and the websafe version is hex **CC9999**. A complement of this color would be **B4D0D0**, and the grayscale version is **BCBCBC**.

A 20% lighter version of the original color is **FFECEC**, and **997F7F** is the 20% darker color. If you saturate the color by 10%, you get **D09F9F**, and if you desaturate by 10%, it is **D0C9C9**.

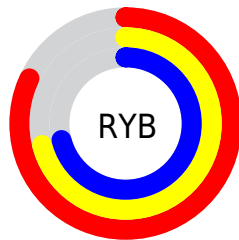
Distribution



Red (82%)

Green (71%)

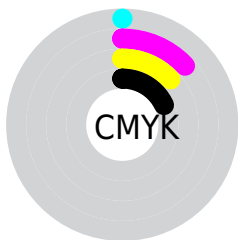
Blue (71%)



Red (82%)

Yellow (71%)

Blue (71%)

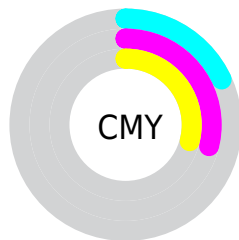


Cyan (0%)

Magenta (13%)

Yellow (13%)

Black (18%)



Cyan (18%)

Magenta (29%)

Yellow (29%)

Brightness & Saturation Gradients

These gradients show how the Hex color D0B4B4 changes by changing the brightness by 10 percent. The first figure shows a shift by +10% for each color and the second figure -10%.

Similar to the brightness gradients but the following saturation gradients show a change of the Hex color D0B4B4 by changing the saturation by 10% instead.

 D0B4B4

 D0B4B4

FFFFFF

 B49999

 FFECEC

 997F7F

 7F6666

 664E4E

 4E3738

 362222

 210C0C

 000000

 D0B4B4

 D0B4B4

 D09F9F

 D0C9C9

 D08A8A

 D0DEDE

 D07676

 D0F2F2

 D06161

 D0FFFF

 D04C4C

 D03737

 D02222

 D00E0E

 D00000

Harmonies

Analogous

The Analogous color harmony consists of three colors that are next to each other on the color wheel.



CDB4BE



D0B4B4



CDB6AC

Triad

The Triadic color harmony groups three colors that are evenly spaced from another and form a triangle on the color wheel.



D0B4B4



B0BFAE



ADBCCE

Complementary

The Complementary color scheme is a pair of colors which are on the opposite of each other on the color wheel.



D0B4B4



B4D0D0

Split Complementary

Split-complementary colors differ from the complementary color scheme. The scheme consists of three colors, the original color and two neighbors of the complement color.



A4BFC9



D0B4B4



A7C0B7

Square

The Square scheme is like the rectangle color scheme, but the four colors are evenly spaced on the color wheel.



D0B4B4



BBBCA8



A2C0C1



B9B9CD

Rectangle

The Rectangle color scheme consists of four colors that form a rectangle on the color wheel.



D0B4B4



C9B8A8



A2C0C1



A9BDCD

Sweetspot

The Sweet Spot groups the original color and five complimentary colors.



D0B4B4



FFF5F5



D0B4D0



807979



000000



808080

Same Dimension

The Same Dimension uses a secret algorithm to generate beautiful new colors.



D0B4B4



FFD6D6



D0C2B4



695E5E



A80000



290000

Inverse Universe

The Inverse Universe completely reimagines the original color for something new.



B4D0D0



D6FFFF



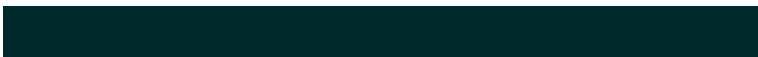
B4C2D0



5E6969



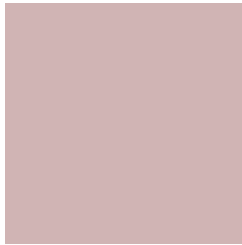
00A8A8



002929

Previews

White Background



This preview shows how the Hex color D0B4B4 looks on a white background.

Color Contrast Check

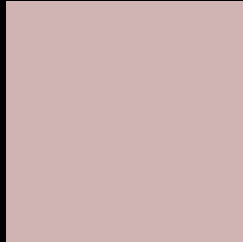
Large Text (above 18pt) WCAG AA × Fail

Any Text WCAG AA × Fail

Large Text (above 18pt) WCAG AAA × Fail

Any Text WCAG AAA × Fail

Black Background



This preview shows how the Hex color D0B4B4 looks on a black background.

Color Contrast Check

Large Text (above 18pt) WCAG AA ✓ Pass

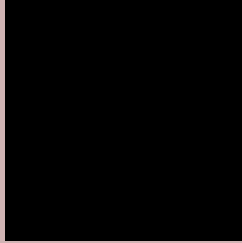
Any Text WCAG AA ✓ Pass

Large Text (above 18pt) WCAG AAA ✓ Pass

Any Text WCAG AAA ✓ Pass

If you want to check with other color combinations, try the [Color Contrast Checker](#).

Hex D0B4B4 Background



This preview shows how black text looks on a background with the Hex color D0B4B4.






This preview shows how white text looks on a background with the Hex color D0B4B4.

Color Blindness Simulation

Color vision deficiency is a very complex topic, and I could not describe the different causes any better than Wikipedia does, so if you want to learn more, you should check out their [article about color blindness](#).

Dichromacy

	Original Color D0B4B4
	Protanopia BFBAB7
	Deuteranopia CFB4B4



Tritanopia
D2B2C0

Trichromacy



Original Color
D0B4B4

Protanomaly
C5B8B6

Deuteranomaly
CFB4B4

Tritanomaly
D1B3BC

Monochromacy



Original Color
D0B4B4

Achromatopsia
BCBCBC

Achromatomaly
C3B9B9

CSS Examples

Text

The CSS property to change the color of the text to Hex D0B4B4 is called "color". The color property can be set on classes, ids or directly on the HTML element.

This example shows how text in the color #D0B4B4 looks like.

```
.text, #text, p{  
    color:#D0B4B4  
}
```

If you want to add a text shadow in that color use the text-shadow property, you can generate a text shadow directly with our [CSS Text Shadow Generator](#).

Here you see how black text with a 4 pixel #D0B4B4 colored shadow looks like.

```
.shadow{ text-shadow: 4px 4px 2px #D0B4B4
}
```

Border

The CSS property to change the border of an element to Hex D0B4B4 is called "border". The border property can be set on classes, ids or directly on the HTML element.

This example shows the color as border, it can be applied via the CSS property "border" or "border-color".

```
.border, #border, table{ border:4px solid
#D0B4B4 }
```

If only the border color should be changed use the property `border-color`.

```
.border{ border-color:#D0B4B4 }
```

If you want to add a box shadow in that color use:

Here you see how a box with a 4 pixel #D0B4B4 colored shadow looks like.

```
.boxshadow{ -moz-box-shadow:4px 4px 4px  
4px #D0B4B4; -webkit-box-shadow:4px 4px  
4px 4px #D0B4B4; box-shadow:4px 4px 4px  
4px #D0B4B4 }
```

Background

The CSS property to change the background color of an element to Hex D0B4B4 is called "background". The background property can be set on classes, ids or directly on the HTML element.

```
.background, #background, body{  
background:#D0B4B4 }
```

If only the background color should be changed can be used:

```
.background{ background-color:#D0B4B4 }
```

This example shows the color as background, it is applied via the CSS property "background".

To optimize and compress your CSS code, you can use our [online CSS compressor and optimizer](#) based on csstidy. If you want to create a linear or radial gradient as background or border, check our [CSS Gradient Generator](#).

Hey! You found this booklet interesting? Support Converting Colors with the new Membership Option!

The pro membership hides all ads, plus gives you double the colors in the color bucket, and more awesome pro features!

[Learn more, Memberships starting at \\$2.50/m!](#)

**Follow me
on Twitter!**

@ConvertingColor