

Converting Colors

Hex(D0B5B4)

Have a look what the booklet for
Hex(D0B5B4) contains.

Hex(D0B5B4)	3
<i>Conversions</i>	4
<i>Details</i>	6
<i>Harmonies</i>	11
<i>Previews</i>	23
<i>Color Blindness Simulation</i>	26
<i>CSS Examples</i>	29

Color

Hex(D0B5B4)

Conversions

Conversions Part 1

Format	Color
Hex	D0B5B4
RGB	208, 181, 180
RGB Percent	82%, 71%, 71%
CMY	0.1843, 0.2902, 0.2941
CMYK	0.00, 0.13, 0.13, 0.18
HSL	2°, 23%, 76%
HSV	2°, 13%, 82%
XYZ	50.7745, 49.7529, 50.1072
YIQ	188.9590, 16.4130, 5.4130

Conversions

Conversions Part 2

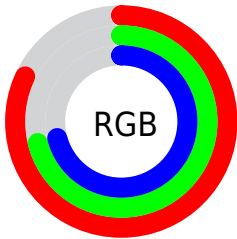
Format	Color
R _Y B	208, 181, 180
Decimal	13678004
CIE Lab	75.92, 9.51, 4.07
CIE LCh	76, 10.339, 23.169
Yxy	49.7529, 0.3371, 0.3303
Android (android.graphics.Color)	4291868084 (0xFFD0B5B4)
YUV	188.9590, -4.4168, 16.6990
Hunter-Lab	70.5358, 5.0540, 7.2566

Details

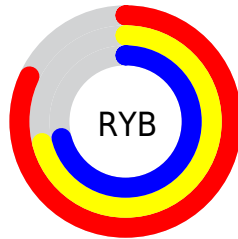
The Hex color **D0B5B4** is a light color, and the websafe version is hex **CCCCCC**. A complement of this color would be **B4CFD0**, and the grayscale version is **BDBDBD**.

A 20% lighter version of the original color is **FFEDEC**, and **99807F** is the 20% darker color. If you saturate the color by 10%, you get **D0A19F**, and if you desaturate by 10%, it is **D0C9C9**.

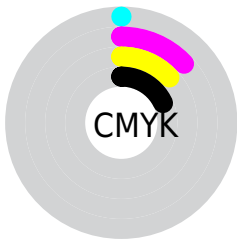
Distribution



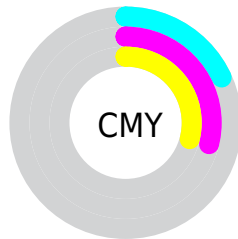
- Red (82%)
- Green (71%)
- Blue (71%)



- Red (82%)
- Yellow (71%)
- Blue (71%)



- Cyan (0%)
- Magenta (13%)
- Yellow (13%)
- Black (18%)



- Cyan (18%)
- Magenta (29%)
- Yellow (29%)

Brightness & Saturation Gradients

These gradients show how the Hex color D0B5B4 changes by changing the brightness by 10 percent. The first figure shows a shift by +10% for each color and the second figure -10%.

Similar to the brightness gradients but the following saturation gradients show a change of the Hex color D0B5B4 by changing the saturation by 10% instead.

 D0B5B4

 D0B5B4

FFFFFF

 B49A99

 FFEDEC

 99807F

 7F6766

 664F4E

 4E3838

 362222

 210D0C

 000000

 D0B5B4

 D0B5B4

 D0A19F

 D0C9C9

 D08D8A

 D0DDDE

 D07976

 D0F1F2

 D06561

 D0FFFF

 D0514C

 D03D37

 D02922

 D0150E

 D00700

Harmonies

Analogous

The Analogous color harmony consists of three colors that are next to each other on the color wheel.



CDB5BE



D0B5B4



CDB7AC

Triad

The Triadic color harmony groups three colors that are evenly spaced from another and form a triangle on the color wheel.



D0B5B4



B0BFAF



AFBDCE

Complementary

The Complementary color scheme is a pair of colors which are on the opposite of each other on the color wheel.



D0B5B4



B4CFD0

Split Complementary

Split-complementary colors differ from the complementary color scheme. The scheme consists of three colors, the original color and two neighbors of the complement color.



A6BFCA



D0B5B4



A7C1B8

Square

The Square scheme is like the rectangle color scheme, but the four colors are evenly spaced on the color wheel.



D0B5B4



BBBDAA



A3C1C2



BAB9CD

Rectangle

The Rectangle color scheme consists of four colors that form a rectangle on the color wheel.



D0B5B4



C8B9A9



A3C1C2



ABBECD

Sweetspot

The Sweet Spot groups the original color and five complimentary colors.



D0B5B4



FFF5F5



D0B4CF



807979



000000



808080

Same Dimension

The Same Dimension uses a secret algorithm to generate beautiful new colors.



D0B5B4



FFD8D6



D0C3B4



695E5E



A80600



290100

Inverse Universe

The Inverse Universe completely reimagines the original color for something new.



B4CFD0



D6FEFF



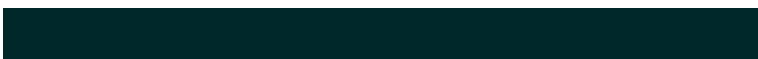
B4C1D0



5E6869



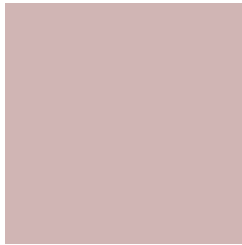
00A2A8



002729

Previews

White Background



This preview shows how the Hex color D0B5B4 looks on a white background.

Color Contrast Check

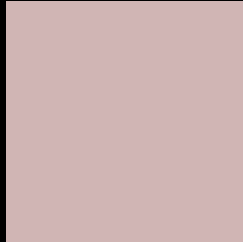
Large Text (above 18pt) WCAG AA × Fail

Any Text WCAG AA × Fail

Large Text (above 18pt) WCAG AAA × Fail

Any Text WCAG AAA × Fail

Black Background



This preview shows how the Hex color D0B5B4 looks on a black background.

Color Contrast Check

Large Text (above 18pt) WCAG AA ✓ Pass

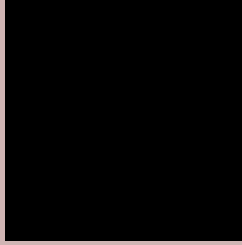
Any Text WCAG AA ✓ Pass

Large Text (above 18pt) WCAG AAA ✓ Pass

Any Text WCAG AAA ✓ Pass

If you want to check with other color combinations, try the [Color Contrast Checker](#).

Hex D0B5B4 Background



This preview shows how black text looks on a background with the Hex color D0B5B4.



This preview shows how white text looks on a background with the Hex color D0B5B4.

Color Blindness Simulation

Color vision deficiency is a very complex topic, and I could not describe the different causes any better than Wikipedia does, so if you want to learn more, you should check out their [article about color blindness](#).

Dichromacy



Original Color
D0B5B4

Protanopia
C0BAB7

Deuteranopia
D0B5B4



Tritanopia
D2B3C1

Trichromacy



Original Color
D0B5B4

Protanomaly
C6B8B6

Deuteranomaly
D0B5B4

Tritanomaly
D1B4BC

Monochromacy



Original Color
D0B5B4

Achromatopsia
BDBDBD

Achromatomaly
C4BABA

CSS Examples

Text

The CSS property to change the color of the text to Hex D0B5B4 is called "color". The color property can be set on classes, ids or directly on the HTML element.

This example shows how text in the color #D0B5B4 looks like.

```
.text, #text, p{  
    color:#D0B5B4  
}
```

If you want to add a text shadow in that color use the text-shadow property, you can generate a text shadow directly with our [CSS Text Shadow Generator](#).

Here you see how black text with a 4 pixel #D0B5B4 colored shadow looks like.

```
.shadow{ text-shadow: 4px 4px 2px #D0B5B4
}
```

Border

The CSS property to change the border of an element to Hex D0B5B4 is called "border". The border property can be set on classes, ids or directly on the HTML element.

This example shows the color as border, it can be applied via the CSS property "border" or "border-color".

```
.border, #border, table{ border:4px solid
#D0B5B4 }
```

If only the border color should be changed use the property `border-color`.

```
.border{ border-color:#D0B5B4 }
```

If you want to add a box shadow in that color use:

Here you see how a box with a 4 pixel #D0B5B4 colored shadow looks like.

```
.boxshadow{ -moz-box-shadow:4px 4px 4px  
4px #D0B5B4; -webkit-box-shadow:4px 4px  
4px 4px #D0B5B4; box-shadow:4px 4px 4px  
4px #D0B5B4 }
```

Background

The CSS property to change the background color of an element to Hex D0B5B4 is called "background". The background property can be set on classes, ids or directly on the HTML element.

```
.background, #background, body{  
background:#D0B5B4 }
```

If only the background color should be changed can be used:

```
.background{ background-color:#D0B5B4 }
```

This example shows the color as background, it is applied via the CSS property "background".

To optimize and compress your CSS code, you can use our [online CSS compressor and optimizer](#) based on csstidy. If you want to create a linear or radial gradient as background or border, check our [CSS Gradient Generator](#).

Hey! You found this booklet interesting? Support Converting Colors with the new Membership Option!

The pro membership hides all ads, plus gives you double the colors in the color bucket, and more awesome pro features!

[Learn more, Memberships starting at \\$2.50/m!](#)

**Follow me
on Twitter!**

@ConvertingColor