

Converting Colors

Hex(D0B7B0)

Have a look what the booklet for
Hex(D0B7B0) contains.

Hex(D0B7B0)	3
<i>Conversions</i>	4
<i>Details</i>	6
<i>Harmonies</i>	11
<i>Previews</i>	23
<i>Color Blindness Simulation</i>	26
<i>CSS Examples</i>	29

Color

Hex(D0B7B0)

Conversions

Conversions Part 1

Format	Color
Hex	D0B7B0
RGB	208, 183, 176
RGB Percent	82%, 72%, 69%
CMY	0.1843, 0.2824, 0.3098
CMYK	0.00, 0.12, 0.15, 0.18
HSL	13°, 25%, 75%
HSV	13°, 15%, 82%
XYZ	50.7824, 50.4115, 48.1282
YIQ	189.6770, 17.1470, 3.1230

Conversions

Conversions Part 2

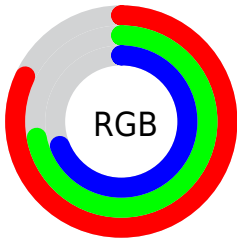
Format	Color
R _Y B	208, 185, 176
Decimal	13678512
CIE Lab	76.32, 7.79, 6.82
CIE LCh	76, 10.353, 41.234
Yxy	50.4115, 0.3401, 0.3376
Android (android.graphics.Color)	4291868592 (0xFFD0B7B0)
YUV	189.6770, -6.7428, 16.0693
Hunter-Lab	71.0010, 3.4176, 9.5109

Details

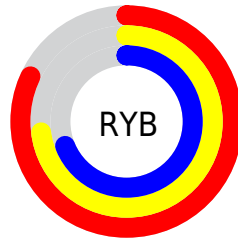
The Hex color **D0B7B0** is a light color, and the websafe version is hex **CCCCCC**. A complement of this color would be **B0C9D0**, and the grayscale version is **BEBEBE**.

A 20% lighter version of the original color is **FFEFE8**, and **99827C** is the 20% darker color. If you saturate the color by 10%, you get **D0A79B**, and if you desaturate by 10%, it is **D0C7C5**.

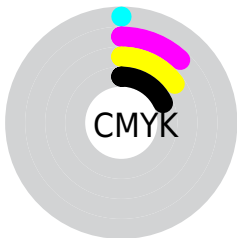
Distribution



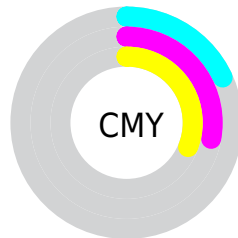
- Red (82%)
- Green (72%)
- Blue (69%)



- Red (82%)
- Yellow (73%)
- Blue (69%)



- Cyan (0%)
- Magenta (12%)
- Yellow (15%)
- Black (18%)



- Cyan (18%)
- Magenta (28%)
- Yellow (31%)

Brightness & Saturation Gradients

These gradients show how the Hex color D0B7B0 changes by changing the brightness by 10 percent. The first figure shows a shift by +10% for each color and the second figure -10%.

Similar to the brightness gradients but the following saturation gradients show a change of the Hex color D0B7B0 by changing the saturation by 10% instead.

 D0B7B0

 D0B7B0

FFFFFF

 B49C95

 FFEFE8

 99827C

 7F6963

 66514B

 4E3A34

 36241F

 210F07

 000000

 D0B7B0

 D0B7B0

 D0A79B

 D0C7C5

 D09786

 D0D8DA

 D08672

 D0E8EE

 D0765D

 D0F8FF

 D06648

 D0FFFF

 D05633

 D0451E

 D0350A

 D02E00

Harmonies

Analogous

The Analogous color harmony consists of three colors that are next to each other on the color wheel.



D1B6B9



D0B7B0



CABAAA

Triad

The Triadic color harmony groups three colors that are evenly spaced from another and form a triangle on the color wheel.



D0B7B0



ABC1B6



B7BCCF

Complementary

The Complementary color scheme is a pair of colors which are on the opposite of each other on the color wheel.



D0B7B0



B0C9D0

Split Complementary

Split-complementary colors differ from the complementary color scheme. The scheme consists of three colors, the original color and two neighbors of the complement color.



ACBFCE



D0B7B0



A5C2C0

Square

The Square scheme is like the rectangle color scheme, but the four colors are evenly spaced on the color wheel.



D0B7B0



B5C0AE



A5C1C8



C3B9CB

Rectangle

The Rectangle color scheme consists of four colors that form a rectangle on the color wheel.



D0B7B0



C4BCA9



A5C1C8



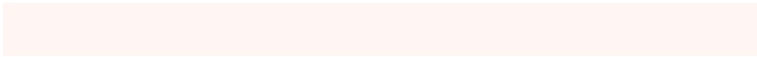
B3BDCF

Sweetspot

The Sweet Spot groups the original color and five complimentary colors.



D0B7B0



FFF5F2



D0B0C9



807A78



000000



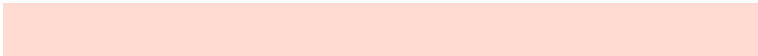
808080

Same Dimension

The Same Dimension uses a secret algorithm to generate beautiful new colors.



D0B7B0



FFDBD1



D0C7B0



69605E



A82500



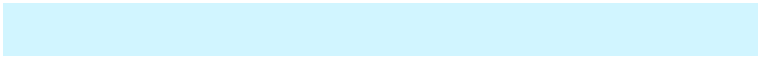
290900

Inverse Universe

The Inverse Universe completely reimagines the original color for something new.



B0C9D0



D1F5FF



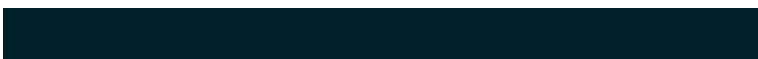
B0B9D0



5E6669



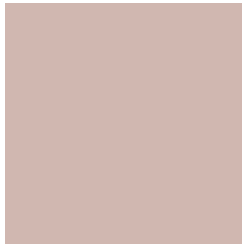
0083A8



002029

Previews

White Background



This preview shows how the Hex color D0B7B0 looks on a white background.

Color Contrast Check

Large Text (above 18pt) WCAG AA × Fail

Any Text WCAG AA × Fail

Large Text (above 18pt) WCAG AAA × Fail

Any Text WCAG AAA × Fail

Black Background



This preview shows how the Hex color D0B7B0 looks on a black background.

Color Contrast Check

Large Text (above 18pt) WCAG AA ✓ Pass

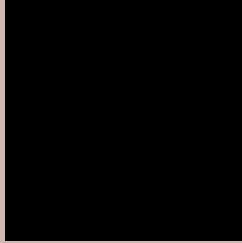
Any Text WCAG AA ✓ Pass

Large Text (above 18pt) WCAG AAA ✓ Pass

Any Text WCAG AAA ✓ Pass

If you want to check with other color combinations, try the [Color Contrast Checker](#).

Hex D0B7B0 Background



This preview shows how black text looks on a background with the Hex color D0B7B0.



This preview shows how white text looks on a background with the Hex color D0B7B0.

Color Blindness Simulation

Color vision deficiency is a very complex topic, and I could not describe the different causes any better than Wikipedia does, so if you want to learn more, you should check out their [article about color blindness](#).

Dichromacy





Tritanopia
D2B4C2

Trichromacy



Original Color
D0B7B0

Protanomaly
C7BAB1

Deuteranomaly
D2B6B0

Tritanomaly
D1B5BB

Monochromacy



Original Color
D0B7B0

Achromatopsia
BEBEBE

Achromatomaly
C5BBB9

CSS Examples

Text

The CSS property to change the color of the text to Hex D0B7B0 is called "color". The color property can be set on classes, ids or directly on the HTML element.

This example shows how text in the color #D0B7B0 looks like.

```
.text, #text, p{  
    color:#D0B7B0  
}
```

If you want to add a text shadow in that color use the text-shadow property, you can generate a text shadow directly with our [CSS Text Shadow Generator](#).

Here you see how black text with a 4 pixel #D0B7B0 colored shadow looks like.

```
.shadow{ text-shadow: 4px 4px 2px #D0B7B0
}
```

Border

The CSS property to change the border of an element to Hex D0B7B0 is called "border". The border property can be set on classes, ids or directly on the HTML element.

This example shows the color as border, it can be applied via the CSS property "border" or "border-color".

```
.border, #border, table{ border:4px solid
#D0B7B0 }
```

If only the border color should be changed use the property `border-color`.

```
.border{ border-color:#D0B7B0 }
```

If you want to add a box shadow in that color use:

Here you see how a box with a 4 pixel #D0B7B0 colored shadow looks like.

```
.boxshadow{ -moz-box-shadow:4px 4px 4px  
4px #D0B7B0; -webkit-box-shadow:4px 4px  
4px 4px #D0B7B0; box-shadow:4px 4px 4px  
4px #D0B7B0 }
```

Background

The CSS property to change the background color of an element to Hex D0B7B0 is called "background". The background property can be set on classes, ids or directly on the HTML element.

```
.background, #background, body{  
background:#D0B7B0 }
```

If only the background color should be changed can be used:

```
.background{ background-color:#D0B7B0 }
```

This example shows the color as background, it is applied via the CSS property "background".

To optimize and compress your CSS code, you can use our [online CSS compressor and optimizer](#) based on csstidy. If you want to create a linear or radial gradient as background or border, check our [CSS Gradient Generator](#).

Hey! You found this booklet interesting? Support Converting Colors with the new Membership Option!

The pro membership hides all ads, plus gives you double the colors in the color bucket, and more awesome pro features!

[Learn more, Memberships starting at \\$2.50/m!](#)

**Follow me
on Twitter!**

@ConvertingColor