

Converting Colors

Hex(D0C0C0)

Have a look what the booklet for
Hex(D0C0C0) contains.

Hex(D0C0C0)	3
<i>Conversions</i>	4
<i>Details</i>	6
<i>Harmonies</i>	11
<i>Previews</i>	23
<i>Color Blindness Simulation</i>	26
<i>CSS Examples</i>	29

Color

Hex(D0C0C0)

Conversions

Conversions Part 1

Format	Color
Hex	D0C0C0
RGB	208, 192, 192
RGB Percent	82%, 75%, 75%
CMY	0.1843, 0.2471, 0.2471
CMYK	0.00, 0.08, 0.08, 0.18
HSL	0°, 15%, 78%
HSV	0°, 8%, 82%
XYZ	54.3765, 54.9149, 57.6029
YIQ	196.7840, 9.5360, 3.3920

Conversions

Conversions Part 2

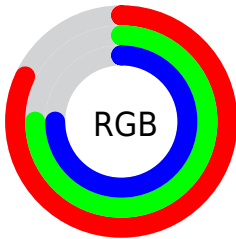
Format	Color
R _Y B	208, 192, 192
Decimal	13680832
CIE Lab	78.99, 5.63, 2.02
CIE LCh	79, 5.980, 19.790
Yxy	54.9149, 0.3258, 0.3290
Android (android.graphics.Color)	4291870912 (0xFFD0C0C0)
YUV	196.7840, -2.3585, 9.8364
Hunter-Lab	74.1046, 1.2967, 5.7860

Details

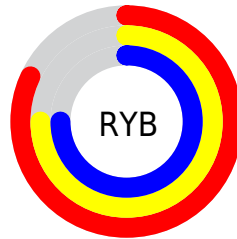
The Hex color **D0C0C0** is a light color, and the websafe version is hex **CCCCCC**. A complement of this color would be **C0D0D0**, and the grayscale version is **C5C5C5**.

A 20% lighter version of the original color is **FFF8F8**, and **9A8B8B** is the 20% darker color. If you saturate the color by 10%, you get **D0ABAB**, and if you desaturate by 10%, it is **D0D5D5**.

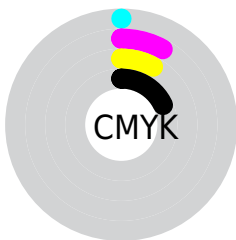
Distribution



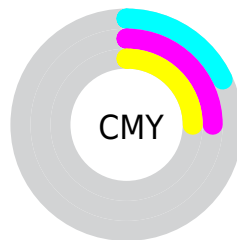
- Red (82%)
- Green (75%)
- Blue (75%)



- Red (82%)
- Yellow (75%)
- Blue (75%)



- Cyan (0%)
- Magenta (8%)
- Yellow (8%)
- Black (18%)



- Cyan (18%)
- Magenta (25%)
- Yellow (25%)

Brightness & Saturation Gradients

These gradients show how the Hex color D0C0C0 changes by changing the brightness by 10 percent. The first figure shows a shift by +10% for each color and the second figure -10%.

Similar to the brightness gradients but the following saturation gradients show a change of the Hex color D0C0C0 by changing the saturation by 10% instead.

 D0C0C0

FFFFFF

 FFF8F8

 D0C0C0

 B4A5A5

 9A8B8B

 807171

 665959

 4E4141

 372B2B

 221717

 030000

 000000

 D0C0C0

 D0C0C0

 D0ABAB

 D0D5D5

 D09696

 D0EAEA

 D08282

 D0FEFE

 D06D6D

 D0FFFF

 D05858

 D04343

 D02E2E

 D01A1A

 D00505

Harmonies

Analogous

The Analogous color harmony consists of three colors that are next to each other on the color wheel.



CEC0C6



D0C0C0



CFC1BB

Triad

The Triadic color harmony groups three colors that are evenly spaced from another and form a triangle on the color wheel.



D0C0C0



BEC6BC



BCC5CE

Complementary

The Complementary color scheme is a pair of colors which are on the opposite of each other on the color wheel.



D0C0C0



C0D0D0

Split Complementary

Split-complementary colors differ from the complementary color scheme. The scheme consists of three colors, the original color and two neighbors of the complement color.



B7C6CC



D0C0C0



B9C7C1

Square

The Square scheme is like the rectangle color scheme, but the four colors are evenly spaced on the color wheel.



D0C0C0



C4C4B9



B6C7C7



C2C3CE

Rectangle

The Rectangle color scheme consists of four colors that form a rectangle on the color wheel.



D0C0C0



CCC2B9



B6C7C7



BAC5CE

Sweetspot

The Sweet Spot groups the original color and five complimentary colors.



D0C0C0



FFFAFA



D0C0D0



807D7D



000000



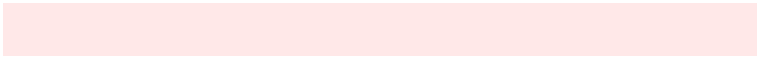
808080

Same Dimension

The Same Dimension uses a secret algorithm to generate beautiful new colors.



D0C0C0



FFE8E8



D0C8C0



695E5E



A80000



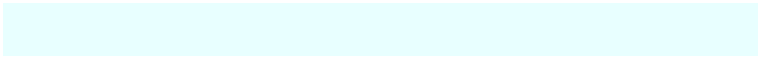
290000

Inverse Universe

The Inverse Universe completely reimagines the original color for something new.



C0D0D0



E8FFFF



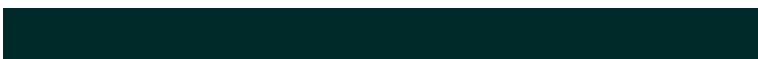
C0C8D0



5E6969



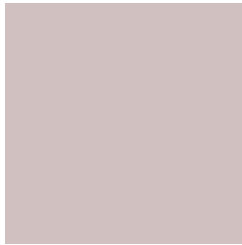
00A8A8



002929

Previews

White Background



This preview shows how the Hex color D0C0C0 looks on a white background.

Color Contrast Check

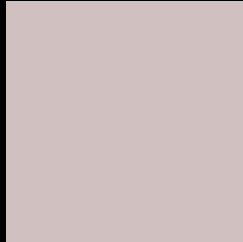
Large Text (above 18pt) WCAG AA × Fail

Any Text WCAG AA × Fail

Large Text (above 18pt) WCAG AAA × Fail

Any Text WCAG AAA × Fail

Black Background



This preview shows how the Hex color D0C0C0 looks on a black background.

Color Contrast Check

Large Text (above 18pt) WCAG AA ✓ Pass

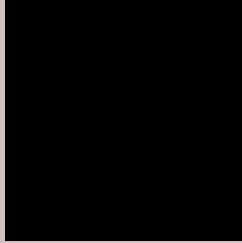
Any Text WCAG AA ✓ Pass

Large Text (above 18pt) WCAG AAA ✓ Pass

Any Text WCAG AAA ✓ Pass

If you want to check with other color combinations, try the [Color Contrast Checker](#).

Hex D0C0C0 Background



This preview shows how black text looks on a background with the Hex color D0C0C0.



This preview shows how white text looks on a background with the Hex color D0C0C0.

Color Blindness Simulation

Color vision deficiency is a very complex topic, and I could not describe the different causes any better than Wikipedia does, so if you want to learn more, you should check out their [article about color blindness](#).

Dichromacy



Original Color
D0C0C0

Protanopia
C7C3C2

Deuteranopia
D8BDC1



Tritanopia
D2BECD

Trichromacy



Original Color
D0C0C0

Protanomaly
CAC2C1

Deuteranomaly
D5BEC1

Tritanomaly
D1BFC8

Monochromacy



Original Color
D0C0C0

Achromatopsia
C5C5C5

Achromatomaly
C9C3C3

CSS Examples

Text

The CSS property to change the color of the text to Hex D0C0C0 is called "color". The color property can be set on classes, ids or directly on the HTML element.

This example shows how text in the color #D0C0C0 looks like.

```
.text, #text, p{  
    color:#D0C0C0  
}
```

If you want to add a text shadow in that color use the text-shadow property, you can generate a text shadow directly with our [CSS Text Shadow Generator](#).

Here you see how black text with a 4 pixel #D0C0C0 colored shadow looks like.

```
.shadow{ text-shadow: 4px 4px 2px #D0C0C0
}
```

Border

The CSS property to change the border of an element to Hex D0C0C0 is called "border". The border property can be set on classes, ids or directly on the HTML element.

This example shows the color as border, it can be applied via the CSS property "border" or "border-color".

```
.border, #border, table{ border:4px solid
#D0C0C0 }
```

If only the border color should be changed use the property `border-color`.

```
.border{ border-color:#D0C0C0 }
```

If you want to add a box shadow in that color use:

Here you see how a box with a 4 pixel #D0C0C0 colored shadow looks like.

```
.boxshadow{ -moz-box-shadow:4px 4px 4px  
4px #D0C0C0; -webkit-box-shadow:4px 4px  
4px 4px #D0C0C0; box-shadow:4px 4px 4px  
4px #D0C0C0 }
```

Background

The CSS property to change the background color of an element to Hex D0C0C0 is called "background". The background property can be set on classes, ids or directly on the HTML element.

```
.background, #background, body{  
background:#D0C0C0 }
```

If only the background color should be changed can be used:

```
.background{ background-color:#D0C0C0 }
```

This example shows the color as background, it is applied via the CSS property "background".

To optimize and compress your CSS code, you can use our [online CSS compressor and optimizer](#) based on csstidy. If you want to create a linear or radial gradient as background or border, check our [CSS Gradient Generator](#).

Hey! You found this booklet interesting? Support Converting Colors with the new Membership Option!

The pro membership hides all ads, plus gives you double the colors in the color bucket, and more awesome pro features!

[Learn more, Memberships starting at \\$2.50/m!](#)

**Follow me
on Twitter!**

@ConvertingColor