

Converting Colors

Hex(D0C3C5)

Have a look what the booklet for
Hex(D0C3C5) contains.

Hex(D0C3C5)	3
<i>Conversions</i>	4
<i>Details</i>	6
<i>Harmonies</i>	11
<i>Previews</i>	23
<i>Color Blindness Simulation</i>	26
<i>CSS Examples</i>	29

Color

Hex(D0C3C5)

Conversions

Conversions Part 1

Format	Color
Hex	D0C3C5
RGB	208, 195, 197
RGB Percent	82%, 76%, 77%
CMY	0.1843, 0.2353, 0.2275
CMYK	0.00, 0.06, 0.05, 0.18
HSL	351°, 12%, 79%
HSV	351°, 6%, 82%
XYZ	55.6056, 56.4713, 60.7927
YIQ	199.1150, 7.1060, 3.3780

Conversions

Conversions Part 2

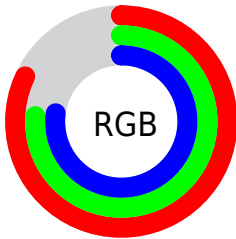
Format	Color
R_{YB}	208, 195, 197
Decimal	13681605
CIE _{Lab}	79.88, 4.90, 0.63
CIE _{LCh}	80, 4.938, 7.274
Y _{xy}	56.4713, 0.3217, 0.3267
Android (android.graphics.Color)	4291871685 (0xFFD0C3C5)
Y _{UV}	199.1150, -1.0427, 7.7921
Hunter-Lab	75.1474, 0.5737, 4.6388

Details

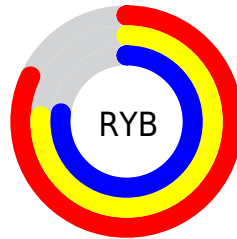
The Hex color **D0C3C5** is a light color, and the websafe version is hex **CCCCCC**. A complement of this color would be **C3D0CE**, and the grayscale version is **C7C7C7**.

A 20% lighter version of the original color is **FFFCFE**, and **9A8D8F** is the 20% darker color. If you saturate the color by 10%, you get **D0AEB3**, and if you desaturate by 10%, it is **D0D8D7**.

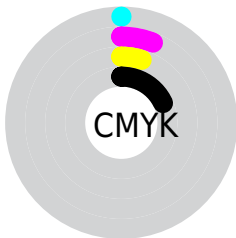
Distribution



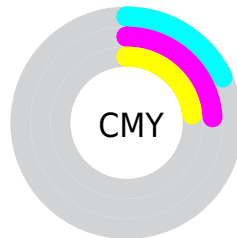
- Red (82%)
- Green (76%)
- Blue (77%)



- Red (82%)
- Yellow (76%)
- Blue (77%)



- Cyan (0%)
- Magenta (6%)
- Yellow (5%)
- Black (18%)



- Cyan (18%)
- Magenta (24%)
- Yellow (23%)

Brightness & Saturation Gradients

These gradients show how the Hex color D0C3C5 changes by changing the brightness by 10 percent. The first figure shows a shift by +10% for each color and the second figure -10%.

Similar to the brightness gradients but the following saturation gradients show a change of the Hex color D0C3C5 by changing the saturation by 10% instead.

 D0C3C5

FFFFFF

 FFFCFE

 D0C3C5

 B4A8AA

 9A8D8F

 807476

 675B5D

 4F4446

 382E2F

 22191B

 0B0000

 000000

 D0C3C5

 D0C3C5

 D0AEB3

 D0D8D7

 D099A2

 D0EDE8

 D08590

 D0FFFA

 D0707F

 D0FFFF

 D05B6D

 D0465B

 D0314A

 D01D38

 D00827

Harmonies

Analogous

The Analogous color harmony consists of three colors that are next to each other on the color wheel.



CDC3CA



D0C3C5



D0C3C1

Triad

The Triadic color harmony groups three colors that are evenly spaced from another and form a triangle on the color wheel.



D0C3C5



C3C7BF



BEC7CE

Complementary

The Complementary color scheme is a pair of colors which are on the opposite of each other on the color wheel.



D0C3C5



C3D0CE

Split Complementary

Split-complementary colors differ from the complementary color scheme. The scheme consists of three colors, the original color and two neighbors of the complement color.



BBC9CB



D0C3C5



BFC9C2

Square

The Square scheme is like the rectangle color scheme, but the four colors are evenly spaced on the color wheel.



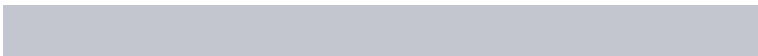
D0C3C5



C9C6BD



BCC9C7



C3C6CF

Rectangle

The Rectangle color scheme consists of four colors that form a rectangle on the color wheel.



D0C3C5



CFC4BE



BCC9C7



BDC8CE

Sweetspot

The Sweet Spot groups the original color and five complimentary colors.



D0C3C5



FFFAFB



CEC3D0



807D7D



000000



808080

Same Dimension

The Same Dimension uses a secret algorithm to generate beautiful new colors.



D0C3C5



FFE8EE



D0C7C3



695E60



A8001A



290006

Inverse Universe

The Inverse Universe completely reimagines the original color for something new.



D0C3C5



FFE8EE



C3CCD0



695E60



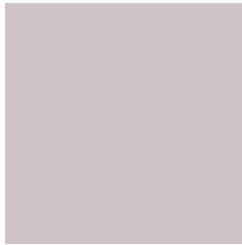
A8001A



290006

Previews

White Background



This preview shows how the Hex color D0C3C5 looks on a white background.

Color Contrast Check

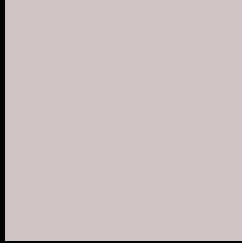
Large Text (above 18pt) WCAG AA × Fail

Any Text WCAG AA × Fail

Large Text (above 18pt) WCAG AAA × Fail

Any Text WCAG AAA × Fail

Black Background



This preview shows how the Hex color D0C3C5 looks on a black background.

Color Contrast Check

Large Text (above 18pt) WCAG AA ✓ Pass

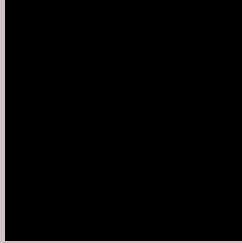
Any Text WCAG AA ✓ Pass

Large Text (above 18pt) WCAG AAA ✓ Pass

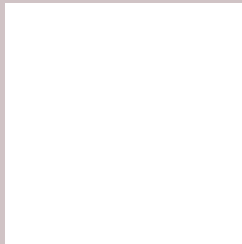
Any Text WCAG AAA ✓ Pass

If you want to check with other color combinations, try the [Color Contrast Checker](#).

Hex D0C3C5 Background



This preview shows how black text looks on a background with the Hex color D0C3C5.

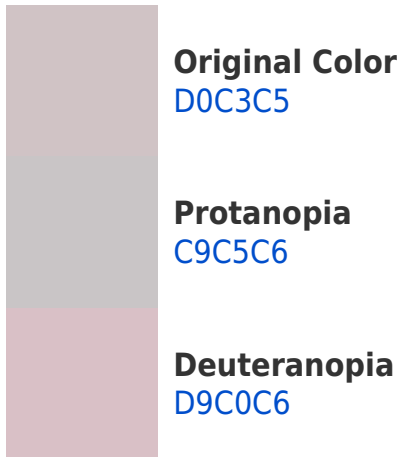


This preview shows how white text looks on a background with the Hex color D0C3C5.

Color Blindness Simulation

Color vision deficiency is a very complex topic, and I could not describe the different causes any better than Wikipedia does, so if you want to learn more, you should check out their [article about color blindness](#).

Dichromacy





Tritanopia
D2C1D0

Trichromacy



Original Color
D0C3C5

Protanomaly
CCC4C6

Deuteranomaly
D6C1C6

Tritanomaly
D1C2CC

Monochromacy



Original Color
D0C3C5

Achromatopsia
C7C7C7

Achromatomaly
CAC6C6

CSS Examples

Text

The CSS property to change the color of the text to Hex D0C3C5 is called "color". The color property can be set on classes, ids or directly on the HTML element.

This example shows how text in the color #D0C3C5 looks like.

```
.text, #text, p{  
    color:#D0C3C5  
}
```

If you want to add a text shadow in that color use the text-shadow property, you can generate a text shadow directly with our [CSS Text Shadow Generator](#).

Here you see how black text with a 4 pixel #D0C3C5 colored shadow looks like.

```
.shadow{ text-shadow: 4px 4px 2px #D0C3C5
}
```

Border

The CSS property to change the border of an element to Hex D0C3C5 is called "border". The border property can be set on classes, ids or directly on the HTML element.

This example shows the color as border, it can be applied via the CSS property "border" or "border-color".

```
.border, #border, table{ border:4px solid
#D0C3C5 }
```

If only the border color should be changed use the property `border-color`.

```
.border{ border-color:#D0C3C5 }
```

If you want to add a box shadow in that color use:

Here you see how a box with a 4 pixel #D0C3C5 colored shadow looks like.

```
.boxshadow{ -moz-box-shadow:4px 4px 4px  
4px #D0C3C5; -webkit-box-shadow:4px 4px  
4px 4px #D0C3C5; box-shadow:4px 4px 4px  
4px #D0C3C5 }
```

Background

The CSS property to change the background color of an element to Hex D0C3C5 is called "background". The background property can be set on classes, ids or directly on the HTML element.

```
.background, #background, body{  
background:#D0C3C5 }
```

If only the background color should be changed can be used:

```
.background{ background-color:#D0C3C5 }
```

This example shows the color as background, it is applied via the CSS property "background".

To optimize and compress your CSS code, you can use our [online CSS compressor and optimizer](#) based on csstidy. If you want to create a linear or radial gradient as background or border, check our [CSS Gradient Generator](#).

Hey! You found this booklet interesting? Support Converting Colors with the new Membership Option!

The pro membership hides all ads, plus gives you double the colors in the color bucket, and more awesome pro features!

[Learn more, Memberships starting at \\$2.50/m!](#)

**Follow me
on Twitter!**

@ConvertingColor