

# Converting Colors

Hex(D14B80)

Have a look what the booklet for  
Hex(D14B80) contains.

<b>Hex(D14B80)</b> .....	3
<i><b>Conversions</b></i> .....	4
<i><b>Details</b></i> .....	6
<i><b>Harmonies</b></i> .....	11
<i><b>Previews</b></i> .....	23
<i><b>Color Blindness Simulation</b></i> .....	26
<i><b>CSS Examples</b></i> .....	29

**Color**

**Hex(D14B80)**

# Conversions

## Conversions Part 1

<b>Format</b>	<b>Color</b>
Hex	D14B80
RGB	209, 75, 128
RGB Percent	82%, 29%, 50%
CMY	0.1804, 0.7059, 0.4980
CMYK	0.00, 0.64, 0.39, 0.18
HSL	336°, 59%, 56%
HSV	336°, 64%, 82%
XYZ	32.7069, 20.1460, 22.5868
YIQ	121.1080, 62.8510, 44.8910

# Conversions

## Conversions Part 2

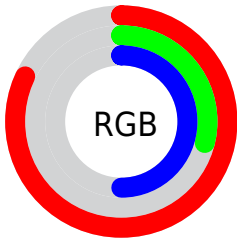
<b>Format</b>	<b>Color</b>
<b>R<sub>YB</sub></b>	209, 75, 128
Decimal	13716352
CIE <sub>Lab</sub>	52.00, 57.27, -1.15
CIE <sub>LCh</sub>	52, 57.278, 358.851
Yxy	20.1460, 0.4336, 0.2670
Android (android.graphics.Color)	4291906432 (0xFFD14B80)
YUV	121.1080, 3.3978, 77.0813
Hunter-Lab	44.8843, 51.5242, 1.5829

# Details

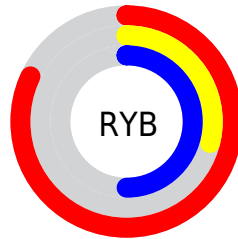
The Hex color **D14B80** is a dark color, and the websafe version is hex **CC3366**. The color can be described as middle muted rose. A complement of this color would be **4BD19C**, and the grayscale version is **797979**.

A 20% lighter version of the original color is **FF83B5**, and **96014F** is the 20% darker color. If you saturate the color by 10%, you get **D13673**, and if you desaturate by 10%, it is **D1608D**.

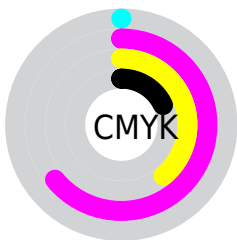
# Distribution



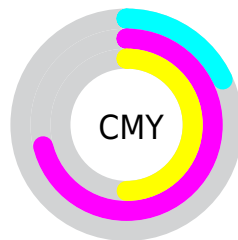
- Red (82%)
- Green (29%)
- Blue (50%)



- Red (82%)
- Yellow (29%)
- Blue (50%)



- Cyan (0%)
- Magenta (64%)
- Yellow (39%)
- Black (18%)



- Cyan (18%)
- Magenta (71%)
- Yellow (50%)

# Brightness & Saturation Gradients

These gradients show how the Hex color D14B80 changes by changing the brightness by 10 percent. The first figure shows a shift by +10% for each color and the second figure -10%.

Similar to the brightness gradients but the following saturation gradients show a change of the Hex color D14B80 by changing the saturation by 10% instead.



 D14B80

 D14B80

FFFFFF

 B32D67

 FF83B5

 96014F

 FF9FD0

 790038

 FFBBEC

 5D0023

 FFD8FF

 43000D

 FFF6FF

 240001

 000000

 D14B80

 D14B80

 D13673

 D1608D

 D12167

 D17599

 D10C5A

 D18AA6

 D10053

 D19FB3

 D1B4BF

 D1C8CC

 D1DDD8

 D1F2E5

 D1FFF2

# Harmonies

## Analogous

The Analogous color harmony consists of three colors that are next to each other on the color wheel.



B559B0



D14B80



D15250

# Triad

The Triadic color harmony groups three colors that are evenly spaced from another and form a triangle on the color wheel.



D14B80



65871A



008ED0

# Complementary

The Complementary color scheme is a pair of colors which are on the opposite of each other on the color wheel.



D14B80



4BD19C

# Split Complementary

Split-complementary colors differ from the complementary color scheme. The scheme consists of three colors, the original color and two neighbors of the complement color.



0092AA



D14B80



0A8F46

# Square

The Square scheme is like the rectangle color scheme, but the four colors are evenly spaced on the color wheel.



D14B80



967902



009379



0082DE

# Rectangle

The Rectangle color scheme consists of four colors that form a rectangle on the color wheel.



D14B80



C45F33



009379



0090C5



# Sweetspot

The Sweet Spot groups the original color and five complimentary colors.



D14B80



FFCFE2



9B4BD1



80626E



000000



808080



# Same Dimension

The Same Dimension uses a secret algorithm to generate beautiful new colors.



D14B80



FF3B88



D1584B



695E62



A80043



290010



# Inverse Universe

The Inverse Universe completely reimagines the original color for something new.



D14B80



FF3B88



4BC4D1



695E62



A80043



290010



# Previews

## White Background



This preview shows how the Hex color D14B80 looks on a white background.

## Color Contrast Check

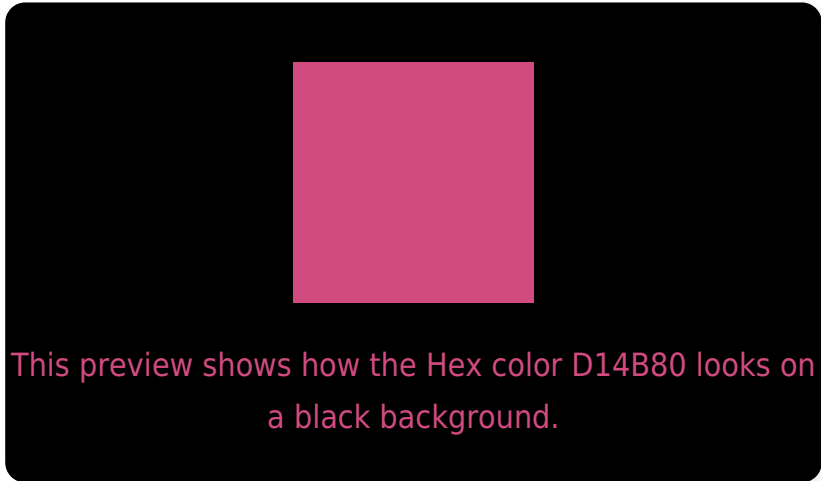
Large Text (above 18pt) WCAG AA ✓ Pass

Any Text WCAG AA × Fail

Large Text (above 18pt) WCAG AAA × Fail

Any Text WCAG AAA × Fail

# Black Background



## Color Contrast Check

Large Text (above 18pt) WCAG AA ✓ Pass

Any Text WCAG AA ✓ Pass

Large Text (above 18pt) WCAG AAA ✓ Pass

Any Text WCAG AAA × Fail

If you want to check with other color combinations, try the [Color Contrast Checker](#).



## Hex D14B80 Background



This preview shows how black text looks on a background with the Hex color D14B80.



This preview shows how white text looks on a background with the Hex color D14B80.

# Color Blindness Simulation

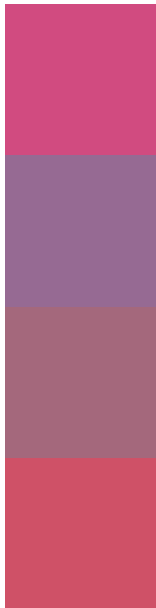
Color vision deficiency is a very complex topic, and I could not describe the different causes any better than Wikipedia does, so if you want to learn more, you should check out their [article about color blindness](#).

## Dichromacy





# Trichromacy



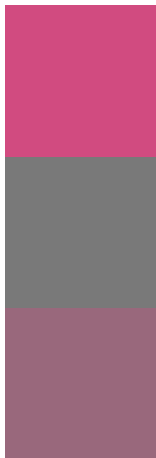
**Original Color**  
D14B80

**Protanomaly**  
966A93

**Deuteranomaly**  
A4687C

**Tritanomaly**  
CF5167

# Monochromacy



**Original Color**  
D14B80

**Achromatopsia**  
797979

**Achromatomaly**  
99687C

# CSS Examples

## Text

The CSS property to change the color of the text to Hex D14B80 is called "color". The color property can be set on classes, ids or directly on the HTML element.

This example shows how text in the color #D14B80 looks like.

```
.text, #text, p{  
    color:#D14B80  
}
```

If you want to add a text shadow in that color use the text-shadow property, you can generate a text shadow directly with our [CSS Text Shadow Generator](#).

Here you see how black text with a 4 pixel #D14B80 colored shadow looks like.

```
.shadow{ text-shadow: 4px 4px 2px #D14B80
}
```

## Border

The CSS property to change the border of an element to Hex D14B80 is called "border". The border property can be set on classes, ids or directly on the HTML element.

This example shows the color as border, it can be applied via the CSS property "border" or "border-color".

```
.border, #border, table{ border:4px solid
#D14B80 }
```

If only the border color should be changed use the property `border-color`.

```
.border{ border-color:#D14B80 }
```

If you want to add a box shadow in that color use:

Here you see how a box with a 4 pixel #D14B80 colored shadow looks like.

```
.boxshadow{ -moz-box-shadow:4px 4px 4px  
4px #D14B80; -webkit-box-shadow:4px 4px  
4px 4px #D14B80; box-shadow:4px 4px 4px  
4px #D14B80 }
```

# Background

The CSS property to change the background color of an element to Hex D14B80 is called "background". The background property can be set on classes, ids or directly on the HTML element.

```
.background, #background, body{  
background:#D14B80 }
```

If only the background color should be changed can be used:

```
.background{ background-color:#D14B80 }
```

This example shows the color as background, it is applied via the CSS property "background".

To optimize and compress your CSS code, you can use our [online CSS compressor and optimizer](#) based on csstidy. If you want to create a linear or radial gradient as background or border, check our [CSS Gradient Generator](#).



Hey! You found this booklet interesting? Support Converting Colors with the new Membership Option!

The pro membership hides all ads, plus gives you double the colors in the color bucket, and more awesome pro features!

**[Learn more, Memberships starting at \\$2.50/m!](#)**

**Follow me  
on Twitter!**

@ConvertingColor