

# Converting Colors

Hex(D19092)

Have a look what the booklet for  
Hex(D19092) contains.

<b>Hex(D19092)</b> .....	3
<i><b>Conversions</b></i> .....	4
<i><b>Details</b></i> .....	6
<i><b>Harmonies</b></i> .....	11
<i><b>Previews</b></i> .....	23
<i><b>Color Blindness Simulation</b></i> .....	26
<i><b>CSS Examples</b></i> .....	29

# **Color**

**Hex(D19092)**

# Conversions

## Conversions Part 1

Format	Color
Hex	D19092
RGB	209, 144, 146
RGB Percent	82%, 56%, 57%
CMY	0.1804, 0.4353, 0.4275
CMYK	0.00, 0.31, 0.30, 0.18
HSL	358°, 41%, 69%
HSV	358°, 31%, 82%
XYZ	41.4561, 35.5772, 31.8762
YIQ	163.6630, 38.0980, 14.4020

# Conversions

## Conversions Part 2

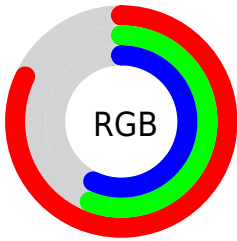
<b>Format</b>	<b>Color</b>
<a href="#">RYB</a>	<a href="#">209, 144, 146</a>
Decimal	<a href="#">13734034</a>
CIELab	<a href="#">66.20, 24.90, 8.92</a>
CIELCh	<a href="#">66, 26.444, 19.705</a>
Yxy	<a href="#">35.5772, 0.3806, 0.3267</a>
Android (android.graphics.Color)	<a href="#">4291924114 (0xFFD19092)</a>
YUV	<a href="#">163.6630, -8.7079, 39.7605</a>
Hunter-Lab	<a href="#">59.6466, 19.6810, 10.0669</a>

# Details

The Hex color **D19092** is a light color, and the websafe version is hex **CC9999**. A complement of this color would be **90D1CF**, and the grayscale version is **A4A4A4**.

A 20% lighter version of the original color is **FFC6C8**, and **995D60** is the 20% darker color. If you saturate the color by 10%, you get **D17B7E**, and if you desaturate by 10%, it is **D1A5A6**.

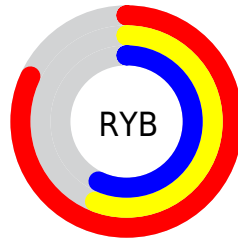
# Distribution



Red (82%)

Green (56%)

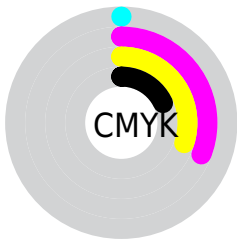
Blue (57%)



Red (82%)

Yellow (56%)

Blue (57%)

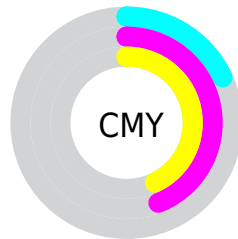


Cyan (0%)

Magenta (31%)

Yellow (30%)

Black (18%)



Cyan (18%)

Magenta (44%)

Yellow (43%)

# Brightness & Saturation Gradients

These gradients show how the Hex color D19092 changes by changing the brightness by 10 percent. The first figure shows a shift by +10% for each color and the second figure -10%.

Similar to the brightness gradients but the following saturation gradients show a change of the Hex color D19092 by changing the saturation by 10% instead.



 D19092

 D19092

FFFFFF

 B57678

 FFC6C8

 995D60

 FFE2E4

 7E4548

 642D32

 4A171D

 320002

 130000

 000000

 D19092

 D19092

 D17B7E

 D1A5A6

 D16669

 D1BABB

 D15155

 D1CFCF

 D13C41

 D1E4E3

 D1272D

 D1F9F7

 D11318

 D1FFFF

 D10006

# Harmonies

## Analogous

The Analogous color harmony consists of three colors that are next to each other on the color wheel.



CB90AA



D19092



CA957E

# Triad

The Triadic color harmony groups three colors that are evenly spaced from another and form a triangle on the color wheel.



D19092



87AA82



77A6CF

# Complementary

The Complementary color scheme is a pair of colors which are on the opposite of each other on the color wheel.



D19092



90D1CF

# Split Complementary

Split-complementary colors differ from the complementary color scheme. The scheme consists of three colors, the original color and two neighbors of the complement color.



5DABC4



D19092



6CAE98

# Square

The Square scheme is like the rectangle color scheme, but the four colors are evenly spaced on the color wheel.



D19092



A2A474



5AAEB0



999ECD

# Rectangle

The Rectangle color scheme consists of four colors that form a rectangle on the color wheel.



D19092



C09A75



5AAEB0



6DA8CD

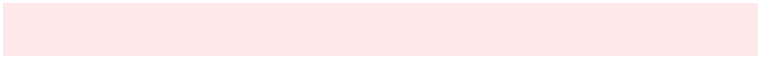


# Sweetspot

The Sweet Spot groups the original color and five complimentary colors.



D19092



FFE8E9



CF90D1



807172



000000



808080



# Same Dimension

The Same Dimension uses a secret algorithm to generate beautiful new colors.



D19092



FFA1A4



D1AE90



695E5E



A80005



290001



# Inverse Universe

The Inverse Universe completely reimagines the original color for something new.



D19092



FFA1A4



90B3D1



695E5E



A80005

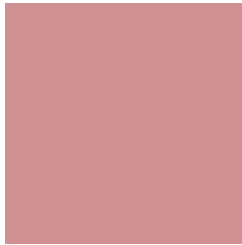


290001



# Previews

## White Background



This preview shows how the Hex color D19092 looks on a white background.

## Color Contrast Check

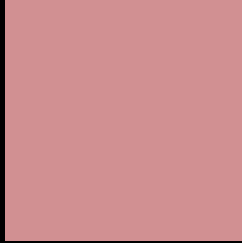
Large Text (above 18pt) WCAG AA × Fail

Any Text WCAG AA × Fail

Large Text (above 18pt) WCAG AAA × Fail

Any Text WCAG AAA × Fail

# Black Background



This preview shows how the Hex color D19092 looks on a black background.

## Color Contrast Check

Large Text (above 18pt) WCAG AA ✓ Pass

Any Text WCAG AA ✓ Pass

Large Text (above 18pt) WCAG AAA ✓ Pass

Any Text WCAG AAA ✓ Pass

If you want to check with other color combinations, try the [Color Contrast Checker](#).



## Hex D19092 Background



This preview shows how black text looks on a background with the Hex color D19092.

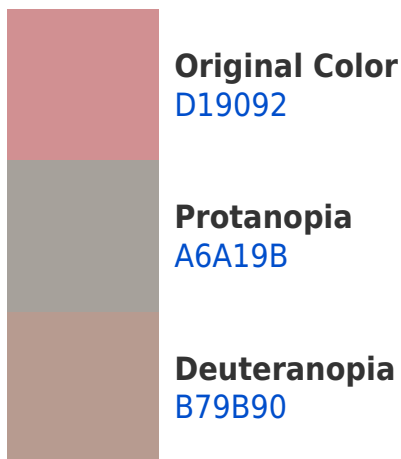


This preview shows how white text looks on a background with the Hex color D19092.

# Color Blindness Simulation

Color vision deficiency is a very complex topic, and I could not describe the different causes any better than Wikipedia does, so if you want to learn more, you should check out their [article about color blindness](#).

## Dichromacy





**Tritanopia**  
D28F9A

# Trichromacy



**Original Color**  
D19092

**Protanomaly**  
B69B98

**Deuteranomaly**  
C09791

**Tritanomaly**  
D28F97

# Monochromacy



**Original Color**  
D19092

**Achromatopsia**  
A4A4A4

**Achromatomaly**  
B49D9D

# CSS Examples

## Text

The CSS property to change the color of the text to Hex D19092 is called "color". The color property can be set on classes, ids or directly on the HTML element.

This example shows how text in the color #D19092 looks like.

```
.text, #text, p{  
    color:#D19092  
}
```

If you want to add a text shadow in that color use the text-shadow property, you can generate a text shadow directly with our [CSS Text Shadow Generator](#).

Here you see how black text with a 4 pixel #D19092 colored shadow looks like.

```
.shadow{ text-shadow: 4px 4px 2px #D19092
}
```

## Border

The CSS property to change the border of an element to Hex D19092 is called "border". The border property can be set on classes, ids or directly on the HTML element.

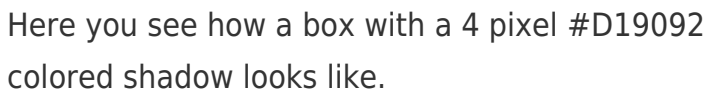
This example shows the color as border, it can be applied via the CSS property "border" or "border-color".

```
.border, #border, table{ border:4px solid
#D19092 }
```

If only the border color should be changed use the property `border-color`.

```
.border{ border-color:#D19092 }
```

If you want to add a box shadow in that color use:



Here you see how a box with a 4 pixel #D19092 colored shadow looks like.

```
.boxshadow{ -moz-box-shadow:4px 4px 4px  
4px #D19092; -webkit-box-shadow:4px 4px  
4px 4px #D19092; box-shadow:4px 4px 4px  
4px #D19092 }
```

# Background

The CSS property to change the background color of an element to Hex D19092 is called "background". The background property can be set on classes, ids or directly on the HTML element.

```
.background, #background, body{  
background:#D19092 }
```

If only the background color should be changed can be used:

```
.background{ background-color:#D19092 }
```

This example shows the color as background, it is applied via the CSS property "background".

To optimize and compress your CSS code, you can use our [online CSS compressor and optimizer](#) based on csstidy. If you want to create a linear or radial gradient as background or border, check our [CSS Gradient Generator](#).



Hey! You found this booklet interesting? Support Converting Colors with the new Membership Option!

The pro membership hides all ads, plus gives you double the colors in the color bucket, and more awesome pro features!

**[Learn more, Memberships starting at \\$2.50/m!](#)**

**Follow me  
on Twitter!**

@ConvertingColor