

Converting Colors

Hex(D19998)

Have a look what the booklet for
Hex(D19998) contains.

Hex(D19998)	3
<i>Conversions</i>	4
<i>Details</i>	6
<i>Harmonies</i>	11
<i>Previews</i>	23
<i>Color Blindness Simulation</i>	26
<i>CSS Examples</i>	29

Color

Hex(D19998)

Conversions

Conversions Part 1

Format	Color
Hex	D19998
RGB	209, 153, 152
RGB Percent	82%, 60%, 60%
CMY	0.1804, 0.4000, 0.4039
CMYK	0.00, 0.27, 0.27, 0.18
HSL	1°, 38%, 71%
HSV	1°, 27%, 82%
XYZ	43.3532, 38.6048, 34.8723
YIQ	169.6300, 33.6970, 11.5610

Conversions

Conversions Part 2

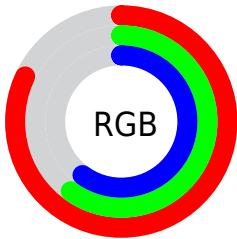
Format	Color
R _Y B	209, 153, 152
Decimal	13736344
CIE Lab	68.46, 20.82, 8.79
CIE LCh	68, 22.596, 22.894
Yxy	38.6048, 0.3711, 0.3304
Android (android.graphics.Color)	4291926424 (0xFFD19998)
YUV	169.6300, -8.6916, 34.5275
Hunter-Lab	62.1327, 15.8164, 10.2162

Details

The Hex color **D19998** is a light color, and the websafe version is hex **CC9999**. A complement of this color would be **98D0D1**, and the grayscale version is **AAAAAA**.

A 20% lighter version of the original color is **FFD0CE**, and **996665** is the 20% darker color. If you saturate the color by 10%, you get **D18483**, and if you desaturate by 10%, it is **D1AEAD**.

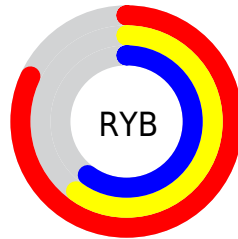
Distribution



Red (82%)

Green (60%)

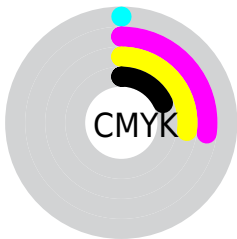
Blue (60%)



Red (82%)

Yellow (60%)

Blue (60%)

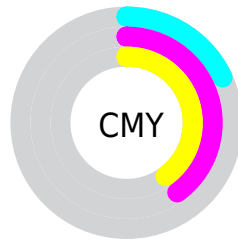


Cyan (0%)

Magenta (27%)

Yellow (27%)

Black (18%)



Cyan (18%)

Magenta (40%)

Yellow (40%)

Brightness & Saturation Gradients

These gradients show how the Hex color D19998 changes by changing the brightness by 10 percent. The first figure shows a shift by +10% for each color and the second figure -10%.

Similar to the brightness gradients but the following saturation gradients show a change of the Hex color D19998 by changing the saturation by 10% instead.

 D19998

 D19998

FFFFFF

 B57F7E

 FFD0CE

 996665

 FFECEA

 7E4D4D

 643637

 4B2021

 330A0B

 1B0001

 000000

 D19998

 D19998

 D18483

 D1AEAD

 D1706E

 D1C2C2

 D15B59

 D1D7D7

 D14744

 D1EBEC

 D13230

 D1FFFF

 D11E1B

 D10906

 D10400

Harmonies

Analogous

The Analogous color harmony consists of three colors that are next to each other on the color wheel.



CD99AD



D19998



CA9D87

Triad

The Triadic color harmony groups three colors that are evenly spaced from another and form a triangle on the color wheel.



D19998



8EB08E



88AACF

Complementary

The Complementary color scheme is a pair of colors which are on the opposite of each other on the color wheel.



D19998



98D0D1

Split Complementary

Split-complementary colors differ from the complementary color scheme. The scheme consists of three colors, the original color and two neighbors of the complement color.



72B0C7



D19998



79B2A1

Square

The Square scheme is like the rectangle color scheme, but the four colors are evenly spaced on the color wheel.



D19998



A6AB81



6DB2B6



A4A3CC

Rectangle

The Rectangle color scheme consists of four colors that form a rectangle on the color wheel.



D19998



C1A280



6DB2B6



80ACCD

Sweetspot

The Sweet Spot groups the original color and five complimentary colors.



D19998



FFEBE8



D198D0



807373



000000



808080

Same Dimension

The Same Dimension uses a secret algorithm to generate beautiful new colors.



D19998



FFACAB



D1B598



695E5E



A80300



290100

Inverse Universe

The Inverse Universe completely reimagines the original color for something new.



98D0D1



ABFEFF



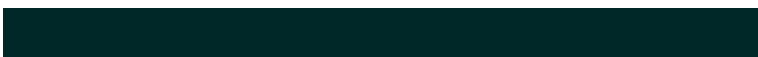
98B4D1



5E6869



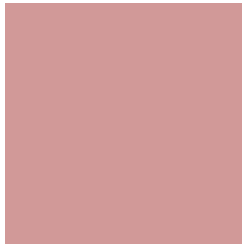
00A5A8



002829

Previews

White Background



This preview shows how the Hex color D19998 looks on a white background.

Color Contrast Check

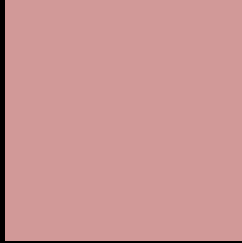
Large Text (above 18pt) WCAG AA × Fail

Any Text WCAG AA × Fail

Large Text (above 18pt) WCAG AAA × Fail

Any Text WCAG AAA × Fail

Black Background



This preview shows how the Hex color D19998 looks on a black background.

Color Contrast Check

Large Text (above 18pt) WCAG AA ✓ Pass

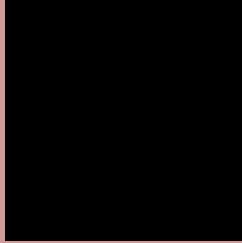
Any Text WCAG AA ✓ Pass

Large Text (above 18pt) WCAG AAA ✓ Pass

Any Text WCAG AAA ✓ Pass

If you want to check with other color combinations, try the [Color Contrast Checker](#).

Hex D19998 Background



This preview shows how black text looks on a background with the Hex color D19998.

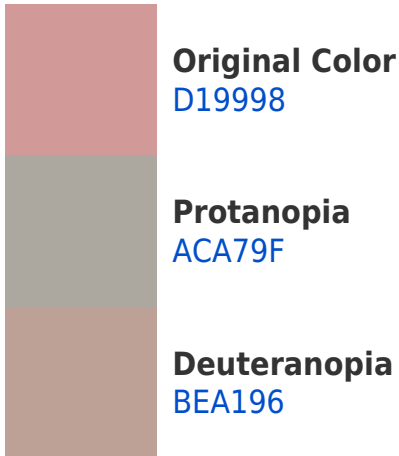


This preview shows how white text looks on a background with the Hex color D19998.

Color Blindness Simulation

Color vision deficiency is a very complex topic, and I could not describe the different causes any better than Wikipedia does, so if you want to learn more, you should check out their [article about color blindness](#).

Dichromacy





Tritanopia
D297A3

Trichromacy



Original Color
D19998

Protanomaly
B9A29C

Deuteranomaly
C59E97

Tritanomaly
D2989F

Monochromacy



Original Color
D19998

Achromatopsia
AAAAAA

Achromatomaly
B8A4A3

CSS Examples

Text

The CSS property to change the color of the text to Hex D19998 is called "color". The color property can be set on classes, ids or directly on the HTML element.

This example shows how text in the color #D19998 looks like.

```
.text, #text, p{  
    color:#D19998  
}
```

If you want to add a text shadow in that color use the text-shadow property, you can generate a text shadow directly with our [CSS Text Shadow Generator](#).

Here you see how black text with a 4 pixel #D19998 colored shadow looks like.

```
.shadow{ text-shadow: 4px 4px 2px #D19998  
}
```

Border

The CSS property to change the border of an element to Hex D19998 is called "border". The border property can be set on classes, ids or directly on the HTML element.

This example shows the color as border, it can be applied via the CSS property "border" or "border-color".

```
.border, #border, table{ border:4px solid  
#D19998 }
```

If only the border color should be changed use the property `border-color`.

```
.border{ border-color:#D19998 }
```

If you want to add a box shadow in that color use:

Here you see how a box with a 4 pixel #D19998 colored shadow looks like.

```
.boxshadow{ -moz-box-shadow:4px 4px 4px  
4px #D19998; -webkit-box-shadow:4px 4px  
4px 4px #D19998; box-shadow:4px 4px 4px  
4px #D19998 }
```

Background

The CSS property to change the background color of an element to Hex D19998 is called "background". The background property can be set on classes, ids or directly on the HTML element.

```
.background, #background, body{  
background:#D19998 }
```

If only the background color should be changed can be used:

```
.background{ background-color:#D19998 }
```

This example shows the color as background, it is applied via the CSS property "background".

To optimize and compress your CSS code, you can use our [online CSS compressor and optimizer](#) based on csstidy. If you want to create a linear or radial gradient as background or border, check our [CSS Gradient Generator](#).

Hey! You found this booklet interesting? Support Converting Colors with the new Membership Option!

The pro membership hides all ads, plus gives you double the colors in the color bucket, and more awesome pro features!

[Learn more, Memberships starting at \\$2.50/m!](#)

**Follow me
on Twitter!**

@ConvertingColor