

Converting Colors

Hex(D1A099)

Have a look what the booklet for
Hex(D1A099) contains.

Hex(D1A099)	3
<i>Conversions</i>	4
<i>Details</i>	6
<i>Harmonies</i>	11
<i>Previews</i>	23
<i>Color Blindness Simulation</i>	26
<i>CSS Examples</i>	29

Color

Hex(D1A099)

Conversions

Conversions Part 1

Format	Color
Hex	D1A099
RGB	209, 160, 153
RGB Percent	82%, 63%, 60%
CMY	0.1804, 0.3725, 0.4000
CMYK	0.00, 0.23, 0.27, 0.18
HSL	8°, 38%, 71%
HSV	8°, 27%, 82%
XYZ	44.6151, 40.9968, 35.6987
YIQ	173.8530, 31.4510, 8.2110

Conversions

Conversions Part 2

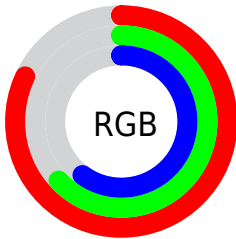
Format	Color
R _Y B	209, 161, 153
Decimal	13738137
CIE Lab	70.17, 17.15, 10.67
CIE LCh	70, 20.192, 31.885
Yxy	40.9968, 0.3678, 0.3379
Android (android.graphics.Color)	4291928217 (0xFFD1A099)
YUV	173.8530, -10.2805, 30.8239
Hunter-Lab	64.0288, 12.3280, 11.7635

Details

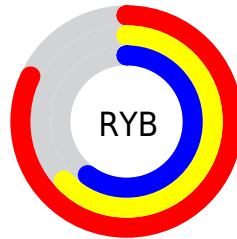
The Hex color **D1A099** is a light color, and the websafe version is hex **CC9999**. A complement of this color would be **99CAD1**, and the grayscale version is **AEAEAE**.

A 20% lighter version of the original color is **FFD7CF**, and **996C66** is the 20% darker color. If you saturate the color by 10%, you get **D18E84**, and if you desaturate by 10%, it is **D1B2AE**.

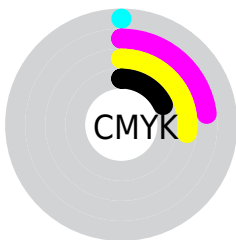
Distribution



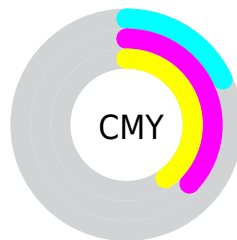
- Red (82%)
- Green (63%)
- Blue (60%)



- Red (82%)
- Yellow (63%)
- Blue (60%)



- Cyan (0%)
- Magenta (23%)
- Yellow (27%)
- Black (18%)



- Cyan (18%)
- Magenta (37%)
- Yellow (40%)

Brightness & Saturation Gradients

These gradients show how the Hex color D1A099 changes by changing the brightness by 10 percent. The first figure shows a shift by +10% for each color and the second figure -10%.

Similar to the brightness gradients but the following saturation gradients show a change of the Hex color D1A099 by changing the saturation by 10% instead.

 D1A099

 D1A099

FFFFFF

 B5867F

 FFD7CF

 996C66

 FFF3EC

 7F544E

 653C37

 4C2622

 34110C

 1F0001

 000000

 D1A099

 D1A099

 D18E84

 D1B2AE

 D17B6F

 D1C5C3

 D1695A

 D1D7D8

 D15745

 D1E9ED

 D14531

 D1FBFF

 D1321C

 D1FFFF

 D12007

 D11A00

Harmonies

Analogous

The Analogous color harmony consists of three colors that are next to each other on the color wheel.



D09FAB



D1A099



C8A58C

Triad

The Triadic color harmony groups three colors that are evenly spaced from another and form a triangle on the color wheel.



D1A099



90B49A



98ADD0

Complementary

The Complementary color scheme is a pair of colors which are on the opposite of each other on the color wheel.



D1A099



99CAD1

Split Complementary

Split-complementary colors differ from the complementary color scheme. The scheme consists of three colors, the original color and two neighbors of the complement color.



83B2CB



D1A099



7FB6AC

Square

The Square scheme is like the rectangle color scheme, but the four colors are evenly spaced on the color wheel.



D1A099



A4B08C



79B5BE



B0A6CB

Rectangle

The Rectangle color scheme consists of four colors that form a rectangle on the color wheel.



D1A099



BEA988



79B5BE



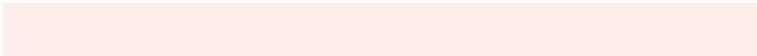
90AFCF

Sweetspot

The Sweet Spot groups the original color and five complimentary colors.



D1A099



FFEDEB



D199CA



807473



000000



808080

Same Dimension

The Same Dimension uses a secret algorithm to generate beautiful new colors.



D1A099



FFB8AD



D1BC99



695F5E



A81500



290500

Inverse Universe

The Inverse Universe completely reimagines the original color for something new.



99CAD1



ADF5FF



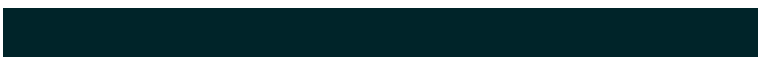
99AED1



5E6769



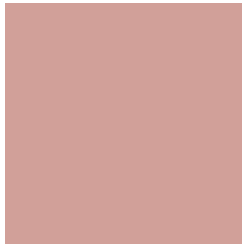
0093A8



002429

Previews

White Background



This preview shows how the Hex color D1A099 looks on a white background.

Color Contrast Check

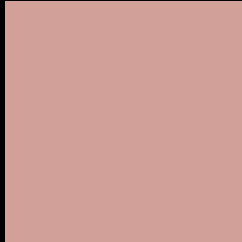
Large Text (above 18pt) WCAG AA × Fail

Any Text WCAG AA × Fail

Large Text (above 18pt) WCAG AAA × Fail

Any Text WCAG AAA × Fail

Black Background



This preview shows how the Hex color D1A099 looks on a black background.

Color Contrast Check

Large Text (above 18pt) WCAG AA ✓ Pass

Any Text WCAG AA ✓ Pass

Large Text (above 18pt) WCAG AAA ✓ Pass

Any Text WCAG AAA ✓ Pass

If you want to check with other color combinations, try the [Color Contrast Checker](#).

Hex D1A099 Background



This preview shows how black text looks on a background with the Hex color D1A099.

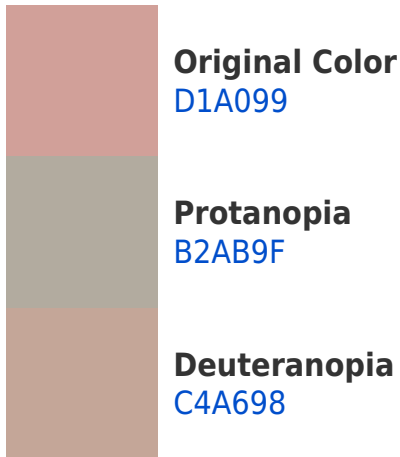


This preview shows how white text looks on a background with the Hex color D1A099.

Color Blindness Simulation

Color vision deficiency is a very complex topic, and I could not describe the different causes any better than Wikipedia does, so if you want to learn more, you should check out their [article about color blindness](#).

Dichromacy





Tritanopia
D39DAA

Trichromacy



Original Color
D1A099

Protanomaly
BDA79D

Deuteranomaly
C9A498

Tritanomaly
D29EA4

Monochromacy



Original Color
D1A099

Achromatopsia
AEAEAE

Achromatomaly
BBA9A6

CSS Examples

Text

The CSS property to change the color of the text to Hex D1A099 is called "color". The color property can be set on classes, ids or directly on the HTML element.

This example shows how text in the color #D1A099 looks like.

```
.text, #text, p{  
    color:#D1A099  
}
```

If you want to add a text shadow in that color use the text-shadow property, you can generate a text shadow directly with our [CSS Text Shadow Generator](#).

Here you see how black text with a 4 pixel #D1A099 colored shadow looks like.

```
.shadow{ text-shadow: 4px 4px 2px #D1A099
}
```

Border

The CSS property to change the border of an element to Hex D1A099 is called "border". The border property can be set on classes, ids or directly on the HTML element.

This example shows the color as border, it can be applied via the CSS property "border" or "border-color".

```
.border, #border, table{ border:4px solid
#D1A099 }
```

If only the border color should be changed use the property `border-color`.

```
.border{ border-color:#D1A099 }
```

If you want to add a box shadow in that color use:

Here you see how a box with a 4 pixel #D1A099 colored shadow looks like.

```
.boxshadow{ -moz-box-shadow:4px 4px 4px  
4px #D1A099; -webkit-box-shadow:4px 4px  
4px 4px #D1A099; box-shadow:4px 4px 4px  
4px #D1A099 }
```

Background

The CSS property to change the background color of an element to Hex D1A099 is called "background". The background property can be set on classes, ids or directly on the HTML element.

```
.background, #background, body{  
background:#D1A099 }
```

If only the background color should be changed can be used:

```
.background{ background-color:#D1A099 }
```

This example shows the color as background, it is applied via the CSS property "background".

To optimize and compress your CSS code, you can use our [online CSS compressor and optimizer](#) based on csstidy. If you want to create a linear or radial gradient as background or border, check our [CSS Gradient Generator](#).

Hey! You found this booklet interesting? Support Converting Colors with the new Membership Option!

The pro membership hides all ads, plus gives you double the colors in the color bucket, and more awesome pro features!

[Learn more, Memberships starting at \\$2.50/m!](#)

**Follow me
on Twitter!**

@ConvertingColor