

# Converting Colors

Hex(D1A09F)

Have a look what the booklet for  
Hex(D1A09F) contains.

<b>Hex(D1A09F)</b> .....	3
<i><b>Conversions</b></i> .....	4
<i><b>Details</b></i> .....	6
<i><b>Harmonies</b></i> .....	11
<i><b>Previews</b></i> .....	23
<i><b>Color Blindness Simulation</b></i> .....	26
<i><b>CSS Examples</b></i> .....	29

# **Color**

**Hex(D1A09F)**

# Conversions

## Conversions Part 1

Format	Color
Hex	D1A09F
RGB	209, 160, 159
RGB Percent	82%, 63%, 62%
CMY	0.1804, 0.3725, 0.3765
CMYK	0.00, 0.23, 0.24, 0.18
HSL	1°, 35%, 72%
HSV	1°, 24%, 82%
XYZ	45.1233, 41.2001, 38.3751
YIQ	174.5370, 29.5250, 10.0770

# Conversions

## Conversions Part 2

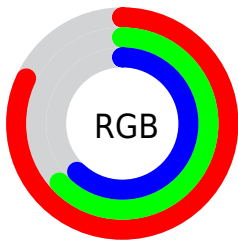
<b>Format</b>	<b>Color</b>
R <sub>Y</sub> B	209, 160, 159
Decimal	13738143
CIE Lab	70.32, 18.00, 7.55
CIE LCh	70, 19.520, 22.746
Yxy	41.2001, 0.3619, 0.3304
Android (android.graphics.Color)	4291928223 (0xFFD1A09F)
YUV	174.5370, -7.6597, 30.2241
Hunter-Lab	64.1873, 13.1566, 9.4840

# Details

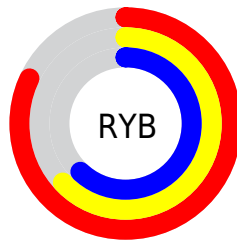
The Hex color **D1A09F** is a light color, and the websafe version is hex **CC9999**. A complement of this color would be **9FD0D1**, and the grayscale version is **AFAFAF**.

A 20% lighter version of the original color is **FFD7D6**, and **9A6C6C** is the 20% darker color. If you saturate the color by 10%, you get **D18C8A**, and if you desaturate by 10%, it is **D1B4B4**.

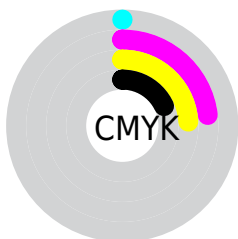
# Distribution



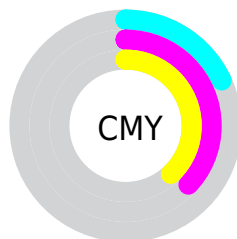
- Red (82%)
- Green (63%)
- Blue (62%)



- Red (82%)
- Yellow (63%)
- Blue (62%)



- Cyan (0%)
- Magenta (23%)
- Yellow (24%)
- Black (18%)



- Cyan (18%)
- Magenta (37%)
- Yellow (38%)

# Brightness & Saturation Gradients

These gradients show how the Hex color D1A09F changes by changing the brightness by 10 percent. The first figure shows a shift by +10% for each color and the second figure -10%.

Similar to the brightness gradients but the following saturation gradients show a change of the Hex color D1A09F by changing the saturation by 10% instead.



 D1A09F

 D1A09F

FFFFFF

 B58685

 FFD7D6

 9A6C6C

 FFF3F2

 7F5453

 653C3C

 4C2627

 341112

 200001

 000000

 D1A09F

 D1A09F

 D18C8A

 D1B4B4

 D17775

 D1C9C9

 D16360

 D1DDDE

 D14E4B

 D1F2F3

 D13A36

 D1FFFF

 D12522

 D1110D

 D10400

# Harmonies

## Analogous

The Analogous color harmony consists of three colors that are next to each other on the color wheel.



CDA0B1



D1A09F



CBA490

# Triad

The Triadic color harmony groups three colors that are evenly spaced from another and form a triangle on the color wheel.



D1A09F



97B396



92AFCF

# Complementary

The Complementary color scheme is a pair of colors which are on the opposite of each other on the color wheel.



D1A09F



9FD0D1

# Split Complementary

Split-complementary colors differ from the complementary color scheme. The scheme consists of three colors, the original color and two neighbors of the complement color.



80B3C8



D1A09F



85B6A7

# Square

The Square scheme is like the rectangle color scheme, but the four colors are evenly spaced on the color wheel.



D1A09F



ABAF8B



7CB6B9



AAA9CC

# Rectangle

The Rectangle color scheme consists of four colors that form a rectangle on the color wheel.



D1A09F



C3A78B



7CB6B9



8BB1CD

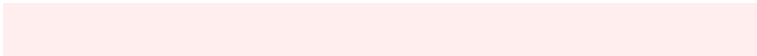


# Sweetspot

The Sweet Spot groups the original color and five complimentary colors.



D1A09F



FFEEED



D19FD0



807675



000000



808080



# Same Dimension

The Same Dimension uses a secret algorithm to generate beautiful new colors.



D1A09F



FFB7B5



D1B99F



695E5E



A80300



290100



# Inverse Universe

The Inverse Universe completely reimagines the original color for something new.



9FD0D1



B5FEFF



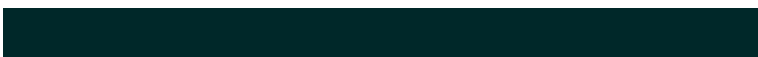
9FB7D1



5E6869



00A5A8

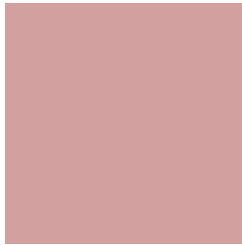


002829



# Previews

## White Background



This preview shows how the Hex color D1A09F looks on a white background.

## Color Contrast Check

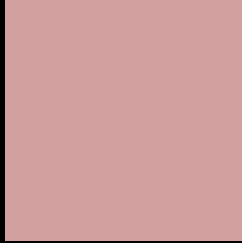
Large Text (above 18pt) WCAG AA × Fail

Any Text WCAG AA × Fail

Large Text (above 18pt) WCAG AAA × Fail

Any Text WCAG AAA × Fail

# Black Background



This preview shows how the Hex color D1A09F looks on a black background.

## Color Contrast Check

Large Text (above 18pt) WCAG AA ✓ Pass

Any Text WCAG AA ✓ Pass

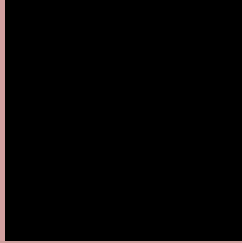
Large Text (above 18pt) WCAG AAA ✓ Pass

Any Text WCAG AAA ✓ Pass

If you want to check with other color combinations, try the [Color Contrast Checker](#).



## Hex D1A09F Background



This preview shows how black text looks on a background with the Hex color D1A09F.

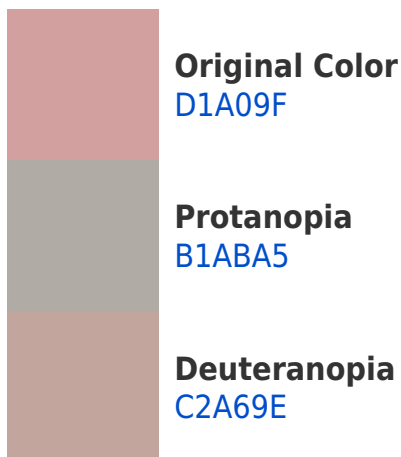


This preview shows how white text looks on a background with the Hex color D1A09F.

# Color Blindness Simulation

Color vision deficiency is a very complex topic, and I could not describe the different causes any better than Wikipedia does, so if you want to learn more, you should check out their [article about color blindness](#).

## Dichromacy





**Tritanopia**  
D29EAA

# Trichromacy



**Original Color**  
D1A09F

**Protanomaly**  
BDA7A3

**Deuteranomaly**  
C7A49E

**Tritanomaly**  
D29FA6

# Monochromacy



**Original Color**  
D1A09F

**Achromatopsia**  
AFAFAF

**Achromatomaly**  
BBAAA9

# CSS Examples

## Text

The CSS property to change the color of the text to Hex D1A09F is called "color". The color property can be set on classes, ids or directly on the HTML element.

This example shows how text in the color #D1A09F looks like.

```
.text, #text, p{  
    color:#D1A09F  
}
```

If you want to add a text shadow in that color use the text-shadow property, you can generate a text shadow directly with our [CSS Text Shadow Generator](#).

Here you see how black text with a 4 pixel #D1A09F colored shadow looks like.

```
.shadow{ text-shadow: 4px 4px 2px #D1A09F
}
```

## Border

The CSS property to change the border of an element to Hex D1A09F is called "border". The border property can be set on classes, ids or directly on the HTML element.

This example shows the color as border, it can be applied via the CSS property "border" or "border-color".

```
.border, #border, table{ border:4px solid
#D1A09F }
```

If only the border color should be changed use the property `border-color`.

```
.border{ border-color:#D1A09F }
```

If you want to add a box shadow in that color use:

Here you see how a box with a 4 pixel #D1A09F colored shadow looks like.

```
.boxshadow{ -moz-box-shadow:4px 4px 4px  
4px #D1A09F; -webkit-box-shadow:4px 4px  
4px 4px #D1A09F; box-shadow:4px 4px 4px  
4px #D1A09F }
```

# Background

The CSS property to change the background color of an element to Hex D1A09F is called "background". The background property can be set on classes, ids or directly on the HTML element.

```
.background, #background, body{  
background:#D1A09F }
```

If only the background color should be changed can be used:

```
.background{ background-color:#D1A09F }
```

This example shows the color as background, it is applied via the CSS property "background".

To optimize and compress your CSS code, you can use our [online CSS compressor and optimizer](#) based on csstidy. If you want to create a linear or radial gradient as background or border, check our [CSS Gradient Generator](#).



Hey! You found this booklet interesting? Support Converting Colors with the new Membership Option!

The pro membership hides all ads, plus gives you double the colors in the color bucket, and more awesome pro features!

**[Learn more, Memberships starting at \\$2.50/m!](#)**

**Follow me  
on Twitter!**

@ConvertingColor