

Converting Colors

Hex(D1A2A0)

Have a look what the booklet for
Hex(D1A2A0) contains.

Hex(D1A2A0)	3
<i>Conversions</i>	4
<i>Details</i>	6
<i>Harmonies</i>	11
<i>Previews</i>	23
<i>Color Blindness Simulation</i>	26
<i>CSS Examples</i>	29

Color

Hex(D1A2A0)

Conversions

Conversions Part 1

Format	Color
Hex	D1A2A0
RGB	209, 162, 160
RGB Percent	82%, 64%, 63%
CMY	0.1804, 0.3647, 0.3725
CMYK	0.00, 0.22, 0.23, 0.18
HSL	2°, 35%, 72%
HSV	2°, 23%, 82%
XYZ	45.5600, 41.9340, 38.9505
YIQ	175.8250, 28.6540, 9.3420

Conversions

Conversions Part 2

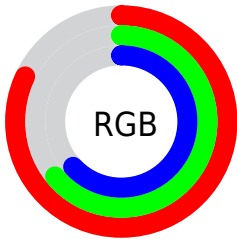
Format	Color
R_{YB}	209, 162, 160
Decimal	13738656
CIE Lab	70.83, 17.06, 7.72
CIE LCh	71, 18.727, 24.356
Yxy	41.9340, 0.3603, 0.3316
Android (android.graphics.Color)	4291928736 (0xFFD1A2A0)
YUV	175.8250, -7.8017, 29.0945
Hunter-Lab	64.7565, 12.2613, 9.6671

Details

The Hex color **D1A2A0** is a light color, and the websafe version is hex **CC9999**. A complement of this color would be **A0CFD1**, and the grayscale version is **B0B0B0**.

A 20% lighter version of the original color is **FFD9D7**, and **9A6E6D** is the 20% darker color. If you saturate the color by 10%, you get **D18E8B**, and if you desaturate by 10%, it is **D1B6B5**.

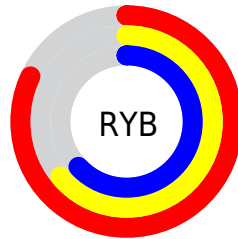
Distribution



Red (82%)

Green (64%)

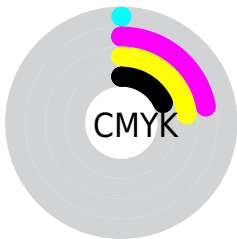
Blue (63%)



Red (82%)

Yellow (64%)

Blue (63%)

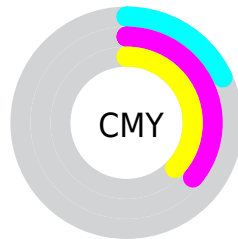


Cyan (0%)

Magenta (22%)

Yellow (23%)

Black (18%)



Cyan (18%)

Magenta (36%)

Yellow (37%)

Brightness & Saturation Gradients

These gradients show how the Hex color D1A2A0 changes by changing the brightness by 10 percent. The first figure shows a shift by +10% for each color and the second figure -10%.

Similar to the brightness gradients but the following saturation gradients show a change of the Hex color D1A2A0 by changing the saturation by 10% instead.

 D1A2A0

 D1A2A0

FFFFFF

 B58886

 FFD9D7

 9A6E6D

 FFF6F3

 7F5654

 653E3D

 4C2827

 341313

 210000

 000000

 D1A2A0

 D1A2A0

 D18E8B

 D1B6B5

 D17A76

 D1CACA

 D16661

 D1DEDF

 D1524C

 D1F2F4

 D13E38

 D1FFFF

 D12A23

 D1160E

 D10900

Harmonies

Analogous

The Analogous color harmony consists of three colors that are next to each other on the color wheel.



CDA2B1



D1A2A0



CBA692

Triad

The Triadic color harmony groups three colors that are evenly spaced from another and form a triangle on the color wheel.



D1A2A0



98B599



96B0CF

Complementary

The Complementary color scheme is a pair of colors which are on the opposite of each other on the color wheel.



D1A2A0



A0CFD1

Split Complementary

Split-complementary colors differ from the complementary color scheme. The scheme consists of three colors, the original color and two neighbors of the complement color.



85B4C8



D1A2A0



87B7A9

Square

The Square scheme is like the rectangle color scheme, but the four colors are evenly spaced on the color wheel.



D1A2A0



ACB18E



7FB7BB



ACAACC

Rectangle

The Rectangle color scheme consists of four colors that form a rectangle on the color wheel.



D1A2A0



C3A98D



7FB7BB



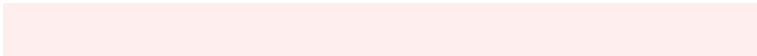
8FB2CE

Sweetspot

The Sweet Spot groups the original color and five complimentary colors.



D1A2A0



FFEEED



D1A0CF



807675



000000



808080

Same Dimension

The Same Dimension uses a secret algorithm to generate beautiful new colors.



D1A2A0



FFBBB8



D1BAA0



695F5E



A80700



290200

Inverse Universe

The Inverse Universe completely reimagines the original color for something new.



A0CFD1



B8FCFF



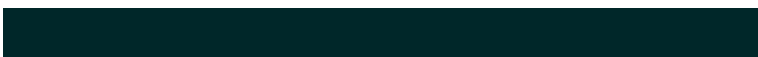
A0B7D1



5E6869



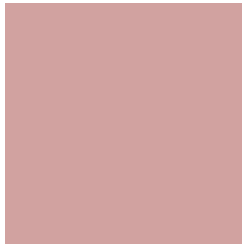
00A1A8



002729

Previews

White Background



This preview shows how the Hex color D1A2A0 looks on a white background.

Color Contrast Check

Large Text (above 18pt) WCAG AA × Fail

Any Text WCAG AA × Fail

Large Text (above 18pt) WCAG AAA × Fail

Any Text WCAG AAA × Fail

Black Background



This preview shows how the Hex color D1A2A0 looks on a black background.

Color Contrast Check

Large Text (above 18pt) WCAG AA ✓ Pass

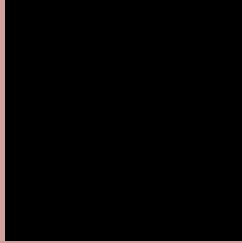
Any Text WCAG AA ✓ Pass

Large Text (above 18pt) WCAG AAA ✓ Pass

Any Text WCAG AAA ✓ Pass

If you want to check with other color combinations, try the [Color Contrast Checker](#).

Hex D1A2A0 Background



This preview shows how black text looks on a background with the Hex color D1A2A0.



This preview shows how white text looks on a background with the Hex color D1A2A0.

Color Blindness Simulation

Color vision deficiency is a very complex topic, and I could not describe the different causes any better than Wikipedia does, so if you want to learn more, you should check out their [article about color blindness](#).

Dichromacy



Original Color
D1A2A0

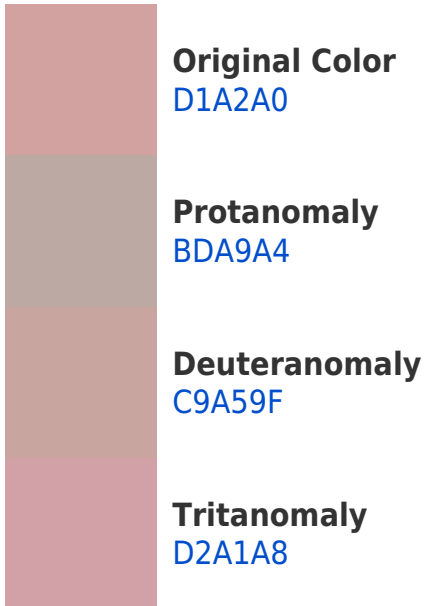
Protanopia
B2ADA6

Deuteranopia
C4A79F

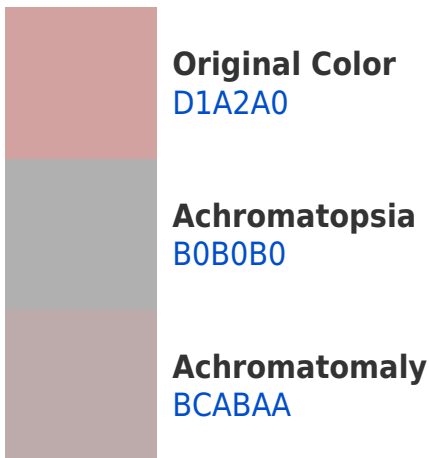


Tritanopia
D2A0AC

Trichromacy



Monochromacy



CSS Examples

Text

The CSS property to change the color of the text to Hex D1A2A0 is called "color". The color property can be set on classes, ids or directly on the HTML element.

This example shows how text in the color #D1A2A0 looks like.

```
.text, #text, p{  
    color:#D1A2A0  
}
```

If you want to add a text shadow in that color use the text-shadow property, you can generate a text shadow directly with our [CSS Text Shadow Generator](#).

Here you see how black text with a 4 pixel #D1A2A0 colored shadow looks like.

```
.shadow{ text-shadow: 4px 4px 2px #D1A2A0  
}
```

Border

The CSS property to change the border of an element to Hex D1A2A0 is called "border". The border property can be set on classes, ids or directly on the HTML element.

This example shows the color as border, it can be applied via the CSS property "border" or "border-color".

```
.border, #border, table{ border:4px solid  
#D1A2A0 }
```

If only the border color should be changed use the property `border-color`.

```
.border{ border-color:#D1A2A0 }
```

If you want to add a box shadow in that color use:

Here you see how a box with a 4 pixel #D1A2A0 colored shadow looks like.

```
.boxshadow{ -moz-box-shadow:4px 4px 4px  
4px #D1A2A0; -webkit-box-shadow:4px 4px  
4px 4px #D1A2A0; box-shadow:4px 4px 4px  
4px #D1A2A0 }
```

Background

The CSS property to change the background color of an element to Hex D1A2A0 is called "background". The background property can be set on classes, ids or directly on the HTML element.

```
.background, #background, body{  
background:#D1A2A0 }
```

If only the background color should be changed can be used:

```
.background{ background-color:#D1A2A0 }
```

This example shows the color as background, it is applied via the CSS property "background".

To optimize and compress your CSS code, you can use our [online CSS compressor and optimizer](#) based on csstidy. If you want to create a linear or radial gradient as background or border, check our [CSS Gradient Generator](#).

Hey! You found this booklet interesting? Support Converting Colors with the new Membership Option!

The pro membership hides all ads, plus gives you double the colors in the color bucket, and more awesome pro features!

[Learn more, Memberships starting at \\$2.50/m!](#)

**Follow me
on Twitter!**

@ConvertingColor