

Converting Colors

Hex(D1ABB1)

Have a look what the booklet for
Hex(D1ABB1) contains.

Hex(D1ABB1)	3
<i>Conversions</i>	4
<i>Details</i>	6
<i>Harmonies</i>	11
<i>Previews</i>	23
<i>Color Blindness Simulation</i>	26
<i>CSS Examples</i>	29

Color

Hex(D1ABB1)

Conversions

Conversions Part 1

Format	Color
Hex	D1ABB1
RGB	209, 171, 177
RGB Percent	82%, 67%, 69%
CMY	0.1804, 0.3294, 0.3059
CMYK	0.00, 0.18, 0.15, 0.18
HSL	351°, 29%, 75%
HSV	351°, 18%, 82%
XYZ	48.7932, 45.8555, 47.8743
YIQ	183.0460, 20.7220, 9.9220

Conversions

Conversions Part 2

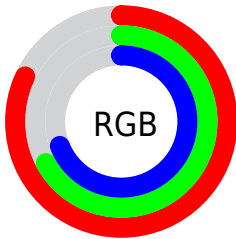
Format	Color
R _Y B	209, 171, 177
Decimal	13740977
CIE Lab	73.45, 14.79, 2.15
CIE LCh	73, 14.941, 8.255
Yxy	45.8555, 0.3424, 0.3217
Android (android.graphics.Color)	4291931057 (0xFFD1ABB1)
YUV	183.0460, -2.9807, 22.7617
Hunter-Lab	67.7167, 10.1140, 5.4849

Details

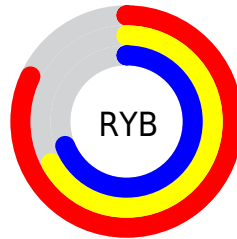
The Hex color **D1ABB1** is a light color, and the websafe version is hex **CC9999**. A complement of this color would be **ABD1CB**, and the grayscale version is **B7B7B7**.

A 20% lighter version of the original color is **FFE2E9**, and **9A777D** is the 20% darker color. If you saturate the color by 10%, you get **D1969F**, and if you desaturate by 10%, it is **D1C0C3**.

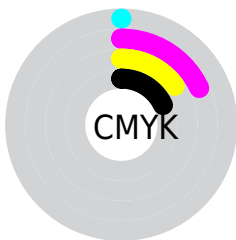
Distribution



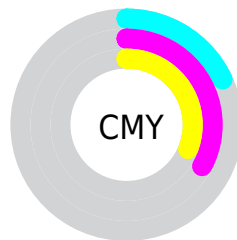
- Red (82%)
- Green (67%)
- Blue (69%)



- Red (82%)
- Yellow (67%)
- Blue (69%)



- Cyan (0%)
- Magenta (18%)
- Yellow (15%)
- Black (18%)



- Cyan (18%)
- Magenta (33%)
- Yellow (31%)

Brightness & Saturation Gradients

These gradients show how the Hex color D1ABB1 changes by changing the brightness by 10 percent. The first figure shows a shift by +10% for each color and the second figure -10%.

Similar to the brightness gradients but the following saturation gradients show a change of the Hex color D1ABB1 by changing the saturation by 10% instead.

 D1ABB1

 D1ABB1

FFFFFF

 B59096

 FFE2E9

 9A777D

 805E64

 66464C

 4E2F35

 361A20

 220108

 000000

 D1ABB1

 D1ABB1

 D1969F

 D1C0C3

 D1818E

 D1D5D4

 D16C7C

 D1EAE6

 D1576B

 D1FFF7

 D14259

 D1FFFF

 D12E47

 D11936

 D10424

 D10021

Harmonies

Analogous

The Analogous color harmony consists of three colors that are next to each other on the color wheel.



CAACBF



D1ABB1



D0ADA4

Triad

The Triadic color harmony groups three colors that are evenly spaced from another and form a triangle on the color wheel.



D1ABB1



ACB99F



9AB9CD

Complementary

The Complementary color scheme is a pair of colors which are on the opposite of each other on the color wheel.



D1ABB1



ABD1CB

Split Complementary

Split-complementary colors differ from the complementary color scheme. The scheme consists of three colors, the original color and two neighbors of the complement color.



92BCC5



D1ABB1



9DBCAA

Square

The Square scheme is like the rectangle color scheme, but the four colors are evenly spaced on the color wheel.



D1ABB1



BCB599



93BDB8



AAB4CF

Rectangle

The Rectangle color scheme consists of four colors that form a rectangle on the color wheel.



D1ABB1



CCAF9E



93BDB8



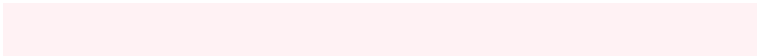
96BACB

Sweetspot

The Sweet Spot groups the original color and five complimentary colors.



D1ABB1



FFF2F4



CBABD1



807879



000000



808080

Same Dimension

The Same Dimension uses a secret algorithm to generate beautiful new colors.



D1ABB1



FFC7D0



D1B8AB



695E60



A8001B



290006

Inverse Universe

The Inverse Universe completely reimagines the original color for something new.



D1ABB1



FFC7D0



ABC4D1



695E60



A8001B



290006

Previews

White Background



This preview shows how the Hex color D1ABB1 looks on a white background.

Color Contrast Check

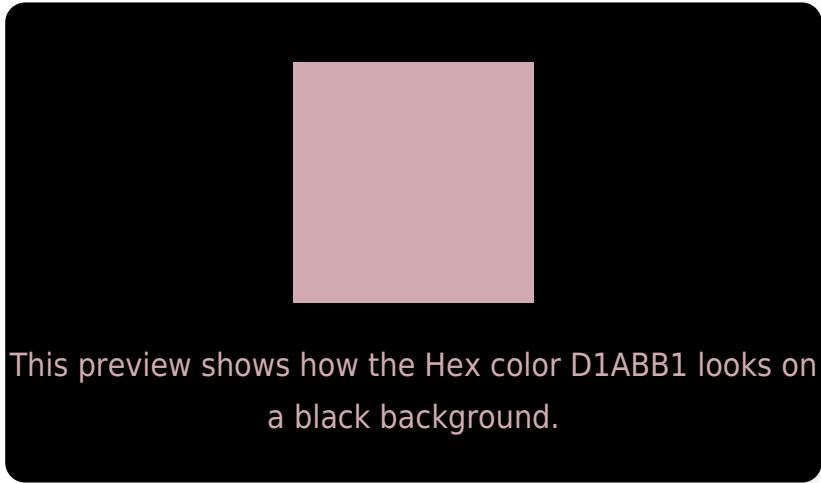
Large Text (above 18pt) WCAG AA × Fail

Any Text WCAG AA × Fail

Large Text (above 18pt) WCAG AAA × Fail

Any Text WCAG AAA × Fail

Black Background



Color Contrast Check

Large Text (above 18pt) WCAG AA ✓ Pass

Any Text WCAG AA ✓ Pass

Large Text (above 18pt) WCAG AAA ✓ Pass

Any Text WCAG AAA ✓ Pass

If you want to check with other color combinations, try the [Color Contrast Checker](#).

Hex D1ABB1 Background



This preview shows how black text looks on a background with the Hex color D1ABB1.

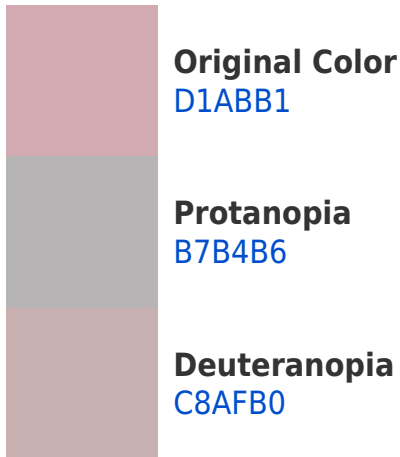


This preview shows how white text looks on a background with the Hex color D1ABB1.

Color Blindness Simulation

Color vision deficiency is a very complex topic, and I could not describe the different causes any better than Wikipedia does, so if you want to learn more, you should check out their [article about color blindness](#).

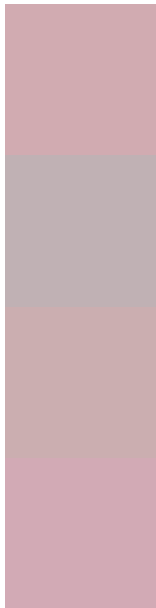
Dichromacy





Tritanopia
D2AAB7

Trichromacy



Original Color
D1ABB1

Protanomaly
C0B1B4

Deuteranomaly
CBAEB0

Tritanomaly
D2AAB5

Monochromacy



Original Color
D1ABB1

Achromatopsia
B7B7B7

Achromatomaly
C0B3B5

CSS Examples

Text

The CSS property to change the color of the text to Hex D1ABB1 is called "color". The color property can be set on classes, ids or directly on the HTML element.

This example shows how text in the color #D1ABB1 looks like.

```
.text, #text, p{  
    color:#D1ABB1  
}
```

If you want to add a text shadow in that color use the text-shadow property, you can generate a text shadow directly with our [CSS Text Shadow Generator](#).

Here you see how black text with a 4 pixel #D1ABB1 colored shadow looks like.

```
.shadow{ text-shadow: 4px 4px 2px #D1ABB1  
}
```

Border

The CSS property to change the border of an element to Hex D1ABB1 is called "border". The border property can be set on classes, ids or directly on the HTML element.

This example shows the color as border, it can be applied via the CSS property "border" or "border-color".

```
.border, #border, table{ border:4px solid  
#D1ABB1 }
```

If only the border color should be changed use the property `border-color`.

```
.border{ border-color:#D1ABB1 }
```

If you want to add a box shadow in that color use:

Here you see how a box with a 4 pixel #D1ABB1 colored shadow looks like.

```
.boxshadow{ -moz-box-shadow:4px 4px 4px  
4px #D1ABB1; -webkit-box-shadow:4px 4px  
4px 4px #D1ABB1; box-shadow:4px 4px 4px  
4px #D1ABB1 }
```

Background

The CSS property to change the background color of an element to Hex D1ABB1 is called "background". The background property can be set on classes, ids or directly on the HTML element.

```
.background, #background, body{  
background:#D1ABB1 }
```

If only the background color should be changed can be used:

```
.background{ background-color:#D1ABB1 }
```

This example shows the color as background, it is applied via the CSS property "background".

To optimize and compress your CSS code, you can use our [online CSS compressor and optimizer](#) based on csstidy. If you want to create a linear or radial gradient as background or border, check our [CSS Gradient Generator](#).

Hey! You found this booklet interesting? Support Converting Colors with the new Membership Option!

The pro membership hides all ads, plus gives you double the colors in the color bucket, and more awesome pro features!

[Learn more, Memberships starting at \\$2.50/m!](#)

**Follow me
on Twitter!**

@ConvertingColor