

Converting Colors

Hex(D1AD8D)

Have a look what the booklet for
Hex(D1AD8D) contains.

Hex(D1AD8D)	3
<i>Conversions</i>	4
<i>Details</i>	6
<i>Harmonies</i>	11
<i>Previews</i>	23
<i>Color Blindness Simulation</i>	26
<i>CSS Examples</i>	29

Color

Hex(D1AD8D)

Conversions

Conversions Part 1

Format	Color
Hex	D1AD8D
RGB	209, 173, 141
RGB Percent	82%, 68%, 55%
CMY	0.1804, 0.3216, 0.4471
CMYK	0.00, 0.17, 0.33, 0.18
HSL	28°, 42%, 69%
HSV	28°, 33%, 82%
XYZ	46.0458, 45.3655, 31.5289
YIQ	180.1160, 31.7280, -2.3200

Conversions

Conversions Part 2

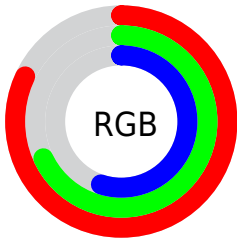
Format	Color
R_{YB}	209, 201, 141
Decimal	13741453
CIE Lab	73.13, 8.50, 21.36
CIE LCh	73, 22.990, 68.290
Yxy	45.3655, 0.3745, 0.3690
Android (android.graphics.Color)	4291931533 (0xFFD1AD8D)
YUV	180.1160, -19.2842, 25.3313
Hunter-Lab	67.3539, 4.1602, 19.3937

Details

The Hex color **D1AD8D** is a light color, and the websafe version is hex **CC9966**. A complement of this color would be **8DB1D1**, and the grayscale version is **B4B4B4**.

A 20% lighter version of the original color is **FFE4C3**, and **99795B** is the 20% darker color. If you saturate the color by 10%, you get **D1A278**, and if you desaturate by 10%, it is **D1B8A2**.

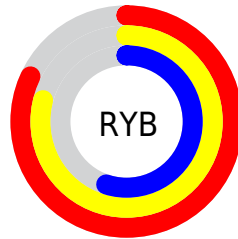
Distribution



Red (82%)

Green (68%)

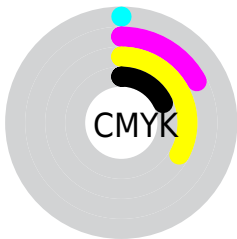
Blue (55%)



Red (82%)

Yellow (79%)

Blue (55%)

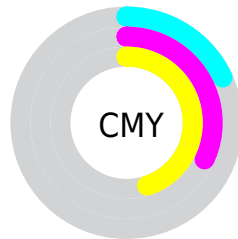


Cyan (0%)

Magenta (17%)

Yellow (33%)

Black (18%)



Cyan (18%)

Magenta (32%)

Yellow (45%)

Brightness & Saturation Gradients

These gradients show how the Hex color D1AD8D changes by changing the brightness by 10 percent. The first figure shows a shift by +10% for each color and the second figure -10%.

Similar to the brightness gradients but the following saturation gradients show a change of the Hex color D1AD8D by changing the saturation by 10% instead.

 D1AD8D

FFFFFF

 FFE4C3

 FFFFFD

 FFFFFB

 D1AD8D

 B59273

 99795B

 7F6043

 65482C

 4C3217

 341D00

 1D0400

 000000

 D1AD8D

 D1AD8D

 D1A278

 D1B8A2

 D19763

 D1C3B7

 D18C4E

 D1CECC

 D18139

 D1D9E1

 D17625

 D1E4F6

 D16B10

 D1EFFF

 D16200

 D1FAFF

 D1FFFF

Harmonies

Analogous

The Analogous color harmony consists of three colors that are next to each other on the color wheel.



DDA79A



D1AD8D



BDB48A

Triad

The Triadic color harmony groups three colors that are evenly spaced from another and form a triangle on the color wheel.



D1AD8D



7DC0B9



BEACD5

Complementary

The Complementary color scheme is a pair of colors which are on the opposite of each other on the color wheel.



D1AD8D



8DB1D1

Split Complementary

Split-complementary colors differ from the complementary color scheme. The scheme consists of three colors, the original color and two neighbors of the complement color.



A2B3DD



D1AD8D



79BECD

Square

The Square scheme is like the rectangle color scheme, but the four colors are evenly spaced on the color wheel.



D1AD8D



8EBEA3



88BADA



D4A6C4

Rectangle

The Rectangle color scheme consists of four colors that form a rectangle on the color wheel.



D1AD8D



AEB88E



88BADA



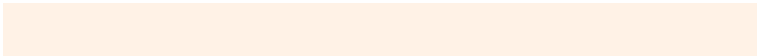
B6AFD9

Sweetspot

The Sweet Spot groups the original color and five complimentary colors.



D1AD8D



FFF2E6



D18DB1



807770



000000



808080

Same Dimension

The Same Dimension uses a secret algorithm to generate beautiful new colors.



D1AD8D



FFCA9C



D1CF8D



69635E



A84F00



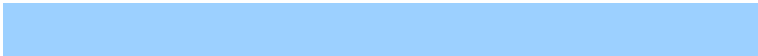
291300

Inverse Universe

The Inverse Universe completely reimagines the original color for something new.



8DB1D1



9CD0FF



8D8FD1



5E6469



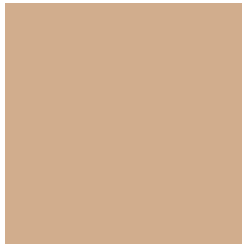
0059A8



001629

Previews

White Background



This preview shows how the Hex color D1AD8D looks on a white background.

Color Contrast Check

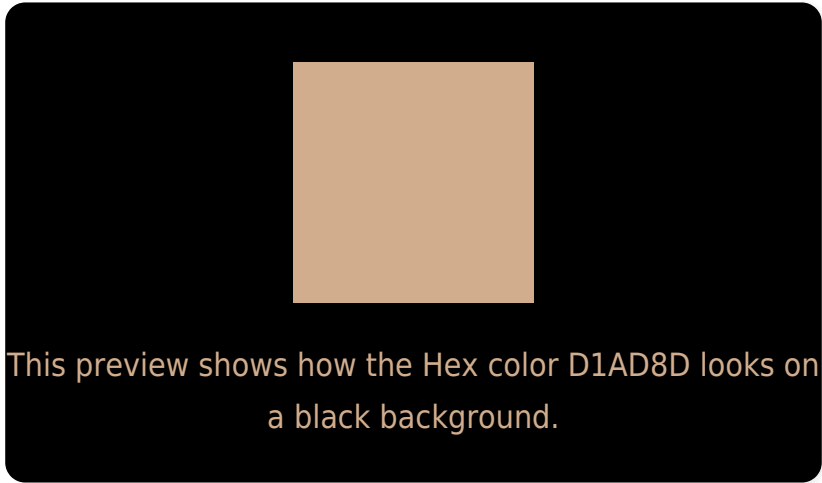
Large Text (above 18pt) WCAG AA × Fail

Any Text WCAG AA × Fail

Large Text (above 18pt) WCAG AAA × Fail

Any Text WCAG AAA × Fail

Black Background



Color Contrast Check

Large Text (above 18pt) WCAG AA ✓ Pass

Any Text WCAG AA ✓ Pass

Large Text (above 18pt) WCAG AAA ✓ Pass

Any Text WCAG AAA ✓ Pass

If you want to check with other color combinations, try the [Color Contrast Checker](#).

Hex D1AD8D Background



This preview shows how black text looks on a background with the Hex color D1AD8D.

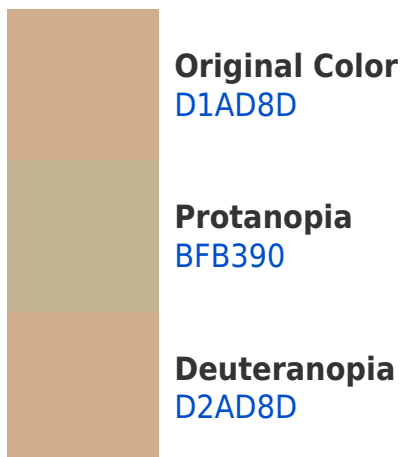


This preview shows how white text looks on a background with the Hex color D1AD8D.

Color Blindness Simulation

Color vision deficiency is a very complex topic, and I could not describe the different causes any better than Wikipedia does, so if you want to learn more, you should check out their [article about color blindness](#).

Dichromacy





Tritanopia
D5A8B5

Trichromacy



Original Color
D1AD8D

Protanomaly
C6B18F

Deuteranomaly
D2AD8D

Tritanomaly
D4AAA6

Monochromacy



Original Color
D1AD8D

Achromatopsia
B4B4B4

Achromatomaly
BFB1A6

CSS Examples

Text

The CSS property to change the color of the text to Hex D1AD8D is called "color". The color property can be set on classes, ids or directly on the HTML element.

This example shows how text in the color #D1AD8D looks like.

```
.text, #text, p{  
    color:#D1AD8D  
}
```

If you want to add a text shadow in that color use the text-shadow property, you can generate a text shadow directly with our [CSS Text Shadow Generator](#).

Here you see how black text with a 4 pixel #D1AD8D colored shadow looks like.

```
.shadow{ text-shadow: 4px 4px 2px #D1AD8D
}
```

Border

The CSS property to change the border of an element to Hex D1AD8D is called "border". The border property can be set on classes, ids or directly on the HTML element.

This example shows the color as border, it can be applied via the CSS property "border" or "border-color".

```
.border, #border, table{ border:4px solid
#D1AD8D }
```

If only the border color should be changed use the property `border-color`.

```
.border{ border-color:#D1AD8D }
```

If you want to add a box shadow in that color use:

Here you see how a box with a 4 pixel #D1AD8D colored shadow looks like.

```
.boxshadow{ -moz-box-shadow:4px 4px 4px  
4px #D1AD8D; -webkit-box-shadow:4px 4px  
4px 4px #D1AD8D; box-shadow:4px 4px 4px  
4px #D1AD8D }
```

Background

The CSS property to change the background color of an element to Hex D1AD8D is called "background". The background property can be set on classes, ids or directly on the HTML element.

```
.background, #background, body{  
background:#D1AD8D }
```

If only the background color should be changed can be used:

```
.background{ background-color:#D1AD8D }
```

This example shows the color as background, it is applied via the CSS property "background".

To optimize and compress your CSS code, you can use our [online CSS compressor and optimizer](#) based on csstidy. If you want to create a linear or radial gradient as background or border, check our [CSS Gradient Generator](#).

Hey! You found this booklet interesting? Support Converting Colors with the new Membership Option!

The pro membership hides all ads, plus gives you double the colors in the color bucket, and more awesome pro features!

[Learn more, Memberships starting at \\$2.50/m!](#)

**Follow me
on Twitter!**

@ConvertingColor