

Converting Colors

Hex(D1AE9A)

Have a look what the booklet for
Hex(D1AE9A) contains.

Hex(D1AE9A)	3
<i>Conversions</i>	4
<i>Details</i>	6
<i>Harmonies</i>	11
<i>Previews</i>	23
<i>Color Blindness Simulation</i>	26
<i>CSS Examples</i>	29

Color

Hex(D1AE9A)

Conversions

Conversions Part 1

Format	Color
Hex	D1AE9A
RGB	209, 174, 154
RGB Percent	82%, 68%, 60%
CMY	0.1804, 0.3176, 0.3961
CMYK	0.00, 0.17, 0.26, 0.18
HSL	22°, 37%, 71%
HSV	22°, 26%, 82%
XYZ	47.2633, 46.1605, 36.9907
YIQ	182.1850, 27.2800, 1.2000

Conversions

Conversions Part 2

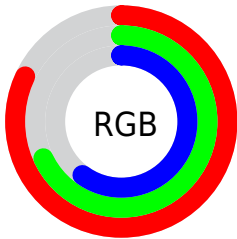
Format	Color
R _Y B	209, 185, 154
Decimal	13741722
CIE Lab	73.65, 9.70, 15.01
CIE LCh	74, 17.878, 57.125
Yxy	46.1605, 0.3624, 0.3540
Android (android.graphics.Color)	4291931802 (0xFFD1AE9A)
YUV	182.1850, -13.8952, 23.5168
Hunter-Lab	67.9415, 5.2752, 15.2787

Details

The Hex color **D1AE9A** is a light color, and the websafe version is hex **CC9999**. A complement of this color would be **9ABDD1**, and the grayscale version is **B6B6B6**.

A 20% lighter version of the original color is **FFE5D0**, and **9A7A67** is the 20% darker color. If you saturate the color by 10%, you get **D1A185**, and if you desaturate by 10%, it is **D1BBAF**.

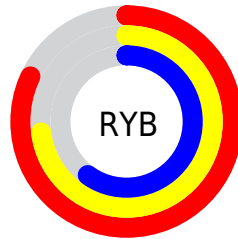
Distribution



Red (82%)

Green (68%)

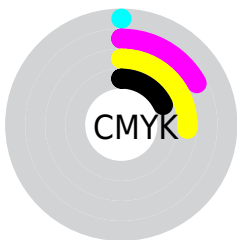
Blue (60%)



Red (82%)

Yellow (73%)

Blue (60%)

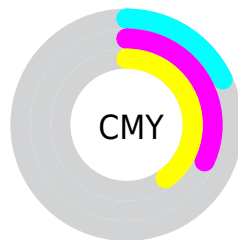


Cyan (0%)

Magenta (17%)

Yellow (26%)

Black (18%)



Cyan (18%)

Magenta (32%)

Yellow (40%)

Brightness & Saturation Gradients

These gradients show how the Hex color D1AE9A changes by changing the brightness by 10 percent. The first figure shows a shift by +10% for each color and the second figure -10%.

Similar to the brightness gradients but the following saturation gradients show a change of the Hex color D1AE9A by changing the saturation by 10% instead.

 D1AE9A

 D1AE9A

FFFFFF

 B59380

 FFE5D0

 9A7A67

 FFFFED

 7F614F

 654938

 4D3222

 351D0D

 1F0500

 000000

 D1AE9A

 D1AE9A

 D1A185

 D1BBAF

 D19370

 D1C9C4

 D1865B

 D1D6D9

 D17946

 D1E3EE

 D16C31

 D1F0FF

 D15E1D

 D1FEFF

 D15108

 D1FFFF

 D14C00

Harmonies

Analogous

The Analogous color harmony consists of three colors that are next to each other on the color wheel.



D7AAA7



D1AE9A



C3B394

Triad

The Triadic color harmony groups three colors that are evenly spaced from another and form a triangle on the color wheel.



D1AE9A



90BEB3



B6B1D2

Complementary

The Complementary color scheme is a pair of colors which are on the opposite of each other on the color wheel.



D1AE9A



9ABDD1

Split Complementary

Split-complementary colors differ from the complementary color scheme. The scheme consists of three colors, the original color and two neighbors of the complement color.



A1B7D5



D1AE9A



89BEC3

Square

The Square scheme is like the rectangle color scheme, but the four colors are evenly spaced on the color wheel.



D1AE9A



9FBCA3



90BBD0



C9ACC7

Rectangle

The Rectangle color scheme consists of four colors that form a rectangle on the color wheel.



D1AE9A



B8B796



90BBD0



AFB3D4

Sweetspot

The Sweet Spot groups the original color and five complimentary colors.



D1AE9A



FFF2EB



D19ABE



807773



000000



808080

Same Dimension

The Same Dimension uses a secret algorithm to generate beautiful new colors.



D1AE9A



FFCBAD



D1C99A



69625E



A83D00



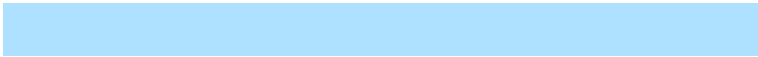
290F00

Inverse Universe

The Inverse Universe completely reimagines the original color for something new.



9ABDD1



ADE1FF



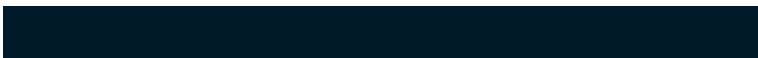
9AA2D1



5E6569



006BA8



001A29

Previews

White Background



This preview shows how the Hex color D1AE9A looks on a white background.

Color Contrast Check

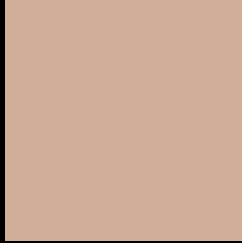
Large Text (above 18pt) WCAG AA × Fail

Any Text WCAG AA × Fail

Large Text (above 18pt) WCAG AAA × Fail

Any Text WCAG AAA × Fail

Black Background



This preview shows how the Hex color D1AE9A looks on a black background.

Color Contrast Check

Large Text (above 18pt) WCAG AA ✓ Pass

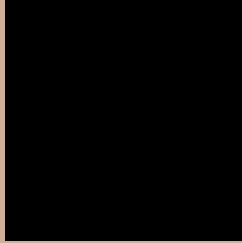
Any Text WCAG AA ✓ Pass

Large Text (above 18pt) WCAG AAA ✓ Pass

Any Text WCAG AAA ✓ Pass

If you want to check with other color combinations, try the [Color Contrast Checker](#).

Hex D1AE9A Background



This preview shows how black text looks on a background with the Hex color D1AE9A.

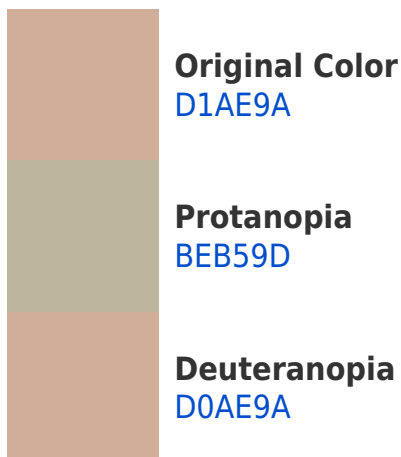


This preview shows how white text looks on a background with the Hex color D1AE9A.

Color Blindness Simulation

Color vision deficiency is a very complex topic, and I could not describe the different causes any better than Wikipedia does, so if you want to learn more, you should check out their [article about color blindness](#).

Dichromacy





Tritanopia
D4AAB7

Trichromacy



Monochromacy



CSS Examples

Text

The CSS property to change the color of the text to Hex D1AE9A is called "color". The color property can be set on classes, ids or directly on the HTML element.

This example shows how text in the color #D1AE9A looks like.

```
.text, #text, p{  
    color:#D1AE9A  
}
```

If you want to add a text shadow in that color use the text-shadow property, you can generate a text shadow directly with our [CSS Text Shadow Generator](#).

Here you see how black text with a 4 pixel #D1AE9A colored shadow looks like.

```
.shadow{ text-shadow: 4px 4px 2px #D1AE9A
}
```

Border

The CSS property to change the border of an element to Hex D1AE9A is called "border". The border property can be set on classes, ids or directly on the HTML element.

This example shows the color as border, it can be applied via the CSS property "border" or "border-color".

```
.border, #border, table{ border:4px solid
#D1AE9A }
```

If only the border color should be changed use the property `border-color`.

```
.border{ border-color:#D1AE9A }
```

If you want to add a box shadow in that color use:

Here you see how a box with a 4 pixel #D1AE9A colored shadow looks like.

```
.boxshadow{ -moz-box-shadow:4px 4px 4px  
4px #D1AE9A; -webkit-box-shadow:4px 4px  
4px 4px #D1AE9A; box-shadow:4px 4px 4px  
4px #D1AE9A }
```

Background

The CSS property to change the background color of an element to Hex D1AE9A is called "background". The background property can be set on classes, ids or directly on the HTML element.

```
.background, #background, body{  
background:#D1AE9A }
```

If only the background color should be changed can be used:

```
.background{ background-color:#D1AE9A }
```

This example shows the color as background, it is applied via the CSS property "background".

To optimize and compress your CSS code, you can use our [online CSS compressor and optimizer](#) based on csstidy. If you want to create a linear or radial gradient as background or border, check our [CSS Gradient Generator](#).

Hey! You found this booklet interesting? Support Converting Colors with the new Membership Option!

The pro membership hides all ads, plus gives you double the colors in the color bucket, and more awesome pro features!

[Learn more, Memberships starting at \\$2.50/m!](#)

**Follow me
on Twitter!**

@ConvertingColor