

Converting Colors

Hex(D1B2B5)

Have a look what the booklet for
Hex(D1B2B5) contains.

Hex(D1B2B5)	3
<i>Conversions</i>	4
<i>Details</i>	6
<i>Harmonies</i>	11
<i>Previews</i>	23
<i>Color Blindness Simulation</i>	26
<i>CSS Examples</i>	29

Color

Hex(D1B2B5)

Conversions

Conversions Part 1

Format	Color
Hex	D1B2B5
RGB	209, 178, 181
RGB Percent	82%, 70%, 71%
CMY	0.1804, 0.3020, 0.2902
CMYK	0.00, 0.15, 0.13, 0.18
HSL	354°, 25%, 76%
HSV	354°, 15%, 82%
XYZ	50.5554, 48.7323, 50.4578
YIQ	187.6110, 17.5130, 7.5050

Conversions

Conversions Part 2

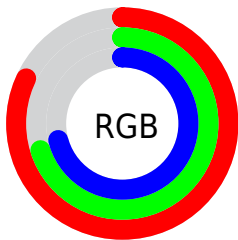
Format	Color
R _Y B	209, 178, 181
Decimal	13742773
CIE Lab	75.28, 11.65, 2.62
CIE LCh	75, 11.939, 12.663
Yxy	48.7323, 0.3376, 0.3254
Android (android.graphics.Color)	4291932853 (0xFFD1B2B5)
YUV	187.6110, -3.2592, 18.7582
Hunter-Lab	69.8085, 7.1049, 6.0110

Details

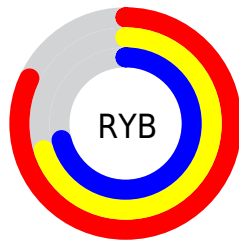
The Hex color **D1B2B5** is a light color, and the websafe version is hex **CC9999**. A complement of this color would be **B2D1CE**, and the grayscale version is **BCBCBC**.

A 20% lighter version of the original color is **FFEAED**, and **9A7D80** is the 20% darker color. If you saturate the color by 10%, you get **D19DA2**, and if you desaturate by 10%, it is **D1C7C8**.

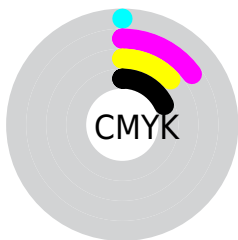
Distribution



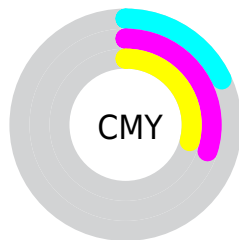
- Red (82%)
- Green (70%)
- Blue (71%)



- Red (82%)
- Yellow (70%)
- Blue (71%)



- Cyan (0%)
- Magenta (15%)
- Yellow (13%)
- Black (18%)



- Cyan (18%)
- Magenta (30%)
- Yellow (29%)

Brightness & Saturation Gradients

These gradients show how the Hex color D1B2B5 changes by changing the brightness by 10 percent. The first figure shows a shift by +10% for each color and the second figure -10%.

Similar to the brightness gradients but the following saturation gradients show a change of the Hex color D1B2B5 by changing the saturation by 10% instead.

 D1B2B5

 D1B2B5

FFFFFF

 B5979A

 FFEAED

 9A7D80

 806467

 674C4F

 4E3538

 372023

 220A0D

 000000

 D1B2B5

 D1B2B5

 D19DA2

 D1C7C8

 D1888F

 D1DCDB

 D1737C

 D1F1EE

 D15E69

 D1FFFF

 D14A57

 D13544

 D12031

 D10B1E

 D10014

Harmonies

Analogous

The Analogous color harmony consists of three colors that are next to each other on the color wheel.



CCB3C0



D1B2B5



D0B3AB

Triad

The Triadic color harmony groups three colors that are evenly spaced from another and form a triangle on the color wheel.



D1B2B5



B1BDA9



A7BCCE

Complementary

The Complementary color scheme is a pair of colors which are on the opposite of each other on the color wheel.



D1B2B5



B2D1CE

Split Complementary

Split-complementary colors differ from the complementary color scheme. The scheme consists of three colors, the original color and two neighbors of the complement color.



9BFC8



D1B2B5



A5FB2

Square

The Square scheme is like the rectangle color scheme, but the four colors are evenly spaced on the color wheel.



D1B2B5



BEBA44



9FC0BE



B4B9CF

Rectangle

The Rectangle color scheme consists of four colors that form a rectangle on the color wheel.



D1B2B5



CCB5A6



9FC0BE



A3BDCD

Sweetspot

The Sweet Spot groups the original color and five complimentary colors.



D1B2B5



FFF5F6



CEB2D1



80797A



000000



808080

Same Dimension

The Same Dimension uses a secret algorithm to generate beautiful new colors.



D1B2B5



FFD1D6



D1BEB2



695E5F



A80010



290004

Inverse Universe

The Inverse Universe completely reimagines the original color for something new.



D1B2B5



FFD1D6



B2C5D1



695E5F



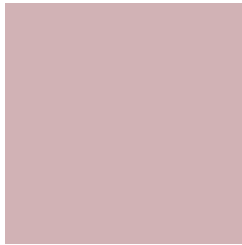
A80010



290004

Previews

White Background



This preview shows how the Hex color D1B2B5 looks on a white background.

Color Contrast Check

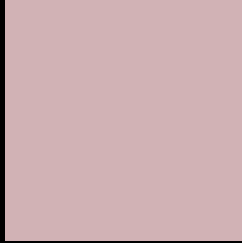
Large Text (above 18pt) WCAG AA × Fail

Any Text WCAG AA × Fail

Large Text (above 18pt) WCAG AAA × Fail

Any Text WCAG AAA × Fail

Black Background



This preview shows how the Hex color D1B2B5 looks on a black background.

Color Contrast Check

Large Text (above 18pt) WCAG AA ✓ Pass

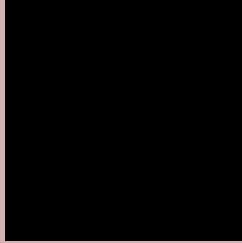
Any Text WCAG AA ✓ Pass

Large Text (above 18pt) WCAG AAA ✓ Pass

Any Text WCAG AAA ✓ Pass

If you want to check with other color combinations, try the [Color Contrast Checker](#).

Hex D1B2B5 Background



This preview shows how black text looks on a background with the Hex color D1B2B5.

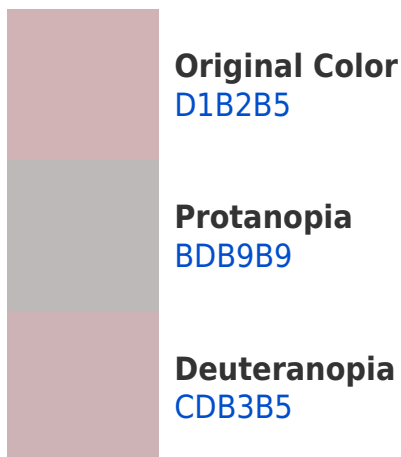


This preview shows how white text looks on a background with the Hex color D1B2B5.

Color Blindness Simulation

Color vision deficiency is a very complex topic, and I could not describe the different causes any better than Wikipedia does, so if you want to learn more, you should check out their [article about color blindness](#).

Dichromacy





Tritanopia
D2B1BE

Trichromacy



Original Color
D1B2B5

Protanomaly
C4B6B8

Deuteranomaly
CEB3B5

Tritanomaly
D2B1BB

Monochromacy



Original Color
D1B2B5

Achromatopsia
BCBCBC

Achromatomaly
C4B8B9

CSS Examples

Text

The CSS property to change the color of the text to Hex D1B2B5 is called "color". The color property can be set on classes, ids or directly on the HTML element.

This example shows how text in the color #D1B2B5 looks like.

```
.text, #text, p{  
    color:#D1B2B5  
}
```

If you want to add a text shadow in that color use the text-shadow property, you can generate a text shadow directly with our [CSS Text Shadow Generator](#).

Here you see how black text with a 4 pixel #D1B2B5 colored shadow looks like.

```
.shadow{ text-shadow: 4px 4px 2px #D1B2B5
}
```

Border

The CSS property to change the border of an element to Hex D1B2B5 is called "border". The border property can be set on classes, ids or directly on the HTML element.

This example shows the color as border, it can be applied via the CSS property "border" or "border-color".

```
.border, #border, table{ border:4px solid
#D1B2B5 }
```

If only the border color should be changed use the property `border-color`.

```
.border{ border-color:#D1B2B5 }
```

If you want to add a box shadow in that color use:

Here you see how a box with a 4 pixel #D1B2B5 colored shadow looks like.

```
.boxshadow{ -moz-box-shadow:4px 4px 4px  
4px #D1B2B5; -webkit-box-shadow:4px 4px  
4px 4px #D1B2B5; box-shadow:4px 4px 4px  
4px #D1B2B5 }
```

Background

The CSS property to change the background color of an element to Hex D1B2B5 is called "background". The background property can be set on classes, ids or directly on the HTML element.

```
.background, #background, body{  
background:#D1B2B5 }
```

If only the background color should be changed can be used:

```
.background{ background-color:#D1B2B5 }
```

This example shows the color as background, it is applied via the CSS property "background".

To optimize and compress your CSS code, you can use our [online CSS compressor and optimizer](#) based on csstidy. If you want to create a linear or radial gradient as background or border, check our [CSS Gradient Generator](#).

Hey! You found this booklet interesting? Support Converting Colors with the new Membership Option!

The pro membership hides all ads, plus gives you double the colors in the color bucket, and more awesome pro features!

[Learn more, Memberships starting at \\$2.50/m!](#)

**Follow me
on Twitter!**

@ConvertingColor