

Converting Colors

Hex(D1B5AB)

Have a look what the booklet for
Hex(D1B5AB) contains.

Hex(D1B5AB)	3
<i>Conversions</i>	4
<i>Details</i>	6
<i>Harmonies</i>	11
<i>Previews</i>	23
<i>Color Blindness Simulation</i>	26
<i>CSS Examples</i>	29

Color

Hex(D1B5AB)

Conversions

Conversions Part 1

Format	Color
Hex	D1B5AB
RGB	209, 181, 171
RGB Percent	82%, 71%, 67%
CMY	0.1804, 0.2902, 0.3294
CMYK	0.00, 0.13, 0.18, 0.18
HSL	16°, 29%, 75%
HSV	16°, 18%, 82%
XYZ	50.1691, 49.5433, 45.4467
YIQ	188.2320, 19.8980, 2.8260

Conversions

Conversions Part 2

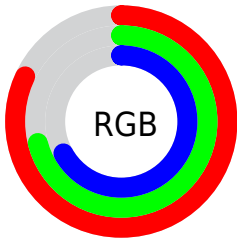
Format	Color
R _Y B	209, 185, 171
Decimal	13743531
CIE Lab	75.79, 8.44, 8.79
CIE LCh	76, 12.187, 46.148
Yxy	49.5433, 0.3456, 0.3413
Android (android.graphics.Color)	4291933611 (0xFFD1B5AB)
YUV	188.2320, -8.4954, 18.2135
Hunter-Lab	70.3870, 4.0504, 10.9892

Details

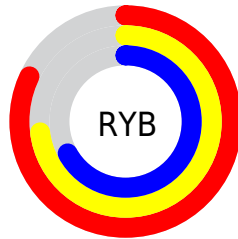
The Hex color **D1B5AB** is a light color, and the websafe version is hex **CC9999**. A complement of this color would be **ABC7D1**, and the grayscale version is **BCBCBC**.

A 20% lighter version of the original color is **FFEDE2**, and **9A8077** is the 20% darker color. If you saturate the color by 10%, you get **D1A696**, and if you desaturate by 10%, it is **D1C4C0**.

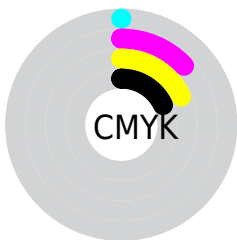
Distribution



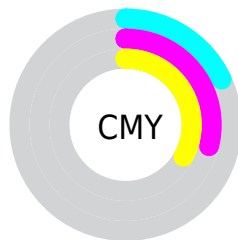
- Red (82%)
- Green (71%)
- Blue (67%)



- Red (82%)
- Yellow (73%)
- Blue (67%)



- Cyan (0%)
- Magenta (13%)
- Yellow (18%)
- Black (18%)



- Cyan (18%)
- Magenta (29%)
- Yellow (33%)

Brightness & Saturation Gradients

These gradients show how the Hex color D1B5AB changes by changing the brightness by 10 percent. The first figure shows a shift by +10% for each color and the second figure -10%.

Similar to the brightness gradients but the following saturation gradients show a change of the Hex color D1B5AB by changing the saturation by 10% instead.

 D1B5AB

 D1B5AB

FFFFFF

 B59A90

 FFEDE2

 9A8077

 80675E

 664F47

 4E3830

 37231B

 220D00

 000000

 D1B5AB

 D1B5AB

 D1A696

 D1C4C0

 D19681

 D1D4D5

 D1876C

 D1E3EA

 D17757

 D1F3FF

 D16842

 D1FFFF

 D1592E

 D14919

 D13A04

 D13700

Harmonies

Analogous

The Analogous color harmony consists of three colors that are next to each other on the color wheel.



D3B3B5



D1B5AB



C9B8A5

Triad

The Triadic color harmony groups three colors that are evenly spaced from another and form a triangle on the color wheel.



D1B5AB



A5C1B5



B7BAD0

Complementary

The Complementary color scheme is a pair of colors which are on the opposite of each other on the color wheel.



D1B5AB



ABC7D1

Split Complementary

Split-complementary colors differ from the complementary color scheme. The scheme consists of three colors, the original color and two neighbors of the complement color.



A9BDD0



D1B5AB



9FC1C1

Square

The Square scheme is like the rectangle color scheme, but the four colors are evenly spaced on the color wheel.



D1B5AB



B0BFAB



A0C0CB



C4B6CA

Rectangle

The Rectangle color scheme consists of four colors that form a rectangle on the color wheel.



D1B5AB



C2BBA5



A0C0CB



B2BBD1

Sweetspot

The Sweet Spot groups the original color and five complimentary colors.



D1B5AB



FFF6F2



D1ABC8



807A78



000000



808080

Same Dimension

The Same Dimension uses a secret algorithm to generate beautiful new colors.



D1B5AB



FFD6C7



D1C8AB



69615E



A82C00



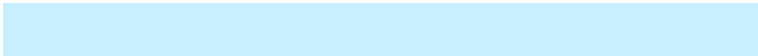
290B00

Inverse Universe

The Inverse Universe completely reimagines the original color for something new.



ABC7D1



C7F0FF



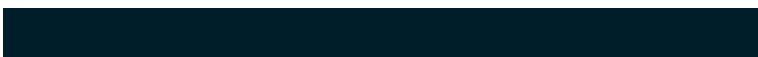
ABB5D1



5E6669



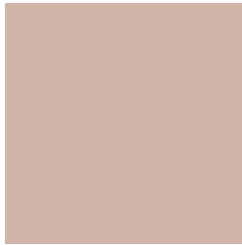
007CA8



001E29

Previews

White Background



This preview shows how the Hex color D1B5AB looks on a white background.

Color Contrast Check

Large Text (above 18pt) WCAG AA × Fail

Any Text WCAG AA × Fail

Large Text (above 18pt) WCAG AAA × Fail

Any Text WCAG AAA × Fail

Black Background



This preview shows how the Hex color D1B5AB looks on a black background.

Color Contrast Check

Large Text (above 18pt) WCAG AA ✓ Pass

Any Text WCAG AA ✓ Pass

Large Text (above 18pt) WCAG AAA ✓ Pass

Any Text WCAG AAA ✓ Pass

If you want to check with other color combinations, try the [Color Contrast Checker](#).

Hex D1B5AB Background



This preview shows how black text looks on a background with the Hex color D1B5AB.

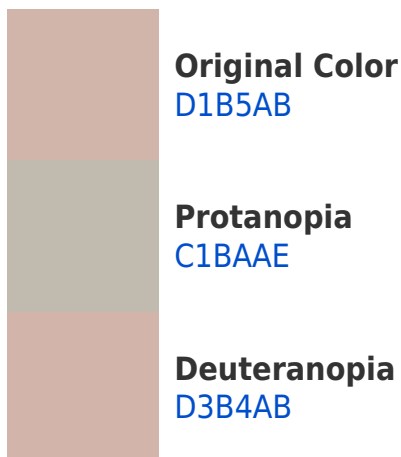


This preview shows how white text looks on a background with the Hex color D1B5AB.

Color Blindness Simulation

Color vision deficiency is a very complex topic, and I could not describe the different causes any better than Wikipedia does, so if you want to learn more, you should check out their [article about color blindness](#).

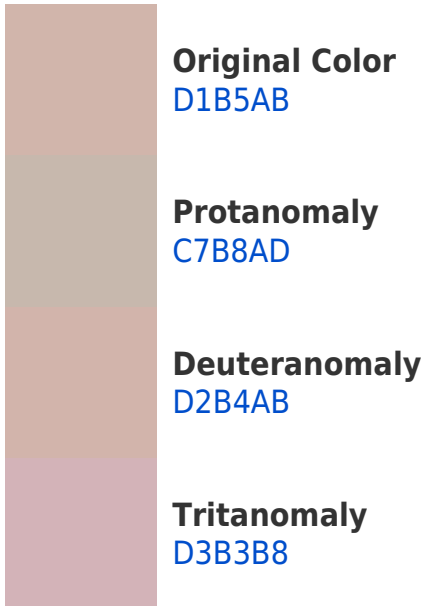
Dichromacy



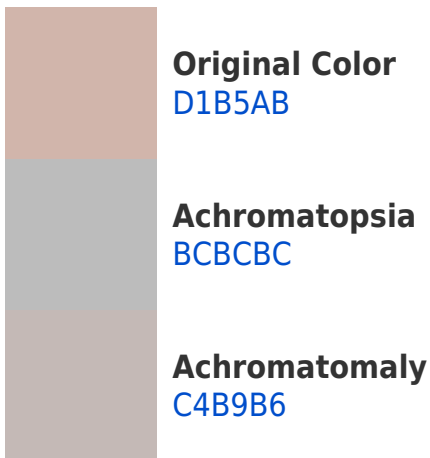


Tritanopia
D4B2C0

Trichromacy



Monochromacy



CSS Examples

Text

The CSS property to change the color of the text to Hex D1B5AB is called "color". The color property can be set on classes, ids or directly on the HTML element.

This example shows how text in the color #D1B5AB looks like.

```
.text, #text, p{  
    color:#D1B5AB  
}
```

If you want to add a text shadow in that color use the text-shadow property, you can generate a text shadow directly with our [CSS Text Shadow Generator](#).

Here you see how black text with a 4 pixel #D1B5AB colored shadow looks like.

```
.shadow{ text-shadow: 4px 4px 2px #D1B5AB
}
```

Border

The CSS property to change the border of an element to Hex D1B5AB is called "border". The border property can be set on classes, ids or directly on the HTML element.

This example shows the color as border, it can be applied via the CSS property "border" or "border-color".

```
.border, #border, table{ border:4px solid
#D1B5AB }
```

If only the border color should be changed use the property `border-color`.

```
.border{ border-color:#D1B5AB }
```

If you want to add a box shadow in that color use:

Here you see how a box with a 4 pixel #D1B5AB colored shadow looks like.

```
.boxshadow{ -moz-box-shadow:4px 4px 4px  
4px #D1B5AB; -webkit-box-shadow:4px 4px  
4px 4px #D1B5AB; box-shadow:4px 4px 4px  
4px #D1B5AB }
```

Background

The CSS property to change the background color of an element to Hex D1B5AB is called "background". The background property can be set on classes, ids or directly on the HTML element.

```
.background, #background, body{  
background:#D1B5AB }
```

If only the background color should be changed can be used:

```
.background{ background-color:#D1B5AB }
```

This example shows the color as background, it is applied via the CSS property "background".

To optimize and compress your CSS code, you can use our [online CSS compressor and optimizer](#) based on csstidy. If you want to create a linear or radial gradient as background or border, check our [CSS Gradient Generator](#).

Hey! You found this booklet interesting? Support Converting Colors with the new Membership Option!

The pro membership hides all ads, plus gives you double the colors in the color bucket, and more awesome pro features!

[Learn more, Memberships starting at \\$2.50/m!](#)

**Follow me
on Twitter!**

@ConvertingColor