

Converting Colors

Hex(D1B8B4)

Have a look what the booklet for
Hex(D1B8B4) contains.

Hex(D1B8B4)	3
<i>Conversions</i>	4
<i>Details</i>	6
<i>Harmonies</i>	11
<i>Previews</i>	23
<i>Color Blindness Simulation</i>	26
<i>CSS Examples</i>	29

Color

Hex(D1B8B4)

Conversions

Conversions Part 1

Format	Color
Hex	D1B8B4
RGB	209, 184, 180
RGB Percent	82%, 72%, 71%
CMY	0.1804, 0.2784, 0.2941
CMYK	0.00, 0.12, 0.14, 0.18
HSL	8°, 24%, 76%
HSV	8°, 14%, 82%
XYZ	51.6732, 51.1316, 50.3259
YIQ	191.0190, 16.1840, 4.0560

Conversions

Conversions Part 2

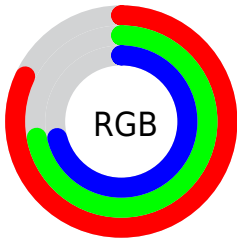
Format	Color
R _Y B	209, 185, 180
Decimal	13744308
CIE Lab	76.76, 8.26, 5.29
CIE LCh	77, 9.810, 32.661
Yxy	51.1316, 0.3374, 0.3339
Android (android.graphics.Color)	4291934388 (0xFFD1B8B4)
YUV	191.0190, -5.4324, 15.7693
Hunter-Lab	71.5063, 3.8548, 8.3263

Details

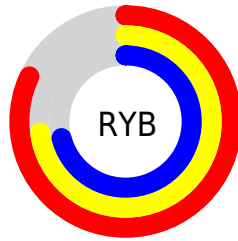
The Hex color **D1B8B4** is a light color, and the websafe version is hex **CCCCCC**. A complement of this color would be **B4CDD1**, and the grayscale version is **BFBFBF**.

A 20% lighter version of the original color is **FFF0EC**, and **9A837F** is the 20% darker color. If you saturate the color by 10%, you get **D1A69F**, and if you desaturate by 10%, it is **D1CAC9**.

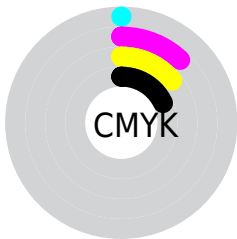
Distribution



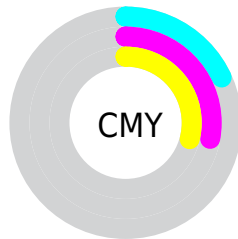
- Red (82%)
- Green (72%)
- Blue (71%)



- Red (82%)
- Yellow (73%)
- Blue (71%)



- Cyan (0%)
- Magenta (12%)
- Yellow (14%)
- Black (18%)



- Cyan (18%)
- Magenta (28%)
- Yellow (29%)

Brightness & Saturation Gradients

These gradients show how the Hex color D1B8B4 changes by changing the brightness by 10 percent. The first figure shows a shift by +10% for each color and the second figure -10%.

Similar to the brightness gradients but the following saturation gradients show a change of the Hex color D1B8B4 by changing the saturation by 10% instead.

 D1B8B4

 D1B8B4

FFFFFF

 B59D99

 FFF0EC

 9A837F

 806A66

 67524E

 4F3B38

 372522

 22100C

 000000

 D1B8B4

 D1B8B4

 D1A69F

 D1CAC9

 D1948A

 D1DCDE

 D18275

 D1EEF3

 D17060

 D1FFFF

 D15E4C

 D14C37

 D13A22

 D1280D

 D11D00

Harmonies

Analogous

The Analogous color harmony consists of three colors that are next to each other on the color wheel.



D0B7BD



D1B8B4



CDBAAE

Triad

The Triadic color harmony groups three colors that are evenly spaced from another and form a triangle on the color wheel.



D1B8B4



B0C2B5



B5BECF

Complementary

The Complementary color scheme is a pair of colors which are on the opposite of each other on the color wheel.



D1B8B4



B4CDD1

Split Complementary

Split-complementary colors differ from the complementary color scheme. The scheme consists of three colors, the original color and two neighbors of the complement color.



ACC1CD



D1B8B4



A9C3BE

Square

The Square scheme is like the rectangle color scheme, but the four colors are evenly spaced on the color wheel.



D1B8B4



BAC0AE



A7C2C7



C0BBCD

Rectangle

The Rectangle color scheme consists of four colors that form a rectangle on the color wheel.



D1B8B4



C7BCAC



A7C2C7



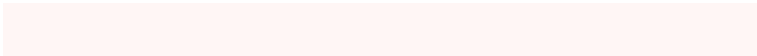
B2BFCF

Sweetspot

The Sweet Spot groups the original color and five complimentary colors.



D1B8B4



FFF6F5



D1B4CD



807A79



000000



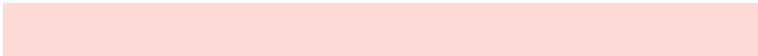
808080

Same Dimension

The Same Dimension uses a secret algorithm to generate beautiful new colors.



D1B8B4



FFDAD4



D1C6B4



69605E



A81700



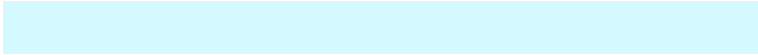
290600

Inverse Universe

The Inverse Universe completely reimagines the original color for something new.



B4CDD1



D4F9FF



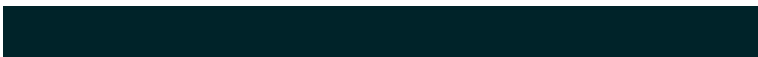
B4BFD1



5E6769



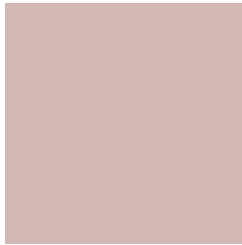
0091A8



002329

Previews

White Background



This preview shows how the Hex color D1B8B4 looks on a white background.

Color Contrast Check

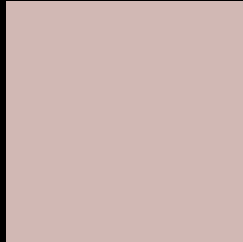
Large Text (above 18pt) WCAG AA × Fail

Any Text WCAG AA × Fail

Large Text (above 18pt) WCAG AAA × Fail

Any Text WCAG AAA × Fail

Black Background



This preview shows how the Hex color D1B8B4 looks on a black background.

Color Contrast Check

Large Text (above 18pt) WCAG AA ✓ Pass

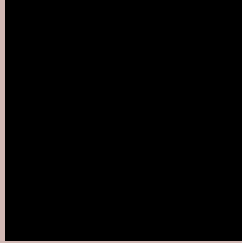
Any Text WCAG AA ✓ Pass

Large Text (above 18pt) WCAG AAA ✓ Pass

Any Text WCAG AAA ✓ Pass

If you want to check with other color combinations, try the [Color Contrast Checker](#).

Hex D1B8B4 Background



This preview shows how black text looks on a background with the Hex color D1B8B4.



This preview shows how white text looks on a background with the Hex color D1B8B4.

Color Blindness Simulation

Color vision deficiency is a very complex topic, and I could not describe the different causes any better than Wikipedia does, so if you want to learn more, you should check out their [article about color blindness](#).

Dichromacy



Original Color
D1B8B4

Protanopia
C3BDB7

Deuteranopia
D3B7B4



Tritanopia
D3B6C4

Trichromacy



Original Color
D1B8B4

Protanomaly
C8BBB6

Deuteranomaly
D2B7B4

Tritanomaly
D2B7BE

Monochromacy



Original Color
D1B8B4

Achromatopsia
BFBFBF

Achromatomaly
C6BCBB

CSS Examples

Text

The CSS property to change the color of the text to Hex D1B8B4 is called "color". The color property can be set on classes, ids or directly on the HTML element.

This example shows how text in the color #D1B8B4 looks like.

```
.text, #text, p{  
    color:#D1B8B4  
}
```

If you want to add a text shadow in that color use the text-shadow property, you can generate a text shadow directly with our [CSS Text Shadow Generator](#).

Here you see how black text with a 4 pixel #D1B8B4 colored shadow looks like.

```
.shadow{ text-shadow: 4px 4px 2px #D1B8B4
}
```

Border

The CSS property to change the border of an element to Hex D1B8B4 is called "border". The border property can be set on classes, ids or directly on the HTML element.

This example shows the color as border, it can be applied via the CSS property "border" or "border-color".

```
.border, #border, table{ border:4px solid
#D1B8B4 }
```

If only the border color should be changed use the property `border-color`.

```
.border{ border-color:#D1B8B4 }
```

If you want to add a box shadow in that color use:

Here you see how a box with a 4 pixel #D1B8B4 colored shadow looks like.

```
.boxshadow{ -moz-box-shadow:4px 4px 4px  
4px #D1B8B4; -webkit-box-shadow:4px 4px  
4px 4px #D1B8B4; box-shadow:4px 4px 4px  
4px #D1B8B4 }
```

Background

The CSS property to change the background color of an element to Hex D1B8B4 is called "background". The background property can be set on classes, ids or directly on the HTML element.

```
.background, #background, body{  
background:#D1B8B4 }
```

If only the background color should be changed can be used:

```
.background{ background-color:#D1B8B4 }
```

This example shows the color as background, it is applied via the CSS property "background".

To optimize and compress your CSS code, you can use our [online CSS compressor and optimizer](#) based on csstidy. If you want to create a linear or radial gradient as background or border, check our [CSS Gradient Generator](#).

Hey! You found this booklet interesting? Support Converting Colors with the new Membership Option!

The pro membership hides all ads, plus gives you double the colors in the color bucket, and more awesome pro features!

[Learn more, Memberships starting at \\$2.50/m!](#)

**Follow me
on Twitter!**

@ConvertingColor