

Converting Colors

Hex(D1B9B4)

Have a look what the booklet for
Hex(D1B9B4) contains.

Hex(D1B9B4)	3
<i>Conversions</i>	4
<i>Details</i>	6
<i>Harmonies</i>	11
<i>Previews</i>	23
<i>Color Blindness Simulation</i>	26
<i>CSS Examples</i>	29

Color

Hex(D1B9B4)

Conversions

Conversions Part 1

Format	Color
Hex	D1B9B4
RGB	209, 185, 180
RGB Percent	82%, 73%, 71%
CMY	0.1804, 0.2745, 0.2941
CMYK	0.00, 0.11, 0.14, 0.18
HSL	10°, 24%, 76%
HSV	10°, 14%, 82%
XYZ	51.8817, 51.5485, 50.3954
YIQ	191.6060, 15.9090, 3.5330

Conversions

Conversions Part 2

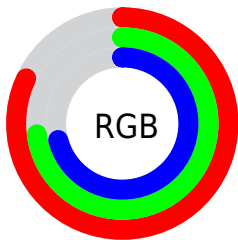
Format	Color
R _Y B	209, 186, 180
Decimal	13744564
CIE Lab	77.01, 7.72, 5.66
CIE LCh	77, 9.573, 36.219
Yxy	51.5485, 0.3373, 0.3351
Android (android.graphics.Color)	4291934644 (0xFFD1B9B4)
YUV	191.6060, -5.7218, 15.2545
Hunter-Lab	71.7973, 3.3412, 8.6417

Details

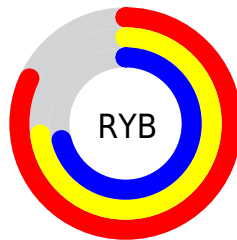
The Hex color **D1B9B4** is a light color, and the websafe version is hex **CCCCCC**. A complement of this color would be **B4CCD1**, and the grayscale version is **C0C0C0**.

A 20% lighter version of the original color is **FFF1EC**, and **9A847F** is the 20% darker color. If you saturate the color by 10%, you get **D1A89F**, and if you desaturate by 10%, it is **D1CAC9**.

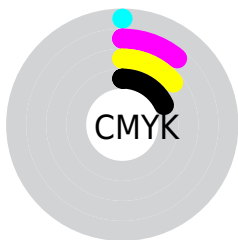
Distribution



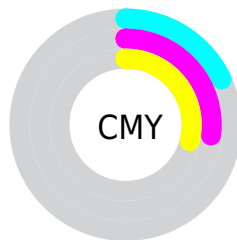
- Red (82%)
- Green (73%)
- Blue (71%)



- Red (82%)
- Yellow (73%)
- Blue (71%)



- Cyan (0%)
- Magenta (11%)
- Yellow (14%)
- Black (18%)



- Cyan (18%)
- Magenta (27%)
- Yellow (29%)

Brightness & Saturation Gradients

These gradients show how the Hex color D1B9B4 changes by changing the brightness by 10 percent. The first figure shows a shift by +10% for each color and the second figure -10%.

Similar to the brightness gradients but the following saturation gradients show a change of the Hex color D1B9B4 by changing the saturation by 10% instead.

 D1B9B4

 D1B9B4

FFFFFF

 B59E99

 FFF1EC

 9A847F

 806B66

 67534E

 4F3B38

 372622

 22110C

 000000

 D1B9B4

 D1B9B4

 D1A89F

 D1CAC9

 D1968A

 D1DCDE

 D18575

 D1EDF3

 D17460

 D1FEFF

 D1634C

 D1FFFF

 D15137

 D14022

 D12F0D

 D12400

Harmonies

Analogous

The Analogous color harmony consists of three colors that are next to each other on the color wheel.



D1B8BD



D1B9B4



CCBBAE

Triad

The Triadic color harmony groups three colors that are evenly spaced from another and form a triangle on the color wheel.



D1B9B4



B0C3B7



B7BED0

Complementary

The Complementary color scheme is a pair of colors which are on the opposite of each other on the color wheel.



D1B9B4



B4CCD1

Split Complementary

Split-complementary colors differ from the complementary color scheme. The scheme consists of three colors, the original color and two neighbors of the complement color.



AEC1CE



D1B9B4



AAC4C0

Square

The Square scheme is like the rectangle color scheme, but the four colors are evenly spaced on the color wheel.



D1B9B4



B9C1B0



A9C3C8



C2BBCC

Rectangle

The Rectangle color scheme consists of four colors that form a rectangle on the color wheel.



D1B9B4



C7BDAD



A9C3C8



B4BFD0

Sweetspot

The Sweet Spot groups the original color and five complimentary colors.



D1B9B4



FFF7F5



D1B4CC



807A79



000000



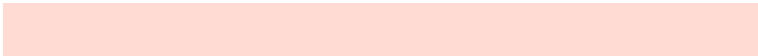
808080

Same Dimension

The Same Dimension uses a secret algorithm to generate beautiful new colors.



D1B9B4



FFDBD4



D1C7B4



69605E



A81D00



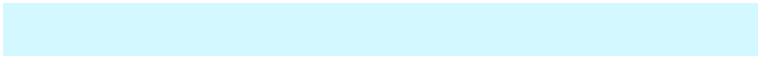
290700

Inverse Universe

The Inverse Universe completely reimagines the original color for something new.



B4CCD1



D4F8FF



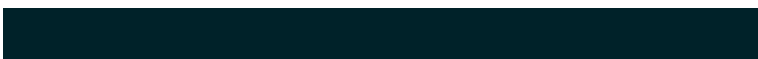
B4BED1



5E6769



008BA8



002229

Previews

White Background



This preview shows how the Hex color D1B9B4 looks on a white background.

Color Contrast Check

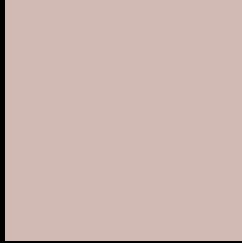
Large Text (above 18pt) WCAG AA × Fail

Any Text WCAG AA × Fail

Large Text (above 18pt) WCAG AAA × Fail

Any Text WCAG AAA × Fail

Black Background



This preview shows how the Hex color D1B9B4 looks on a black background.

Color Contrast Check

Large Text (above 18pt) WCAG AA ✓ Pass

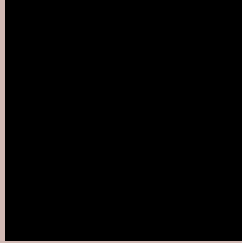
Any Text WCAG AA ✓ Pass

Large Text (above 18pt) WCAG AAA ✓ Pass

Any Text WCAG AAA ✓ Pass

If you want to check with other color combinations, try the [Color Contrast Checker](#).

Hex D1B9B4 Background



This preview shows how black text looks on a background with the Hex color D1B9B4.



This preview shows how white text looks on a background with the Hex color D1B9B4.

Color Blindness Simulation

Color vision deficiency is a very complex topic, and I could not describe the different causes any better than Wikipedia does, so if you want to learn more, you should check out their [article about color blindness](#).

Dichromacy





Tritanopia
D3B6C5

Trichromacy



Original Color
D1B9B4

Protanomaly
C8BCB5

Deuteranomaly
D3B8B4

Tritanomaly
D2B7BF

Monochromacy



Original Color
D1B9B4

Achromatopsia
C0C0C0

Achromatomaly
C6BDBC

CSS Examples

Text

The CSS property to change the color of the text to Hex D1B9B4 is called "color". The color property can be set on classes, ids or directly on the HTML element.

This example shows how text in the color #D1B9B4 looks like.

```
.text, #text, p{  
    color:#D1B9B4  
}
```

If you want to add a text shadow in that color use the text-shadow property, you can generate a text shadow directly with our [CSS Text Shadow Generator](#).

Here you see how black text with a 4 pixel #D1B9B4 colored shadow looks like.

```
.shadow{ text-shadow: 4px 4px 2px #D1B9B4
}
```

Border

The CSS property to change the border of an element to Hex D1B9B4 is called "border". The border property can be set on classes, ids or directly on the HTML element.

This example shows the color as border, it can be applied via the CSS property "border" or "border-color".

```
.border, #border, table{ border:4px solid
#D1B9B4 }
```

If only the border color should be changed use the property `border-color`.

```
.border{ border-color:#D1B9B4 }
```

If you want to add a box shadow in that color use:

Here you see how a box with a 4 pixel #D1B9B4 colored shadow looks like.

```
.boxshadow{ -moz-box-shadow:4px 4px 4px  
4px #D1B9B4; -webkit-box-shadow:4px 4px  
4px 4px #D1B9B4; box-shadow:4px 4px 4px  
4px #D1B9B4 }
```

Background

The CSS property to change the background color of an element to Hex D1B9B4 is called "background". The background property can be set on classes, ids or directly on the HTML element.

```
.background, #background, body{  
background:#D1B9B4 }
```

If only the background color should be changed can be used:

```
.background{ background-color:#D1B9B4 }
```

This example shows the color as background, it is applied via the CSS property "background".

To optimize and compress your CSS code, you can use our [online CSS compressor and optimizer](#) based on csstidy. If you want to create a linear or radial gradient as background or border, check our [CSS Gradient Generator](#).

Hey! You found this booklet interesting? Support Converting Colors with the new Membership Option!

The pro membership hides all ads, plus gives you double the colors in the color bucket, and more awesome pro features!

[Learn more, Memberships starting at \\$2.50/m!](#)

**Follow me
on Twitter!**

@ConvertingColor