

Converting Colors

Hex(D1BDAD)

Have a look what the booklet for
Hex(D1BDAD) contains.

Hex(D1BDAD)	3
<i>Conversions</i>	4
<i>Details</i>	6
<i>Harmonies</i>	11
<i>Previews</i>	23
<i>Color Blindness Simulation</i>	26
<i>CSS Examples</i>	29

Color

Hex(D1BDAD)

Conversions

Conversions Part 1

Format	Color
Hex	D1BDAD
RGB	209, 189, 173
RGB Percent	82%, 74%, 68%
CMY	0.1804, 0.2588, 0.3216
CMYK	0.00, 0.10, 0.17, 0.18
HSL	27°, 28%, 75%
HSV	27°, 17%, 82%
XYZ	52.0349, 52.9676, 47.0164
YIQ	193.1560, 17.0560, -0.7360

Conversions

Conversions Part 2

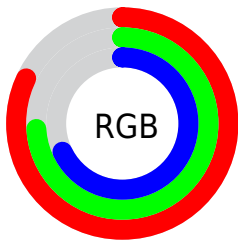
Format	Color
R _Y B	209, 202, 173
Decimal	13745581
CIE Lab	77.86, 4.48, 10.65
CIE LCh	78, 11.556, 67.195
Yxy	52.9676, 0.3423, 0.3484
Android (android.graphics.Color)	4291935661 (0xFFD1BDAD)
YUV	193.1560, -9.9369, 13.8952
Hunter-Lab	72.7789, 0.2597, 12.6428

Details

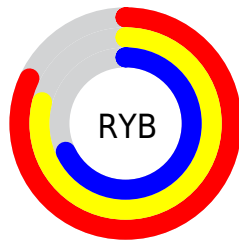
The Hex color **D1BDAD** is a light color, and the websafe version is hex **CCCCCC**. A complement of this color would be **ADC1D1**, and the grayscale version is **C1C1C1**.

A 20% lighter version of the original color is **FFF5E4**, and **9A8879** is the 20% darker color. If you saturate the color by 10%, you get **D1B198**, and if you desaturate by 10%, it is **D1C9C2**.

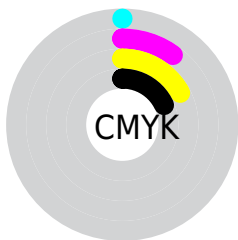
Distribution



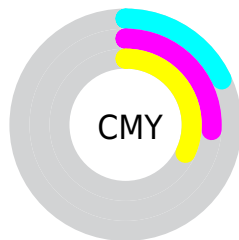
- Red (82%)
- Green (74%)
- Blue (68%)



- Red (82%)
- Yellow (79%)
- Blue (68%)



- Cyan (0%)
- Magenta (10%)
- Yellow (17%)
- Black (18%)



- Cyan (18%)
- Magenta (26%)
- Yellow (32%)

Brightness & Saturation Gradients

These gradients show how the Hex color D1BDAD changes by changing the brightness by 10 percent. The first figure shows a shift by +10% for each color and the second figure -10%.

Similar to the brightness gradients but the following saturation gradients show a change of the Hex color D1BDAD by changing the saturation by 10% instead.

 D1BDAD

 D1BDAD

FFFFFF

 B5A292

 FFF5E4

 9A8879

 806E60

 675648

 4E3F32

 37291D

 221503

 000000

 D1BDAD

 D1BDAD

 D1B198

 D1C9C2

 D1A683

 D1D4D7

 D19A6E

 D1E0EC

 D18F59

 D1EBFF

 D18345

 D1F7FF

 D17730

 D1FFFF

 D16C1B

 D16006

 D15D00

Harmonies

Analogous

The Analogous color harmony consists of three colors that are next to each other on the color wheel.



D7BAB4



D1BDAD



C7C1AB

Triad

The Triadic color harmony groups three colors that are evenly spaced from another and form a triangle on the color wheel.



D1BDAD



A7C7C3



C6BDD2

Complementary

The Complementary color scheme is a pair of colors which are on the opposite of each other on the color wheel.



D1BDAD



ADC1D1

Split Complementary

Split-complementary colors differ from the complementary color scheme. The scheme consists of three colors, the original color and two neighbors of the complement color.



B8C0D5



D1BDAD



A6C6CD

Square

The Square scheme is like the rectangle color scheme, but the four colors are evenly spaced on the color wheel.



D1BDAD



AFC6B8



ADC4D4



D1BAC9

Rectangle

The Rectangle color scheme consists of four colors that form a rectangle on the color wheel.



D1BDAD



BFC3AD



ADC4D4



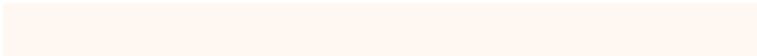
C1BED3

Sweetspot

The Sweet Spot groups the original color and five complimentary colors.



D1BDAD



FFF8F2



D1ADC1



807B78



000000



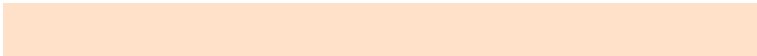
808080

Same Dimension

The Same Dimension uses a secret algorithm to generate beautiful new colors.



D1BDAD



FFE1C9



D1CFAD



69635E



A84B00



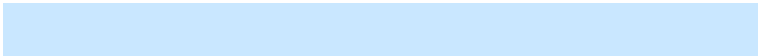
291200

Inverse Universe

The Inverse Universe completely reimagines the original color for something new.



ADC1D1



C9E7FF



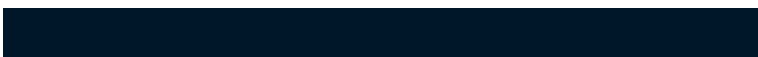
ADAFD1



5E6469



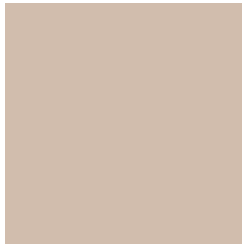
005DA8



001729

Previews

White Background



This preview shows how the Hex color D1BDAD looks on a white background.

Color Contrast Check

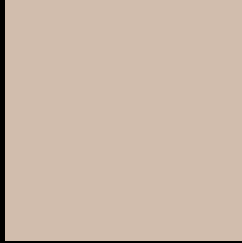
Large Text (above 18pt) WCAG AA × Fail

Any Text WCAG AA × Fail

Large Text (above 18pt) WCAG AAA × Fail

Any Text WCAG AAA × Fail

Black Background



This preview shows how the Hex color D1BDAD looks on a black background.

Color Contrast Check

Large Text (above 18pt) WCAG AA ✓ Pass

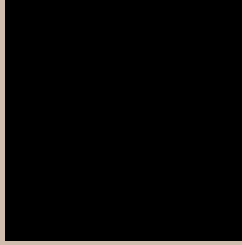
Any Text WCAG AA ✓ Pass

Large Text (above 18pt) WCAG AAA ✓ Pass

Any Text WCAG AAA ✓ Pass

If you want to check with other color combinations, try the [Color Contrast Checker](#).

Hex D1BDAD Background



This preview shows how black text looks on a background with the Hex color D1BDAD.

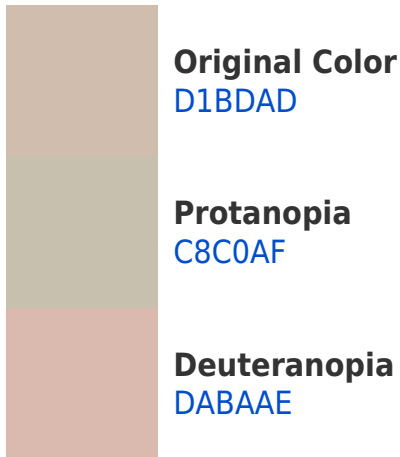


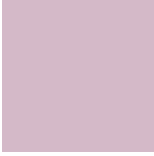
This preview shows how white text looks on a background with the Hex color D1BDAD.

Color Blindness Simulation

Color vision deficiency is a very complex topic, and I could not describe the different causes any better than Wikipedia does, so if you want to learn more, you should check out their [article about color blindness](#).

Dichromacy





Tritanopia
D4B9C8

Trichromacy



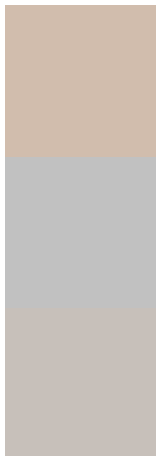
Original Color
D1BDAD

Protanomaly
CBBFAE

Deuteranomaly
D7BBAE

Tritanomaly
D3BABE

Monochromacy



Original Color
D1BDAD

Achromatopsia
C1C1C1

Achromatomaly
C7C0BA

CSS Examples

Text

The CSS property to change the color of the text to Hex D1BDAD is called "color". The color property can be set on classes, ids or directly on the HTML element.

This example shows how text in the color #D1BDAD looks like.

```
.text, #text, p{  
    color:#D1BDAD  
}
```

If you want to add a text shadow in that color use the text-shadow property, you can generate a text shadow directly with our [CSS Text Shadow Generator](#).

Here you see how black text with a 4 pixel #D1BDAD colored shadow looks like.

```
.shadow{ text-shadow: 4px 4px 2px #D1BDAD }  
}
```

Border

The CSS property to change the border of an element to Hex D1BDAD is called "border". The border property can be set on classes, ids or directly on the HTML element.

This example shows the color as border, it can be applied via the CSS property "border" or "border-color".

```
.border, #border, table{ border:4px solid #D1BDAD }  
}
```

If only the border color should be changed use the property `border-color`.

```
.border{ border-color:#D1BDAD }
```

If you want to add a box shadow in that color use:

Here you see how a box with a 4 pixel #D1BDAD colored shadow looks like.

```
.boxshadow{ -moz-box-shadow:4px 4px 4px  
4px #D1BDAD; -webkit-box-shadow:4px 4px  
4px 4px #D1BDAD; box-shadow:4px 4px 4px  
4px #D1BDAD }
```

Background

The CSS property to change the background color of an element to Hex D1BDAD is called "background". The background property can be set on classes, ids or directly on the HTML element.

```
.background, #background, body{  
background:#D1BDAD }
```

If only the background color should be changed can be used:

```
.background{ background-color:#D1BDAD }
```

This example shows the color as background, it is applied via the CSS property "background".

To optimize and compress your CSS code, you can use our [online CSS compressor and optimizer](#) based on csstidy. If you want to create a linear or radial gradient as background or border, check our [CSS Gradient Generator](#).

Hey! You found this booklet interesting? Support Converting Colors with the new Membership Option!

The pro membership hides all ads, plus gives you double the colors in the color bucket, and more awesome pro features!

[Learn more, Memberships starting at \\$2.50/m!](#)

**Follow me
on Twitter!**

@ConvertingColor