

Converting Colors

Hex(D1BDBD)

Have a look what the booklet for
Hex(D1BDBD) contains.

Hex(D1BDBD)	3
<i>Conversions</i>	4
<i>Details</i>	6
<i>Harmonies</i>	11
<i>Previews</i>	23
<i>Color Blindness Simulation</i>	26
<i>CSS Examples</i>	29

Color

Hex(D1BDBD)

Conversions

Conversions Part 1

Format	Color
Hex	D1BDBD
RGB	209, 189, 189
RGB Percent	82%, 74%, 74%
CMY	0.1804, 0.2588, 0.2588
CMYK	0.00, 0.10, 0.10, 0.18
HSL	0°, 18%, 78%
HSV	0°, 10%, 82%
XYZ	53.6774, 53.6246, 55.6656
YIQ	194.9800, 11.9200, 4.2400

Conversions

Conversions Part 2

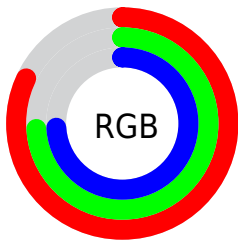
Format	Color
R _Y B	209, 189, 189
Decimal	13745597
CIE Lab	78.24, 7.07, 2.57
CIE LCh	78, 7.524, 19.940
Yxy	53.6246, 0.3294, 0.3291
Android (android.graphics.Color)	4291935677 (0xFFD1BDBD)
YUV	194.9800, -2.9481, 12.2955
Hunter-Lab	73.2288, 2.6916, 6.1903

Details

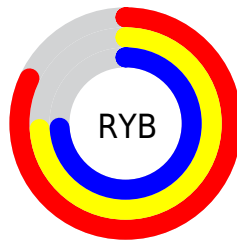
The Hex color **D1BDBD** is a light color, and the websafe version is hex **CCCCCC**. A complement of this color would be **BDD1D1**, and the grayscale version is **C3C3C3**.

A 20% lighter version of the original color is **FFF5F5**, and **9A8888** is the 20% darker color. If you saturate the color by 10%, you get **D1A8A8**, and if you desaturate by 10%, it is **D1D2D2**.

Distribution



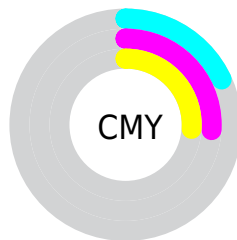
- Red (82%)
- Green (74%)
- Blue (74%)



- Red (82%)
- Yellow (74%)
- Blue (74%)



- Cyan (0%)
- Magenta (10%)
- Yellow (10%)
- Black (18%)



- Cyan (18%)
- Magenta (26%)
- Yellow (26%)

Brightness & Saturation Gradients

These gradients show how the Hex color D1BDBD changes by changing the brightness by 10 percent. The first figure shows a shift by +10% for each color and the second figure -10%.

Similar to the brightness gradients but the following saturation gradients show a change of the Hex color D1BDBD by changing the saturation by 10% instead.

 D1BDBD

FFFFFF

 FFF5F5

 D1BDBD

 B5A2A2

 9A8888

 806E6E

 675656

 4F3F3F

 382929

 221415

 000000

 D1BDBD

 D1BDBD

 D1A8A8

 D1D2D2

 D19393

 D1E7E7

 D17E7E

 D1FCFC

 D16969

 D1FFFF

 D15555

 D14040

 D12B2B

 D11616

 D10101

Harmonies

Analogous

The Analogous color harmony consists of three colors that are next to each other on the color wheel.



CFBDC4



D1BDBD



CFBEB7

Triad

The Triadic color harmony groups three colors that are evenly spaced from another and form a triangle on the color wheel.



D1BDBD



BAC4B8



B8C3CF

Complementary

The Complementary color scheme is a pair of colors which are on the opposite of each other on the color wheel.



D1BDBD



BDD1D1

Split Complementary

Split-complementary colors differ from the complementary color scheme. The scheme consists of three colors, the original color and two neighbors of the complement color.



B2C5CC



D1BDBD



B4C6BF

Square

The Square scheme is like the rectangle color scheme, but the four colors are evenly spaced on the color wheel.



D1BDBD



C2C2B4



B1C6C6



C0C0CF

Rectangle

The Rectangle color scheme consists of four colors that form a rectangle on the color wheel.



D1BDBD



CCBFB5



B1C6C6



B6C4CE

Sweetspot

The Sweet Spot groups the original color and five complimentary colors.



D1BDBD



FFF7F7



D1BDD1



807A7A



000000



808080

Same Dimension

The Same Dimension uses a secret algorithm to generate beautiful new colors.



D1BDBD



FFE3E3



D1C7BD



695E5E



A80000



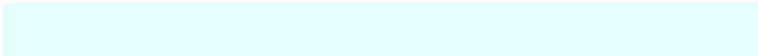
290000

Inverse Universe

The Inverse Universe completely reimagines the original color for something new.



BDD1D1



E3FFFF



BDC7D1



5E6969



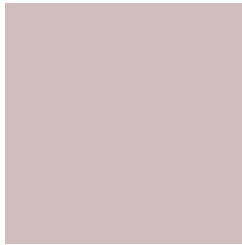
00A8A8



002929

Previews

White Background



This preview shows how the Hex color D1BDBD looks on a white background.

Color Contrast Check

Large Text (above 18pt) WCAG AA × Fail

Any Text WCAG AA × Fail

Large Text (above 18pt) WCAG AAA × Fail

Any Text WCAG AAA × Fail

Black Background



This preview shows how the Hex color D1BDBD looks on a black background.

Color Contrast Check

Large Text (above 18pt) WCAG AA ✓ Pass

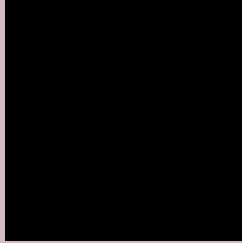
Any Text WCAG AA ✓ Pass

Large Text (above 18pt) WCAG AAA ✓ Pass

Any Text WCAG AAA ✓ Pass

If you want to check with other color combinations, try the [Color Contrast Checker](#).

Hex D1BDBD Background



This preview shows how black text looks on a background with the Hex color D1BDBD.



This preview shows how white text looks on a background with the Hex color D1BDBD.

Color Blindness Simulation

Color vision deficiency is a very complex topic, and I could not describe the different causes any better than Wikipedia does, so if you want to learn more, you should check out their [article about color blindness](#).

Dichromacy





Tritanopia
D3BBCA

Trichromacy



Original Color
D1BDBD

Protanomaly
CAC0BE

Deuteranomaly
D4BCBD

Tritanomaly
D2BCC5

Monochromacy



Original Color
D1BDBD

Achromatopsia
C3C3C3

Achromatomaly
C8C1C1

CSS Examples

Text

The CSS property to change the color of the text to Hex D1BDBD is called "color". The color property can be set on classes, ids or directly on the HTML element.

This example shows how text in the color #D1BDBD looks like.

```
.text, #text, p{  
  color:#D1BDBD  
}
```

If you want to add a text shadow in that color use the text-shadow property, you can generate a text shadow directly with our [CSS Text Shadow Generator](#).

Here you see how black text with a 4 pixel #D1BDBD colored shadow looks like.

```
.shadow{ text-shadow: 4px 4px 2px #D1BDBD
}
```

Border

The CSS property to change the border of an element to Hex D1BDBD is called "border". The border property can be set on classes, ids or directly on the HTML element.

This example shows the color as border, it can be applied via the CSS property "border" or "border-color".

```
.border, #border, table{ border:4px solid
#D1BDBD }
```

If only the border color should be changed use the property `border-color`.

```
.border{ border-color:#D1BDBD }
```

If you want to add a box shadow in that color use:

Here you see how a box with a 4 pixel #D1BDBD colored shadow looks like.

```
.boxshadow{ -moz-box-shadow:4px 4px 4px  
4px #D1BDBD; -webkit-box-shadow:4px 4px  
4px 4px #D1BDBD; box-shadow:4px 4px 4px  
4px #D1BDBD }
```

Background

The CSS property to change the background color of an element to Hex D1BDBD is called "background". The background property can be set on classes, ids or directly on the HTML element.

```
.background, #background, body{  
background:#D1BDBD }
```

If only the background color should be changed can be used:

```
.background{ background-color:#D1BDBD }
```

This example shows the color as background, it is applied via the CSS property "background".

To optimize and compress your CSS code, you can use our [online CSS compressor and optimizer](#) based on csstidy. If you want to create a linear or radial gradient as background or border, check our [CSS Gradient Generator](#).

Hey! You found this booklet interesting? Support Converting Colors with the new Membership Option!

The pro membership hides all ads, plus gives you double the colors in the color bucket, and more awesome pro features!

[Learn more, Memberships starting at \\$2.50/m!](#)

**Follow me
on Twitter!**

@ConvertingColor