

Converting Colors

Hex(D1BEB8)

Have a look what the booklet for
Hex(D1BEB8) contains.

Hex(D1BEB8)	3
<i>Conversions</i>	4
<i>Details</i>	6
<i>Harmonies</i>	11
<i>Previews</i>	23
<i>Color Blindness Simulation</i>	26
<i>CSS Examples</i>	29

Color

Hex(D1BEB8)

Conversions

Conversions Part 1

Format	Color
Hex	D1BEB8
RGB	209, 190, 184
RGB Percent	82%, 75%, 72%
CMY	0.1804, 0.2549, 0.2784
CMYK	0.00, 0.09, 0.12, 0.18
HSL	14°, 21%, 77%
HSV	14°, 12%, 82%
XYZ	53.3597, 53.8429, 52.9278
YIQ	194.9970, 13.2500, 2.1620

Conversions

Conversions Part 2

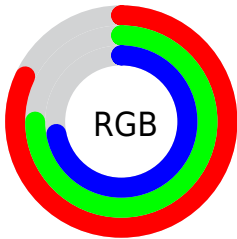
Format	Color
R _Y B	209, 192, 184
Decimal	13745848
CIE Lab	78.37, 5.70, 5.45
CIE LCh	78, 7.891, 43.701
Yxy	53.8429, 0.3332, 0.3362
Android (android.graphics.Color)	4291935928 (0xFFD1BEB8)
YUV	194.9970, -5.4215, 12.2806
Hunter-Lab	73.3777, 1.3927, 8.5982

Details

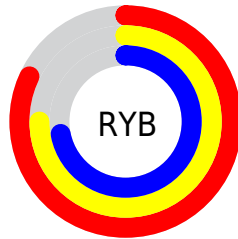
The Hex color **D1BEB8** is a light color, and the websafe version is hex **CCCCCC**. A complement of this color would be **B8CBD1**, and the grayscale version is **C3C3C3**.

A 20% lighter version of the original color is **FFF6F0**, and **9A8983** is the 20% darker color. If you saturate the color by 10%, you get **D1AEA3**, and if you desaturate by 10%, it is **D1CECD**.

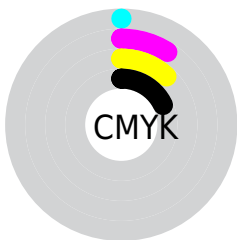
Distribution



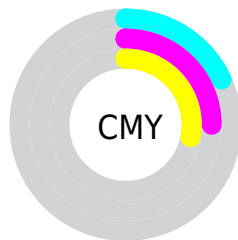
- Red (82%)
- Green (75%)
- Blue (72%)



- Red (82%)
- Yellow (75%)
- Blue (72%)



- Cyan (0%)
- Magenta (9%)
- Yellow (12%)
- Black (18%)



- Cyan (18%)
- Magenta (25%)
- Yellow (28%)

Brightness & Saturation Gradients

These gradients show how the Hex color D1BEB8 changes by changing the brightness by 10 percent. The first figure shows a shift by +10% for each color and the second figure -10%.

Similar to the brightness gradients but the following saturation gradients show a change of the Hex color D1BEB8 by changing the saturation by 10% instead.

 D1BEB8

 D1BEB8

FFFFFF

 B5A39D

 FFF6F0

 9A8983

 806F6A

 675752

 4F403B

 382A25

 221510

 000000

 D1BEB8

 D1BEB8

 D1AEA3

 D1CECD

 D19E8E

 D1DEE2

 D18E79

 D1EEF7

 D17E64

 D1FEFF

 D16F50

 D1FFFF

 D15F3B

 D14F26

 D13F11

 D13200

Harmonies

Analogous

The Analogous color harmony consists of three colors that are next to each other on the color wheel.



D2BDBF



D1BEB8



CCC0B4

Triad

The Triadic color harmony groups three colors that are evenly spaced from another and form a triangle on the color wheel.



D1BEB8



B5C6BD



BFC1D0

Complementary

The Complementary color scheme is a pair of colors which are on the opposite of each other on the color wheel.



D1BEB8



B8CBD1

Split Complementary

Split-complementary colors differ from the complementary color scheme. The scheme consists of three colors, the original color and two neighbors of the complement color.



B6C4D0



D1BEB8



B0C6C5

Square

The Square scheme is like the rectangle color scheme, but the four colors are evenly spaced on the color wheel.



D1BEB8



BCC5B7



B1C6CC



C7BFCC

Rectangle

The Rectangle color scheme consists of four colors that form a rectangle on the color wheel.



D1BEB8



C7C2B3



B1C6CC



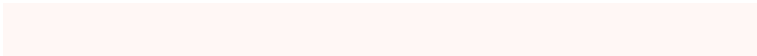
BCC2D0

Sweetspot

The Sweet Spot groups the original color and five complimentary colors.



D1BEB8



FFF7F5



D1B8CB



807B79



000000



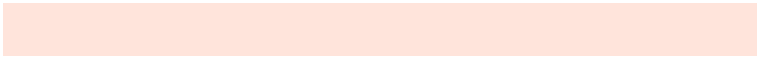
808080

Same Dimension

The Same Dimension uses a secret algorithm to generate beautiful new colors.



D1BEB8



FFE4DB



D1CAB8



69615E



A82800



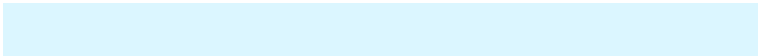
290A00

Inverse Universe

The Inverse Universe completely reimagines the original color for something new.



B8CBD1



DBF6FF



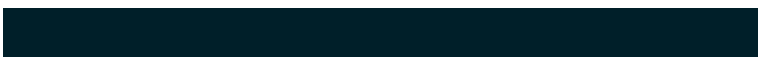
B8BFD1



5E6669



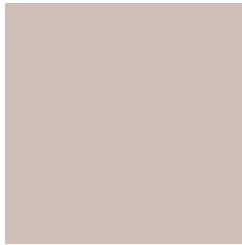
0080A8



001F29

Previews

White Background



This preview shows how the Hex color D1BEB8 looks on a white background.

Color Contrast Check

Large Text (above 18pt) WCAG AA × Fail

Any Text WCAG AA × Fail

Large Text (above 18pt) WCAG AAA × Fail

Any Text WCAG AAA × Fail

Black Background



This preview shows how the Hex color D1BEB8 looks on a black background.

Color Contrast Check

Large Text (above 18pt) WCAG AA ✓ Pass

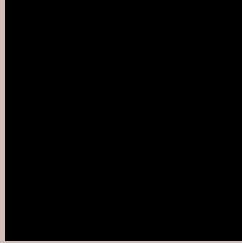
Any Text WCAG AA ✓ Pass

Large Text (above 18pt) WCAG AAA ✓ Pass

Any Text WCAG AAA ✓ Pass

If you want to check with other color combinations, try the [Color Contrast Checker](#).

Hex D1BEB8 Background



This preview shows how black text looks on a background with the Hex color D1BEB8.



This preview shows how white text looks on a background with the Hex color D1BEB8.

Color Blindness Simulation

Color vision deficiency is a very complex topic, and I could not describe the different causes any better than Wikipedia does, so if you want to learn more, you should check out their [article about color blindness](#).

Dichromacy





Tritanopia
D3BBCA

Trichromacy



Original Color
D1BEB8

Protanomaly
CBC0B9

Deuteranomaly
D5BCB9

Tritanomaly
D2BCC3

Monochromacy



Original Color
D1BEB8

Achromatopsia
C3C3C3

Achromatomaly
C8C1BF

CSS Examples

Text

The CSS property to change the color of the text to Hex D1BEB8 is called "color". The color property can be set on classes, ids or directly on the HTML element.

This example shows how text in the color #D1BEB8 looks like.

```
.text, #text, p{  
    color:#D1BEB8  
}
```

If you want to add a text shadow in that color use the text-shadow property, you can generate a text shadow directly with our [CSS Text Shadow Generator](#).

Here you see how black text with a 4 pixel #D1BEB8 colored shadow looks like.

```
.shadow{ text-shadow: 4px 4px 2px #D1BEB8
}
```

Border

The CSS property to change the border of an element to Hex D1BEB8 is called "border". The border property can be set on classes, ids or directly on the HTML element.

This example shows the color as border, it can be applied via the CSS property "border" or "border-color".

```
.border, #border, table{ border:4px solid
#D1BEB8 }
```

If only the border color should be changed use the property `border-color`.

```
.border{ border-color:#D1BEB8 }
```

If you want to add a box shadow in that color use:

Here you see how a box with a 4 pixel #D1BEB8 colored shadow looks like.

```
.boxshadow{ -moz-box-shadow:4px 4px 4px  
4px #D1BEB8; -webkit-box-shadow:4px 4px  
4px 4px #D1BEB8; box-shadow:4px 4px 4px  
4px #D1BEB8 }
```

Background

The CSS property to change the background color of an element to Hex D1BEB8 is called "background". The background property can be set on classes, ids or directly on the HTML element.

```
.background, #background, body{  
background:#D1BEB8 }
```

If only the background color should be changed can be used:

```
.background{ background-color:#D1BEB8 }
```

This example shows the color as background, it is applied via the CSS property "background".

To optimize and compress your CSS code, you can use our [online CSS compressor and optimizer](#) based on csstidy. If you want to create a linear or radial gradient as background or border, check our [CSS Gradient Generator](#).

Hey! You found this booklet interesting? Support Converting Colors with the new Membership Option!

The pro membership hides all ads, plus gives you double the colors in the color bucket, and more awesome pro features!

[Learn more, Memberships starting at \\$2.50/m!](#)

**Follow me
on Twitter!**

@ConvertingColor