

Converting Colors

Hex(D1BECA)

Have a look what the booklet for
Hex(D1BECA) contains.

Hex(D1BECA)	3
<i>Conversions</i>	4
<i>Details</i>	6
<i>Harmonies</i>	11
<i>Previews</i>	23
<i>Color Blindness Simulation</i>	26
<i>CSS Examples</i>	29

Color

Hex(D1BECA)

Conversions

Conversions Part 1

Format	Color
Hex	D1BECA
RGB	209, 190, 202
RGB Percent	82%, 75%, 79%
CMY	0.1804, 0.2549, 0.2078
CMYK	0.00, 0.09, 0.03, 0.18
HSL	322°, 17%, 78%
HSV	322°, 9%, 82%
XYZ	55.3686, 54.6465, 63.5067
YIQ	197.0490, 7.4720, 7.7600

Conversions

Conversions Part 2

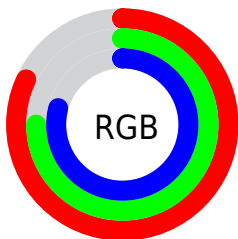
Format	Color
R_{YB}	209, 190, 202
Decimal	13745866
CIE Lab	78.84, 8.80, -3.59
CIE LCh	79, 9.508, 337.815
Yxy	54.6465, 0.3191, 0.3149
Android (android.graphics.Color)	4291935946 (0xFFD1BECA)
YUV	197.0490, 2.4408, 10.4810
Hunter-Lab	73.9233, 4.3310, 0.8109

Details

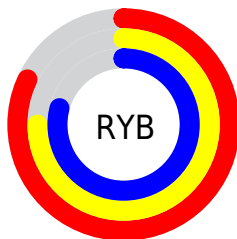
The Hex color **D1BECA** is a light color, and the websafe version is hex **CCCCCC**. A complement of this color would be **BED1C5**, and the grayscale version is **C5C5C5**.

A 20% lighter version of the original color is **FFF6FF**, and **9B8994** is the 20% darker color. If you saturate the color by 10%, you get **D1A9C2**, and if you desaturate by 10%, it is **D1D3D2**.

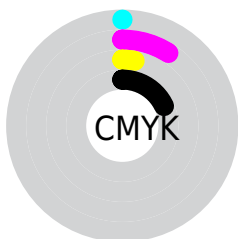
Distribution



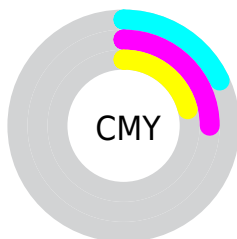
- Red (82%)
- Green (75%)
- Blue (79%)



- Red (82%)
- Yellow (75%)
- Blue (79%)



- Cyan (0%)
- Magenta (9%)
- Yellow (3%)
- Black (18%)



- Cyan (18%)
- Magenta (25%)
- Yellow (21%)

Brightness & Saturation Gradients

These gradients show how the Hex color D1BECA changes by changing the brightness by 10 percent. The first figure shows a shift by +10% for each color and the second figure -10%.

Similar to the brightness gradients but the following saturation gradients show a change of the Hex color D1BECA by changing the saturation by 10% instead.

 D1BECA

FFFFFF

 FFF6FF

 D1BECA

 B5A3AF

 9B8994

 806F7A

 675761

 4F404A

 382A33

 23151E

 080004

 000000

 D1BECA

 D1BECA

 D1A9C2

 D1D3D2

 D194BB

 D1E8D9

 D17FB3

 D1FDE1

 D16AAB

 D1FFE9

 D156A4

 D1FFF0

 D1419C

 D1FFF8

 D12C94

 D1FFFF

 D1178C

 D10285

Harmonies

Analogous

The Analogous color harmony consists of three colors that are next to each other on the color wheel.



C8C0D1



D1BECA



D6BDC1

Triad

The Triadic color harmony groups three colors that are evenly spaced from another and form a triangle on the color wheel.



D1BECA



C8C3B2



AEC8CE

Complementary

The Complementary color scheme is a pair of colors which are on the opposite of each other on the color wheel.



D1BECA



BED1C5

Split Complementary

Split-complementary colors differ from the complementary color scheme. The scheme consists of three colors, the original color and two neighbors of the complement color.



AEC9C5



D1BECA



BEC6B5

Square

The Square scheme is like the rectangle color scheme, but the four colors are evenly spaced on the color wheel.



D1BECA



D1C0B3



B4C8BC



B3C6D3

Rectangle

The Rectangle color scheme consists of four colors that form a rectangle on the color wheel.



D1BECA



D7BEBB



B4C8BC



ADC8CB

Sweetspot

The Sweet Spot groups the original color and five complimentary colors.



D1BECA



FFF7FC



C5BED1



807A7E



000000



808080

Same Dimension

The Same Dimension uses a secret algorithm to generate beautiful new colors.



D1BECA



FFE3F5



D1BEC1



695E65



A8006A



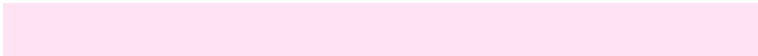
29001A

Inverse Universe

The Inverse Universe completely reimagines the original color for something new.



D1BECA



FFE3F5



BED1CE



695E65



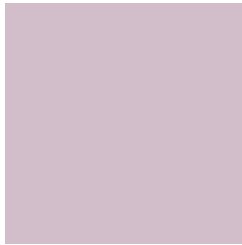
A8006A



29001A

Previews

White Background



This preview shows how the Hex color D1BECA looks on a white background.

Color Contrast Check

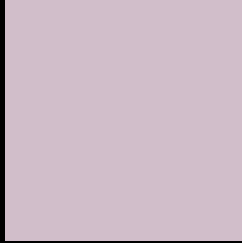
Large Text (above 18pt) WCAG AA × Fail

Any Text WCAG AA × Fail

Large Text (above 18pt) WCAG AAA × Fail

Any Text WCAG AAA × Fail

Black Background



This preview shows how the Hex color D1BECA looks on a black background.

Color Contrast Check

Large Text (above 18pt) WCAG AA ✓ Pass

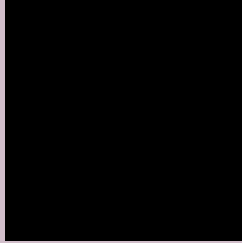
Any Text WCAG AA ✓ Pass

Large Text (above 18pt) WCAG AAA ✓ Pass

Any Text WCAG AAA ✓ Pass

If you want to check with other color combinations, try the [Color Contrast Checker](#).

Hex D1BECA Background



This preview shows how black text looks on a background with the Hex color D1BECA.



This preview shows how white text looks on a background with the Hex color D1BECA.

Color Blindness Simulation

Color vision deficiency is a very complex topic, and I could not describe the different causes any better than Wikipedia does, so if you want to learn more, you should check out their [article about color blindness](#).

Dichromacy



Original Color
D1BECA

Protanopia
C4C2CC

Deuteranopia
D3BDCA

Trichromacy



Original Color
D1BECA

Protanomaly
C9C1CB

Deuteranomaly
D2BDCA

Tritanomaly
D1BECB

Monochromacy



Original Color
D1BECA

Achromatopsia
C5C5C5

Achromatomaly
C9C2C7

CSS Examples

Text

The CSS property to change the color of the text to Hex D1BECA is called "color". The color property can be set on classes, ids or directly on the HTML element.

This example shows how text in the color #D1BECA looks like.

```
.text, #text, p{  
    color:#D1BECA  
}
```

If you want to add a text shadow in that color use the text-shadow property, you can generate a text shadow directly with our [CSS Text Shadow Generator](#).

Here you see how black text with a 4 pixel #D1BECA colored shadow looks like.

```
.shadow{ text-shadow: 4px 4px 2px #D1BECA
}
```

Border

The CSS property to change the border of an element to Hex D1BECA is called "border". The border property can be set on classes, ids or directly on the HTML element.

This example shows the color as border, it can be applied via the CSS property "border" or "border-color".

```
.border, #border, table{ border:4px solid
#D1BECA }
```

If only the border color should be changed use the property `border-color`.

```
.border{ border-color:#D1BECA }
```

If you want to add a box shadow in that color use:

Here you see how a box with a 4 pixel #D1BECA colored shadow looks like.

```
.boxshadow{ -moz-box-shadow:4px 4px 4px  
4px #D1BECA; -webkit-box-shadow:4px 4px  
4px 4px #D1BECA; box-shadow:4px 4px 4px  
4px #D1BECA }
```

Background

The CSS property to change the background color of an element to Hex D1BECA is called "background". The background property can be set on classes, ids or directly on the HTML element.

```
.background, #background, body{  
background:#D1BECA }
```

If only the background color should be changed can be used:

```
.background{ background-color:#D1BECA }
```

This example shows the color as background, it is applied via the CSS property "background".

To optimize and compress your CSS code, you can use our [online CSS compressor and optimizer](#) based on csstidy. If you want to create a linear or radial gradient as background or border, check our [CSS Gradient Generator](#).

Hey! You found this booklet interesting? Support Converting Colors with the new Membership Option!

The pro membership hides all ads, plus gives you double the colors in the color bucket, and more awesome pro features!

[Learn more, Memberships starting at \\$2.50/m!](#)

**Follow me
on Twitter!**

@ConvertingColor