

Converting Colors

Hex(D28177)

Have a look what the booklet for
Hex(D28177) contains.

Hex(D28177)	3
<i>Conversions</i>	4
<i>Details</i>	6
<i>Harmonies</i>	11
<i>Previews</i>	23
<i>Color Blindness Simulation</i>	26
<i>CSS Examples</i>	29

Color

Hex(D28177)

Conversions

Conversions Part 1

Format	Color
Hex	D28177
RGB	210, 129, 119
RGB Percent	82%, 51%, 47%
CMY	0.1765, 0.4941, 0.5333
CMYK	0.00, 0.39, 0.43, 0.18
HSL	7°, 50%, 65%
HSV	7°, 43%, 82%
XYZ	37.7584, 30.7341, 21.3949
YIQ	152.0790, 51.4860, 14.0620

Conversions

Conversions Part 2

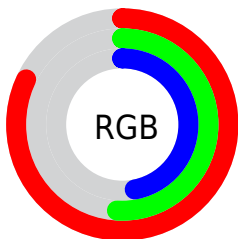
Format	Color
R_{YB}	210, 130, 119
Decimal	13795703
CIE Lab	62.28, 30.14, 18.70
CIE LCh	62, 35.464, 31.816
Yxy	30.7341, 0.4201, 0.3419
Android (android.graphics.Color)	4291985783 (0xFFD28177)
YUV	152.0790, -16.3079, 50.7967
Hunter-Lab	55.4383, 24.5572, 15.9254

Details

The Hex color **D28177** is a light color, and the websafe version is hex **CC6666**. A complement of this color would be **77C8D2**, and the grayscale version is **989898**.

A 20% lighter version of the original color is **FFB7AB**, and **994E47** is the 20% darker color. If you saturate the color by 10%, you get **D26E62**, and if you desaturate by 10%, it is **D2948C**.

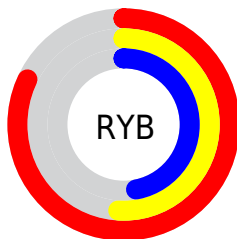
Distribution



Red (82%)

Green (51%)

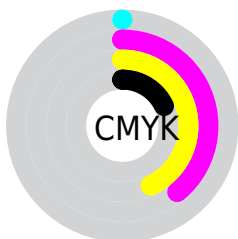
Blue (47%)



Red (82%)

Yellow (51%)

Blue (47%)

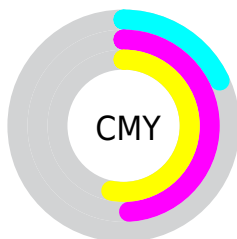


Cyan (0%)

Magenta (39%)

Yellow (43%)

Black (18%)



Cyan (18%)

Magenta (49%)

Yellow (53%)

Brightness & Saturation Gradients

These gradients show how the Hex color D28177 changes by changing the brightness by 10 percent. The first figure shows a shift by +10% for each color and the second figure -10%.

Similar to the brightness gradients but the following saturation gradients show a change of the Hex color D28177 by changing the saturation by 10% instead.

 D28177

 D28177

FFFFFF

 B5675E


 FFB7AB

 994E47

 FFD3C7

 7D3630

 FFEFE3

 611E1B

 470401

 2F0000

 000000

 D28177

 D28177

 D26E62

 D2948C

 D25C4D

 D2A6A1

 D24938

 D2B9B6

 D23623

 D2CCCB

 D2240E

 D2DEE0

 D21700

 D2F1F5

 D2FFFF

Harmonies

Analogous

The Analogous color harmony consists of three colors that are next to each other on the color wheel.



D27E96



D28177



C38A60

Triad

The Triadic color harmony groups three colors that are evenly spaced from another and form a triangle on the color wheel.



D28177



62A578



6B99D5

Complementary

The Complementary color scheme is a pair of colors which are on the opposite of each other on the color wheel.



D28177



77C8D2

Split Complementary

Split-complementary colors differ from the complementary color scheme. The scheme consists of three colors, the original color and two neighbors of the complement color.



2FA2CD



D28177



35A797

Square

The Square scheme is like the rectangle color scheme, but the four colors are evenly spaced on the color wheel.



D28177



889F60



00A6B7



9D8ECC

Rectangle

The Rectangle color scheme consists of four colors that form a rectangle on the color wheel.



D28177



B39258



00A6B7



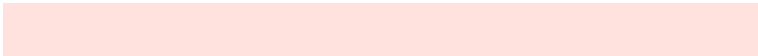
589CD4

Sweetspot

The Sweet Spot groups the original color and five complimentary colors.



D28177



FFE1DE



D277C9



806D6B



000000



808080

Same Dimension

The Same Dimension uses a secret algorithm to generate beautiful new colors.



D28177



FF897A



D2AE77



695F5E



A81200



290400

Inverse Universe

The Inverse Universe completely reimagines the original color for something new.



77C8D2



7AF0FF



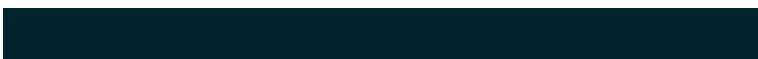
779BD2



5E6769



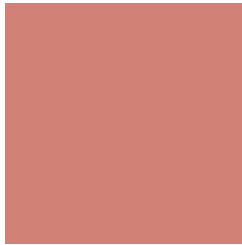
0096A8



002429

Previews

White Background



This preview shows how the Hex color D28177 looks on a white background.

Color Contrast Check

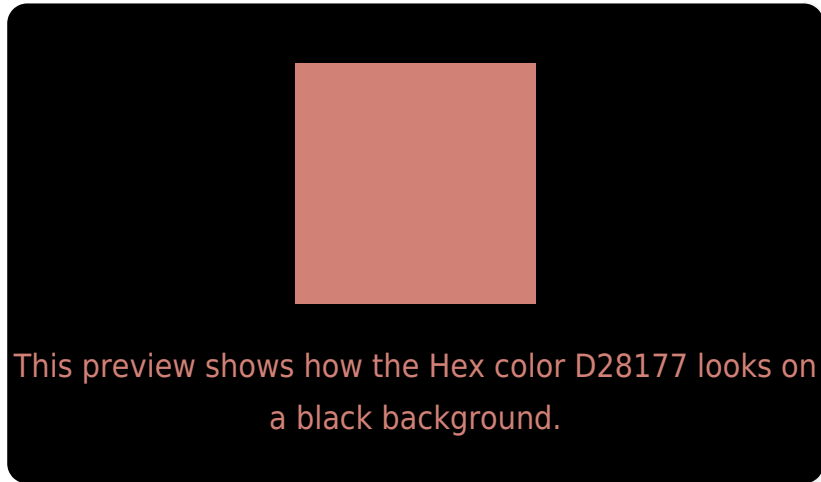
Large Text (above 18pt) WCAG AA × Fail

Any Text WCAG AA × Fail

Large Text (above 18pt) WCAG AAA × Fail

Any Text WCAG AAA × Fail

Black Background



Color Contrast Check

Large Text (above 18pt) WCAG AA ✓ Pass

Any Text WCAG AA ✓ Pass

Large Text (above 18pt) WCAG AAA ✓ Pass

Any Text WCAG AAA ✓ Pass

If you want to check with other color combinations, try the [Color Contrast Checker](#).

Hex D28177 Background



This preview shows how black text looks on a background with the Hex color D28177.



This preview shows how white text looks on a background with the Hex color D28177.

Color Blindness Simulation

Color vision deficiency is a very complex topic, and I could not describe the different causes any better than Wikipedia does, so if you want to learn more, you should check out their [article about color blindness](#).

Dichromacy





Tritanopia
D37E88

Trichromacy



Original Color
D28177

Protanomaly
B28F7D

Deuteranomaly
BD8B75

Tritanomaly
D37F82

Monochromacy



Original Color
D28177

Achromatopsia
989898

Achromatomaly
AD908C

CSS Examples

Text

The CSS property to change the color of the text to Hex D28177 is called "color". The color property can be set on classes, ids or directly on the HTML element.

This example shows how text in the color #D28177 looks like.

```
.text, #text, p{  
    color:#D28177  
}
```

If you want to add a text shadow in that color use the text-shadow property, you can generate a text shadow directly with our [CSS Text Shadow Generator](#).

Here you see how black text with a 4 pixel #D28177 colored shadow looks like.

```
.shadow{ text-shadow: 4px 4px 2px #D28177
}
```

Border

The CSS property to change the border of an element to Hex D28177 is called "border". The border property can be set on classes, ids or directly on the HTML element.

This example shows the color as border, it can be applied via the CSS property "border" or "border-color".

```
.border, #border, table{ border:4px solid
#D28177 }
```

If only the border color should be changed use the property `border-color`.

```
.border{ border-color:#D28177 }
```

If you want to add a box shadow in that color use:

Here you see how a box with a 4 pixel #D28177 colored shadow looks like.

```
.boxshadow{ -moz-box-shadow:4px 4px 4px  
4px #D28177; -webkit-box-shadow:4px 4px  
4px 4px #D28177; box-shadow:4px 4px 4px  
4px #D28177 }
```

Background

The CSS property to change the background color of an element to Hex D28177 is called "background". The background property can be set on classes, ids or directly on the HTML element.

```
.background, #background, body{  
background:#D28177 }
```

If only the background color should be changed can be used:

```
.background{ background-color:#D28177 }
```

This example shows the color as background, it is applied via the CSS property "background".

To optimize and compress your CSS code, you can use our [online CSS compressor and optimizer](#) based on csstidy. If you want to create a linear or radial gradient as background or border, check our [CSS Gradient Generator](#).

Hey! You found this booklet interesting? Support Converting Colors with the new Membership Option!

The pro membership hides all ads, plus gives you double the colors in the color bucket, and more awesome pro features!

[Learn more, Memberships starting at \\$2.50/m!](#)

**Follow me
on Twitter!**

@ConvertingColor