

Converting Colors

Hex(D284EC)

Have a look what the booklet for
Hex(D284EC) contains.

Hex(D284EC)	3
<i>Conversions</i>	4
<i>Details</i>	6
<i>Harmonies</i>	11
<i>Previews</i>	23
<i>Color Blindness Simulation</i>	26
<i>CSS Examples</i>	29

Color

Hex(D284EC)

Conversions

Conversions Part 1

Format	Color
Hex	D284EC
RGB	210, 132, 236
RGB Percent	82%, 52%, 93%
CMY	0.1765, 0.4824, 0.0745
CMYK	0.11, 0.44, 0.00, 0.07
HSL	285°, 73%, 72%
HSV	285°, 44%, 93%
XYZ	49.9699, 36.2603, 83.7221
YIQ	167.1780, 13.1040, 48.8800

Conversions

Conversions Part 2

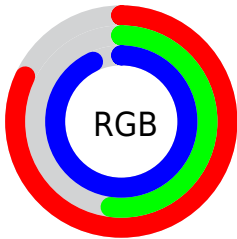
Format	Color
R _Y B	210, 132, 236
Decimal	13796588
CIE Lab	66.72, 47.00, -40.61
CIE LCh	67, 62.115, 319.173
Yxy	36.2603, 0.2940, 0.2134
Android (android.graphics.Color)	4291986668 (0xFFD284EC)
YUV	167.1780, 33.9292, 37.5549
Hunter-Lab	60.2165, 42.7471, -40.2824

Details

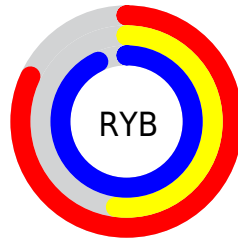
The Hex color **D284EC** is a light color, and the websafe version is hex **CC99FF**. A complement of this color would be **9EEC84**, and the grayscale version is **A7A7A7**.

A 20% lighter version of the original color is **FFBBFF**, and **9A50B4** is the 20% darker color. If you saturate the color by 10%, you get **CC6CEC**, and if you desaturate by 10%, it is **D89CEC**.

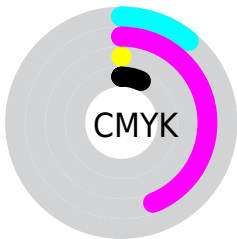
Distribution



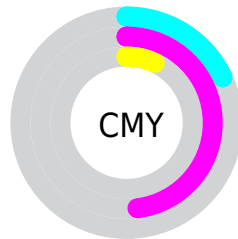
- Red (82%)
- Green (52%)
- Blue (93%)



- Red (82%)
- Yellow (52%)
- Blue (93%)



- Cyan (11%)
- Magenta (44%)
- Yellow (0%)
- Black (7%)



- Cyan (18%)
- Magenta (48%)
- Yellow (7%)

Brightness & Saturation Gradients

These gradients show how the Hex color D284EC changes by changing the brightness by 10 percent. The first figure shows a shift by +10% for each color and the second figure -10%.

Similar to the brightness gradients but the following saturation gradients show a change of the Hex color D284EC by changing the saturation by 10% instead.

 D284EC

FFFFFF

 FFBBFF

 FFD7FF

 FFF4FF

 D284EC

 B56AD0

 9A50B4

 7E3699

 641B7E

 490065

 30004C

 180035

 00021F

 000001

 D284EC

 D284EC

 CC6CEC

 D89CEC

 C655EC

 DEB3EC

 C03DEC

 E4CBEC

 BA26EC

 EAE2EC

 B40EEC

 F0FAEC

 B100EC

 F5FFEC

 FBFFEC

 FFFFEC

Harmonies

Analogous

The Analogous color harmony consists of three colors that are next to each other on the color wheel.



7E9CFF



D284EC



FE71B9

Triad

The Triadic color harmony groups three colors that are evenly spaced from another and form a triangle on the color wheel.



D284EC



D1982C



00BDC5

Complementary

The Complementary color scheme is a pair of colors which are on the opposite of each other on the color wheel.



D284EC



9EEC84

Split Complementary

Split-complementary colors differ from the complementary color scheme. The scheme consists of three colors, the original color and two neighbors of the complement color.



00BC8B



D284EC



9DAA2E

Square

The Square scheme is like the rectangle color scheme, but the four colors are evenly spaced on the color wheel.



D284EC



F7824F



5AB655



00B9F6

Rectangle

The Rectangle color scheme consists of four colors that form a rectangle on the color wheel.



D284EC



FF6E93



5AB655



00BDB2

Sweetspot

The Sweet Spot groups the original color and five complimentary colors.



D284EC



F7DEFF



849EEC



7A6B80



000000



808080

Same Dimension

The Same Dimension uses a secret algorithm to generate beautiful new colors.



D284EC



DD78FF



EC84D2



726A75



8800B5



280036

Inverse Universe

The Inverse Universe completely reimagines the original color for something new.



EC849E



FF789A



84EC9E



756A6D



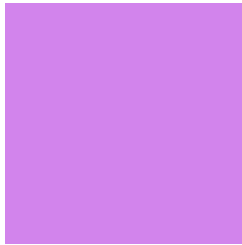
B5002D



36000D

Previews

White Background



This preview shows how the Hex color D284EC looks on a white background.

Color Contrast Check

Large Text (above 18pt) WCAG AA × Fail

Any Text WCAG AA × Fail

Large Text (above 18pt) WCAG AAA × Fail

Any Text WCAG AAA × Fail

Black Background



Color Contrast Check

Large Text (above 18pt) WCAG AA ✓ Pass

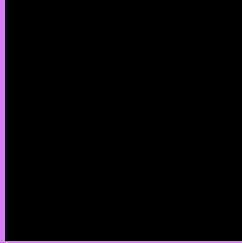
Any Text WCAG AA ✓ Pass

Large Text (above 18pt) WCAG AAA ✓ Pass

Any Text WCAG AAA ✓ Pass

If you want to check with other color combinations, try the [Color Contrast Checker](#).

Hex D284EC Background



This preview shows how black text looks on a background with the Hex color D284EC.

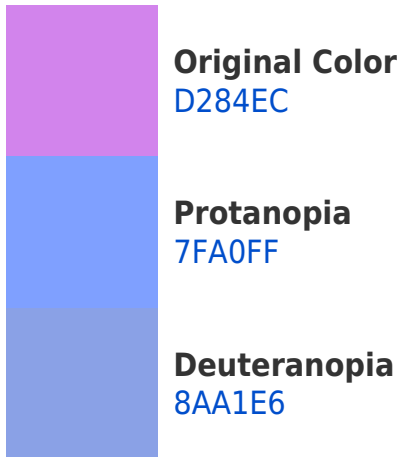


This preview shows how white text looks on a background with the Hex color D284EC.

Color Blindness Simulation

Color vision deficiency is a very complex topic, and I could not describe the different causes any better than Wikipedia does, so if you want to learn more, you should check out their [article about color blindness](#).

Dichromacy





Tritanopia
C795A0

Trichromacy



Original Color
D284EC



Protanomaly
9D96F8



Deuteranomaly
A496E8



Tritanomaly
CB8FBC

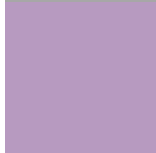
Monochromacy



Original Color
D284EC



Achromatopsia
A7A7A7



Achromatomaly
B79AC0

CSS Examples

Text

The CSS property to change the color of the text to Hex D284EC is called "color". The color property can be set on classes, ids or directly on the HTML element.

This example shows how text in the color #D284EC looks like.

```
.text, #text, p{  
    color:#D284EC  
}
```

If you want to add a text shadow in that color use the text-shadow property, you can generate a text shadow directly with our [CSS Text Shadow Generator](#).

Here you see how black text with a 4 pixel #D284EC colored shadow looks like.

```
.shadow{ text-shadow: 4px 4px 2px #D284EC
}
```

Border

The CSS property to change the border of an element to Hex D284EC is called "border". The border property can be set on classes, ids or directly on the HTML element.

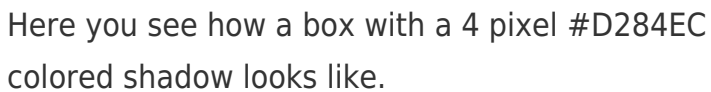
This example shows the color as border, it can be applied via the CSS property "border" or "border-color".

```
.border, #border, table{ border:4px solid
#D284EC }
```

If only the border color should be changed use the property border-color.

```
.border{ border-color:#D284EC }
```

If you want to add a box shadow in that color use:



Here you see how a box with a 4 pixel #D284EC colored shadow looks like.

```
.boxshadow{ -moz-box-shadow:4px 4px 4px  
4px #D284EC; -webkit-box-shadow:4px 4px  
4px 4px #D284EC; box-shadow:4px 4px 4px  
4px #D284EC }
```

Background

The CSS property to change the background color of an element to Hex D284EC is called "background". The background property can be set on classes, ids or directly on the HTML element.

```
.background, #background, body{  
background:#D284EC }
```

If only the background color should be changed can be used:

```
.background{ background-color:#D284EC }
```

This example shows the color as background, it is applied via the CSS property "background".

To optimize and compress your CSS code, you can use our [online CSS compressor and optimizer](#) based on csstidy. If you want to create a linear or radial gradient as background or border, check our [CSS Gradient Generator](#).

Hey! You found this booklet interesting? Support Converting Colors with the new Membership Option!

The pro membership hides all ads, plus gives you double the colors in the color bucket, and more awesome pro features!

[Learn more, Memberships starting at \\$2.50/m!](#)

**Follow me
on Twitter!**

@ConvertingColor