

Converting Colors

Hex(D28F88)

Have a look what the booklet for
Hex(D28F88) contains.

Hex(D28F88)	3
<i>Conversions</i>	4
<i>Details</i>	6
<i>Harmonies</i>	11
<i>Previews</i>	23
<i>Color Blindness Simulation</i>	26
<i>CSS Examples</i>	29

Color

Hex(D28F88)

Conversions

Conversions Part 1

Format	Color
Hex	D28F88
RGB	210, 143, 136
RGB Percent	82%, 56%, 53%
CMY	0.1765, 0.4392, 0.4667
CMYK	0.00, 0.32, 0.35, 0.18
HSL	6°, 45%, 68%
HSV	6°, 35%, 82%
XYZ	40.8447, 35.1241, 27.9194
YIQ	162.2350, 42.1790, 12.0270

Conversions

Conversions Part 2

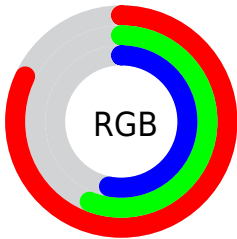
Format	Color
R _{YB}	210, 144, 136
Decimal	13799304
CIE Lab	65.85, 24.53, 14.05
CIE LCh	66, 28.272, 29.803
Yxy	35.1241, 0.3932, 0.3381
Android (android.graphics.Color)	4291989384 (0xFFD28F88)
YUV	162.2350, -12.9339, 41.8899
Hunter-Lab	59.2656, 19.3040, 13.5550

Details

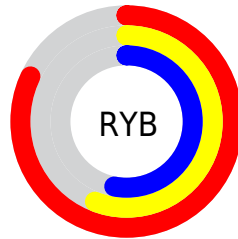
The Hex color **D28F88** is a light color, and the websafe version is hex **CC9999**. A complement of this color would be **88CBD2**, and the grayscale version is **A2A2A2**.

A 20% lighter version of the original color is **FFC5BD**, and **9A5C56** is the 20% darker color. If you saturate the color by 10%, you get **D27C73**, and if you desaturate by 10%, it is **D2A29D**.

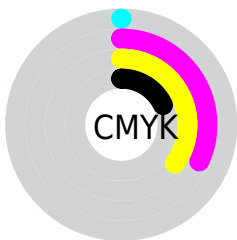
Distribution



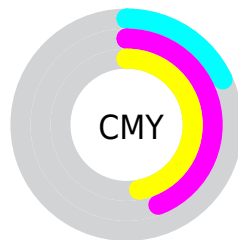
- Red (82%)
- Green (56%)
- Blue (53%)



- Red (82%)
- Yellow (56%)
- Blue (53%)



- Cyan (0%)
- Magenta (32%)
- Yellow (35%)
- Black (18%)



- Cyan (18%)
- Magenta (44%)
- Yellow (47%)

Brightness & Saturation Gradients

These gradients show how the Hex color D28F88 changes by changing the brightness by 10 percent. The first figure shows a shift by +10% for each color and the second figure -10%.

Similar to the brightness gradients but the following saturation gradients show a change of the Hex color D28F88 by changing the saturation by 10% instead.

 D28F88

 D28F88

FFFFFF

 B5756F

 FFC5BD

 9A5C56

 FFE1D9

 7E443F

 FFFEF6

 642D29

 4A1615

 310000

 100000

 000000

 D28F88

 D28F88

 D27C73

 D2A29D

 D2695E

 D2B5B2

 D25649

 D2C8C7

 D24334

 D2DBDC

 D2301F

 D2EEF1

 D21D0A

 D2FFFF

 D21400

Harmonies

Analogous

The Analogous color harmony consists of three colors that are next to each other on the color wheel.



D08DA1



D28F88



C79675

Triad

The Triadic color harmony groups three colors that are evenly spaced from another and form a triangle on the color wheel.



D28F88



7AAB86



7FA2D2

Complementary

The Complementary color scheme is a pair of colors which are on the opposite of each other on the color wheel.



D28F88



88CBD2

Split Complementary

Split-complementary colors differ from the complementary color scheme. The scheme consists of three colors, the original color and two neighbors of the complement color.



5DA9CB



D28F88



5EAE9F

Square

The Square scheme is like the rectangle color scheme, but the four colors are evenly spaced on the color wheel.



D28F88



97A673



4FADB8



A39ACC

Rectangle

The Rectangle color scheme consists of four colors that form a rectangle on the color wheel.



D28F88



BA9B6E



4FADB8



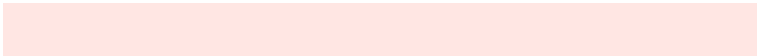
72A5D1

Sweetspot

The Sweet Spot groups the original color and five complimentary colors.



D28F88



FFE6E3



D288CC



80706F



000000



808080

Same Dimension

The Same Dimension uses a secret algorithm to generate beautiful new colors.



D28F88



FF9E94



D2B388



695F5E



A81000



290400

Inverse Universe

The Inverse Universe completely reimagines the original color for something new.



88CBD2



94F5FF



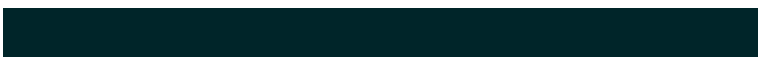
88A7D2



5E6869



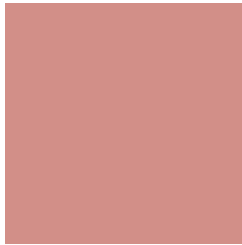
0098A8



002529

Previews

White Background



This preview shows how the Hex color D28F88 looks on a white background.

Color Contrast Check

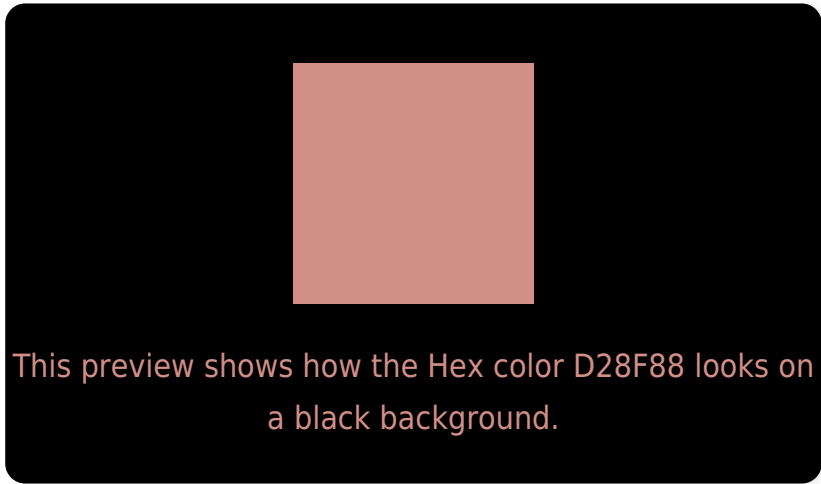
Large Text (above 18pt) WCAG AA × Fail

Any Text WCAG AA × Fail

Large Text (above 18pt) WCAG AAA × Fail

Any Text WCAG AAA × Fail

Black Background



Color Contrast Check

Large Text (above 18pt) WCAG AA ✓ Pass

Any Text WCAG AA ✓ Pass

Large Text (above 18pt) WCAG AAA ✓ Pass

Any Text WCAG AAA ✓ Pass

If you want to check with other color combinations, try the [Color Contrast Checker](#).

Hex D28F88 Background



This preview shows how black text looks on a background with the Hex color D28F88.



This preview shows how white text looks on a background with the Hex color D28F88.

Color Blindness Simulation

Color vision deficiency is a very complex topic, and I could not describe the different causes any better than Wikipedia does, so if you want to learn more, you should check out their [article about color blindness](#).

Dichromacy



Original Color
D28F88

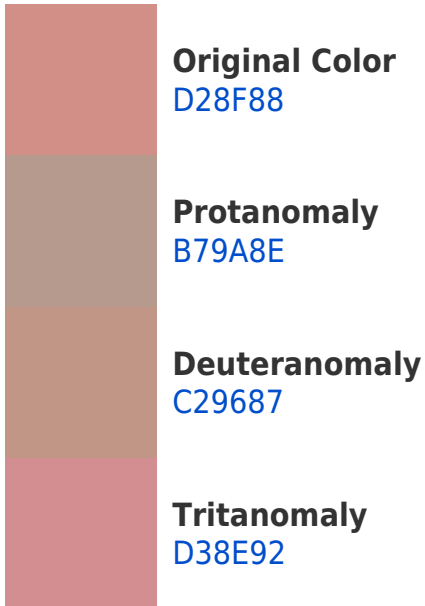
Protanopia
A7A091

Deuteranopia
B99A86



Tritanopia
D38D97

Trichromacy



Monochromacy



CSS Examples

Text

The CSS property to change the color of the text to Hex D28F88 is called "color". The color property can be set on classes, ids or directly on the HTML element.

This example shows how text in the color #D28F88 looks like.

```
.text, #text, p{  
    color:#D28F88  
}
```

If you want to add a text shadow in that color use the text-shadow property, you can generate a text shadow directly with our [CSS Text Shadow Generator](#).

Here you see how black text with a 4 pixel #D28F88 colored shadow looks like.

```
.shadow{ text-shadow: 4px 4px 2px #D28F88  
}
```

Border

The CSS property to change the border of an element to Hex D28F88 is called "border". The border property can be set on classes, ids or directly on the HTML element.

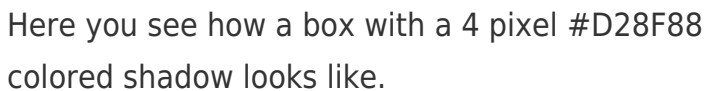
This example shows the color as border, it can be applied via the CSS property "border" or "border-color".

```
.border, #border, table{ border:4px solid  
#D28F88 }
```

If only the border color should be changed use the property `border-color`.

```
.border{ border-color:#D28F88 }
```

If you want to add a box shadow in that color use:



Here you see how a box with a 4 pixel #D28F88 colored shadow looks like.

```
.boxshadow{ -moz-box-shadow:4px 4px 4px  
4px #D28F88; -webkit-box-shadow:4px 4px  
4px 4px #D28F88; box-shadow:4px 4px 4px  
4px #D28F88 }
```

Background

The CSS property to change the background color of an element to Hex D28F88 is called "background". The background property can be set on classes, ids or directly on the HTML element.

```
.background, #background, body{  
background:#D28F88 }
```

If only the background color should be changed can be used:

```
.background{ background-color:#D28F88 }
```

This example shows the color as background, it is applied via the CSS property "background".

To optimize and compress your CSS code, you can use our [online CSS compressor and optimizer](#) based on csstidy. If you want to create a linear or radial gradient as background or border, check our [CSS Gradient Generator](#).

Hey! You found this booklet interesting? Support Converting Colors with the new Membership Option!

The pro membership hides all ads, plus gives you double the colors in the color bucket, and more awesome pro features!

[Learn more, Memberships starting at \\$2.50/m!](#)

**Follow me
on Twitter!**

@ConvertingColor