

Converting Colors

Hex(D2A0A0)

Have a look what the booklet for
Hex(D2A0A0) contains.

Hex(D2A0A0)	3
<i>Conversions</i>	4
<i>Details</i>	6
<i>Harmonies</i>	11
<i>Previews</i>	23
<i>Color Blindness Simulation</i>	26
<i>CSS Examples</i>	29

Color

Hex(D2A0A0)

Conversions

Conversions Part 1

Format	Color
Hex	D2A0A0
RGB	210, 160, 160
RGB Percent	82%, 63%, 63%
CMY	0.1765, 0.3725, 0.3725
CMYK	0.00, 0.24, 0.24, 0.18
HSL	0°, 36%, 73%
HSV	0°, 24%, 82%
XYZ	45.4943, 41.3813, 38.8473
YIQ	174.9500, 29.8000, 10.6000

Conversions

Conversions Part 2

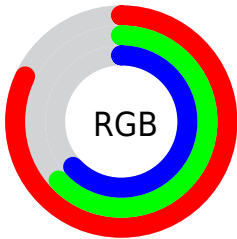
Format	Color
R _Y B	210, 160, 160
Decimal	13803680
CIE Lab	70.44, 18.52, 7.19
CIE LCh	70, 19.869, 21.209
Yxy	41.3813, 0.3619, 0.3291
Android (android.graphics.Color)	4291993760 (0xFFD2A0A0)
YUV	174.9500, -7.3703, 30.7389
Hunter-Lab	64.3283, 13.6643, 9.2251

Details

The Hex color **D2A0A0** is a light color, and the websafe version is hex **CC9999**. A complement of this color would be **A0D2D2**, and the grayscale version is **AFAFAF**.

A 20% lighter version of the original color is **FFD7D7**, and **9B6C6D** is the 20% darker color. If you saturate the color by 10%, you get **D28B8B**, and if you desaturate by 10%, it is **D2B5B5**.

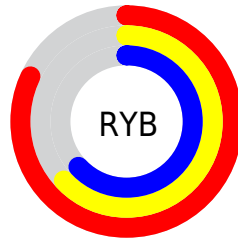
Distribution



Red (82%)

Green (63%)

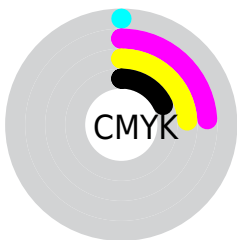
Blue (63%)



Red (82%)

Yellow (63%)

Blue (63%)

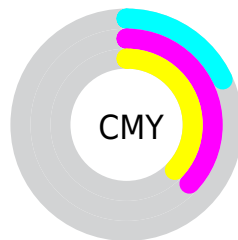


Cyan (0%)

Magenta (24%)

Yellow (24%)

Black (18%)



Cyan (18%)

Magenta (37%)

Yellow (37%)

Brightness & Saturation Gradients

These gradients show how the Hex color D2A0A0 changes by changing the brightness by 10 percent. The first figure shows a shift by +10% for each color and the second figure -10%.

Similar to the brightness gradients but the following saturation gradients show a change of the Hex color D2A0A0 by changing the saturation by 10% instead.

 D2A0A0

 D2A0A0

FFFFFF

 B68686

 FFD7D7

 9B6C6D

 FFF3F3

 805454

 663C3D

 4D2628

 351113

 210001

 000000

 D2A0A0

 D2A0A0

 D28B8B

 D2B5B5

 D27676

 D2CACA

 D26161

 D2DFDF

 D24C4C

 D2F4F4

 D23737

 D2FFFF

 D22222

 D20D0D

 D20000

Harmonies

Analogous

The Analogous color harmony consists of three colors that are next to each other on the color wheel.



CDA0B2



D2A0A0



CDA491

Triad

The Triadic color harmony groups three colors that are evenly spaced from another and form a triangle on the color wheel.



D2A0A0



98B495



91B0CF

Complementary

The Complementary color scheme is a pair of colors which are on the opposite of each other on the color wheel.



D2A0A0



A0D2D2

Split Complementary

Split-complementary colors differ from the complementary color scheme. The scheme consists of three colors, the original color and two neighbors of the complement color.



7FB4C8



D2A0A0



85B6A6

Square

The Square scheme is like the rectangle color scheme, but the four colors are evenly spaced on the color wheel.



D2A0A0



ADAF8A



7BB7B9



A9A9CE

Rectangle

The Rectangle color scheme consists of four colors that form a rectangle on the color wheel.



D2A0A0



C5A78B



7BB7B9



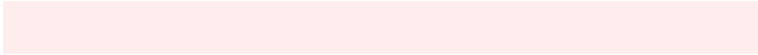
8AB1CE

Sweetspot

The Sweet Spot groups the original color and five complimentary colors.



D2A0A0



FFEDED



D2A0D2



807575



000000



808080

Same Dimension

The Same Dimension uses a secret algorithm to generate beautiful new colors.



D2A0A0



FFB5B5



D2B9A0



695E5E



A80000



290000

Inverse Universe

The Inverse Universe completely reimagines the original color for something new.



A0D2D2



B5FFFF



A0B9D2



5E6969



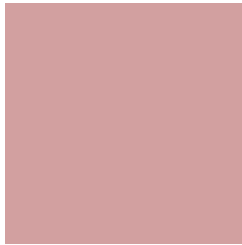
00A8A8



002929

Previews

White Background



This preview shows how the Hex color D2A0A0 looks on a white background.

Color Contrast Check

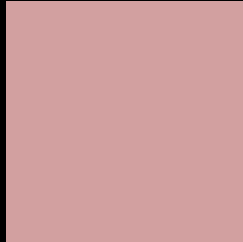
Large Text (above 18pt) WCAG AA × Fail

Any Text WCAG AA × Fail

Large Text (above 18pt) WCAG AAA × Fail

Any Text WCAG AAA × Fail

Black Background



This preview shows how the Hex color D2A0A0 looks on a black background.

Color Contrast Check

Large Text (above 18pt) WCAG AA ✓ Pass

Any Text WCAG AA ✓ Pass

Large Text (above 18pt) WCAG AAA ✓ Pass

Any Text WCAG AAA ✓ Pass

If you want to check with other color combinations, try the [Color Contrast Checker](#).

Hex D2A0A0 Background



This preview shows how black text looks on a background with the Hex color D2A0A0.

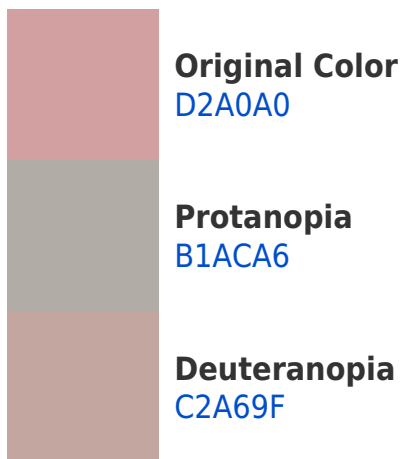


This preview shows how white text looks on a background with the Hex color D2A0A0.

Color Blindness Simulation

Color vision deficiency is a very complex topic, and I could not describe the different causes any better than Wikipedia does, so if you want to learn more, you should check out their [article about color blindness](#).

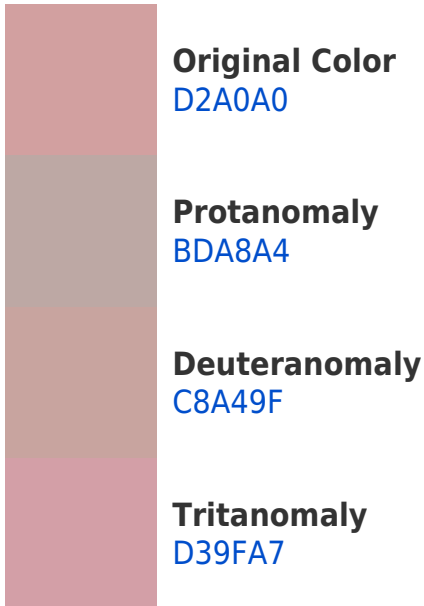
Dichromacy



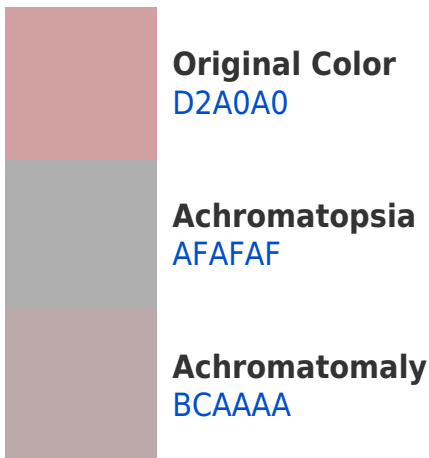


Tritanopia
D39EAB

Trichromacy



Monochromacy



CSS Examples

Text

The CSS property to change the color of the text to Hex D2A0A0 is called "color". The color property can be set on classes, ids or directly on the HTML element.

This example shows how text in the color #D2A0A0 looks like.

```
.text, #text, p{  
    color:#D2A0A0  
}
```

If you want to add a text shadow in that color use the text-shadow property, you can generate a text shadow directly with our [CSS Text Shadow Generator](#).

Here you see how black text with a 4 pixel #D2A0A0 colored shadow looks like.

```
.shadow{ text-shadow: 4px 4px 2px #D2A0A0
}
```

Border

The CSS property to change the border of an element to Hex D2A0A0 is called "border". The border property can be set on classes, ids or directly on the HTML element.

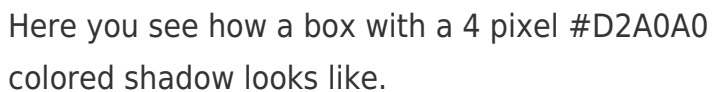
This example shows the color as border, it can be applied via the CSS property "border" or "border-color".

```
.border, #border, table{ border:4px solid
#D2A0A0 }
```

If only the border color should be changed use the property `border-color`.

```
.border{ border-color:#D2A0A0 }
```

If you want to add a box shadow in that color use:



Here you see how a box with a 4 pixel #D2A0A0 colored shadow looks like.

```
.boxshadow{ -moz-box-shadow:4px 4px 4px  
4px #D2A0A0; -webkit-box-shadow:4px 4px  
4px 4px #D2A0A0; box-shadow:4px 4px 4px  
4px #D2A0A0 }
```

Background

The CSS property to change the background color of an element to Hex D2A0A0 is called "background". The background property can be set on classes, ids or directly on the HTML element.

```
.background, #background, body{  
background:#D2A0A0 }
```

If only the background color should be changed can be used:

```
.background{ background-color:#D2A0A0 }
```

This example shows the color as background, it is applied via the CSS property "background".

To optimize and compress your CSS code, you can use our [online CSS compressor and optimizer](#) based on csstidy. If you want to create a linear or radial gradient as background or border, check our [CSS Gradient Generator](#).

Hey! You found this booklet interesting? Support Converting Colors with the new Membership Option!

The pro membership hides all ads, plus gives you double the colors in the color bucket, and more awesome pro features!

[Learn more, Memberships starting at \\$2.50/m!](#)

**Follow me
on Twitter!**

@ConvertingColor