

Converting Colors

Hex(D2A19F)

Have a look what the booklet for
Hex(D2A19F) contains.

Hex(D2A19F)	3
<i>Conversions</i>	4
<i>Details</i>	6
<i>Harmonies</i>	11
<i>Previews</i>	23
<i>Color Blindness Simulation</i>	26
<i>CSS Examples</i>	29

Color

Hex(D2A19F)

Conversions

Conversions Part 1

Format	Color
Hex	D2A19F
RGB	210, 161, 159
RGB Percent	82%, 63%, 62%
CMY	0.1765, 0.3686, 0.3765
CMYK	0.00, 0.23, 0.24, 0.18
HSL	2°, 36%, 72%
HSV	2°, 24%, 82%
XYZ	45.5812, 41.6946, 38.4464
YIQ	175.4230, 29.8460, 9.7660

Conversions

Conversions Part 2

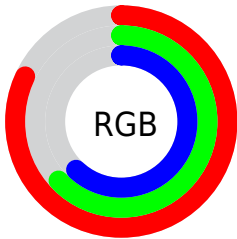
Format	Color
R _Y B	210, 161, 159
Decimal	13803935
CIE Lab	70.66, 17.83, 8.05
CIE LCh	71, 19.569, 24.301
Yxy	41.6946, 0.3626, 0.3316
Android (android.graphics.Color)	4291994015 (0xFFD2A19F)
YUV	175.4230, -8.0965, 30.3240
Hunter-Lab	64.5713, 13.0042, 9.8981

Details

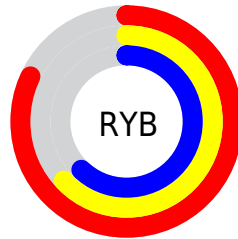
The Hex color **D2A19F** is a light color, and the websafe version is hex **CC9999**. A complement of this color would be **9FD0D2**, and the grayscale version is **AFAFAF**.

A 20% lighter version of the original color is **FFD8D6**, and **9B6D6C** is the 20% darker color. If you saturate the color by 10%, you get **D28D8A**, and if you desaturate by 10%, it is **D2B5B4**.

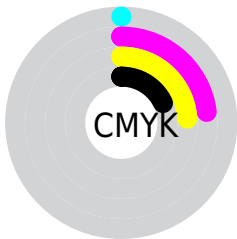
Distribution



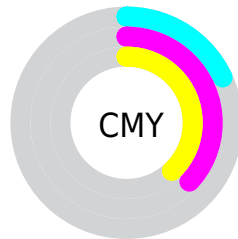
- Red (82%)
- Green (63%)
- Blue (62%)



- Red (82%)
- Yellow (63%)
- Blue (62%)



- Cyan (0%)
- Magenta (23%)
- Yellow (24%)
- Black (18%)



- Cyan (18%)
- Magenta (37%)
- Yellow (38%)

Brightness & Saturation Gradients

These gradients show how the Hex color D2A19F changes by changing the brightness by 10 percent. The first figure shows a shift by +10% for each color and the second figure -10%.

Similar to the brightness gradients but the following saturation gradients show a change of the Hex color D2A19F by changing the saturation by 10% instead.

 D2A19F

 D2A19F

FFFFFF

 B68785

 FFD8D6

 9B6D6C

 FFF4F2

 805553

 663D3C

 4D2727

 351212

 210000

 000000

 D2A19F

 D2A19F

 D28D8A

 D2B5B4

 D27975

 D2C9C9

 D26460

 D2DEDE

 D2504B

 D2F2F3

 D23C36

 D2FFFF

 D22821

 D2140C

 D20800

Harmonies

Analogous

The Analogous color harmony consists of three colors that are next to each other on the color wheel.



CEA1B1



D2A19F



CCA591

Triad

The Triadic color harmony groups three colors that are evenly spaced from another and form a triangle on the color wheel.



D2A19F



97B598



94AFD0

Complementary

The Complementary color scheme is a pair of colors which are on the opposite of each other on the color wheel.



D2A19F



9FD0D2

Split Complementary

Split-complementary colors differ from the complementary color scheme. The scheme consists of three colors, the original color and two neighbors of the complement color.



82B4C9



D2A19F



85B7A9

Square

The Square scheme is like the rectangle color scheme, but the four colors are evenly spaced on the color wheel.



D2A19F



ABB08C



7CB7BB



ACA9CD

Rectangle

The Rectangle color scheme consists of four colors that form a rectangle on the color wheel.



D2A19F



C3A88B



7CB7BB



8DB1CF

Sweetspot

The Sweet Spot groups the original color and five complimentary colors.



D2A19F



FFEEED



D29FD0



807675



000000



808080

Same Dimension

The Same Dimension uses a secret algorithm to generate beautiful new colors.



D2A19F



FFB8B5



D2BA9F



695F5E



A80700



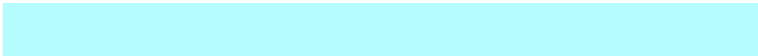
290200

Inverse Universe

The Inverse Universe completely reimagines the original color for something new.



9FD0D2



B5FCFF



9FB7D2



5E6869



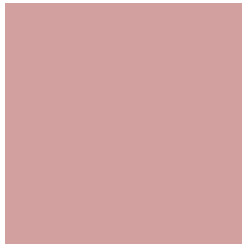
00A2A8



002729

Previews

White Background



This preview shows how the Hex color D2A19F looks on a white background.

Color Contrast Check

Large Text (above 18pt) WCAG AA × Fail

Any Text WCAG AA × Fail

Large Text (above 18pt) WCAG AAA × Fail

Any Text WCAG AAA × Fail

Black Background



Color Contrast Check

Large Text (above 18pt) WCAG AA ✓ Pass

Any Text WCAG AA ✓ Pass

Large Text (above 18pt) WCAG AAA ✓ Pass

Any Text WCAG AAA ✓ Pass

If you want to check with other color combinations, try the [Color Contrast Checker](#).

Hex D2A19F Background



This preview shows how black text looks on a background with the Hex color D2A19F.

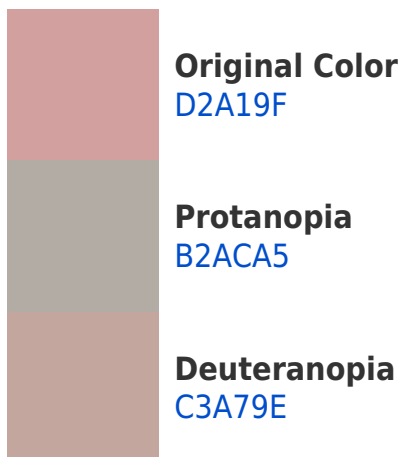


This preview shows how white text looks on a background with the Hex color D2A19F.

Color Blindness Simulation

Color vision deficiency is a very complex topic, and I could not describe the different causes any better than Wikipedia does, so if you want to learn more, you should check out their [article about color blindness](#).

Dichromacy





Tritanopia
D39FAB

Trichromacy



Original Color
D2A19F

Protanomaly
BEA8A3

Deuteranomaly
C8A59E

Tritanomaly
D3A0A7

Monochromacy



Original Color
D2A19F

Achromatopsia
AFAFAF

Achromatomaly
BCAAA9

CSS Examples

Text

The CSS property to change the color of the text to Hex D2A19F is called "color". The color property can be set on classes, ids or directly on the HTML element.

This example shows how text in the color #D2A19F looks like.

```
.text, #text, p{  
    color:#D2A19F  
}
```

If you want to add a text shadow in that color use the text-shadow property, you can generate a text shadow directly with our [CSS Text Shadow Generator](#).

Here you see how black text with a 4 pixel #D2A19F colored shadow looks like.

```
.shadow{ text-shadow: 4px 4px 2px #D2A19F
}
```

Border

The CSS property to change the border of an element to Hex D2A19F is called "border". The border property can be set on classes, ids or directly on the HTML element.

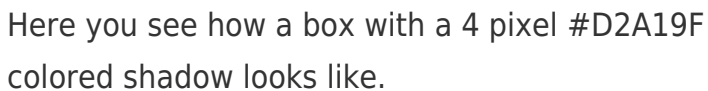
This example shows the color as border, it can be applied via the CSS property "border" or "border-color".

```
.border, #border, table{ border:4px solid
#D2A19F }
```

If only the border color should be changed use the property `border-color`.

```
.border{ border-color:#D2A19F }
```

If you want to add a box shadow in that color use:



Here you see how a box with a 4 pixel #D2A19F colored shadow looks like.

```
.boxshadow{ -moz-box-shadow:4px 4px 4px  
4px #D2A19F; -webkit-box-shadow:4px 4px  
4px 4px #D2A19F; box-shadow:4px 4px 4px  
4px #D2A19F }
```

Background

The CSS property to change the background color of an element to Hex D2A19F is called "background". The background property can be set on classes, ids or directly on the HTML element.

```
.background, #background, body{  
background:#D2A19F }
```

If only the background color should be changed can be used:

```
.background{ background-color:#D2A19F }
```

This example shows the color as background, it is applied via the CSS property "background".

To optimize and compress your CSS code, you can use our [online CSS compressor and optimizer](#) based on csstidy. If you want to create a linear or radial gradient as background or border, check our [CSS Gradient Generator](#).

Hey! You found this booklet interesting? Support Converting Colors with the new Membership Option!

The pro membership hides all ads, plus gives you double the colors in the color bucket, and more awesome pro features!

[Learn more, Memberships starting at \\$2.50/m!](#)

**Follow me
on Twitter!**

@ConvertingColor