

Converting Colors

Hex(D2A3A5)

Have a look what the booklet for
Hex(D2A3A5) contains.

Hex(D2A3A5)	3
<i>Conversions</i>	4
<i>Details</i>	6
<i>Harmonies</i>	11
<i>Previews</i>	23
<i>Color Blindness Simulation</i>	26
<i>CSS Examples</i>	29

Color

Hex(D2A3A5)

Conversions

Conversions Part 1

Format	Color
Hex	D2A3A5
RGB	210, 163, 165
RGB Percent	82%, 64%, 65%
CMY	0.1765, 0.3608, 0.3529
CMYK	0.00, 0.22, 0.21, 0.18
HSL	357°, 34%, 73%
HSV	357°, 22%, 82%
XYZ	46.4671, 42.6126, 41.3733
YIQ	177.2810, 27.3700, 10.5860

Conversions

Conversions Part 2

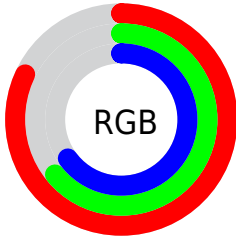
Format	Color
R _Y B	210, 163, 165
Decimal	13804453
CIE Lab	71.29, 17.63, 5.64
CIE LCh	71, 18.513, 17.743
Yxy	42.6126, 0.3562, 0.3267
Android (android.graphics.Color)	4291994533 (0xFFD2A3A5)
YUV	177.2810, -6.0545, 28.6946
Hunter-Lab	65.2784, 12.8245, 8.1170

Details

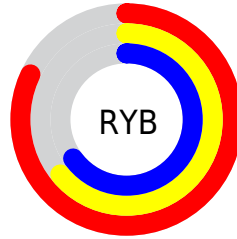
The Hex color **D2A3A5** is a light color, and the websafe version is hex **CC9999**. A complement of this color would be **A3D2D0**, and the grayscale version is **B1B1B1**.

A 20% lighter version of the original color is **FFDADC**, and **9B6F71** is the 20% darker color. If you saturate the color by 10%, you get **D28E91**, and if you desaturate by 10%, it is **D2B8B9**.

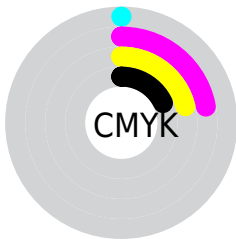
Distribution



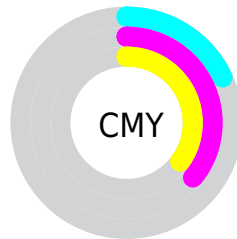
- Red (82%)
- Green (64%)
- Blue (65%)



- Red (82%)
- Yellow (64%)
- Blue (65%)



- Cyan (0%)
- Magenta (22%)
- Yellow (21%)
- Black (18%)



- Cyan (18%)
- Magenta (36%)
- Yellow (35%)

Brightness & Saturation Gradients

These gradients show how the Hex color D2A3A5 changes by changing the brightness by 10 percent. The first figure shows a shift by +10% for each color and the second figure -10%.

Similar to the brightness gradients but the following saturation gradients show a change of the Hex color D2A3A5 by changing the saturation by 10% instead.

 D2A3A5

 D2A3A5

FFFFFF

 B6898B

 FFDADC

 9B6F71

 FFF7F8

 805659

 663F42

 4D282B

 351317

 220000

 000000

 D2A3A5

 D2A3A5

 D28E91

 D2B8B9

 D2797D

 D2CDCD

 D26469

 D2E2E1

 D24F55

 D2F7F5

 D23A40

 D2FFFF

 D2252C

 D21018

 D20009

Harmonies

Analogous

The Analogous color harmony consists of three colors that are next to each other on the color wheel.



CCA3B6



D2A3A5



CEA696

Triad

The Triadic color harmony groups three colors that are evenly spaced from another and form a triangle on the color wheel.



D2A3A5



9EB598



93B2CF

Complementary

The Complementary color scheme is a pair of colors which are on the opposite of each other on the color wheel.



D2A3A5



A3D2D0

Split Complementary

Split-complementary colors differ from the complementary color scheme. The scheme consists of three colors, the original color and two neighbors of the complement color.



84B6C7



D2A3A5



8CB8A7

Square

The Square scheme is like the rectangle color scheme, but the four colors are evenly spaced on the color wheel.



D2A3A5



B1B18E



82B8B8



A9ADCE

Rectangle

The Rectangle color scheme consists of four colors that form a rectangle on the color wheel.



D2A3A5



C7A990



82B8B8



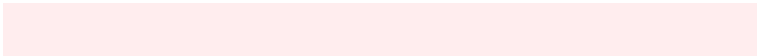
8DB4CD

Sweetspot

The Sweet Spot groups the original color and five complimentary colors.



D2A3A5



FFEDEE



D0A3D2



807576



000000



808080

Same Dimension

The Same Dimension uses a secret algorithm to generate beautiful new colors.



D2A3A5



FFBABD



D2B8A3



695E5F



A80007



290002

Inverse Universe

The Inverse Universe completely reimagines the original color for something new.



D2A3A5



FFBABD



A3BDD2



695E5F



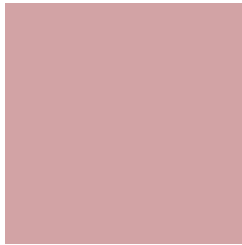
A80007



290002

Previews

White Background



This preview shows how the Hex color D2A3A5 looks on a white background.

Color Contrast Check

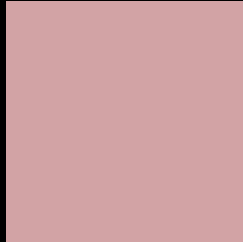
Large Text (above 18pt) WCAG AA × Fail

Any Text WCAG AA × Fail

Large Text (above 18pt) WCAG AAA × Fail

Any Text WCAG AAA × Fail

Black Background



This preview shows how the Hex color D2A3A5 looks on a black background.

Color Contrast Check

Large Text (above 18pt) WCAG AA ✓ Pass

Any Text WCAG AA ✓ Pass

Large Text (above 18pt) WCAG AAA ✓ Pass

Any Text WCAG AAA ✓ Pass

If you want to check with other color combinations, try the [Color Contrast Checker](#).

Hex D2A3A5 Background



This preview shows how black text looks on a background with the Hex color D2A3A5.



This preview shows how white text looks on a background with the Hex color D2A3A5.

Color Blindness Simulation

Color vision deficiency is a very complex topic, and I could not describe the different causes any better than Wikipedia does, so if you want to learn more, you should check out their [article about color blindness](#).

Dichromacy



Original Color
D2A3A5

Protanopia
B3AEAB

Deuteranopia
C4A9A4



Tritanopia
D3A2AE

Trichromacy



Original Color
D2A3A5

Protanomaly
BEAAA9

Deuteranomaly
C9A7A4

Tritanomaly
D3A2AB

Monochromacy



Original Color
D2A3A5

Achromatopsia
B1B1B1

Achromatomaly
BDACAD

CSS Examples

Text

The CSS property to change the color of the text to Hex D2A3A5 is called "color". The color property can be set on classes, ids or directly on the HTML element.

This example shows how text in the color #D2A3A5 looks like.

```
.text, #text, p{  
    color:#D2A3A5  
}
```

If you want to add a text shadow in that color use the text-shadow property, you can generate a text shadow directly with our [CSS Text Shadow Generator](#).

Here you see how black text with a 4 pixel #D2A3A5 colored shadow looks like.

```
.shadow{ text-shadow: 4px 4px 2px #D2A3A5
}
```

Border

The CSS property to change the border of an element to Hex D2A3A5 is called "border". The border property can be set on classes, ids or directly on the HTML element.

This example shows the color as border, it can be applied via the CSS property "border" or "border-color".

```
.border, #border, table{ border:4px solid
#D2A3A5 }
```

If only the border color should be changed use the property `border-color`.

```
.border{ border-color:#D2A3A5 }
```

If you want to add a box shadow in that color use:

Here you see how a box with a 4 pixel #D2A3A5 colored shadow looks like.

```
.boxshadow{ -moz-box-shadow:4px 4px 4px  
4px #D2A3A5; -webkit-box-shadow:4px 4px  
4px 4px #D2A3A5; box-shadow:4px 4px 4px  
4px #D2A3A5 }
```

Background

The CSS property to change the background color of an element to Hex D2A3A5 is called "background". The background property can be set on classes, ids or directly on the HTML element.

```
.background, #background, body{  
background:#D2A3A5 }
```

If only the background color should be changed can be used:

```
.background{ background-color:#D2A3A5 }
```

This example shows the color as background, it is applied via the CSS property "background".

To optimize and compress your CSS code, you can use our [online CSS compressor and optimizer](#) based on csstidy. If you want to create a linear or radial gradient as background or border, check our [CSS Gradient Generator](#).

Hey! You found this booklet interesting? Support Converting Colors with the new Membership Option!

The pro membership hides all ads, plus gives you double the colors in the color bucket, and more awesome pro features!

[Learn more, Memberships starting at \\$2.50/m!](#)

**Follow me
on Twitter!**

@ConvertingColor