

Converting Colors

Hex(D2A494)

Have a look what the booklet for
Hex(D2A494) contains.

Hex(D2A494)	3
<i>Conversions</i>	4
<i>Details</i>	6
<i>Harmonies</i>	11
<i>Previews</i>	23
<i>Color Blindness Simulation</i>	26
<i>CSS Examples</i>	29

Color

Hex(D2A494)

Conversions

Conversions Part 1

Format	Color
Hex	D2A494
RGB	210, 164, 148
RGB Percent	82%, 64%, 58%
CMY	0.1765, 0.3569, 0.4196
CMYK	0.00, 0.22, 0.30, 0.18
HSL	15°, 41%, 70%
HSV	15°, 30%, 82%
XYZ	45.1991, 42.3907, 33.8169
YIQ	175.9300, 32.5520, 4.7760

Conversions

Conversions Part 2

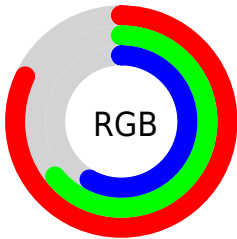
Format	Color
R _Y B	210, 170, 148
Decimal	13804692
CIE Lab	71.14, 14.67, 14.80
CIE LCh	71, 20.838, 45.247
Yxy	42.3907, 0.3723, 0.3492
Android (android.graphics.Color)	4291994772 (0xFFD2A494)
YUV	175.9300, -13.7695, 29.8794
Hunter-Lab	65.1081, 9.9783, 14.7807

Details

The Hex color **D2A494** is a light color, and the websafe version is hex **CC9999**. A complement of this color would be **94C2D2**, and the grayscale version is **B0B0B0**.

A 20% lighter version of the original color is **FFDBCA**, and **9A7061** is the 20% darker color. If you saturate the color by 10%, you get **D2947F**, and if you desaturate by 10%, it is **D2B4A9**.

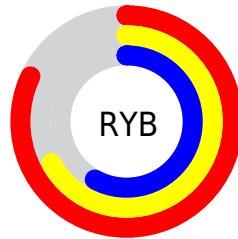
Distribution



Red (82%)

Green (64%)

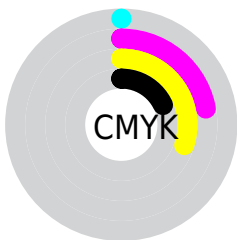
Blue (58%)



Red (82%)

Yellow (67%)

Blue (58%)

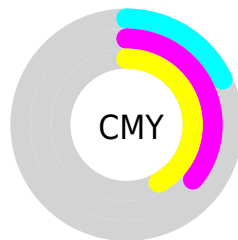


Cyan (0%)

Magenta (22%)

Yellow (30%)

Black (18%)



Cyan (18%)

Magenta (36%)

Yellow (42%)

Brightness & Saturation Gradients

These gradients show how the Hex color D2A494 changes by changing the brightness by 10 percent. The first figure shows a shift by +10% for each color and the second figure -10%.

Similar to the brightness gradients but the following saturation gradients show a change of the Hex color D2A494 by changing the saturation by 10% instead.

 D2A494

 D2A494

FFFFFF

 B68A7A

 FFDBCA

 9A7061

 FFF8E6

 80584A

 664033

 4C2A1E

 351505

 1F0000

 000000

 D2A494

 D2A494

 D2947F

 D2B4A9

 D2856A

 D2C3BE

 D27555

 D2D3D3

 D26640

 D2E2E8

 D2562B

 D2F2FD

 D24716

 D2FFFF

 D23701

 D23600

Harmonies

Analogous

The Analogous color harmony consists of three colors that are next to each other on the color wheel.



D6A1A5



D2A494



C5AA8A

Triad

The Triadic color harmony groups three colors that are evenly spaced from another and form a triangle on the color wheel.



D2A494



89B8A4



A5ADD3

Complementary

The Complementary color scheme is a pair of colors which are on the opposite of each other on the color wheel.



D2A494



94C2D2

Split Complementary

Split-complementary colors differ from the complementary color scheme. The scheme consists of three colors, the original color and two neighbors of the complement color.



8CB3D2



D2A494



7BB9B7

Square

The Square scheme is like the rectangle color scheme, but the four colors are evenly spaced on the color wheel.



D2A494



9DB593



7CB7C8



BDA6C9

Rectangle

The Rectangle color scheme consists of four colors that form a rectangle on the color wheel.



D2A494



B9AE88



7CB7C8



9CAFD4

Sweetspot

The Sweet Spot groups the original color and five complimentary colors.



D2A494



FFEEE8



D294C3



807571



000000



808080

Same Dimension

The Same Dimension uses a secret algorithm to generate beautiful new colors.



D2A494



FFBDA6



D2C394



69615E



A82B00



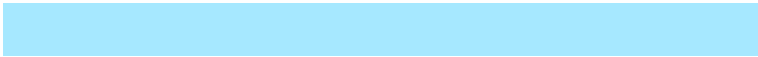
290B00

Inverse Universe

The Inverse Universe completely reimagines the original color for something new.



94C2D2



A6E8FF



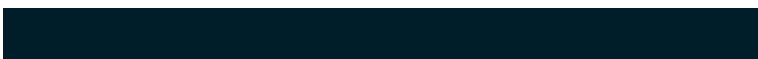
94A4D2



5E6669



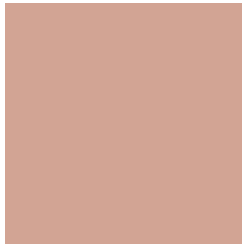
007DA8



001E29

Previews

White Background



This preview shows how the Hex color D2A94 looks on a white background.

Color Contrast Check

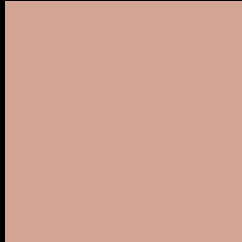
Large Text (above 18pt) WCAG AA × Fail

Any Text WCAG AA × Fail

Large Text (above 18pt) WCAG AAA × Fail

Any Text WCAG AAA × Fail

Black Background



This preview shows how the Hex color D2A494 looks on a black background.

Color Contrast Check

Large Text (above 18pt) WCAG AA ✓ Pass

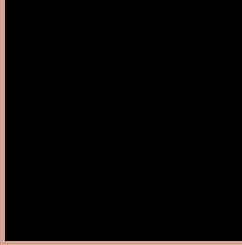
Any Text WCAG AA ✓ Pass

Large Text (above 18pt) WCAG AAA ✓ Pass

Any Text WCAG AAA ✓ Pass

If you want to check with other color combinations, try the [Color Contrast Checker](#).

Hex D2A494 Background



This preview shows how black text looks on a background with the Hex color D2A494.

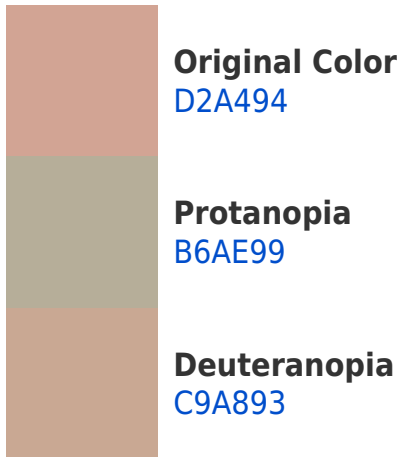


This preview shows how white text looks on a background with the Hex color D2A494.

Color Blindness Simulation

Color vision deficiency is a very complex topic, and I could not describe the different causes any better than Wikipedia does, so if you want to learn more, you should check out their [article about color blindness](#).

Dichromacy





Tritanopia
D5A0AD

Trichromacy



Original Color
D2A494

Protanomaly
C0AA97

Deuteranomaly
CCA793

Tritanomaly
D4A1A4

Monochromacy



Original Color
D2A494

Achromatopsia
B0B0B0

Achromatomaly
BCACA6

CSS Examples

Text

The CSS property to change the color of the text to Hex D2A494 is called "color". The color property can be set on classes, ids or directly on the HTML element.

This example shows how text in the color #D2A494 looks like.

```
.text, #text, p{  
    color:#D2A494  
}
```

If you want to add a text shadow in that color use the text-shadow property, you can generate a text shadow directly with our [CSS Text Shadow Generator](#).

Here you see how black text with a 4 pixel #D2A494 colored shadow looks like.

```
.shadow{ text-shadow: 4px 4px 2px #D2A494
}
```

Border

The CSS property to change the border of an element to Hex D2A494 is called "border". The border property can be set on classes, ids or directly on the HTML element.

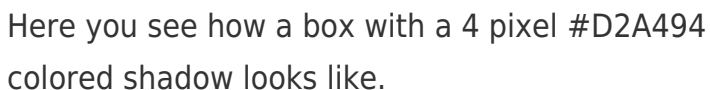
This example shows the color as border, it can be applied via the CSS property "border" or "border-color".

```
.border, #border, table{ border:4px solid
#D2A494 }
```

If only the border color should be changed use the property `border-color`.

```
.border{ border-color:#D2A494 }
```

If you want to add a box shadow in that color use:



Here you see how a box with a 4 pixel #D2A494 colored shadow looks like.

```
.boxshadow{ -moz-box-shadow:4px 4px 4px  
4px #D2A494; -webkit-box-shadow:4px 4px  
4px 4px #D2A494; box-shadow:4px 4px 4px  
4px #D2A494 }
```

Background

The CSS property to change the background color of an element to Hex D2A494 is called "background". The background property can be set on classes, ids or directly on the HTML element.

```
.background, #background, body{  
background:#D2A494 }
```

If only the background color should be changed can be used:

```
.background{ background-color:#D2A494 }
```

This example shows the color as background, it is applied via the CSS property "background".

To optimize and compress your CSS code, you can use our [online CSS compressor and optimizer](#) based on csstidy. If you want to create a linear or radial gradient as background or border, check our [CSS Gradient Generator](#).

Hey! You found this booklet interesting? Support Converting Colors with the new Membership Option!

The pro membership hides all ads, plus gives you double the colors in the color bucket, and more awesome pro features!

[Learn more, Memberships starting at \\$2.50/m!](#)

**Follow me
on Twitter!**

@ConvertingColor