

# Converting Colors

Hex(D2A99C)

Have a look what the booklet for  
Hex(D2A99C) contains.

<b>Hex(D2A99C)</b> .....	3
<b><i>Conversions</i></b> .....	4
<b><i>Details</i></b> .....	6
<b><i>Harmonies</i></b> .....	11
<b><i>Previews</i></b> .....	23
<b><i>Color Blindness Simulation</i></b> .....	26
<b><i>CSS Examples</i></b> .....	29

# **Color**

**Hex(D2A99C)**

# Conversions

## Conversions Part 1

Format	Color
Hex	D2A99C
RGB	210, 169, 156
RGB Percent	82%, 66%, 61%
CMY	0.1765, 0.3373, 0.3882
CMYK	0.00, 0.20, 0.26, 0.18
HSL	14°, 37%, 72%
HSV	14°, 26%, 82%
XYZ	46.7671, 44.4779, 37.5727
YIQ	179.7770, 28.6090, 4.6490

# Conversions

## Conversions Part 2

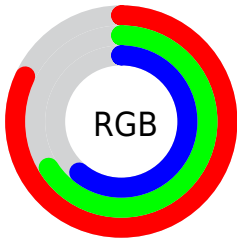
<b>Format</b>	<b>Color</b>
<b>R<sub>YB</sub></b>	210, 173, 156
Decimal	13805980
CIE Lab	72.55, 13.07, 12.39
CIE LCh	73, 18.003, 43.467
Yxy	44.4779, 0.3630, 0.3453
Android (android.graphics.Color)	4291996060 (0xFFD2A99C)
YUV	179.7770, -11.7221, 26.5056
Hunter-Lab	66.6917, 8.4612, 13.2815

# Details

The Hex color **D2A99C** is a light color, and the websafe version is hex **CC9999**. A complement of this color would be **9CC5D2**, and the grayscale version is **B4B4B4**.

A 20% lighter version of the original color is **FFE0D2**, and **9B7569** is the 20% darker color. If you saturate the color by 10%, you get **D29987**, and if you desaturate by 10%, it is **D2B9B1**.

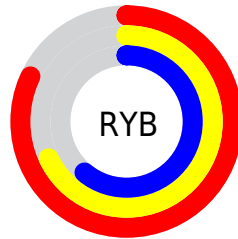
# Distribution



Red (82%)

Green (66%)

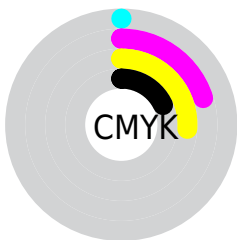
Blue (61%)



Red (82%)

Yellow (68%)

Blue (61%)

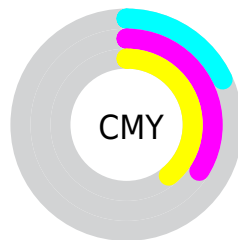


Cyan (0%)

Magenta (20%)

Yellow (26%)

Black (18%)



Cyan (18%)

Magenta (34%)

Yellow (39%)

# Brightness & Saturation Gradients

These gradients show how the Hex color D2A99C changes by changing the brightness by 10 percent. The first figure shows a shift by +10% for each color and the second figure -10%.

Similar to the brightness gradients but the following saturation gradients show a change of the Hex color D2A99C by changing the saturation by 10% instead.



 D2A99C

 D2A99C

FFFFFF

 B68F82

 FFE0D2

 9B7569

 FFFDEF

 805C51

 66443A

 4D2E24

 35190F

 200000

 000000

 D2A99C

 D2A99C

 D29987

 D2B9B1

 D28972

 D2C9C6

 D2795D

 D2D9DB

 D26948

 D2E9F0

 D25933

 D2F9FF

 D2491E

 D2FFFF

 D23909

 D23300

# Harmonies

## Analogous

The Analogous color harmony consists of three colors that are next to each other on the color wheel.



D4A7AB



D2A99C



C7AE93

# Triad

The Triadic color harmony groups three colors that are evenly spaced from another and form a triangle on the color wheel.



D2A99C



93BBA8



A9B1D2

# Complementary

The Complementary color scheme is a pair of colors which are on the opposite of each other on the color wheel.



D2A99C



9CC5D2

# Split Complementary

Split-complementary colors differ from the complementary color scheme. The scheme consists of three colors, the original color and two neighbors of the complement color.



95B6D1



D2A99C



88BCB9

# Square

The Square scheme is like the rectangle color scheme, but the four colors are evenly spaced on the color wheel.



D2A99C



A4B89A



88BAC8



BEABCA

# Rectangle

The Rectangle color scheme consists of four colors that form a rectangle on the color wheel.



D2A99C



BDB191



88BAC8



A2B3D2



# Sweetspot

The Sweet Spot groups the original color and five complimentary colors.



D2A99C



FFF0EB



D29CC5



807673



000000



808080



# Same Dimension

The Same Dimension uses a secret algorithm to generate beautiful new colors.



D2A99C



FFC3B0



D2C49C



69615E



A82900



290A00

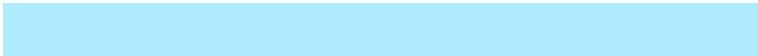


# Inverse Universe

The Inverse Universe completely reimagines the original color for something new.



9CC5D2



B0ECFF



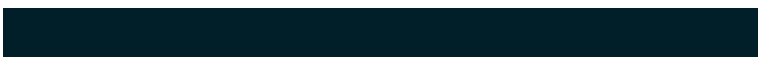
9CAAD2



5E6669



0080A8

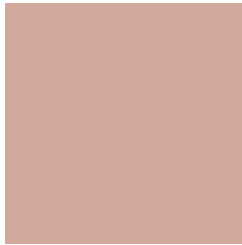


001F29



# Previews

## White Background



This preview shows how the Hex color D2A99C looks on a white background.

## Color Contrast Check

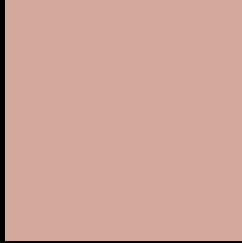
Large Text (above 18pt) WCAG AA × Fail

Any Text WCAG AA × Fail

Large Text (above 18pt) WCAG AAA × Fail

Any Text WCAG AAA × Fail

# Black Background



This preview shows how the Hex color D2A99C looks on a black background.

## Color Contrast Check

Large Text (above 18pt) WCAG AA ✓ Pass

Any Text WCAG AA ✓ Pass

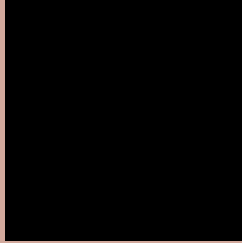
Large Text (above 18pt) WCAG AAA ✓ Pass

Any Text WCAG AAA ✓ Pass

If you want to check with other color combinations, try the [Color Contrast Checker](#).



## Hex D2A99C Background



This preview shows how black text looks on a background with the Hex color D2A99C.

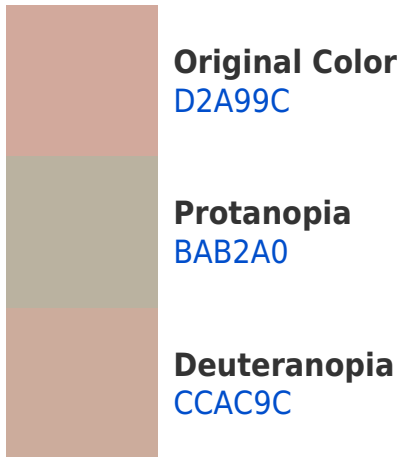


This preview shows how white text looks on a background with the Hex color D2A99C.

# Color Blindness Simulation

Color vision deficiency is a very complex topic, and I could not describe the different causes any better than Wikipedia does, so if you want to learn more, you should check out their [article about color blindness](#).

## Dichromacy





**Tritanopia**  
D5A6B2

# Trichromacy



**Original Color**  
D2A99C

**Protanomaly**  
C3AF9F

**Deuteranomaly**  
CEAB9C

**Tritanomaly**  
D4A7AA

# Monochromacy



**Original Color**  
D2A99C

**Achromatopsia**  
B4B4B4

**Achromatomaly**  
BFB0AB

# CSS Examples

## Text

The CSS property to change the color of the text to Hex D2A99C is called "color". The color property can be set on classes, ids or directly on the HTML element.

This example shows how text in the color #D2A99C looks like.

```
.text, #text, p{  
    color:#D2A99C  
}
```

If you want to add a text shadow in that color use the text-shadow property, you can generate a text shadow directly with our [CSS Text Shadow Generator](#).

Here you see how black text with a 4 pixel #D2A99C colored shadow looks like.

```
.shadow{ text-shadow: 4px 4px 2px #D2A99C  
}
```

## Border

The CSS property to change the border of an element to Hex D2A99C is called "border". The border property can be set on classes, ids or directly on the HTML element.

This example shows the color as border, it can be applied via the CSS property "border" or "border-color".

```
.border, #border, table{ border:4px solid  
#D2A99C }
```

If only the border color should be changed use the property `border-color`.

```
.border{ border-color:#D2A99C }
```

If you want to add a box shadow in that color use:

Here you see how a box with a 4 pixel #D2A99C colored shadow looks like.

```
.boxshadow{ -moz-box-shadow:4px 4px 4px  
4px #D2A99C; -webkit-box-shadow:4px 4px  
4px 4px #D2A99C; box-shadow:4px 4px 4px  
4px #D2A99C }
```

# Background

The CSS property to change the background color of an element to Hex D2A99C is called "background". The background property can be set on classes, ids or directly on the HTML element.

```
.background, #background, body{  
background:#D2A99C }
```

If only the background color should be changed can be used:

```
.background{ background-color:#D2A99C }
```

This example shows the color as background, it is applied via the CSS property "background".

To optimize and compress your CSS code, you can use our [online CSS compressor and optimizer](#) based on csstidy. If you want to create a linear or radial gradient as background or border, check our [CSS Gradient Generator](#).



Hey! You found this booklet interesting? Support Converting Colors with the new Membership Option!

The pro membership hides all ads, plus gives you double the colors in the color bucket, and more awesome pro features!

**[Learn more, Memberships starting at \\$2.50/m!](#)**

**Follow me  
on Twitter!**

@ConvertingColor