

Converting Colors

Hex(D2AAAB)

Have a look what the booklet for
Hex(D2AAAB) contains.

| | |
|--|----|
| Hex(D2AAAB) | 3 |
| <i>Conversions</i> | 4 |
| <i>Details</i> | 6 |
| <i>Harmonies</i> | 11 |
| <i>Previews</i> | 23 |
| <i>Color Blindness Simulation</i> | 26 |
| <i>CSS Examples</i> | 29 |

Color

Hex(D2AAAB)

Conversions

Conversions Part 1

| Format | Color |
|-------------|---------------------------|
| Hex | D2AAAB |
| RGB | 210, 170, 171 |
| RGB Percent | 82%, 67%, 67% |
| CMY | 0.1765, 0.3333, 0.3294 |
| CMYK | 0.00, 0.19, 0.19, 0.18 |
| HSL | 358°, 31%, 75% |
| HSV | 358°, 19%, 82% |
| XYZ | 48.3038, 45.3914, 44.7436 |
| YIQ | 182.0740, 23.5190, 8.7910 |

Conversions

Conversions Part 2

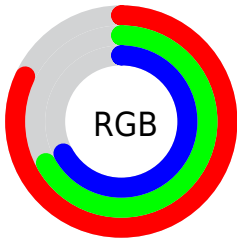
| Format | Color |
|-------------------------------------|-------------------------------|
| R _Y B | 210, 170, 171 |
| Decimal | 13806251 |
| CIE Lab | 73.15, 14.75, 5.01 |
| CIE LCh | 73, 15.577, 18.774 |
| Yxy | 45.3914, 0.3489, 0.3279 |
| Android (android.graphics.Color) | 4291996331 (0xFFD2AAAB) |
| YUV | 182.0740, -5.4595, 24.4911 |
| Hunter-Lab | 67.3731, 10.0742, 7.7857 |

Details

The Hex color **D2AAAB** is a light color, and the websafe version is hex **CC9999**. A complement of this color would be **AAD2D1**, and the grayscale version is **B6B6B6**.

A 20% lighter version of the original color is **FFE1E2**, and **9B7677** is the 20% darker color. If you saturate the color by 10%, you get **D29597**, and if you desaturate by 10%, it is **D2BFBF**.

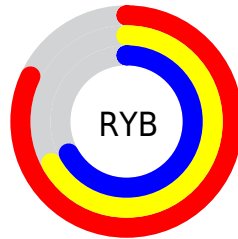
Distribution



Red (82%)

Green (67%)

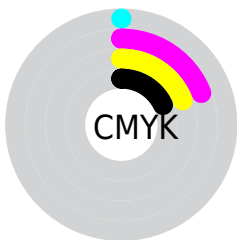
Blue (67%)



Red (82%)

Yellow (67%)

Blue (67%)

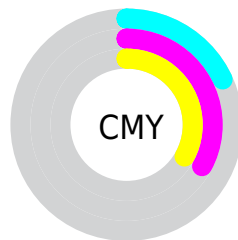


Cyan (0%)

Magenta (19%)

Yellow (19%)

Black (18%)



Cyan (18%)

Magenta (33%)

Yellow (33%)

Brightness & Saturation Gradients

These gradients show how the Hex color D2AAAB changes by changing the brightness by 10 percent. The first figure shows a shift by +10% for each color and the second figure -10%.

Similar to the brightness gradients but the following saturation gradients show a change of the Hex color D2AAAB by changing the saturation by 10% instead.



D2AAAB



D2AAAB

FFFFFF



B68F91



FFE1E2



9B7677

FFFEFF



815D5E



674547



4E2F30



36191B



230000



000000



D2AAAB



D2AAAB

 D29597

 D2BFBF

 D28082

 D2D4D4

 D26B6E

 D2E9E8

 D25659

 D2FEFD

 D24145

 D2FFFF

 D22C30

 D2171C

 D20207

 D20005

Harmonies

Analogous

The Analogous color harmony consists of three colors that are next to each other on the color wheel.



CDAABA



D2AAAB



CFAC9F

Triad

The Triadic color harmony groups three colors that are evenly spaced from another and form a triangle on the color wheel.



D2AAAB



A5B9A0



9EB6CF

Complementary

The Complementary color scheme is a pair of colors which are on the opposite of each other on the color wheel.



D2AAAB



AAD2D1

Split Complementary

Split-complementary colors differ from the complementary color scheme. The scheme consists of three colors, the original color and two neighbors of the complement color.



91BAC8



D2AAAB



97BCAE

Square

The Square scheme is like the rectangle color scheme, but the four colors are evenly spaced on the color wheel.



D2AAAB



B5B599



8FBCBC



AFB2CE

Rectangle

The Rectangle color scheme consists of four colors that form a rectangle on the color wheel.



D2AAAB



C8AF99



8FBCBC



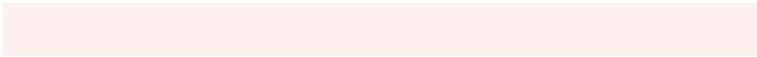
99B8CE

Sweetspot

The Sweet Spot groups the original color and five complimentary colors.



D2AAAB



FFF0F0



D1AAD2



807777



000000



808080

Same Dimension

The Same Dimension uses a secret algorithm to generate beautiful new colors.



D2AAAB



FFC4C6



D2BDAA



695E5E



A80004



290001

Inverse Universe

The Inverse Universe completely reimagines the original color for something new.



D2AAAB



FFC4C6



AABFD2



695E5E



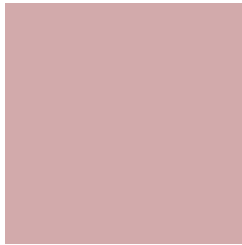
A80004



290001

Previews

White Background



This preview shows how the Hex color D2AAAB looks on a white background.

Color Contrast Check

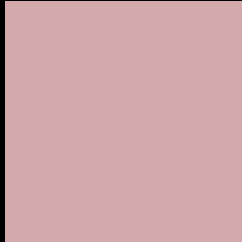
Large Text (above 18pt) WCAG AA × Fail

Any Text WCAG AA × Fail

Large Text (above 18pt) WCAG AAA × Fail

Any Text WCAG AAA × Fail

Black Background



This preview shows how the Hex color D2AAAB looks on a black background.

Color Contrast Check

Large Text (above 18pt) WCAG AA ✓ Pass

Any Text WCAG AA ✓ Pass

Large Text (above 18pt) WCAG AAA ✓ Pass

Any Text WCAG AAA ✓ Pass

If you want to check with other color combinations, try the [Color Contrast Checker](#).

Hex D2AAAB Background



This preview shows how black text looks on a background with the Hex color D2AAAB.

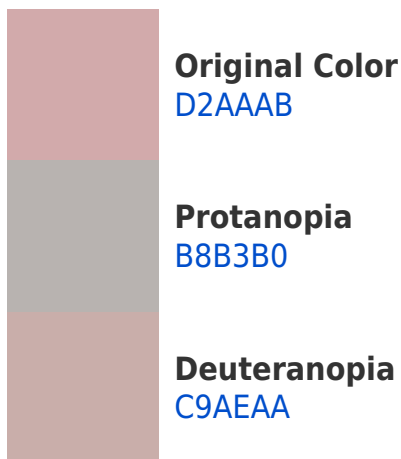


This preview shows how white text looks on a background with the Hex color D2AAAB.

Color Blindness Simulation

Color vision deficiency is a very complex topic, and I could not describe the different causes any better than Wikipedia does, so if you want to learn more, you should check out their [article about color blindness](#).

Dichromacy





Tritanopia
D3A8B5

Trichromacy



Original Color
D2AAAB

Protanomaly
C1B0AE

Deuteranomaly
CCADAA

Tritanomaly
D3A9B1

Monochromacy



Original Color
D2AAAB

Achromatopsia
B6B6B6

Achromatomaly
C0B2B2

CSS Examples

Text

The CSS property to change the color of the text to Hex D2AAAB is called "color". The color property can be set on classes, ids or directly on the HTML element.

This example shows how text in the color #D2AAAB looks like.

```
.text, #text, p{  
    color:#D2AAAB  
}
```

If you want to add a text shadow in that color use the text-shadow property, you can generate a text shadow directly with our [CSS Text Shadow Generator](#).

Here you see how black text with a 4 pixel #D2AAAB colored shadow looks like.

```
.shadow{ text-shadow: 4px 4px 2px #D2AAAB
}
```

Border

The CSS property to change the border of an element to Hex D2AAAB is called "border". The border property can be set on classes, ids or directly on the HTML element.

This example shows the color as border, it can be applied via the CSS property "border" or "border-color".

```
.border, #border, table{ border:4px solid
#D2AAAB }
```

If only the border color should be changed use the property `border-color`.

```
.border{ border-color:#D2AAAB }
```

If you want to add a box shadow in that color use:

Here you see how a box with a 4 pixel #D2AAAB colored shadow looks like.

```
.boxshadow{ -moz-box-shadow:4px 4px 4px  
4px #D2AAAB; -webkit-box-shadow:4px 4px  
4px 4px #D2AAAB; box-shadow:4px 4px 4px  
4px #D2AAAB }
```

Background

The CSS property to change the background color of an element to Hex D2AAAB is called "background". The background property can be set on classes, ids or directly on the HTML element.

```
.background, #background, body{  
background:#D2AAAB }
```

If only the background color should be changed can be used:

```
.background{ background-color:#D2AAAB }
```

This example shows the color as background, it is applied via the CSS property "background".

To optimize and compress your CSS code, you can use our [online CSS compressor and optimizer](#) based on csstidy. If you want to create a linear or radial gradient as background or border, check our [CSS Gradient Generator](#).

Hey! You found this booklet interesting? Support Converting Colors with the new Membership Option!

The pro membership hides all ads, plus gives you double the colors in the color bucket, and more awesome pro features!

[Learn more, Memberships starting at \\$2.50/m!](#)

**Follow me
on Twitter!**

@ConvertingColor