

# Converting Colors

Hex(D2AB84)

Have a look what the booklet for  
Hex(D2AB84) contains.

<b>Hex(D2AB84)</b> .....	3
<b><i>Conversions</i></b> .....	4
<b><i>Details</i></b> .....	6
<b><i>Harmonies</i></b> .....	11
<b><i>Previews</i></b> .....	23
<b><i>Color Blindness Simulation</i></b> .....	26
<b><i>CSS Examples</i></b> .....	29

# **Color**

**Hex(D2AB84)**

# Conversions

## Conversions Part 1

<b>Format</b>	<b>Color</b>
Hex	D2AB84
RGB	210, 171, 132
RGB Percent	82%, 67%, 52%
CMY	0.1765, 0.3294, 0.4824
CMYK	0.00, 0.19, 0.37, 0.18
HSL	30°, 46%, 67%
HSV	30°, 37%, 82%
XYZ	45.3061, 44.4934, 28.0300
YIQ	178.2150, 35.7630, -3.8610

# Conversions

## Conversions Part 2

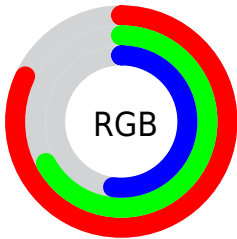
Format	Color
<b>R<sub>YB</sub></b>	210, 210, 132
Decimal	13806468
CIE Lab	72.56, 8.87, 25.46
CIE LCh	73, 26.957, 70.793
Yxy	44.4934, 0.3845, 0.3776
Android (android.graphics.Color)	4291996548 (0xFFD2AB84)
YUV	178.2150, -22.7840, 27.8754
Hunter-Lab	66.7034, 4.5094, 21.7776

# Details

The Hex color **D2AB84** is a light color, and the websafe version is hex **CC9966**. A complement of this color would be **84ABD2**, and the grayscale version is **B2B2B2**.

A 20% lighter version of the original color is **FFE2B9**, and **9A7752** is the 20% darker color. If you saturate the color by 10%, you get **D2A06F**, and if you desaturate by 10%, it is **D2B699**.

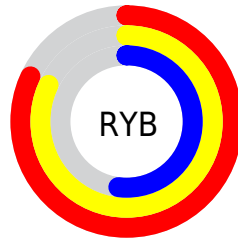
# Distribution



Red (82%)

Green (67%)

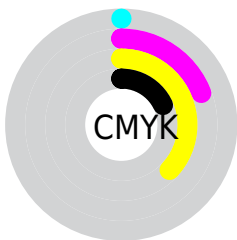
Blue (52%)



Red (82%)

Yellow (82%)

Blue (52%)

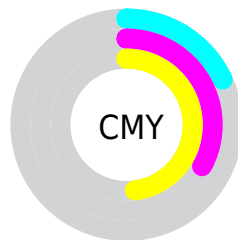


Cyan (0%)

Magenta (19%)

Yellow (37%)

Black (18%)



Cyan (18%)

Magenta (33%)

Yellow (48%)

# Brightness & Saturation Gradients

These gradients show how the Hex color D2AB84 changes by changing the brightness by 10 percent. The first figure shows a shift by +10% for each color and the second figure -10%.

Similar to the brightness gradients but the following saturation gradients show a change of the Hex color D2AB84 by changing the saturation by 10% instead.



 D2AB84

 D2AB84

FFFFFF

 B6916B

 FFE2B9

 9A7752

 FFFFD5

 7F5E3B

 FFFFF2

 654724

 4B300F

 331B00

 1C0200

 000000

 D2AB84

 D2AB84

 D2A06F

 D2B699

 D2965A

 D2C0AE

 D28B45

 D2CBC3

 D28130

 D2D5D8

 D2761B

 D2E0ED

 D26C06

 D2E AFF

 D26900

 D2F5FF

 D2FFFF

# Harmonies

## Analogous

The Analogous color harmony consists of three colors that are next to each other on the color wheel.



E1A493



D2AB84



BBB381

# Triad

The Triadic color harmony groups three colors that are evenly spaced from another and form a triangle on the color wheel.



D2AB84



6DC0BA



C1A9D7

# Complementary

The Complementary color scheme is a pair of colors which are on the opposite of each other on the color wheel.



D2AB84



84ABD2

# Split Complementary

Split-complementary colors differ from the complementary color scheme. The scheme consists of three colors, the original color and two neighbors of the complement color.



A0B1E2



D2AB84



6ABED1

# Square

The Square scheme is like the rectangle color scheme, but the four colors are evenly spaced on the color wheel.



D2AB84



83BFA1



7EB9E0



D9A2C3

# Rectangle

The Rectangle color scheme consists of four colors that form a rectangle on the color wheel.



D2AB84



A9B887



7EB9E0



B7ABDC



# Sweetspot

The Sweet Spot groups the original color and five complimentary colors.



D2AB84



FFF1E3



D284AB



80776F



000000



808080



# Same Dimension

The Same Dimension uses a secret algorithm to generate beautiful new colors.



D2AB84



FFC68C



D2D184



69635E



A85400



291400

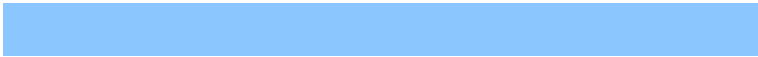


# Inverse Universe

The Inverse Universe completely reimagines the original color for something new.



84ABD2



8CC6FF



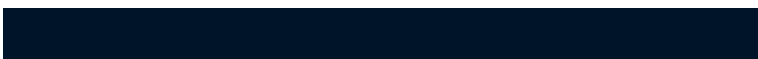
8484D2



5E6369



0054A8

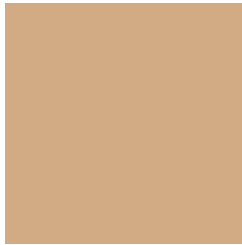


001429



# Previews

## White Background



This preview shows how the Hex color D2AB84 looks on a white background.

## Color Contrast Check

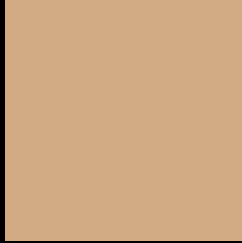
Large Text (above 18pt) WCAG AA × Fail

Any Text WCAG AA × Fail

Large Text (above 18pt) WCAG AAA × Fail

Any Text WCAG AAA × Fail

# Black Background



This preview shows how the Hex color D2AB84 looks on a black background.

## Color Contrast Check

Large Text (above 18pt) WCAG AA ✓ Pass

Any Text WCAG AA ✓ Pass

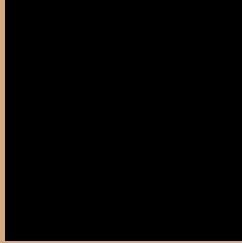
Large Text (above 18pt) WCAG AAA ✓ Pass

Any Text WCAG AAA ✓ Pass

If you want to check with other color combinations, try the [Color Contrast Checker](#).



## Hex D2AB84 Background



This preview shows how black text looks on a background with the Hex color D2AB84.



This preview shows how white text looks on a background with the Hex color D2AB84.

# Color Blindness Simulation

Color vision deficiency is a very complex topic, and I could not describe the different causes any better than Wikipedia does, so if you want to learn more, you should check out their [article about color blindness](#).

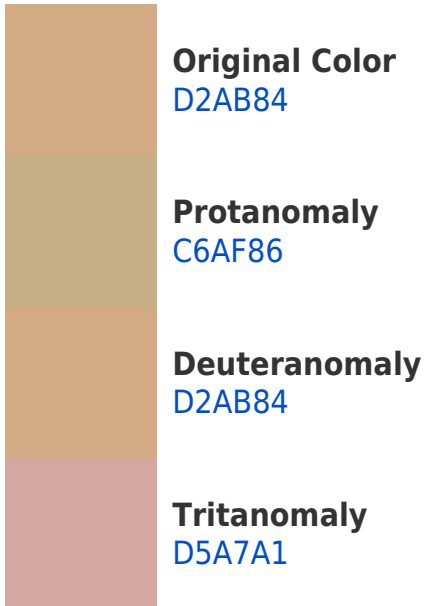
## Dichromacy



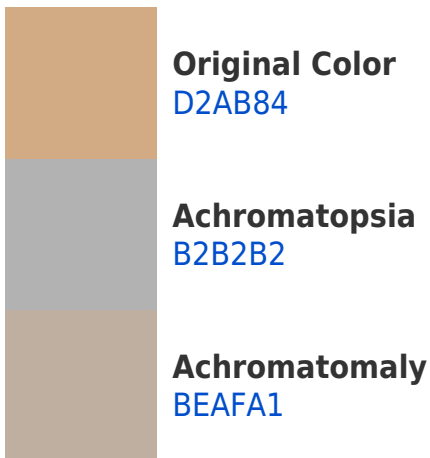


**Tritanopia**  
D7A5B2

# Trichromacy



# Monochromacy



# CSS Examples

## Text

The CSS property to change the color of the text to Hex D2AB84 is called "color". The color property can be set on classes, ids or directly on the HTML element.

This example shows how text in the color #D2AB84 looks like.

```
.text, #text, p{  
    color:#D2AB84  
}
```

If you want to add a text shadow in that color use the text-shadow property, you can generate a text shadow directly with our [CSS Text Shadow Generator](#).

Here you see how black text with a 4 pixel #D2AB84 colored shadow looks like.

```
.shadow{ text-shadow: 4px 4px 2px #D2AB84
}
```

## Border

The CSS property to change the border of an element to Hex D2AB84 is called "border". The border property can be set on classes, ids or directly on the HTML element.

This example shows the color as border, it can be applied via the CSS property "border" or "border-color".

```
.border, #border, table{ border:4px solid
#D2AB84 }
```

If only the border color should be changed use the property border-color.

```
.border{ border-color:#D2AB84 }
```

If you want to add a box shadow in that color use:

Here you see how a box with a 4 pixel #D2AB84 colored shadow looks like.

```
.boxshadow{ -moz-box-shadow:4px 4px 4px  
4px #D2AB84; -webkit-box-shadow:4px 4px  
4px 4px #D2AB84; box-shadow:4px 4px 4px  
4px #D2AB84 }
```

# Background

The CSS property to change the background color of an element to Hex D2AB84 is called "background". The background property can be set on classes, ids or directly on the HTML element.

```
.background, #background, body{  
background:#D2AB84 }
```

If only the background color should be changed can be used:

```
.background{ background-color:#D2AB84 }
```

This example shows the color as background, it is applied via the CSS property "background".

To optimize and compress your CSS code, you can use our [online CSS compressor and optimizer](#) based on csstidy. If you want to create a linear or radial gradient as background or border, check our [CSS Gradient Generator](#).



Hey! You found this booklet interesting? Support Converting Colors with the new Membership Option!

The pro membership hides all ads, plus gives you double the colors in the color bucket, and more awesome pro features!

**[Learn more, Memberships starting at \\$2.50/m!](#)**

**Follow me  
on Twitter!**

@ConvertingColor