

Converting Colors

Hex(D2ADB0)

Have a look what the booklet for
Hex(D2ADB0) contains.

Hex(D2ADB0)	3
<i>Conversions</i>	4
<i>Details</i>	6
<i>Harmonies</i>	11
<i>Previews</i>	23
<i>Color Blindness Simulation</i>	26
<i>CSS Examples</i>	29

Color

Hex(D2ADB0)

Conversions

Conversions Part 1

Format	Color
Hex	D2ADB0
RGB	210, 173, 176
RGB Percent	82%, 68%, 69%
CMY	0.1765, 0.3216, 0.3098
CMYK	0.00, 0.18, 0.16, 0.18
HSL	355°, 29%, 75%
HSV	355°, 18%, 82%
XYZ	49.3584, 46.7234, 47.4913
YIQ	184.4050, 21.0890, 8.7770

Conversions

Conversions Part 2

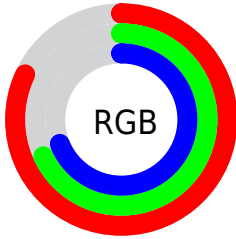
Format	Color
R _Y B	210, 173, 176
Decimal	13807024
CIE Lab	74.01, 13.91, 3.52
CIE LCh	74, 14.347, 14.197
Yxy	46.7234, 0.3438, 0.3254
Android (android.graphics.Color)	4291997104 (0xFFD2ADB0)
YUV	184.4050, -4.1437, 22.4468
Hunter-Lab	68.3545, 9.2735, 6.6546

Details

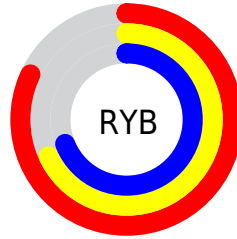
The Hex color **D2ADB0** is a light color, and the websafe version is hex **CC9999**. A complement of this color would be **ADD2CF**, and the grayscale version is **B8B8B8**.

A 20% lighter version of the original color is **FFE5E8**, and **9B797C** is the 20% darker color. If you saturate the color by 10%, you get **D2989D**, and if you desaturate by 10%, it is **D2C2C3**.

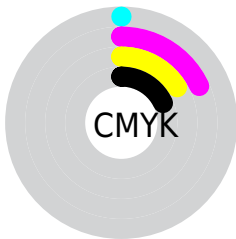
Distribution



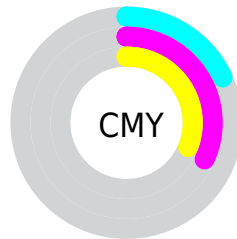
- Red (82%)
- Green (68%)
- Blue (69%)



- Red (82%)
- Yellow (68%)
- Blue (69%)



- Cyan (0%)
- Magenta (18%)
- Yellow (16%)
- Black (18%)



- Cyan (18%)
- Magenta (32%)
- Yellow (31%)

Brightness & Saturation Gradients

These gradients show how the Hex color D2ADB0 changes by changing the brightness by 10 percent. The first figure shows a shift by +10% for each color and the second figure -10%.

Similar to the brightness gradients but the following saturation gradients show a change of the Hex color D2ADB0 by changing the saturation by 10% instead.

 D2ADB0

 D2ADB0

FFFFFF

 B69295

 FFE5E8

 9B797C

 816063

 67484B

 4F3134

 371C1F

 230307

 000000

 D2ADB0

 D2ADB0

 D2989D

 D2C2C3

 D28389

 D2D7D7

 D26E76

 D2ECEA

 D25963

 D2FFFD

 D24450

 D2FFFF

 D22F3C

 D21A29

 D20516

 D20011

Harmonies

Analogous

The Analogous color harmony consists of three colors that are next to each other on the color wheel.



CCAEBD



D2ADB0



D0AFA4

Triad

The Triadic color harmony groups three colors that are evenly spaced from another and form a triangle on the color wheel.



D2ADB0



ABBBA3



A0B9CF

Complementary

The Complementary color scheme is a pair of colors which are on the opposite of each other on the color wheel.



D2ADB0



ADD2CF

Split Complementary

Split-complementary colors differ from the complementary color scheme. The scheme consists of three colors, the original color and two neighbors of the complement color.



96BCC8



D2ADB0



9DBDAE

Square

The Square scheme is like the rectangle color scheme, but the four colors are evenly spaced on the color wheel.



D2ADB0



BAB79C



95BEBC



B0B5CF

Rectangle

The Rectangle color scheme consists of four colors that form a rectangle on the color wheel.



D2ADB0



CBB19F



95BEBC



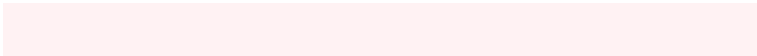
9BBACD

Sweetspot

The Sweet Spot groups the original color and five complimentary colors.



D2ADB0



FFF2F3



CFADD2



807878



000000



808080

Same Dimension

The Same Dimension uses a secret algorithm to generate beautiful new colors.



D2ADB0



FFC9CE



D2BCAD



695E5F



A8000E



290003

Inverse Universe

The Inverse Universe completely reimagines the original color for something new.



D2ADB0



FFC9CE



ADC3D2



695E5F



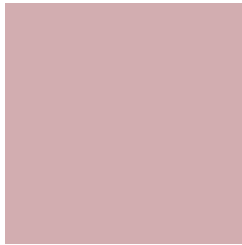
A8000E



290003

Previews

White Background



This preview shows how the Hex color D2ADB0 looks on a white background.

Color Contrast Check

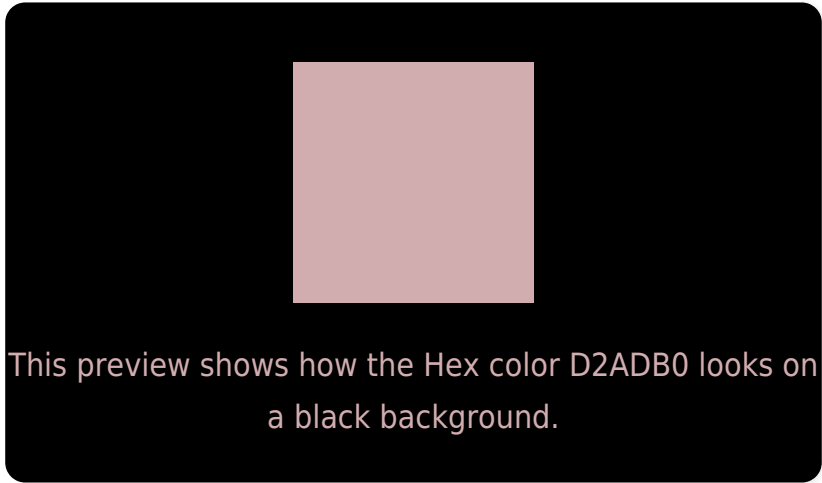
Large Text (above 18pt) WCAG AA × Fail

Any Text WCAG AA × Fail

Large Text (above 18pt) WCAG AAA × Fail

Any Text WCAG AAA × Fail

Black Background



Color Contrast Check

Large Text (above 18pt) WCAG AA ✓ Pass

Any Text WCAG AA ✓ Pass

Large Text (above 18pt) WCAG AAA ✓ Pass

Any Text WCAG AAA ✓ Pass

If you want to check with other color combinations, try the [Color Contrast Checker](#).

Hex D2ADB0 Background



This preview shows how black text looks on a background with the Hex color D2ADB0.

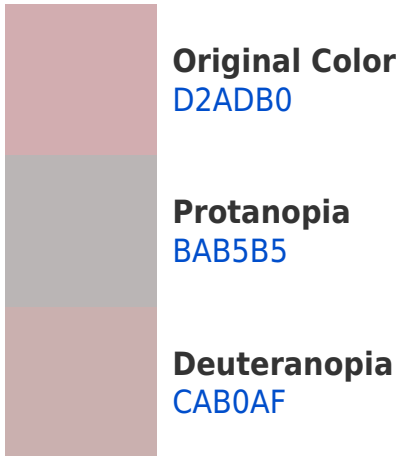


This preview shows how white text looks on a background with the Hex color D2ADB0.

Color Blindness Simulation

Color vision deficiency is a very complex topic, and I could not describe the different causes any better than Wikipedia does, so if you want to learn more, you should check out their [article about color blindness](#).

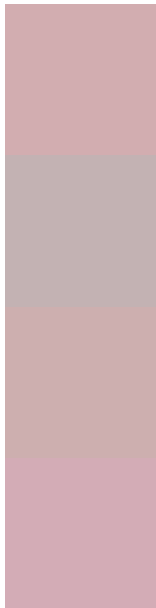
Dichromacy





Tritanopia
D3ACB9

Trichromacy



Original Color
D2ADB0

Protanomaly
C3B2B3

Deuteranomaly
CDFAF

Tritanomaly
D3ACB6

Monochromacy



Original Color
D2ADB0

Achromatopsia
B8B8B8

Achromatomaly
C1B4B5

CSS Examples

Text

The CSS property to change the color of the text to Hex D2ADB0 is called "color". The color property can be set on classes, ids or directly on the HTML element.

This example shows how text in the color #D2ADB0 looks like.

```
.text, #text, p{  
  color:#D2ADB0  
}
```

If you want to add a text shadow in that color use the text-shadow property, you can generate a text shadow directly with our [CSS Text Shadow Generator](#).

Here you see how black text with a 4 pixel #D2ADB0 colored shadow looks like.

```
.shadow{ text-shadow: 4px 4px 2px #D2ADB0
}
```

Border

The CSS property to change the border of an element to Hex D2ADB0 is called "border". The border property can be set on classes, ids or directly on the HTML element.

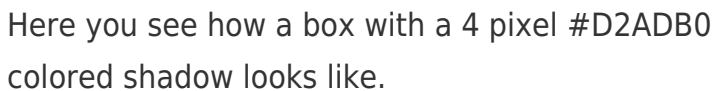
This example shows the color as border, it can be applied via the CSS property "border" or "border-color".

```
.border, #border, table{ border:4px solid
#D2ADB0 }
```

If only the border color should be changed use the property `border-color`.

```
.border{ border-color:#D2ADB0 }
```

If you want to add a box shadow in that color use:



Here you see how a box with a 4 pixel #D2ADB0 colored shadow looks like.

```
.boxshadow{ -moz-box-shadow:4px 4px 4px  
4px #D2ADB0; -webkit-box-shadow:4px 4px  
4px 4px #D2ADB0; box-shadow:4px 4px 4px  
4px #D2ADB0 }
```

Background

The CSS property to change the background color of an element to Hex D2ADB0 is called "background". The background property can be set on classes, ids or directly on the HTML element.

```
.background, #background, body{  
background:#D2ADB0 }
```

If only the background color should be changed can be used:

```
.background{ background-color:#D2ADB0 }
```

This example shows the color as background, it is applied via the CSS property "background".

To optimize and compress your CSS code, you can use our [online CSS compressor and optimizer](#) based on csstidy. If you want to create a linear or radial gradient as background or border, check our [CSS Gradient Generator](#).

Hey! You found this booklet interesting? Support Converting Colors with the new Membership Option!

The pro membership hides all ads, plus gives you double the colors in the color bucket, and more awesome pro features!

[Learn more, Memberships starting at \\$2.50/m!](#)

**Follow me
on Twitter!**

@ConvertingColor