

Converting Colors

Hex(D2AE8B)

Have a look what the booklet for
Hex(D2AE8B) contains.

| | |
|--|----|
| Hex(D2AE8B) | 3 |
| <i>Conversions</i> | 4 |
| <i>Details</i> | 6 |
| <i>Harmonies</i> | 11 |
| <i>Previews</i> | 23 |
| <i>Color Blindness Simulation</i> | 26 |
| <i>CSS Examples</i> | 29 |

Color

Hex(D2AE8B)

Conversions

Conversions Part 1

| Format | Color |
|-------------|----------------------------|
| Hex | D2AE8B |
| RGB | 210, 174, 139 |
| RGB Percent | 82%, 68%, 55% |
| CMY | 0.1765, 0.3176, 0.4549 |
| CMYK | 0.00, 0.17, 0.34, 0.18 |
| HSL | 30°, 44%, 68% |
| HSV | 30°, 34%, 82% |
| XYZ | 46.3746, 45.8378, 30.8295 |
| YIQ | 180.7740, 32.6910, -3.2530 |

Conversions

Conversions Part 2

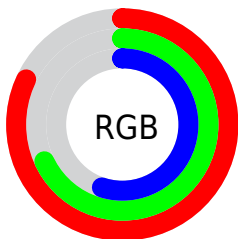
| Format | Color |
|-------------------------------------|--------------------------------|
| R_{YB} | 210, 208, 139 |
| Decimal | 13807243 |
| CIE Lab | 73.44, 8.11, 22.88 |
| CIE LCh | 73, 24.271, 70.484 |
| Yxy | 45.8378, 0.3769, 0.3725 |
| Android (android.graphics.Color) | 4291997323 (0xFFD2AE8B) |
| YUV | 180.7740, -20.5946, 25.6312 |
| Hunter-Lab | 67.7036, 3.7848, 20.3943 |

Details

The Hex color **D2AE8B** is a light color, and the websafe version is hex **CC9966**. A complement of this color would be **8BAFD2**, and the grayscale version is **B5B5B5**.

A 20% lighter version of the original color is **FFE5C1**, and **9A7A59** is the 20% darker color. If you saturate the color by 10%, you get **D2A376**, and if you desaturate by 10%, it is **D2B9A0**.

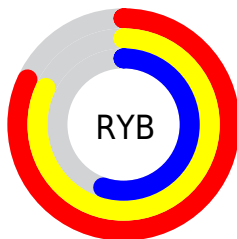
Distribution



Red (82%)

Green (68%)

Blue (55%)



Red (82%)

Yellow (82%)

Blue (55%)

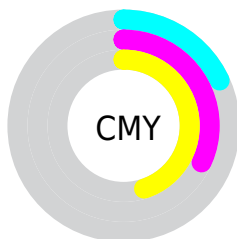


Cyan (0%)

Magenta (17%)

Yellow (34%)

Black (18%)



Cyan (18%)

Magenta (32%)

Yellow (45%)

Brightness & Saturation Gradients

These gradients show how the Hex color D2AE8B changes by changing the brightness by 10 percent. The first figure shows a shift by +10% for each color and the second figure -10%.

Similar to the brightness gradients but the following saturation gradients show a change of the Hex color D2AE8B by changing the saturation by 10% instead.

 D2AE8B

 D2AE8B

FFFFFF

 B69371

 FFE5C1

 9A7A59

 FFFFDD

 7F6141

 FFFFF9

 65492B

 4C3315

 351D00

 1D0600

 000000

 D2AE8B

 D2AE8B

 D2A376

 D2B9A0

 D29961

 D2C3B5

 D28E4C

 D2CECA

 D28337

 D2D9DF

 D27922

 D2E3F4

 D26E0D

 D2EEFF

 D26800

 D2F9FF

 D2FFFF

Harmonies

Analogous

The Analogous color harmony consists of three colors that are next to each other on the color wheel.



DFA898



D2AE8B



BDB589

Triad

The Triadic color harmony groups three colors that are evenly spaced from another and form a triangle on the color wheel.



D2AE8B



79C1BC



C2ACD6

Complementary

The Complementary color scheme is a pair of colors which are on the opposite of each other on the color wheel.



D2AE8B



8BAFD2

Split Complementary

Split-complementary colors differ from the complementary color scheme. The scheme consists of three colors, the original color and two neighbors of the complement color.



A4B4E0



D2AE8B



76BFD0

Square

The Square scheme is like the rectangle color scheme, but the four colors are evenly spaced on the color wheel.



D2AE8B



8BC0A5



87BBDE



D8A6C4

Rectangle

The Rectangle color scheme consists of four colors that form a rectangle on the color wheel.



D2AE8B



ADBA8E



87BBDE



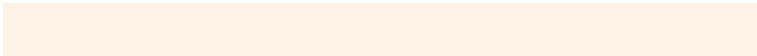
B9AFDB

Sweetspot

The Sweet Spot groups the original color and five complimentary colors.



D2AE8B



FFF2E6



D28BB0



807870



000000



808080

Same Dimension

The Same Dimension uses a secret algorithm to generate beautiful new colors.



D2AE8B



FFCA96



D2D18B



69635E



A85300



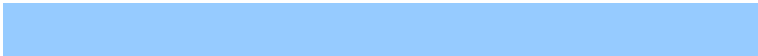
291400

Inverse Universe

The Inverse Universe completely reimagines the original color for something new.



8BAFD2



96CBFF



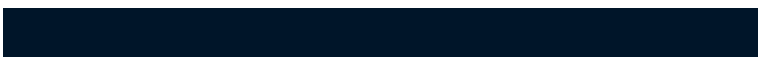
8B8CD2



5E6369



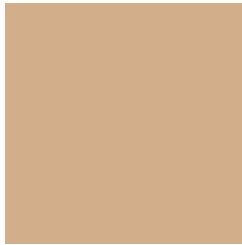
0055A8



001529

Previews

White Background



This preview shows how the Hex color D2AE8B looks on a white background.

Color Contrast Check

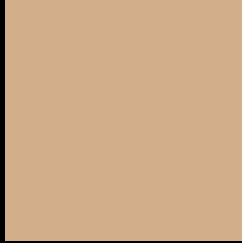
Large Text (above 18pt) WCAG AA × Fail

Any Text WCAG AA × Fail

Large Text (above 18pt) WCAG AAA × Fail

Any Text WCAG AAA × Fail

Black Background



This preview shows how the Hex color D2AE8B looks on a black background.

Color Contrast Check

Large Text (above 18pt) WCAG AA ✓ Pass

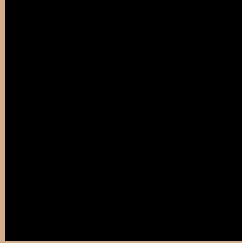
Any Text WCAG AA ✓ Pass

Large Text (above 18pt) WCAG AAA ✓ Pass

Any Text WCAG AAA ✓ Pass

If you want to check with other color combinations, try the [Color Contrast Checker](#).

Hex D2AE8B Background



This preview shows how black text looks on a background with the Hex color D2AE8B.



This preview shows how white text looks on a background with the Hex color D2AE8B.

Color Blindness Simulation

Color vision deficiency is a very complex topic, and I could not describe the different causes any better than Wikipedia does, so if you want to learn more, you should check out their [article about color blindness](#).

Dichromacy



Original Color
D2AE8B

Protanopia
C0B48E

Deuteranopia
D4AD8B

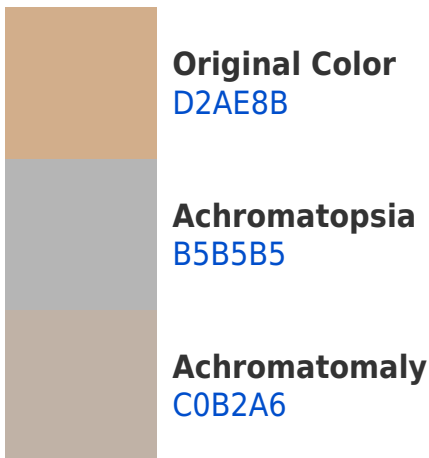


Tritanopia
D7A8B5

Trichromacy



Monochromacy



CSS Examples

Text

The CSS property to change the color of the text to Hex D2AE8B is called "color". The color property can be set on classes, ids or directly on the HTML element.

This example shows how text in the color #D2AE8B looks like.

```
.text, #text, p{  
    color:#D2AE8B  
}
```

If you want to add a text shadow in that color use the text-shadow property, you can generate a text shadow directly with our [CSS Text Shadow Generator](#).

Here you see how black text with a 4 pixel #D2AE8B colored shadow looks like.

```
.shadow{ text-shadow: 4px 4px 2px #D2AE8B
}
```

Border

The CSS property to change the border of an element to Hex D2AE8B is called "border". The border property can be set on classes, ids or directly on the HTML element.

This example shows the color as border, it can be applied via the CSS property "border" or "border-color".

```
.border, #border, table{ border:4px solid
#D2AE8B }
```

If only the border color should be changed use the property `border-color`.

```
.border{ border-color:#D2AE8B }
```

If you want to add a box shadow in that color use:

Here you see how a box with a 4 pixel #D2AE8B colored shadow looks like.

```
.boxshadow{ -moz-box-shadow:4px 4px 4px  
4px #D2AE8B; -webkit-box-shadow:4px 4px  
4px 4px #D2AE8B; box-shadow:4px 4px 4px  
4px #D2AE8B }
```

Background

The CSS property to change the background color of an element to Hex D2AE8B is called "background". The background property can be set on classes, ids or directly on the HTML element.

```
.background, #background, body{  
background:#D2AE8B }
```

If only the background color should be changed can be used:

```
.background{ background-color:#D2AE8B }
```

This example shows the color as background, it is applied via the CSS property "background".

To optimize and compress your CSS code, you can use our [online CSS compressor and optimizer](#) based on csstidy. If you want to create a linear or radial gradient as background or border, check our [CSS Gradient Generator](#).

Hey! You found this booklet interesting? Support Converting Colors with the new Membership Option!

The pro membership hides all ads, plus gives you double the colors in the color bucket, and more awesome pro features!

[Learn more, Memberships starting at \\$2.50/m!](#)

**Follow me
on Twitter!**

@ConvertingColor