

Converting Colors

Hex(D2AFAC)

Have a look what the booklet for
Hex(D2AFAC) contains.

Hex(D2AFAC)	3
<i>Conversions</i>	4
<i>Details</i>	6
<i>Harmonies</i>	11
<i>Previews</i>	23
<i>Color Blindness Simulation</i>	26
<i>CSS Examples</i>	29

Color

Hex(D2AFAC)

Conversions

Conversions Part 1

Format	Color
Hex	D2AFAC
RGB	210, 175, 172
RGB Percent	82%, 69%, 67%
CMY	0.1765, 0.3137, 0.3255
CMYK	0.00, 0.17, 0.18, 0.18
HSL	5°, 30%, 75%
HSV	5°, 18%, 82%
XYZ	49.3547, 47.3401, 45.5660
YIQ	185.1230, 21.8230, 6.4870

Conversions

Conversions Part 2

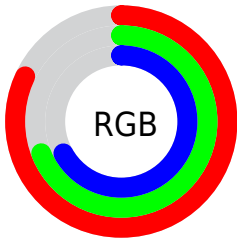
Format	Color
R _Y B	210, 175, 172
Decimal	13807532
CIE Lab	74.41, 12.20, 6.28
CIE LCh	74, 13.719, 27.227
Yxy	47.3401, 0.3469, 0.3328
Android (android.graphics.Color)	4291997612 (0xFFD2AFAC)
YUV	185.1230, -6.4696, 21.8171
Hunter-Lab	68.8042, 7.6346, 8.8977

Details

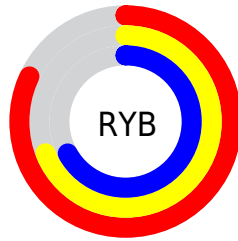
The Hex color **D2AFAC** is a light color, and the websafe version is hex **CC9999**. A complement of this color would be **ACCFD2**, and the grayscale version is **B9B9B9**.

A 20% lighter version of the original color is **FFE7E3**, and **9B7A78** is the 20% darker color. If you saturate the color by 10%, you get **D29C97**, and if you desaturate by 10%, it is **D2C2C1**.

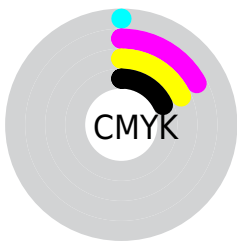
Distribution



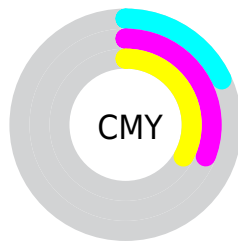
- Red (82%)
- Green (69%)
- Blue (67%)



- Red (82%)
- Yellow (69%)
- Blue (67%)



- Cyan (0%)
- Magenta (17%)
- Yellow (18%)
- Black (18%)



- Cyan (18%)
- Magenta (31%)
- Yellow (33%)

Brightness & Saturation Gradients

These gradients show how the Hex color D2AFAC changes by changing the brightness by 10 percent. The first figure shows a shift by +10% for each color and the second figure -10%.

Similar to the brightness gradients but the following saturation gradients show a change of the Hex color D2AFAC by changing the saturation by 10% instead.

 D2AFAC

 D2AFAC

FFFFFF

 B69491

 FFE7E3

 9B7A78

 81625F

 674A47

 4F3331

 371E1C

 230601

 000000

 D2AFAC

 D2AFAC

 D29C97

 D2C2C1

 D28882

 D2D6D6

 D2756D

 D2E9EB

 D26258

 D2FCFF

 D24E43

 D2FFFF

 D23B2E

 D22819

 D21404

 D21100

Harmonies

Analogous

The Analogous color harmony consists of three colors that are next to each other on the color wheel.



D0AFB9



D2AFAC



CDB2A2

Triad

The Triadic color harmony groups three colors that are evenly spaced from another and form a triangle on the color wheel.



D2AFAC



A6BDA9



A8B8D0

Complementary

The Complementary color scheme is a pair of colors which are on the opposite of each other on the color wheel.



D2AFAC



ACCFD2

Split Complementary

Split-complementary colors differ from the complementary color scheme. The scheme consists of three colors, the original color and two neighbors of the complement color.



9CBCCC



D2AFAC



9BBEB5

Square

The Square scheme is like the rectangle color scheme, but the four colors are evenly spaced on the color wheel.



D2AFAC



B5BAA1



97BEC2



B8B4CD

Rectangle

The Rectangle color scheme consists of four colors that form a rectangle on the color wheel.



D2AFAC



C7B49F



97BEC2



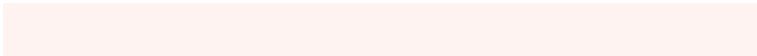
A3BACF

Sweetspot

The Sweet Spot groups the original color and five complimentary colors.



D2AFAC



FFF3F2



D2ACCF



807878



000000



808080

Same Dimension

The Same Dimension uses a secret algorithm to generate beautiful new colors.



D2AFAC



FFCBC7



D2C2AC



695F5E



A80D00



290300

Inverse Universe

The Inverse Universe completely reimagines the original color for something new.



ACCFD2



C7FBFF



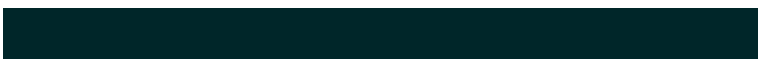
ACBCD2



5E6869



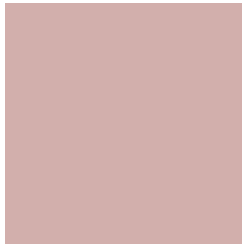
009BA8



002629

Previews

White Background



This preview shows how the Hex color D2AFAC looks on a white background.

Color Contrast Check

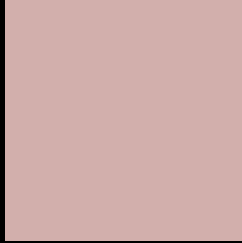
Large Text (above 18pt) WCAG AA × Fail

Any Text WCAG AA × Fail

Large Text (above 18pt) WCAG AAA × Fail

Any Text WCAG AAA × Fail

Black Background



This preview shows how the Hex color D2AFAC looks on a black background.

Color Contrast Check

Large Text (above 18pt) WCAG AA ✓ Pass

Any Text WCAG AA ✓ Pass

Large Text (above 18pt) WCAG AAA ✓ Pass

Any Text WCAG AAA ✓ Pass

If you want to check with other color combinations, try the [Color Contrast Checker](#).

Hex D2AFAC Background



This preview shows how black text looks on a background with the Hex color D2AFAC.



This preview shows how white text looks on a background with the Hex color D2AFAC.

Color Blindness Simulation

Color vision deficiency is a very complex topic, and I could not describe the different causes any better than Wikipedia does, so if you want to learn more, you should check out their [article about color blindness](#).

Dichromacy



Original Color
D2AFAC

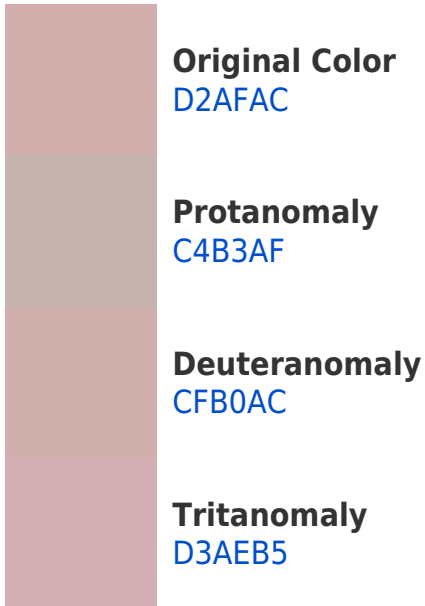
Protanopia
BCB6B0

Deuteranopia
CDB1AC

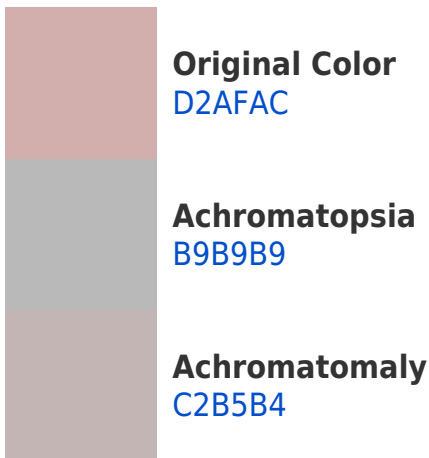


Tritanopia
D4ADBA

Trichromacy



Monochromacy



CSS Examples

Text

The CSS property to change the color of the text to Hex D2AFAC is called "color". The color property can be set on classes, ids or directly on the HTML element.

This example shows how text in the color #D2AFAC looks like.

```
.text, #text, p{  
    color:#D2AFAC  
}
```

If you want to add a text shadow in that color use the text-shadow property, you can generate a text shadow directly with our [CSS Text Shadow Generator](#).

Here you see how black text with a 4 pixel #D2AFAC colored shadow looks like.

```
.shadow{ text-shadow: 4px 4px 2px #D2AFAC }  
}
```

Border

The CSS property to change the border of an element to Hex D2AFAC is called "border". The border property can be set on classes, ids or directly on the HTML element.

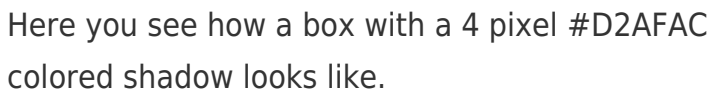
This example shows the color as border, it can be applied via the CSS property "border" or "border-color".

```
.border, #border, table{ border:4px solid #D2AFAC }  
}
```

If only the border color should be changed use the property `border-color`.

```
.border{ border-color:#D2AFAC }
```

If you want to add a box shadow in that color use:



Here you see how a box with a 4 pixel #D2AFAC colored shadow looks like.

```
.boxshadow{ -moz-box-shadow:4px 4px 4px  
4px #D2AFAC; -webkit-box-shadow:4px 4px  
4px 4px #D2AFAC; box-shadow:4px 4px 4px  
4px #D2AFAC }
```

Background

The CSS property to change the background color of an element to Hex D2AFAC is called "background". The background property can be set on classes, ids or directly on the HTML element.

```
.background, #background, body{  
background:#D2AFAC }
```

If only the background color should be changed can be used:

```
.background{ background-color:#D2AFAC }
```

This example shows the color as background, it is applied via the CSS property "background".

To optimize and compress your CSS code, you can use our [online CSS compressor and optimizer](#) based on csstidy. If you want to create a linear or radial gradient as background or border, check our [CSS Gradient Generator](#).

Hey! You found this booklet interesting? Support Converting Colors with the new Membership Option!

The pro membership hides all ads, plus gives you double the colors in the color bucket, and more awesome pro features!

[Learn more, Memberships starting at \\$2.50/m!](#)

**Follow me
on Twitter!**

@ConvertingColor