

Converting Colors

Hex(D2B0B4)

Have a look what the booklet for
Hex(D2B0B4) contains.

Hex(D2B0B4)	3
<i>Conversions</i>	4
<i>Details</i>	6
<i>Harmonies</i>	11
<i>Previews</i>	23
<i>Color Blindness Simulation</i>	26
<i>CSS Examples</i>	29

Color

Hex(D2B0B4)

Conversions

Conversions Part 1

Format	Color
Hex	D2B0B4
RGB	210, 176, 180
RGB Percent	82%, 69%, 71%
CMY	0.1765, 0.3098, 0.2941
CMYK	0.00, 0.16, 0.14, 0.18
HSL	353°, 27%, 76%
HSV	353°, 16%, 82%
XYZ	50.3419, 48.0476, 49.8008
YIQ	186.6220, 18.9800, 8.4520

Conversions

Conversions Part 2

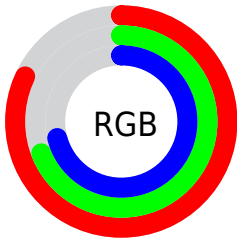
Format	Color
R _Y B	210, 176, 180
Decimal	13807796
CIE Lab	74.85, 12.93, 2.55
CIE LCh	75, 13.178, 11.163
Yxy	48.0476, 0.3397, 0.3242
Android (android.graphics.Color)	4291997876 (0xFFD2B0B4)
YUV	186.6220, -3.2646, 20.5025
Hunter-Lab	69.3164, 8.3342, 5.9242

Details

The Hex color **D2B0B4** is a light color, and the websafe version is hex **CC9999**. A complement of this color would be **B0D2CE**, and the grayscale version is **BBBBBB**.

A 20% lighter version of the original color is **FFE8EC**, and **9B7B7F** is the 20% darker color. If you saturate the color by 10%, you get **D29BA1**, and if you desaturate by 10%, it is **D2C5C7**.

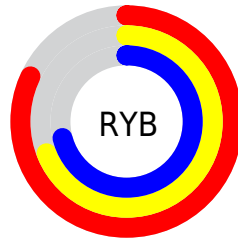
Distribution



Red (82%)

Green (69%)

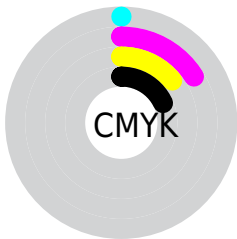
Blue (71%)



Red (82%)

Yellow (69%)

Blue (71%)

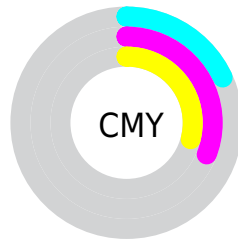


Cyan (0%)

Magenta (16%)

Yellow (14%)

Black (18%)



Cyan (18%)

Magenta (31%)

Yellow (29%)

Brightness & Saturation Gradients

These gradients show how the Hex color D2B0B4 changes by changing the brightness by 10 percent. The first figure shows a shift by +10% for each color and the second figure -10%.

Similar to the brightness gradients but the following saturation gradients show a change of the Hex color D2B0B4 by changing the saturation by 10% instead.

 D2B0B4

 D2B0B4

FFFFFF

 B69599

 FFE8EC

 9B7B7F

 816266

 674A4E

 4F3438

 371E22

 23070C

 000000

 D2B0B4

 D2B0B4

 D29BA1

 D2C5C7

 D2868F

 D2DAD9

 D2717C

 D2EFEC

 D25C6A

 D2FFFE

 D24757

 D2FFFF

 D23245

 D21D32

 D20820

 D20019

Harmonies

Analogous

The Analogous color harmony consists of three colors that are next to each other on the color wheel.



CCB1C0



D2B0B4



D1B2A9

Triad

The Triadic color harmony groups three colors that are evenly spaced from another and form a triangle on the color wheel.



D2B0B4



AFBCA6



A3BCCF

Complementary

The Complementary color scheme is a pair of colors which are on the opposite of each other on the color wheel.



D2B0B4



B0D2CE

Split Complementary

Split-complementary colors differ from the complementary color scheme. The scheme consists of three colors, the original color and two neighbors of the complement color.



9ABEC8



D2B0B4



A3BFB0

Square

The Square scheme is like the rectangle color scheme, but the four colors are evenly spaced on the color wheel.



D2B0B4



BDB9A1



9BBFBC



B1B8D0

Rectangle

The Rectangle color scheme consists of four colors that form a rectangle on the color wheel.



D2B0B4



CDB4A3



9BBFBC



9FBDCD

Sweetspot

The Sweet Spot groups the original color and five complimentary colors.



D2B0B4



FFF2F4



CDB0D2



807879



000000



808080

Same Dimension

The Same Dimension uses a secret algorithm to generate beautiful new colors.



D2B0B4



FFCFD4



D2BCB0



695E5F



A80014



290005

Inverse Universe

The Inverse Universe completely reimagines the original color for something new.



D2B0B4



FFCFD4



B0C6D2



695E5F



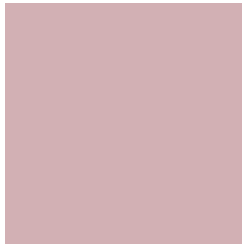
A80014



290005

Previews

White Background



This preview shows how the Hex color D2B0B4 looks on a white background.

Color Contrast Check

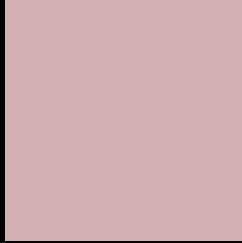
Large Text (above 18pt) WCAG AA × Fail

Any Text WCAG AA × Fail

Large Text (above 18pt) WCAG AAA × Fail

Any Text WCAG AAA × Fail

Black Background



This preview shows how the Hex color D2B0B4 looks on a black background.

Color Contrast Check

Large Text (above 18pt) WCAG AA ✓ Pass

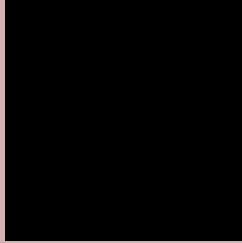
Any Text WCAG AA ✓ Pass

Large Text (above 18pt) WCAG AAA ✓ Pass

Any Text WCAG AAA ✓ Pass

If you want to check with other color combinations, try the [Color Contrast Checker](#).

Hex D2B0B4 Background



This preview shows how black text looks on a background with the Hex color D2B0B4.



This preview shows how white text looks on a background with the Hex color D2B0B4.

Color Blindness Simulation

Color vision deficiency is a very complex topic, and I could not describe the different causes any better than Wikipedia does, so if you want to learn more, you should check out their [article about color blindness](#).

Dichromacy





Tritanopia
D3AFBC

Trichromacy



Original Color

D2B0B4

Protanomaly

C4B5B7

Deuteranomaly

CEB1B4

Tritanomaly

D3AFB9

Monochromacy



Original Color

D2B0B4

Achromatopsia

BBBBBB

Achromatomaly

C3B7B8

CSS Examples

Text

The CSS property to change the color of the text to Hex D2B0B4 is called "color". The color property can be set on classes, ids or directly on the HTML element.

This example shows how text in the color #D2B0B4 looks like.

```
.text, #text, p{  
  color:#D2B0B4  
}
```

If you want to add a text shadow in that color use the text-shadow property, you can generate a text shadow directly with our [CSS Text Shadow Generator](#).

Here you see how black text with a 4 pixel #D2B0B4 colored shadow looks like.

```
.shadow{ text-shadow: 4px 4px 2px #D2B0B4
}
```

Border

The CSS property to change the border of an element to Hex D2B0B4 is called "border". The border property can be set on classes, ids or directly on the HTML element.

This example shows the color as border, it can be applied via the CSS property "border" or "border-color".

```
.border, #border, table{ border:4px solid
#D2B0B4 }
```

If only the border color should be changed use the property `border-color`.

```
.border{ border-color:#D2B0B4 }
```

If you want to add a box shadow in that color use:

Here you see how a box with a 4 pixel #D2B0B4 colored shadow looks like.

```
.boxshadow{ -moz-box-shadow:4px 4px 4px  
4px #D2B0B4; -webkit-box-shadow:4px 4px  
4px 4px #D2B0B4; box-shadow:4px 4px 4px  
4px #D2B0B4 }
```

Background

The CSS property to change the background color of an element to Hex D2B0B4 is called "background". The background property can be set on classes, ids or directly on the HTML element.

```
.background, #background, body{  
background:#D2B0B4 }
```

If only the background color should be changed can be used:

```
.background{ background-color:#D2B0B4 }
```

This example shows the color as background, it is applied via the CSS property "background".

To optimize and compress your CSS code, you can use our [online CSS compressor and optimizer](#) based on csstidy. If you want to create a linear or radial gradient as background or border, check our [CSS Gradient Generator](#).

Hey! You found this booklet interesting? Support Converting Colors with the new Membership Option!

The pro membership hides all ads, plus gives you double the colors in the color bucket, and more awesome pro features!

[Learn more, Memberships starting at \\$2.50/m!](#)

**Follow me
on Twitter!**

@ConvertingColor