

Converting Colors

Hex(D2B0BC)

Have a look what the booklet for
Hex(D2B0BC) contains.

Hex(D2B0BC)	3
<i>Conversions</i>	4
<i>Details</i>	6
<i>Harmonies</i>	11
<i>Previews</i>	23
<i>Color Blindness Simulation</i>	26
<i>CSS Examples</i>	29

Color

Hex(D2B0BC)

Conversions

Conversions Part 1

Format	Color
Hex	D2B0BC
RGB	210, 176, 188
RGB Percent	82%, 69%, 74%
CMY	0.1765, 0.3098, 0.2627
CMYK	0.00, 0.16, 0.10, 0.18
HSL	339°, 27%, 76%
HSV	339°, 16%, 82%
XYZ	51.1808, 48.3831, 54.2183
YIQ	187.5340, 16.4120, 10.9400

Conversions

Conversions Part 2

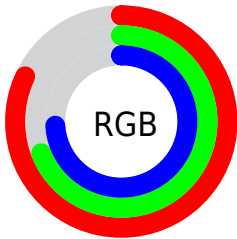
Format	Color
R_{YB}	210, 176, 188
Decimal	13807804
CIE _{Lab}	75.07, 14.25, -1.51
CIE _{LCh}	75, 14.334, 353.943
Yxy	48.3831, 0.3328, 0.3146
Android (android.graphics.Color)	4291997884 (0xFFD2B0BC)
YUV	187.5340, 0.2297, 19.7027
Hunter-Lab	69.5580, 9.6138, 2.4759

Details

The Hex color **D2B0BC** is a light color, and the websafe version is hex **CC9999**. A complement of this color would be **B0D2C6**, and the grayscale version is **BCBCBC**.

A 20% lighter version of the original color is **FFE8F4**, and **9B7B87** is the 20% darker color. If you saturate the color by 10%, you get **D29BAE**, and if you desaturate by 10%, it is **D2C5CA**.

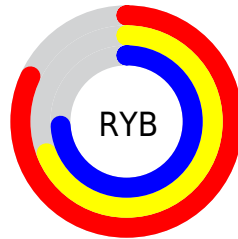
Distribution



Red (82%)

Green (69%)

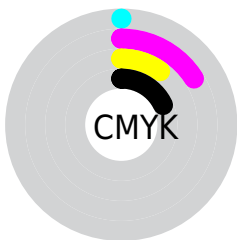
Blue (74%)



Red (82%)

Yellow (69%)

Blue (74%)

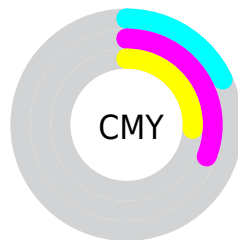


Cyan (0%)

Magenta (16%)

Yellow (10%)

Black (18%)



Cyan (18%)

Magenta (31%)

Yellow (26%)

Brightness & Saturation Gradients

These gradients show how the Hex color D2B0BC changes by changing the brightness by 10 percent. The first figure shows a shift by +10% for each color and the second figure -10%.

Similar to the brightness gradients but the following saturation gradients show a change of the Hex color D2B0BC by changing the saturation by 10% instead.

 D2B0BC

FFFFFF

 FFE8F4

 D2B0BC

 B695A1

 9B7B87

 81626E

 684A55

 4F343E

 381E28

 220714

 000000

 D2B0BC

 D2B0BC

 D29BAE

 D2C5CA

 D286A1

 D2DAD7

 D27193

 D2EFE5

 D25C86

 D2FFF2

 D24778

 D2FFFF

 D2326A

 D21D5D

 D2084F

 D2004A

Harmonies

Analogous

The Analogous color harmony consists of three colors that are next to each other on the color wheel.



C8B2C8



D2B0BC



D5B0AF

Triad

The Triadic color harmony groups three colors that are evenly spaced from another and form a triangle on the color wheel.



D2B0BC



B8BBA1



9BBECE

Complementary

The Complementary color scheme is a pair of colors which are on the opposite of each other on the color wheel.



D2B0BC



B0D2C6

Split Complementary

Split-complementary colors differ from the complementary color scheme. The scheme consists of three colors, the original color and two neighbors of the complement color.



97C0C3



D2B0BC



A9BFA9

Square

The Square scheme is like the rectangle color scheme, but the four colors are evenly spaced on the color wheel.



D2B0BC



C6B79F



9DC0B6



A7BBD3

Rectangle

The Rectangle color scheme consists of four colors that form a rectangle on the color wheel.



D2B0BC



D3B2A7



9DC0B6



98BFCB

Sweetspot

The Sweet Spot groups the original color and five complimentary colors.



D2B0BC



FFF2F7



C6B0D2



80787B



000000



808080

Same Dimension

The Same Dimension uses a secret algorithm to generate beautiful new colors.



D2B0BC



FFCFE0



D2B5B0



695E62



A8003B



29000E

Inverse Universe

The Inverse Universe completely reimagines the original color for something new.



D2B0BC



FFCFE0



B0CDD2



695E62



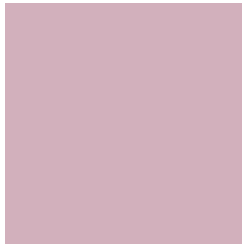
A8003B



29000E

Previews

White Background



This preview shows how the Hex color D2B0BC looks on a white background.

Color Contrast Check

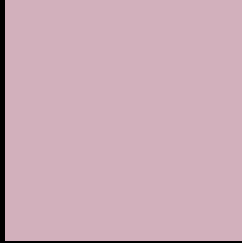
Large Text (above 18pt) WCAG AA × Fail

Any Text WCAG AA × Fail

Large Text (above 18pt) WCAG AAA × Fail

Any Text WCAG AAA × Fail

Black Background



This preview shows how the Hex color D2B0BC looks on a black background.

Color Contrast Check

Large Text (above 18pt) WCAG AA ✓ Pass

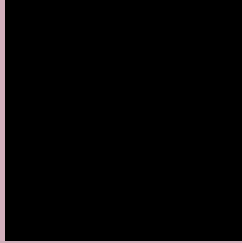
Any Text WCAG AA ✓ Pass

Large Text (above 18pt) WCAG AAA ✓ Pass

Any Text WCAG AAA ✓ Pass

If you want to check with other color combinations, try the [Color Contrast Checker](#).

Hex D2B0BC Background



This preview shows how black text looks on a background with the Hex color D2B0BC.



This preview shows how white text looks on a background with the Hex color D2B0BC.

Color Blindness Simulation

Color vision deficiency is a very complex topic, and I could not describe the different causes any better than Wikipedia does, so if you want to learn more, you should check out their [article about color blindness](#).


Dichromacy



Original Color
D2B0BC

Protanopia
BAB8C1

Deuteranopia
CAB3BB



Tritanopia
D2B0BD

Trichromacy



Original Color
D2B0BC

Protanomaly
C3B5BF

Deuteranomaly
CDB2BB

Tritanomaly
D2B0BD

Monochromacy



Original Color
D2B0BC

Achromatopsia
BCBCBC

Achromatomaly
C4B8BC

CSS Examples

Text

The CSS property to change the color of the text to Hex D2B0BC is called "color". The color property can be set on classes, ids or directly on the HTML element.

This example shows how text in the color #D2B0BC looks like.

```
.text, #text, p{  
    color:#D2B0BC  
}
```

If you want to add a text shadow in that color use the text-shadow property, you can generate a text shadow directly with our [CSS Text Shadow Generator](#).

Here you see how black text with a 4 pixel #D2B0BC colored shadow looks like.

```
.shadow{ text-shadow: 4px 4px 2px #D2B0BC }  
}
```

Border

The CSS property to change the border of an element to Hex D2B0BC is called "border". The border property can be set on classes, ids or directly on the HTML element.

This example shows the color as border, it can be applied via the CSS property "border" or "border-color".

```
.border, #border, table{ border:4px solid #D2B0BC }  
}
```

If only the border color should be changed use the property `border-color`.

```
.border{ border-color:#D2B0BC }
```

If you want to add a box shadow in that color use:

Here you see how a box with a 4 pixel #D2B0BC colored shadow looks like.

```
.boxshadow{ -moz-box-shadow:4px 4px 4px  
4px #D2B0BC; -webkit-box-shadow:4px 4px  
4px 4px #D2B0BC; box-shadow:4px 4px 4px  
4px #D2B0BC }
```

Background

The CSS property to change the background color of an element to Hex D2B0BC is called "background". The background property can be set on classes, ids or directly on the HTML element.

```
.background, #background, body{  
background:#D2B0BC }
```

If only the background color should be changed can be used:

```
.background{ background-color:#D2B0BC }
```

This example shows the color as background, it is applied via the CSS property "background".

To optimize and compress your CSS code, you can use our [online CSS compressor and optimizer](#) based on csstidy. If you want to create a linear or radial gradient as background or border, check our [CSS Gradient Generator](#).

Hey! You found this booklet interesting? Support Converting Colors with the new Membership Option!

The pro membership hides all ads, plus gives you double the colors in the color bucket, and more awesome pro features!

[Learn more, Memberships starting at \\$2.50/m!](#)

**Follow me
on Twitter!**

@ConvertingColor