

# Converting Colors

Hex(D2B18E)

Have a look what the booklet for  
Hex(D2B18E) contains.

<b>Hex(D2B18E)</b> .....	3
<i><b>Conversions</b></i> .....	4
<i><b>Details</b></i> .....	6
<i><b>Harmonies</b></i> .....	11
<i><b>Previews</b></i> .....	23
<i><b>Color Blindness Simulation</b></i> .....	26
<i><b>CSS Examples</b></i> .....	29

# **Color**

**Hex(D2B18E)**

# Conversions

## Conversions Part 1

Format	Color
Hex	D2B18E
RGB	210, 177, 142
RGB Percent	82%, 69%, 56%
CMY	0.1765, 0.3059, 0.4431
CMYK	0.00, 0.16, 0.32, 0.18
HSL	31°, 43%, 69%
HSV	31°, 32%, 82%
XYZ	47.1830, 47.0989, 32.1954
YIQ	182.8770, 30.9030, -3.8890

# Conversions

## Conversions Part 2

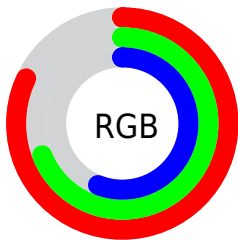
<b>Format</b>	<b>Color</b>
R <sub>Y</sub> B	206, 210, 142
Decimal	13808014
CIE Lab	74.25, 6.88, 22.37
CIE LCh	74, 23.400, 72.905
Yxy	47.0989, 0.3731, 0.3724
Android (android.graphics.Color)	4291998094 (0xFFD2B18E)
YUV	182.8770, -20.1524, 23.7869
Hunter-Lab	68.6286, 2.6206, 20.2257

# Details

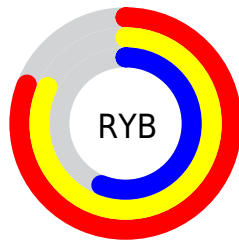
The Hex color **D2B18E** is a light color, and the websafe version is hex **CC9966**. A complement of this color would be **8EAFD2**, and the grayscale version is **B7B7B7**.

A 20% lighter version of the original color is **FFE9C4**, and **9A7C5C** is the 20% darker color. If you saturate the color by 10%, you get **D2A779**, and if you desaturate by 10%, it is **D2BBA3**.

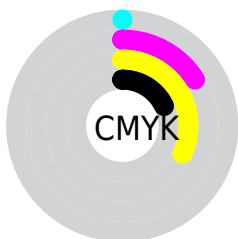
# Distribution



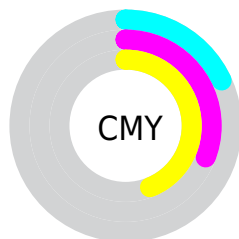
- Red (82%)
- Green (69%)
- Blue (56%)



- Red (81%)
- Yellow (82%)
- Blue (56%)



- Cyan (0%)
- Magenta (16%)
- Yellow (32%)
- Black (18%)



- Cyan (18%)
- Magenta (31%)
- Yellow (44%)

# Brightness & Saturation Gradients

These gradients show how the Hex color D2B18E changes by changing the brightness by 10 percent. The first figure shows a shift by +10% for each color and the second figure -10%.

Similar to the brightness gradients but the following saturation gradients show a change of the Hex color D2B18E by changing the saturation by 10% instead.



 D2B18E

 D2B18E

FFFFFF

 B69674

 FFE9C4

 9A7C5C

 FFFFFE0

 806444

FFFFFFD

 664C2D

 4D3518

 352000

 1E0900

 000000

 D2B18E

 D2B18E

 D2A779

 D2BBA3

 D29D64

 D2C5B8

 D2924F

 D2D0CD

 D2883A

 D2DAE2

 D27E25

 D2E4F7

 D27410

 D2EEFF

 D26C00

 D2F8FF

 D2FFFF

# Harmonies

## Analogous

The Analogous color harmony consists of three colors that are next to each other on the color wheel.



E0AB9A



D2B18E



BDB88D

# Triad

The Triadic color harmony groups three colors that are evenly spaced from another and form a triangle on the color wheel.



D2B18E



7DC3BF



C6AED6

# Complementary

The Complementary color scheme is a pair of colors which are on the opposite of each other on the color wheel.



D2B18E



8EAFD2

# Split Complementary

Split-complementary colors differ from the complementary color scheme. The scheme consists of three colors, the original color and two neighbors of the complement color.



AAB5E0



D2B18E



7CC1D3

# Square

The Square scheme is like the rectangle color scheme, but the four colors are evenly spaced on the color wheel.



D2B18E



8DC2A9



8EBCDF



DAA9C4

# Rectangle

The Rectangle color scheme consists of four colors that form a rectangle on the color wheel.



D2B18E



ADBC92



8EBCDF



BDB0DB



# Sweetspot

The Sweet Spot groups the original color and five complimentary colors.



D2B18E



FFF3E6



D28EB0



807870



000000



808080



# Same Dimension

The Same Dimension uses a secret algorithm to generate beautiful new colors.



D2B18E



FFCF9C



D2D28E



69635E



A85700



291500

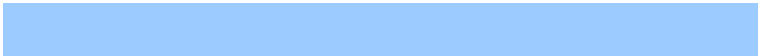


# Inverse Universe

The Inverse Universe completely reimagines the original color for something new.



8EAFD2



9CCCFE



8E8ED2



5E6369



0052A8

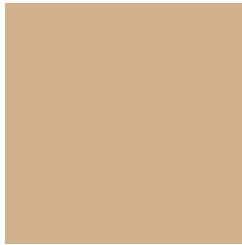


001429



# Previews

## White Background



This preview shows how the Hex color D2B18E looks on a white background.

## Color Contrast Check

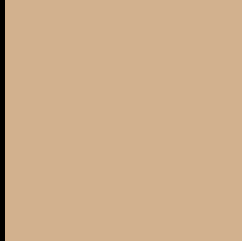
Large Text (above 18pt) WCAG AA × Fail

Any Text WCAG AA × Fail

Large Text (above 18pt) WCAG AAA × Fail

Any Text WCAG AAA × Fail

# Black Background



This preview shows how the Hex color D2B18E looks on a black background.

## Color Contrast Check

Large Text (above 18pt) WCAG AA ✓ Pass

Any Text WCAG AA ✓ Pass

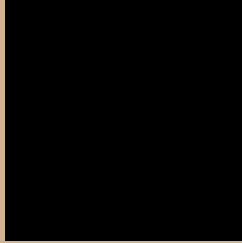
Large Text (above 18pt) WCAG AAA ✓ Pass

Any Text WCAG AAA ✓ Pass

If you want to check with other color combinations, try the [Color Contrast Checker](#).



## Hex D2B18E Background



This preview shows how black text looks on a background with the Hex color D2B18E.



This preview shows how white text looks on a background with the Hex color D2B18E.

# Color Blindness Simulation

Color vision deficiency is a very complex topic, and I could not describe the different causes any better than Wikipedia does, so if you want to learn more, you should check out their [article about color blindness](#).

## Dichromacy



**Original Color**  
D2B18E

**Protanopia**  
C2B691

**Deuteranopia**  
D6AF8E

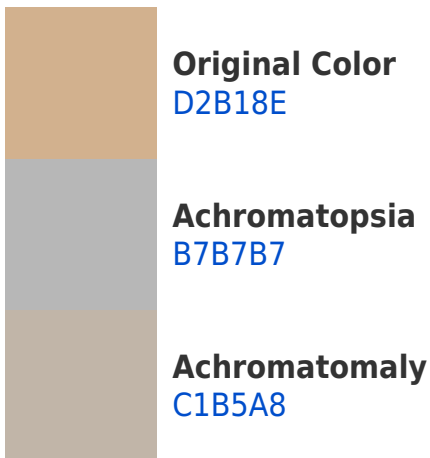


**Tritanopia**  
D7ABB8

# Trichromacy



# Monochromacy



# CSS Examples

## Text

The CSS property to change the color of the text to Hex D2B18E is called "color". The color property can be set on classes, ids or directly on the HTML element.

This example shows how text in the color #D2B18E looks like.

```
.text, #text, p{  
    color:#D2B18E  
}
```

If you want to add a text shadow in that color use the text-shadow property, you can generate a text shadow directly with our [CSS Text Shadow Generator](#).

Here you see how black text with a 4 pixel #D2B18E colored shadow looks like.

```
.shadow{ text-shadow: 4px 4px 2px #D2B18E
}
```

## Border

The CSS property to change the border of an element to Hex D2B18E is called "border". The border property can be set on classes, ids or directly on the HTML element.

This example shows the color as border, it can be applied via the CSS property "border" or "border-color".

```
.border, #border, table{ border:4px solid
#D2B18E }
```

If only the border color should be changed use the property `border-color`.

```
.border{ border-color:#D2B18E }
```

If you want to add a box shadow in that color use:

Here you see how a box with a 4 pixel #D2B18E colored shadow looks like.

```
.boxshadow{ -moz-box-shadow:4px 4px 4px  
4px #D2B18E; -webkit-box-shadow:4px 4px  
4px 4px #D2B18E; box-shadow:4px 4px 4px  
4px #D2B18E }
```

# Background

The CSS property to change the background color of an element to Hex D2B18E is called "background". The background property can be set on classes, ids or directly on the HTML element.

```
.background, #background, body{  
background:#D2B18E }
```

If only the background color should be changed can be used:

```
.background{ background-color:#D2B18E }
```

This example shows the color as background, it is applied via the CSS property "background".

To optimize and compress your CSS code, you can use our [online CSS compressor and optimizer](#) based on csstidy. If you want to create a linear or radial gradient as background or border, check our [CSS Gradient Generator](#).



Hey! You found this booklet interesting? Support Converting Colors with the new Membership Option!

The pro membership hides all ads, plus gives you double the colors in the color bucket, and more awesome pro features!

**[Learn more, Memberships starting at \\$2.50/m!](#)**

**Follow me  
on Twitter!**

@ConvertingColor