

Converting Colors

Hex(D2B298)

Have a look what the booklet for
Hex(D2B298) contains.

| | |
|--|----|
| Hex(D2B298) | 3 |
| <i>Conversions</i> | 4 |
| <i>Details</i> | 6 |
| <i>Harmonies</i> | 11 |
| <i>Previews</i> | 23 |
| <i>Color Blindness Simulation</i> | 26 |
| <i>CSS Examples</i> | 29 |

Color

Hex(D2B298)

Conversions

Conversions Part 1

| Format | Color |
|-------------|----------------------------|
| Hex | D2B298 |
| RGB | 210, 178, 152 |
| RGB Percent | 82%, 70%, 60% |
| CMY | 0.1765, 0.3020, 0.4039 |
| CMYK | 0.00, 0.15, 0.28, 0.18 |
| HSL | 27°, 39%, 71% |
| HSV | 27°, 28%, 82% |
| XYZ | 48.1662, 47.8094, 36.3953 |
| YIQ | 184.6040, 27.4180, -1.3020 |

Conversions

Conversions Part 2

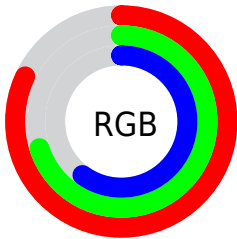
| Format | Color |
|-------------------------------------|--------------------------------|
| R _Y B | 210, 199, 152 |
| Decimal | 13808280 |
| CIE Lab | 74.70, 7.66, 17.59 |
| CIE LCh | 75, 19.184, 66.455 |
| Yxy | 47.8094, 0.3639, 0.3612 |
| Android (android.graphics.Color) | 4291998360 (0xFFD2B298) |
| YUV | 184.6040, -16.0738, 22.2723 |
| Hunter-Lab | 69.1444, 3.3412, 17.1928 |

Details

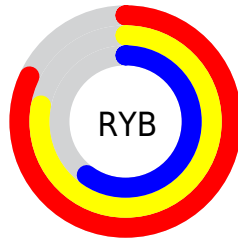
The Hex color **D2B298** is a light color, and the websafe version is hex **CC9999**. A complement of this color would be **98B8D2**, and the grayscale version is **B9B9B9**.

A 20% lighter version of the original color is **FFEACE**, and **9B7D65** is the 20% darker color. If you saturate the color by 10%, you get **D2A683**, and if you desaturate by 10%, it is **D2BEAD**.

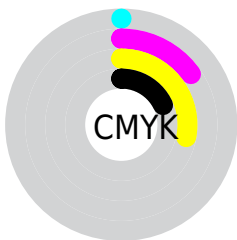
Distribution



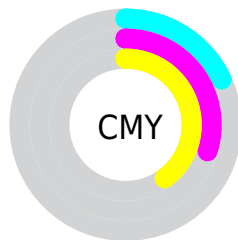
- Red (82%)
- Green (70%)
- Blue (60%)



- Red (82%)
- Yellow (78%)
- Blue (60%)



- Cyan (0%)
- Magenta (15%)
- Yellow (28%)
- Black (18%)



- Cyan (18%)
- Magenta (30%)
- Yellow (40%)

Brightness & Saturation Gradients

These gradients show how the Hex color D2B298 changes by changing the brightness by 10 percent. The first figure shows a shift by +10% for each color and the second figure -10%.

Similar to the brightness gradients but the following saturation gradients show a change of the Hex color D2B298 by changing the saturation by 10% instead.

 D2B298

FFFFFF

 FFEACE

 FFFFEB

 D2B298

 B6977E

 9B7D65

 80644D

 664D36

 4D3620

 36200A

 200A00

 000000

 D2B298

 D2B298

 D2A683

 D2BEAD

 D29B6E

 D2C9C2

 D28F59

 D2D5D7

 D28444

 D2E0EC

 D2782F

 D2ECFF

 D26C1A

 D2F8FF

 D26105

 D2FFFF

 D25E00

Harmonies

Analogous

The Analogous color harmony consists of three colors that are next to each other on the color wheel.



DCADA4



D2B298



C2B895

Triad

The Triadic color harmony groups three colors that are evenly spaced from another and form a triangle on the color wheel.



D2B298



8CC2BB



C0B2D4

Complementary

The Complementary color scheme is a pair of colors which are on the opposite of each other on the color wheel.



D2B298



98B8D2

Split Complementary

Split-complementary colors differ from the complementary color scheme. The scheme consists of three colors, the original color and two neighbors of the complement color.



A9B8DB



D2B298



89C1CC

Square

The Square scheme is like the rectangle color scheme, but the four colors are evenly spaced on the color wheel.



D2B298



9AC1A9



94BDD8



D2ADC6

Rectangle

The Rectangle color scheme consists of four colors that form a rectangle on the color wheel.



D2B298



B5BC98



94BDD8



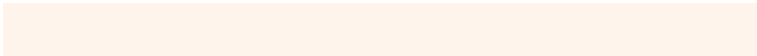
B8B4D7

Sweetspot

The Sweet Spot groups the original color and five complimentary colors.



D2B298



FFF4EB



D298B9



807873



000000



808080

Same Dimension

The Same Dimension uses a secret algorithm to generate beautiful new colors.



D2B298



FFD1AB



D2CE98



69635E



A84B00



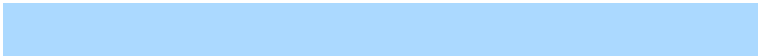
291200

Inverse Universe

The Inverse Universe completely reimagines the original color for something new.



98B8D2



ABD9FF



989CD2



5E6469



005DA8



001729

Previews

White Background



This preview shows how the Hex color D2B298 looks on a white background.

Color Contrast Check

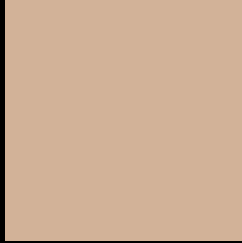
Large Text (above 18pt) WCAG AA × Fail

Any Text WCAG AA × Fail

Large Text (above 18pt) WCAG AAA × Fail

Any Text WCAG AAA × Fail

Black Background



This preview shows how the Hex color D2B298 looks on a black background.

Color Contrast Check

Large Text (above 18pt) WCAG AA ✓ Pass

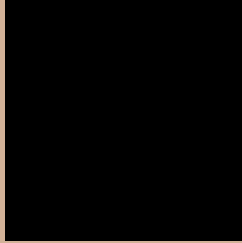
Any Text WCAG AA ✓ Pass

Large Text (above 18pt) WCAG AAA ✓ Pass

Any Text WCAG AAA ✓ Pass

If you want to check with other color combinations, try the [Color Contrast Checker](#).

Hex D2B298 Background



This preview shows how black text looks on a background with the Hex color D2B298.



This preview shows how white text looks on a background with the Hex color D2B298.

Color Blindness Simulation

Color vision deficiency is a very complex topic, and I could not describe the different causes any better than Wikipedia does, so if you want to learn more, you should check out their [article about color blindness](#).

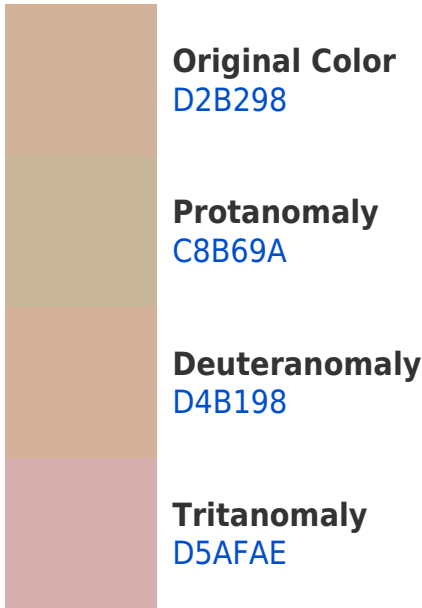
Dichromacy



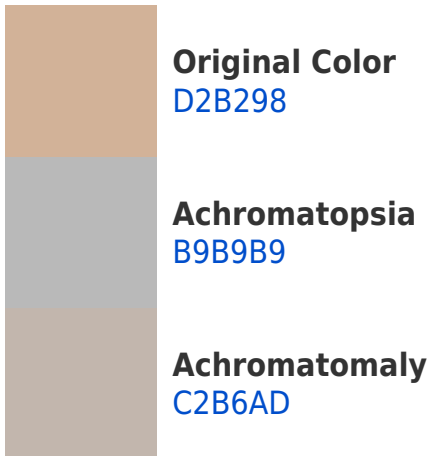


Tritanopia
D6ADBB

Trichromacy



Monochromacy



CSS Examples

Text

The CSS property to change the color of the text to Hex D2B298 is called "color". The color property can be set on classes, ids or directly on the HTML element.

This example shows how text in the color #D2B298 looks like.

```
.text, #text, p{  
    color:#D2B298  
}
```

If you want to add a text shadow in that color use the text-shadow property, you can generate a text shadow directly with our [CSS Text Shadow Generator](#).

Here you see how black text with a 4 pixel #D2B298 colored shadow looks like.

```
.shadow{ text-shadow: 4px 4px 2px #D2B298
}
```

Border

The CSS property to change the border of an element to Hex D2B298 is called "border". The border property can be set on classes, ids or directly on the HTML element.

This example shows the color as border, it can be applied via the CSS property "border" or "border-color".

```
.border, #border, table{ border:4px solid
#D2B298 }
```

If only the border color should be changed use the property `border-color`.

```
.border{ border-color:#D2B298 }
```

If you want to add a box shadow in that color use:

Here you see how a box with a 4 pixel #D2B298 colored shadow looks like.

```
.boxshadow{ -moz-box-shadow:4px 4px 4px  
4px #D2B298; -webkit-box-shadow:4px 4px  
4px 4px #D2B298; box-shadow:4px 4px 4px  
4px #D2B298 }
```

Background

The CSS property to change the background color of an element to Hex D2B298 is called "background". The background property can be set on classes, ids or directly on the HTML element.

```
.background, #background, body{  
background:#D2B298 }
```

If only the background color should be changed can be used:

```
.background{ background-color:#D2B298 }
```

This example shows the color as background, it is applied via the CSS property "background".

To optimize and compress your CSS code, you can use our [online CSS compressor and optimizer](#) based on csstidy. If you want to create a linear or radial gradient as background or border, check our [CSS Gradient Generator](#).

Hey! You found this booklet interesting? Support Converting Colors with the new Membership Option!

The pro membership hides all ads, plus gives you double the colors in the color bucket, and more awesome pro features!

[Learn more, Memberships starting at \\$2.50/m!](#)

**Follow me
on Twitter!**

@ConvertingColor