

Converting Colors

Hex(D2B39B)

Have a look what the booklet for
Hex(D2B39B) contains.

Hex(D2B39B)	3
<i>Conversions</i>	4
<i>Details</i>	6
<i>Harmonies</i>	11
<i>Previews</i>	23
<i>Color Blindness Simulation</i>	26
<i>CSS Examples</i>	29

Color

Hex(D2B39B)

Conversions

Conversions Part 1

Format	Color
Hex	D2B39B
RGB	210, 179, 155
RGB Percent	82%, 70%, 61%
CMY	0.1765, 0.2980, 0.3922
CMYK	0.00, 0.15, 0.26, 0.18
HSL	26°, 38%, 72%
HSV	26°, 26%, 82%
XYZ	48.6148, 48.3084, 37.7725
YIQ	185.5330, 26.1800, -0.8920

Conversions

Conversions Part 2

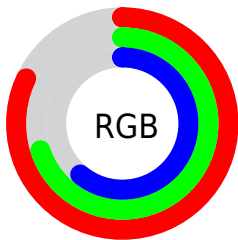
Format	Color
RYB	210, 198, 155
Decimal	13808539
CIELab	75.02, 7.54, 16.40
CIELCh	75, 18.050, 65.304
Yxy	48.3084, 0.3609, 0.3586
Android (android.graphics.Color)	4291998619 (0xFFD2B39B)
YUV	185.5330, -15.0528, 21.4576
Hunter-Lab	69.5042, 3.2196, 16.4314

Details

The Hex color **D2B39B** is a light color, and the websafe version is hex **CC9999**. A complement of this color would be **9BBAD2**, and the grayscale version is **BABABA**.

A 20% lighter version of the original color is **FFEBD1**, and **9B7E68** is the 20% darker color. If you saturate the color by 10%, you get **D2A786**, and if you desaturate by 10%, it is **D2BFB0**.

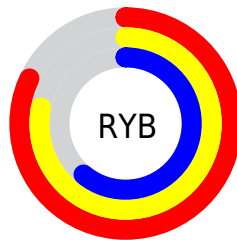
Distribution



Red (82%)

Green (70%)

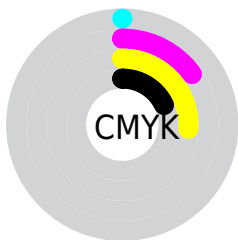
Blue (61%)



Red (82%)

Yellow (78%)

Blue (61%)

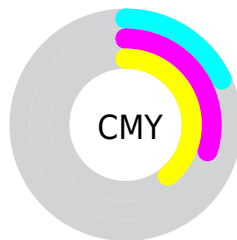


Cyan (0%)

Magenta (15%)

Yellow (26%)

Black (18%)



Cyan (18%)

Magenta (30%)

Yellow (39%)

Brightness & Saturation Gradients

These gradients show how the Hex color D2B39B changes by changing the brightness by 10 percent. The first figure shows a shift by +10% for each color and the second figure -10%.

Similar to the brightness gradients but the following saturation gradients show a change of the Hex color D2B39B by changing the saturation by 10% instead.

 D2B39B

 D2B39B

FFFFFF

 B69881

 FFEBD1

 9B7E68

 FFFFEE

 806550

 674D39

 4E3723

 36210E

 200C00

 000000

 D2B39B

 D2B39B

 D2A786

 D2BFB0

 D29B71

 D2CBC5

 D28F5C

 D2D7DA

 D28447

 D2E2EF

 D27832

 D2EEFF

 D26C1D

 D2FAFF

 D26008

 D2FFFF

 D25C00

Harmonies

Analogous

The Analogous color harmony consists of three colors that are next to each other on the color wheel.



DBAFA6



D2B39B



C3B898

Triad

The Triadic color harmony groups three colors that are evenly spaced from another and form a triangle on the color wheel.



D2B39B



90C2BB



BFB3D4

Complementary

The Complementary color scheme is a pair of colors which are on the opposite of each other on the color wheel.



D2B39B



9BBAD2

Split Complementary

Split-complementary colors differ from the complementary color scheme. The scheme consists of three colors, the original color and two neighbors of the complement color.



AAB9D9



D2B39B



8DC1CB

Square

The Square scheme is like the rectangle color scheme, but the four colors are evenly spaced on the color wheel.



D2B39B



9EC1AA



97BED6



D1AFC7

Rectangle

The Rectangle color scheme consists of four colors that form a rectangle on the color wheel.



D2B39B



B6BC9B



97BED6



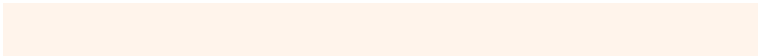
B8B5D7

Sweetspot

The Sweet Spot groups the original color and five complimentary colors.



D2B39B



FFF4EB



D29BBA



807873



000000



808080

Same Dimension

The Same Dimension uses a secret algorithm to generate beautiful new colors.



D2B39B



FFD2B0



D2CE9B



69635E



A84900



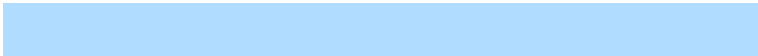
291200

Inverse Universe

The Inverse Universe completely reimagines the original color for something new.



9BBAD2



B0DDFF



9B9FD2



5E6469



005FA8



001729

Previews

White Background



This preview shows how the Hex color D2B39B looks on a white background.

Color Contrast Check

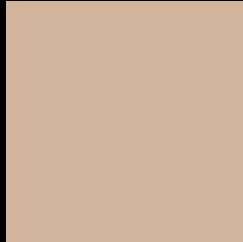
Large Text (above 18pt) WCAG AA × Fail

Any Text WCAG AA × Fail

Large Text (above 18pt) WCAG AAA × Fail

Any Text WCAG AAA × Fail

Black Background



This preview shows how the Hex color D2B39B looks on a black background.

Color Contrast Check

Large Text (above 18pt) WCAG AA ✓ Pass

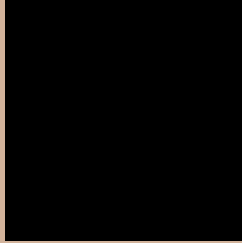
Any Text WCAG AA ✓ Pass

Large Text (above 18pt) WCAG AAA ✓ Pass

Any Text WCAG AAA ✓ Pass

If you want to check with other color combinations, try the [Color Contrast Checker](#).

Hex D2B39B Background



This preview shows how black text looks on a background with the Hex color D2B39B.



This preview shows how white text looks on a background with the Hex color D2B39B.

Color Blindness Simulation

Color vision deficiency is a very complex topic, and I could not describe the different causes any better than Wikipedia does, so if you want to learn more, you should check out their [article about color blindness](#).

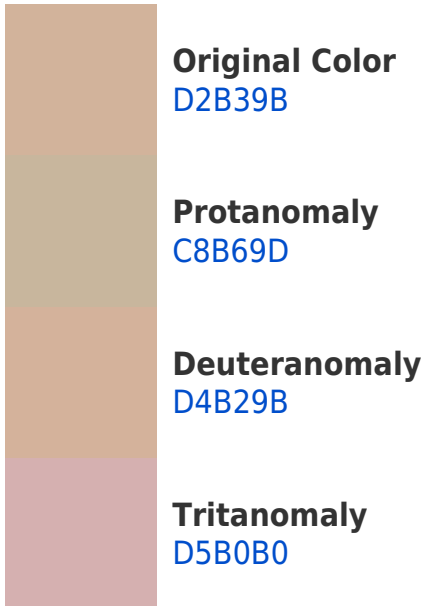
Dichromacy



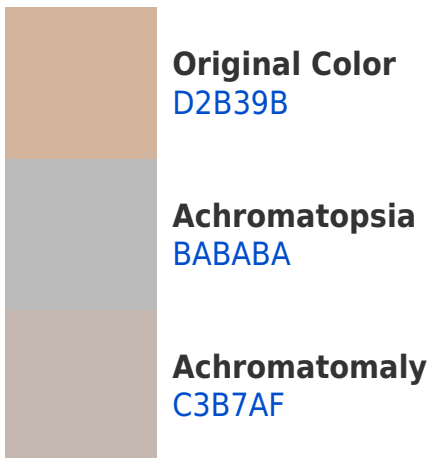


Tritanopia
D6AEBC

Trichromacy



Monochromacy



CSS Examples

Text

The CSS property to change the color of the text to Hex D2B39B is called "color". The color property can be set on classes, ids or directly on the HTML element.

This example shows how text in the color #D2B39B looks like.

```
.text, #text, p{  
    color:#D2B39B  
}
```

If you want to add a text shadow in that color use the text-shadow property, you can generate a text shadow directly with our [CSS Text Shadow Generator](#).

Here you see how black text with a 4 pixel #D2B39B colored shadow looks like.

```
.shadow{ text-shadow: 4px 4px 2px #D2B39B
}
```

Border

The CSS property to change the border of an element to Hex D2B39B is called "border". The border property can be set on classes, ids or directly on the HTML element.

This example shows the color as border, it can be applied via the CSS property "border" or "border-color".

```
.border, #border, table{ border:4px solid
#D2B39B }
```

If only the border color should be changed use the property `border-color`.

```
.border{ border-color:#D2B39B }
```

If you want to add a box shadow in that color use:

Here you see how a box with a 4 pixel #D2B39B colored shadow looks like.

```
.boxshadow{ -moz-box-shadow:4px 4px 4px  
4px #D2B39B; -webkit-box-shadow:4px 4px  
4px 4px #D2B39B; box-shadow:4px 4px 4px  
4px #D2B39B }
```

Background

The CSS property to change the background color of an element to Hex D2B39B is called "background". The background property can be set on classes, ids or directly on the HTML element.

```
.background, #background, body{  
background:#D2B39B }
```

If only the background color should be changed can be used:

```
.background{ background-color:#D2B39B }
```

This example shows the color as background, it is applied via the CSS property "background".

To optimize and compress your CSS code, you can use our [online CSS compressor and optimizer](#) based on csstidy. If you want to create a linear or radial gradient as background or border, check our [CSS Gradient Generator](#).

Hey! You found this booklet interesting? Support Converting Colors with the new Membership Option!

The pro membership hides all ads, plus gives you double the colors in the color bucket, and more awesome pro features!

[Learn more, Memberships starting at \\$2.50/m!](#)

**Follow me
on Twitter!**

@ConvertingColor