

Converting Colors

Hex(D2B599)

Have a look what the booklet for
Hex(D2B599) contains.

Hex(D2B599)	3
<i>Conversions</i>	4
<i>Details</i>	6
<i>Harmonies</i>	11
<i>Previews</i>	23
<i>Color Blindness Simulation</i>	26
<i>CSS Examples</i>	29

Color

Hex(D2B599)

Conversions

Conversions Part 1

Format	Color
Hex	D2B599
RGB	210, 181, 153
RGB Percent	82%, 71%, 60%
CMY	0.1765, 0.2902, 0.4000
CMYK	0.00, 0.14, 0.27, 0.18
HSL	29°, 39%, 71%
HSV	29°, 27%, 82%
XYZ	48.8520, 49.0493, 37.0297
YIQ	186.4790, 26.2720, -2.5600

Conversions

Conversions Part 2

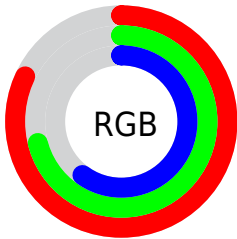
Format	Color
RYB	210, 208, 153
Decimal	13809049
CIELab	75.48, 6.20, 18.13
CIELCh	75, 19.155, 71.129
Yxy	49.0493, 0.3621, 0.3635
Android (android.graphics.Color)	4291999129 (0xFFD2B599)
YUV	186.4790, -16.5051, 20.6279
Hunter-Lab	70.0352, 1.9483, 17.6763

Details

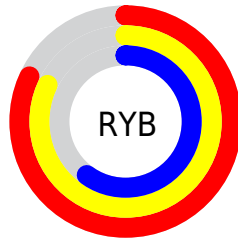
The Hex color **D2B599** is a light color, and the websafe version is hex **CCCC99**. A complement of this color would be **99B6D2**, and the grayscale version is **BBBBBB**.

A 20% lighter version of the original color is **FFEDCF**, and **9B8066** is the 20% darker color. If you saturate the color by 10%, you get **D2AA84**, and if you desaturate by 10%, it is **D2C0AE**.

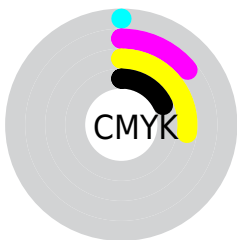
Distribution



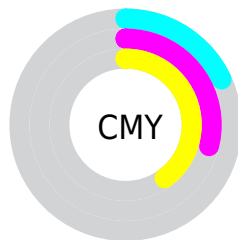
- Red (82%)
- Green (71%)
- Blue (60%)



- Red (82%)
- Yellow (82%)
- Blue (60%)



- Cyan (0%)
- Magenta (14%)
- Yellow (27%)
- Black (18%)



- Cyan (18%)
- Magenta (29%)
- Yellow (40%)

Brightness & Saturation Gradients

These gradients show how the Hex color D2B599 changes by changing the brightness by 10 percent. The first figure shows a shift by +10% for each color and the second figure -10%.

Similar to the brightness gradients but the following saturation gradients show a change of the Hex color D2B599 by changing the saturation by 10% instead.

 D2B599

 D2B599

FFFFFF

 B69A7F

 FFEDCF

 9B8066

 FFFFEC

 80674E

 664F37

 4E3821

 36230B

 200E00

 000000

 D2B599

 D2B599

 D2AA84

 D2C0AE

 D2A06F

 D2CAC3

 D2955A

 D2D5D8

 D28A45

 D2E0ED

 D28030

 D2EAFF

 D2751B

 D2F5FF

 D26A06

 D2FFFF

 D26700

Harmonies

Analogous

The Analogous color harmony consists of three colors that are next to each other on the color wheel.



DDB0A3



D2B599



C1BB97

Triad

The Triadic color harmony groups three colors that are evenly spaced from another and form a triangle on the color wheel.



D2B599



8DC4C0



C5B3D5

Complementary

The Complementary color scheme is a pair of colors which are on the opposite of each other on the color wheel.



D2B599



99B6D2

Split Complementary

Split-complementary colors differ from the complementary color scheme. The scheme consists of three colors, the original color and two neighbors of the complement color.



AFB9DC



D2B599



8CC3D0

Square

The Square scheme is like the rectangle color scheme, but the four colors are evenly spaced on the color wheel.



D2B599



9AC3AE



99BFDB



D6AFC6

Rectangle

The Rectangle color scheme consists of four colors that form a rectangle on the color wheel.



D2B599



B4BE9C



99BFDB



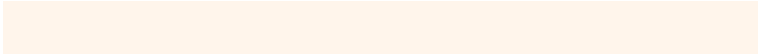
BEB5D8

Sweetspot

The Sweet Spot groups the original color and five complimentary colors.



D2B599



FFF5EB



D299B6



807973



000000



808080

Same Dimension

The Same Dimension uses a secret algorithm to generate beautiful new colors.



D2B599



FFD4AB



D2D199



69635E



A85300



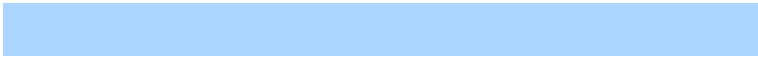
291400

Inverse Universe

The Inverse Universe completely reimagines the original color for something new.



99B6D2



ABD6FF



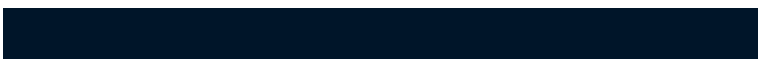
999AD2



5E6369



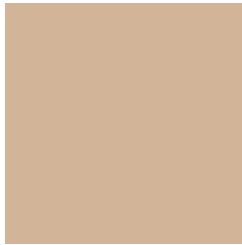
0056A8



001529

Previews

White Background



This preview shows how the Hex color D2B599 looks on a white background.

Color Contrast Check

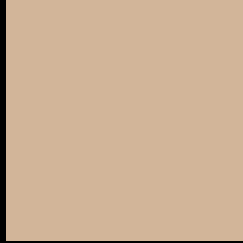
Large Text (above 18pt) WCAG AA × Fail

Any Text WCAG AA × Fail

Large Text (above 18pt) WCAG AAA × Fail

Any Text WCAG AAA × Fail

Black Background



This preview shows how the Hex color D2B599 looks on a black background.

Color Contrast Check

Large Text (above 18pt) WCAG AA ✓ Pass

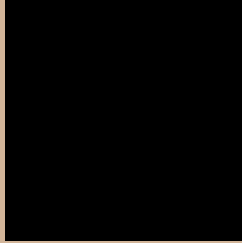
Any Text WCAG AA ✓ Pass

Large Text (above 18pt) WCAG AAA ✓ Pass

Any Text WCAG AAA ✓ Pass

If you want to check with other color combinations, try the [Color Contrast Checker](#).

Hex D2B599 Background



This preview shows how black text looks on a background with the Hex color D2B599.

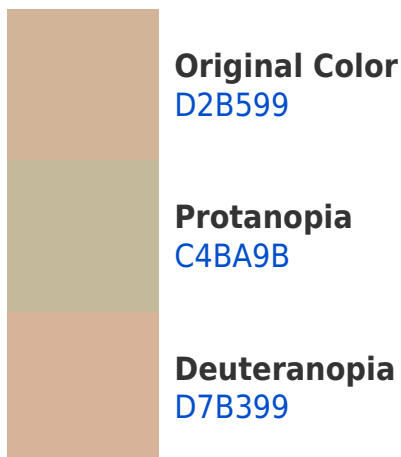


This preview shows how white text looks on a background with the Hex color D2B599.

Color Blindness Simulation

Color vision deficiency is a very complex topic, and I could not describe the different causes any better than Wikipedia does, so if you want to learn more, you should check out their [article about color blindness](#).

Dichromacy





Tritanopia
D6B0BE

Trichromacy



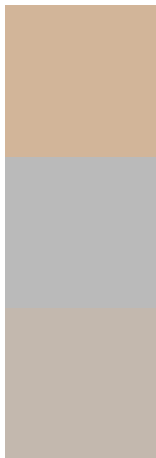
Original Color
D2B599

Protanomaly
C9B89A

Deuteranomaly
D5B499

Tritanomaly
D5B2B1

Monochromacy



Original Color
D2B599

Achromatopsia
BABABA

Achromatomaly
C3B8AE

CSS Examples

Text

The CSS property to change the color of the text to Hex D2B599 is called "color". The color property can be set on classes, ids or directly on the HTML element.

This example shows how text in the color #D2B599 looks like.

```
.text, #text, p{  
    color:#D2B599  
}
```

If you want to add a text shadow in that color use the text-shadow property, you can generate a text shadow directly with our [CSS Text Shadow Generator](#).

Here you see how black text with a 4 pixel #D2B599 colored shadow looks like.

```
.shadow{ text-shadow: 4px 4px 2px #D2B599
}
```

Border

The CSS property to change the border of an element to Hex D2B599 is called "border". The border property can be set on classes, ids or directly on the HTML element.

This example shows the color as border, it can be applied via the CSS property "border" or "border-color".

```
.border, #border, table{ border:4px solid
#D2B599 }
```

If only the border color should be changed use the property `border-color`.

```
.border{ border-color:#D2B599 }
```

If you want to add a box shadow in that color use:

Here you see how a box with a 4 pixel #D2B599 colored shadow looks like.

```
.boxshadow{ -moz-box-shadow:4px 4px 4px  
4px #D2B599; -webkit-box-shadow:4px 4px  
4px 4px #D2B599; box-shadow:4px 4px 4px  
4px #D2B599 }
```

Background

The CSS property to change the background color of an element to Hex D2B599 is called "background". The background property can be set on classes, ids or directly on the HTML element.

```
.background, #background, body{  
background:#D2B599 }
```

If only the background color should be changed can be used:

```
.background{ background-color:#D2B599 }
```

This example shows the color as background, it is applied via the CSS property "background".

To optimize and compress your CSS code, you can use our [online CSS compressor and optimizer](#) based on csstidy. If you want to create a linear or radial gradient as background or border, check our [CSS Gradient Generator](#).

Hey! You found this booklet interesting? Support Converting Colors with the new Membership Option!

The pro membership hides all ads, plus gives you double the colors in the color bucket, and more awesome pro features!

[Learn more, Memberships starting at \\$2.50/m!](#)

**Follow me
on Twitter!**

@ConvertingColor